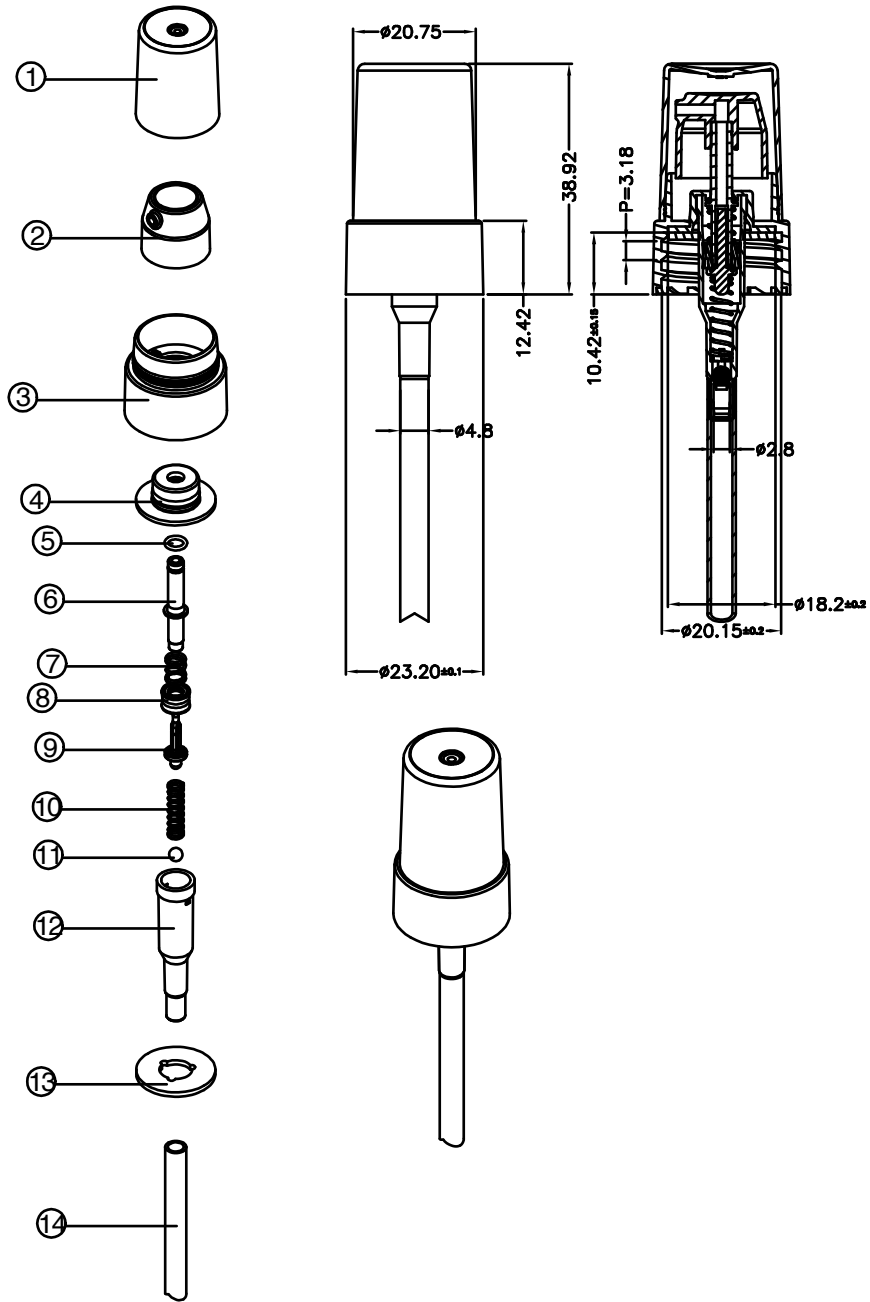


REVISION RECORD		
REV	DESCRIPTION	DESIGN



Output : 0.18 ± 0.02cc.

14	Dip tube	TR301/029	1	LDPE		
13	Gasket	TR301/022	1	PE	0.089g	
12	pump housing	TR301/102	1	PP 5090T+4 PR 3978 +0.16	0.45g	
11	Ball valve	TR301/048	1	SUS316	0.11g	
10	Spring	TR301/017	1	SUS304	0.18g	
9	Spring base	TR301/004	1	POM/FM090	0.071g	
8	Piston	TR301/002	1	LLDPE 3224+1 (5002) +0.16	0.08g	
7	Spring	TR301/018	1	SUS304	0.1g	
6	Piston bar	TR301/106	1	POM/FM090	0.23g	
5	O ring	TR301/027	1	NBR	0.01g	
4	Connection cap	TR301/065	1	PP/HKR102	0.31g	
3	Closure	TR301/268	1	PP/HKR102		
2	Actuator	TR301/261	1	PP/RE420MO	0.76g	
1	Transparent cover	TR300/017	1	PP/RE420MO	1.4g	
NO	NAME	DRAWING NO	QT'Y	MATERIAL	WEIGHT	REMARKS

MM (INCH)	Medium	Design:	
MM	STYLE	Examine:	
1-4	± 0.10	Approval:	
4-16	± 0.20	Material:	20/400
16-63	± 0.30	Weight:	DRAWING NO. TPS20D71W-M
63-250	± 0.50	Qt'y:	PART NO.
250-1000	± 0.80		SCALE: A4
			REV: A0
			SIZE: A4
			SHEET: 1/1

Change in drawing is determined by our company without further notice.

8 | 7 | 6 | 5 | 4 | 3 | 2 | 1