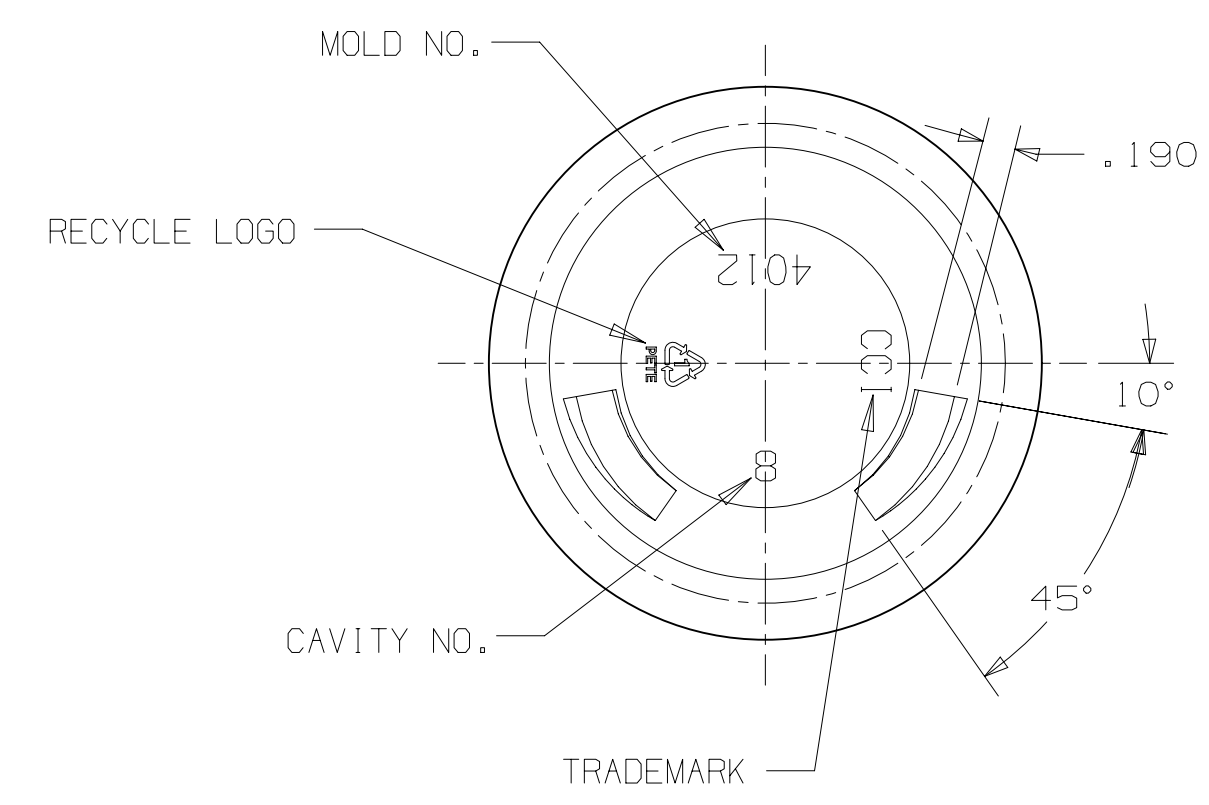
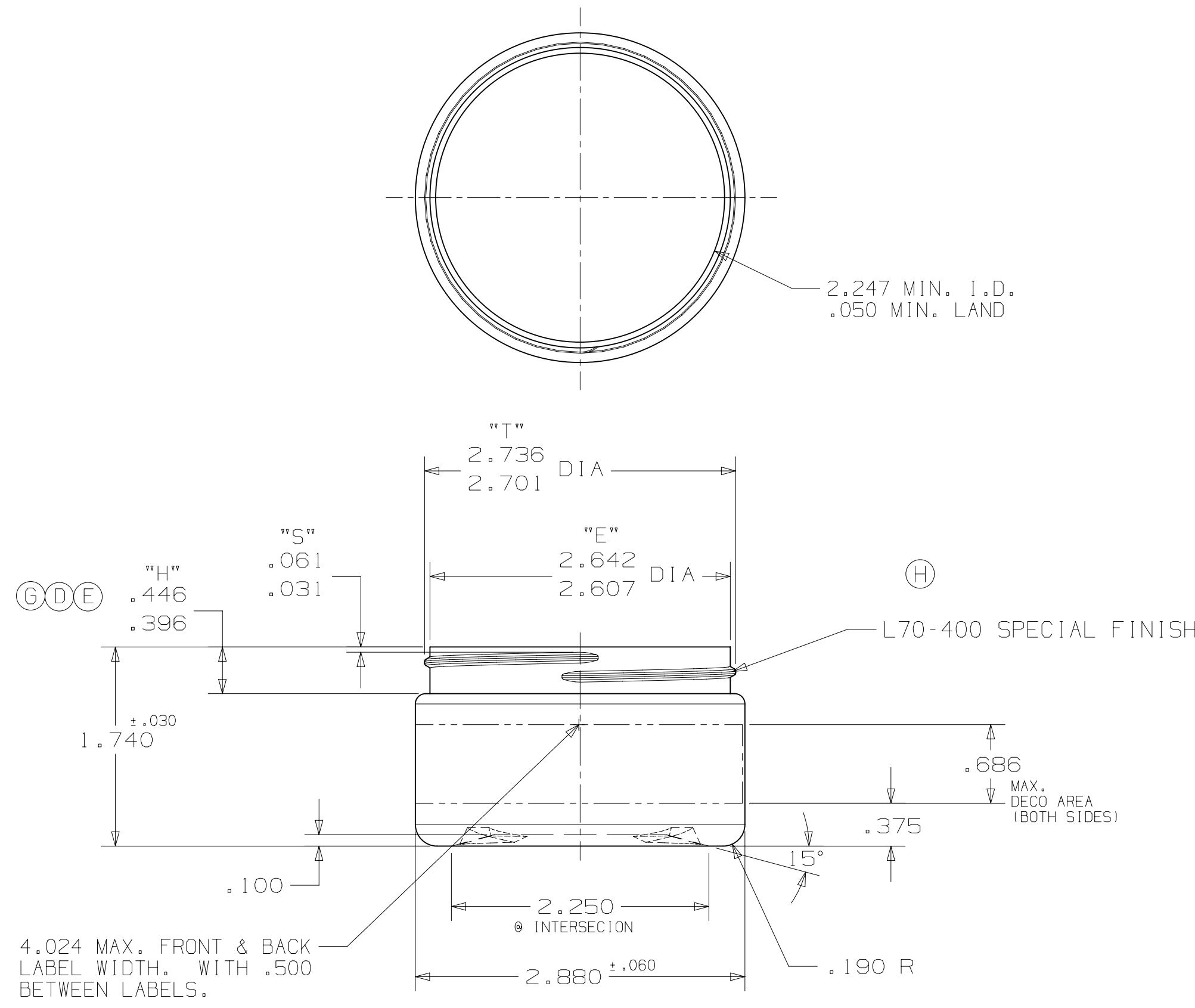


REVISIONS			
LTR	DESCRIPTION	DATE	BY
C	ADDED ODE OOM-45259 & TOOL NO; CUSTOMER WAS CLEARPLASS	27OCT03	KENT
D	"H" WAS .423/.393	18FEB04	KENT
E	"H" WAS .433/.383; WGT WAS 23.5 ± 1.5	10MAY05	KENT
F	WGT WAS 23.2; ADDED CODE OOM-45271	06JAN06	KENT
G	"H" WAS .433/.393	25APR06	HBW
H	ADDED FINISH CALL-OUT; REVISED CODE CHART	28NOV11	KENT
J	ADDED LABEL DWG# & 3 CODES	01FEB16	KENT
K	ADDED LABEL CHART & P-02417-06	17JUL17	MKR




NOTES :

1) OVERFLOW CAPACITY : 5.30 ± .17 FL.OZ.  
(156.7 ± 5.0 CC'S.)

2) WEIGHT : 23.4 ± 1.0 GRAMS  
(E)(F)

(C)(F)(H)(J)(K)

CODE CHART		LABEL CHART	
1	OOM 45073	1	PB0066-G
2	OOM 45271	2	P-02417-06
3	ZOM 45489		
4	ZOM 45549		
5	ZOM 45566		
6	WOM 45575		

DRAWN BY CM	MATERIAL PET	CUSTOMER SILGAN PLASTICS
DATE 10MAR00	QUOTE NO.	DESCRIPTION 4 FL. OZ. ROUND HEAVY WALL JAR
INFO. D-00-4935	REF. DWG. NO. PB0066-G	 TECHNICAL CENTER 1858 MECA WAY NORCROSS, GA 30093
INJ. TOOLING NO. 4001	BLOW TOOLING NO. 4012	
CAD UG	CODE NO. SEE CHART	DRAWING NO. D-00-4935-K
SCALE FULL	SURF. AREA 28.0 IN2	

DIMENSIONS SHOWN ARE:

AS MOLDED  AFTER TREAT

AFTER TREAT & DECO

THIS DRAWING HAS BEEN PREPARED BY SILGAN PLASTICS FOR OUR OWN PRODUCTION OF THE ARTICLE SHOWN AND MAY NOT BE COPIED OR UTILIZED BY OTHERS WITHOUT OUR PRIOR WRITTEN CONSENT.