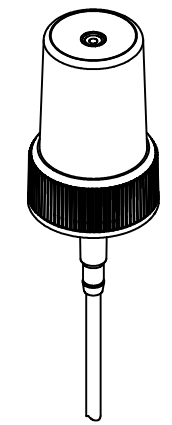
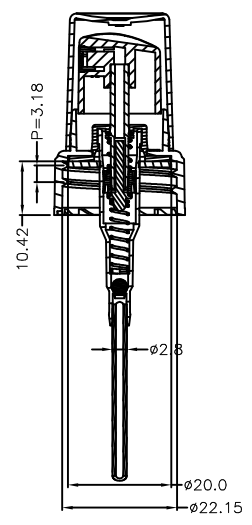
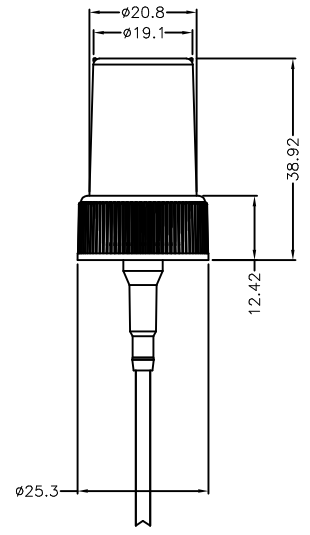
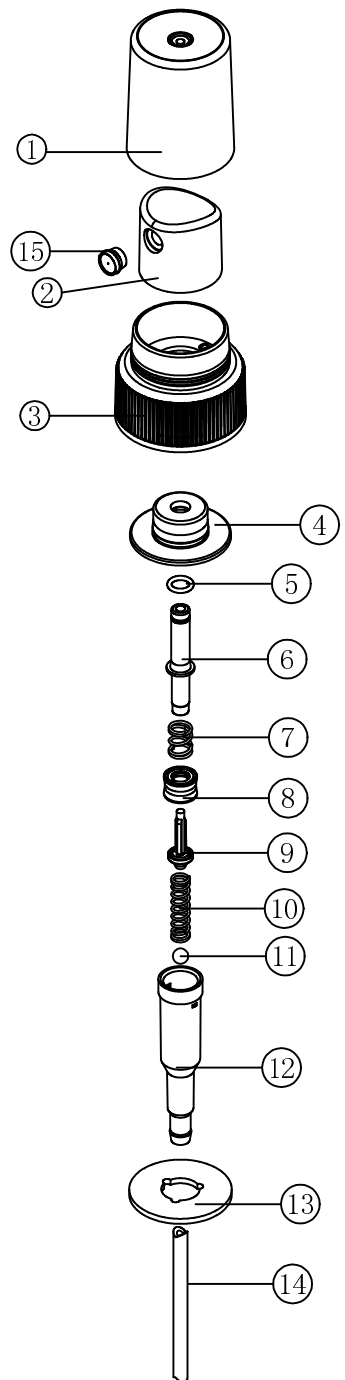


Change in drawing is determined by our company without the futher notice.

REVISION RECORD		
REV	DESCRIPTION	DESIGN



output:  $0.18 \pm 0.02$ CC

NO	NAME	DRAWING NO	QT' Y	MATERIAL	WEIGHT	REMARKS
15	Nozzle	TR301/223	1	POM/90-44	0.05g	
14	Dip tube	TR301/025	1	LDPE		
13	Gasket	TR301/023	1	PE	0.11g	
12	Pump housing	TR301/102	1	PP/RE420M0	0.45g	
11	Ball valve	TR301/019	1	Glass	0.04g	
10	Spring	TR301/017	1	SUS304	0.18g	
9	Spring base	TR301/004	1	POM/90-44	0.071g	
8	Piston	TR301/002	1	LLDPE/218W	0.064g	
7	Spring	TR301/018	1	SUS304	0.1g	
6	Piston bar	TR301/106	1	POM/90-44	0.23g	
5	O Ring	TR301/027	1	NER	0.01g	
4	Connection cap	TR301/010	1	PP/HKR102	0.3g	
3	Closure	TR301/262	1	PP/HKR102	1.8g	
2	Actuator	TR301/128	1	PP/RE420M0	0.96g	
1	Transparent cover	TR300/017	1	PP/RE420M0	1.4g	

MM (INCH)			Design: 2017.10.18		22/400	SCALE: A0
GRADE	FINE	MEDIUM	COARSE	Examine:		
1-4	$\pm 0.05$	$\pm 0.10$	$\pm 0.30$	Approval:	PART NO.	SIZE: A4
4-16	$\pm 0.07$	$\pm 0.20$	$\pm 0.50$	Material:		SHEET: 1/1
16-63	$\pm 0.10$	$\pm 0.30$	$\pm 0.70$	Weight:		
63-250	$\pm 0.20$	$\pm 0.50$	$\pm 1.20$	Qt' y:		
250-1000	$\pm 0.30$	$\pm 0.80$	$\pm 2.00$			

8 | 7 | 6 | 5 | 4 | 3 | 2 | 1