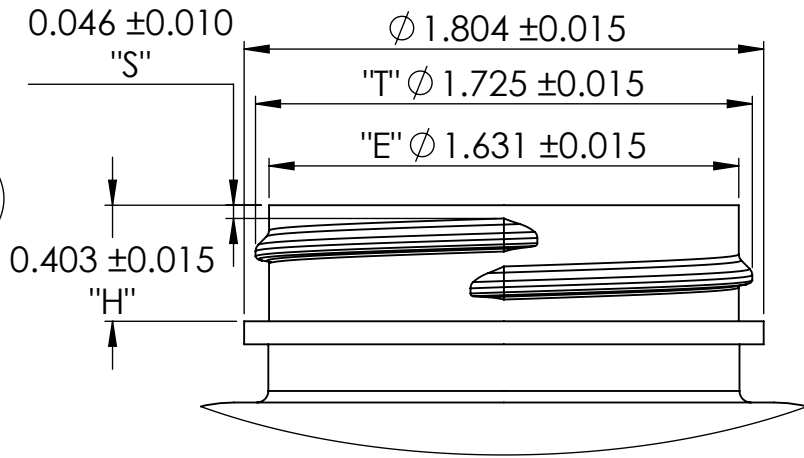
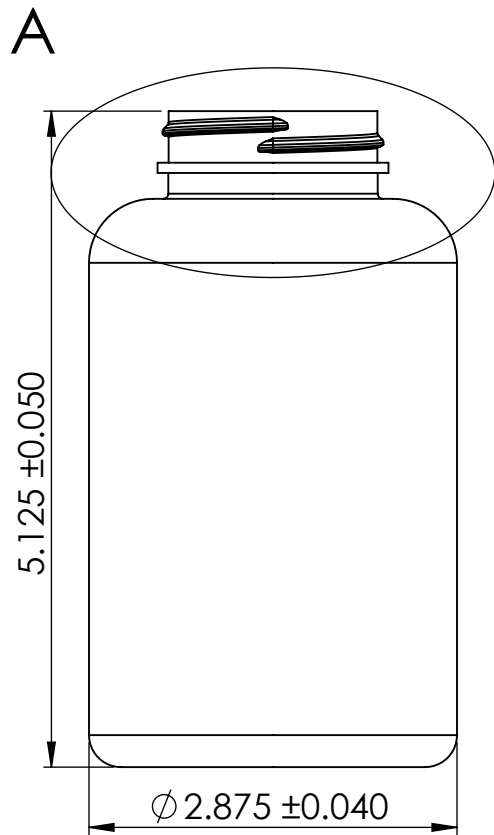
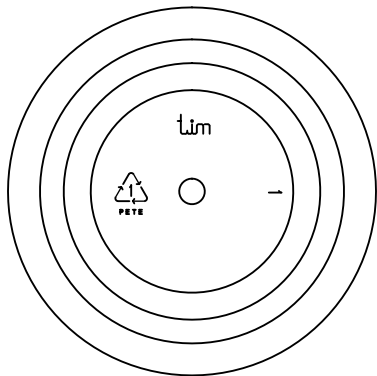
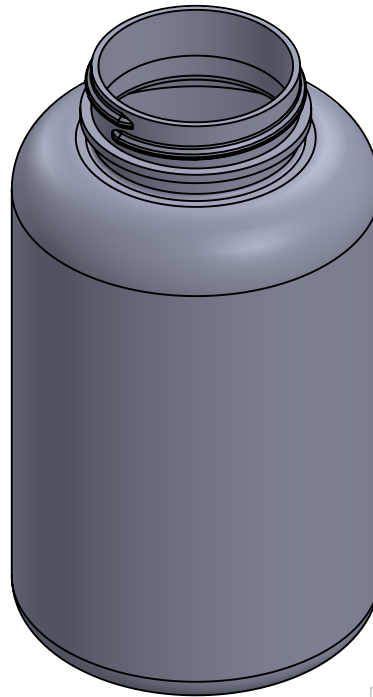


2

1



DETAIL A  
SCALE 1.5 : 1



PROPRIETARY AND CONFIDENTIAL

Rev.	Description	By	Date	ECR
A	Original	AS	4/17/2009	N/A
B	Format	SM	5/18/2018	N/A

**Notes/Comments:**

1. Dimensions are nominal (millimeters/inches).
2. This drawing represents the bottle 72 hours after time of manufacture. (Storage at nominal conditions)
3. The dimensional tolerances applied to the Overall Height of the container are to be applied to all height dimensions.
4. The dimensional tolerances applied to the major diameter or width of the container are to be applied to all diameter, width and thickness dimensions.
5. The actual weight will vary based on the actual production weight of the preforms
6. Fill levels are based on room temperature water
7. Tim Plastics, Inc. assumes no responsibility for fit, function or form of closures, accessories and/or shelf life and compatability of intended contents with this bottle.
8. The customer is responsible to determine the suitability of the intended use of this product and to keep it in a suitable environment (cool and dry) during transportation, storage and handling.

**CONFIDENTIAL**

Volume & Weight Information

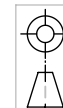
**Capacity Specification**

Fill Line Capacity (Approximate):	400 ml	Overflow Capacity:	450.0 ± 5.0 ml	Process/Preform:	ISBM
Material:	PETE	Container Target Weight:	41.5 ± 2.0 gm	Neck Finish:	45SP400

**Drawing Information**

Date:	5/18/2018	Drawn By:	SM
Scale:	SCALE: 2:3	Checked By:	AS

**400cc Round Bottle**



Drawing Type:	Product Drawing
Drawing Number:	A 3001401
Rev.	B

2

1

## 400 cc 45/400 WMR PET



PRODUCT:

PCS/CASE: **180, 20 cases/pallet**

ID: **T400WMR045400CL1**

GROSS WEIGHT/ PALLET: **500 lbs**

DRAWING: **3001401**

PALLET: **48"x40" 4 way kiln dry**

HEIGHT: **5.1 inches**

UNITIZE/PALLETIZE: **Stretch wrap on 48"x40" 4 way  
pallet with 0.7 MIL Stretch Film**

Diameter: **2.9 inches**

**HEIGHT WITH PALLET NOT TO EXCEED 100 inches**

Overflow: **457 cc**

MATERIAL: **PET, Clear, Nanya Tairilin Chip AA20 or  
alternate**

Maximum Regrind **0.00%, Virgin Only**