



FPT300F

Homopolymer Polypropylene

- Good Mold Release, Excellent Part Finish (Low Bloom)
- Suggested Uses Include Housewares, Caps and Closures, Mugs / Cups, Thin-Walled Containers

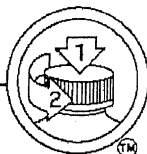
Property	Units	Typical Value	Test Method
Nominal Melt Flow Rate (230°C/2.16kg)	g/10 min	30	ASTM D1238
Tensile Strength at Yield (2 in/min, 50 mm/min)	psi MPa	4,800 33	ASTM D638
Elongation at Yield (2 in/min, 50 mm/min)	%	10	ASTM D638
Flexural Modulus (0.05 in/min, 1.3 mm/min, 1% secant)	psi MPa	200,000 1,379	ASTM D790A
Notched Izod Impact Strength at 23°C	ft-lbs/in J/m	0.7 37	ASTM D256A
Rockwell Hardness	R	104	ASTM D785

Information contained herein is considered accurate to our best knowledge. It is offered for your consideration and investigation, and is not to be construed as a representation or warranty, expressed or implied, for which Braskem assumes legal responsibility. Our warranties are limited to those expressly stated in formal contracts or in conditions of sale on our invoices and order acceptances. Conditions and methods of use vary and are beyond the control of Braskem. Braskem, therefore, disclaims any liability incurred as a result of the use of its products in accordance with the data contained herein. No information herein shall be construed as an offer of indemnity for infringement or as a recommendation to use these products in such a manner as to infringe any patent, domestic or foreign.

For cautions and other information relating to handling of
and exposure to this product, please see material safety
data sheet code number C4001 published by Braskem.

550 Technology Drive
Pittsburgh, PA 15219
1-800-223-8871

Revision Date: Monday,
March 23, 2009
www.braskem.com



MOLD-RITE PLASTICS, LLC

1 PLANT STREET, P.O. BOX 160
 PLATTSBURGH, NY 12901
 (518) 561-1812
<http://moldriteplastics.com>

Product Data Sheet

CP0001 Grade

Polypropylene, Impact Copolymer

Product Description

CP0001 is a high flow, high impact polypropylene copolymer grade resin designed for molding applications requiring good balance stiffness, impact resistance and process ability. This grade specification designated by Mold-Rite Plastics covers all copolymer resins that meet the typical value data listed below.

Regulatory Compliance

FDA-21 CFR 177.1520(c) 3.1 for Food & Drug Contact
 RoHS Compliant
 CONEG/Heavy Metal Compliant
 Proposition 65 Compliant
 EU Directive 2002/72/EC Compliant

Typical Properties	Method	Typical Value	Unit
--------------------	--------	---------------	------

Physical

Density – Specific Gravity	ASTM D 792	.900 - .905	sp gr. 23/23° C
Melt Flow Rate	ASTM D 1238	35.0	g/10 min

Mechanical

Tensile Strength @ Yield (2 in/min) (50 mm/min)	ASTM D 638	3,100 – 4,000 21.4 – 27	PSI MPa
Flexural Modulus (0.05 in/min, 1% Secant, Procedure A) (1 mm/min, 1% Secant, Procedure A)	ASTM D 790	160,000 – 210,000 1,103 – 1,450	PSI MPa

Impact

Notched Izod impact (23 °C, Method A)	ASTM D 256	1.4 – 2.4 75 – 128	Ft-lb/in J/m
--	------------	-----------------------	-----------------

Thermal

Heat Deflection (Softening Point) Unannealed DTLU @ 66psi	ASTM D 648	212 – 225 88 – 107	°F °C
Processing Range	-----	400 – 500	°F

For further regulatory information contact Mold-Rite Plastics customer service or sales department.

Notes: These are typical properties not to be construed as specifications. Mold-Rite Plastics reserves that right to include any other resin grade that meets that above data values and regulatory requirements.

This product data sheet covers multiple resin formulations and include any other resin grade that meets the above typical data values and regulatory requirements. All listed grades have similar physical, chemical and processing properties. Listed known grades; 44FY01; SG802N; AP5135H; 4820WZ; 6535A; 2535A

All results were obtained from manufacturer product data sheets (where applicable). The data are intended as a general guide only and do not necessarily represent results that may be obtained elsewhere. The use of Mold-Rite Plastics products must be guided by the users own methods for selection of proper formulation. Mold-Rite Plastics disclaims any responsibility for misuse or miss application of its products. Mold-Rite Plastics liability and customer's exclusive remedy for any claims arising out of sales of its products are expressly limited at customer option for replacement not to exceed the purchase price plus transportation charges thereon in respect to any material which damage is claimed.



MOLD-RITE PLASTICS LLC.
 1 Plant Street P.O. Box 160
 Plattsburgh NY 12901
 (518)561-1812
<https://www.mrpcap.com>

Product Data Sheet

MRPWH01 White

Product Description

This specification designated by Mold-Rite Plastics covers all colorants that meet the typical value data listed below.

Regulatory Compliance

FDA – Title 21 CFR Section 170-199 for Food & Drug Contact
 RoHS Compliant
 CONEG/Heavy Metal Compliant
 Proposition 65 Compliant

Typical Properties	Typical Value
Density	.90
Melt Index	30
Pellets	Standard
Recommended Let Down Ratio	50:1
Carrier Resin	PP
Estimated Heat Stability	450-500 °F
Visual Evaluation	Excellent
Additives	None
DE Tolerance	< 2.00

For further regulatory information, contact Mold-Rite Plastics customer service or sales department.

Notes: These are typical properties not to be construed as specifications. Mold-Rite Plastics reserves that right to include any other colorant that meets that above data values and regulatory requirements.

This product data sheet covers multiple colorant formulations that meet the above typical data values and regulatory requirements. All listed formulas have similar physical, chemical and processing properties. Listed known formulas; Polymer Concentrates – 10536, Penn Color 60W5221

All results were obtained from manufacturer product data sheets (where applicable). The data are intended as a general guide only and do not necessarily represent results that may be obtained elsewhere. The use of Mold-Rite Plastics products must be guided by the users own methods for selection of proper formulation. Mold-Rite Plastics disclaims any responsibility for misuse or miss application of its products. Mold-Rite Plastics liability and customer's exclusive remedy for any claims arising out of sales of its products are expressly limited at customer option for replacement not to exceed the purchase price plus transportation charges thereon in respect to any material which damage is claimed.



PRODUCT DATA SHEET

HS 035 HEAT SEAL/20F

MRP Description - (021)HS035.020 R SFYP

PRODUCT DESCRIPTION

Description: A paper-backed aluminum foil coated with a clear heat sealable coating blend of high molecular weight ethylene and vinyl acetate copolymers laminated to polystyrene foam.

FDA Status: Complies with Federal Regulations of H.E.W., FDA, sections 175.105, 175.300, 176.170, 176.180, 177.1350, 178.3710, and 182.1. It is entered in SANCAP Liner's food master file FMF 166 and drug master file DMF 2518.

RECOMMENDED STORAGE CONDITIONS

The material should be stored in well-ventilated area (temp. 60° - 80°F; RH - 40% - 60%). Material and lined closures are heat sensitive. Storage or shipping temperatures should not be in excess of 105°F. Curling, blocking, splitting, or foil separation may result. If material becomes chilled, it should be stored under the recommended conditions until stabilized. Avoid storing closure liner materials over 60 days. Metal foil is prone to corrosion.

PHYSICAL AND CHEMICAL PROPERTIES

1. Color Aluminum
2. Thickness, mils

a) Overall	22.41 - 28.33
b) Heat Seal Coating	1.50 - 3.00
c) Aluminum Foil	0.31 - 0.38
d) Paper	2.60 - 3.00
e) Foam	18.00 - 22.00
3. Basis Wt. Lbs./Ream 3000 ft.²

a) Overall	134.3 - 176.9
b) Heat Seal Coating	20.7 - 41.9
c) Aluminum Foil	13.3 - 16.2
d) Paper	33.3 - 36.8
e) Foam	67.0 - 82.0
4. Heat Seal Coating

a) Melting Point °F	150 - 160
b) Blocking Point °F	130 - 135
5. Gas Transmission: cc/cin²/24hrs/1atm

a) Oxygen	nil
-----------	-----
6. Water Vapor Transmission

a) gm/cin ² /24hrs/100°F/90%RH	Near zero
---	-----------

SUGGESTED PRODUCT USES

Material is an induction heat sealable tamper-indicating innerseal which can be used for over-the-counter drug products on Polyethylene, Glass*, PET, PVC, Polystyrene, and Polypropylene.

Dry Products Milk Peroxide	Fruit Juices Glass Cleaner Spices
---	--

Product applications listed above are a partial listing and do not cover all suitable applications. These are recommendations for general categories and user must test for suitability for their specific product. Not suitable for products containing oil.

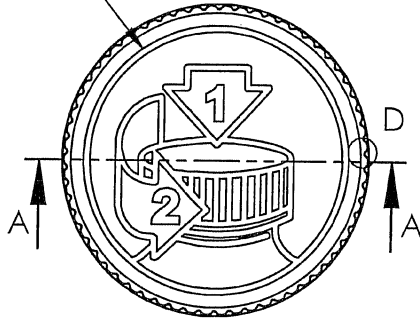
**Glass must be treated for proper adhesion.*

The technical information and suggestions for use made herein are based on SANCAP Liner research and experience and are believed to be reliable, but such information and suggestions do not constitute a warranty, and no patent liability can be assumed. Since SANCAP Liner has no control over the conditions under which the product is transported, stored, handled, used, or applied, buyer must determine for themselves, by preliminary tests or otherwise, the suitability of the product for their purposes. All products are sold subject to SANCAP Liner's written warranty, which is in lieu of all other warranties or merchantability and fitness for a particular purpose. SANCAP Liner's liability on any basis is limited to the price of the product used.

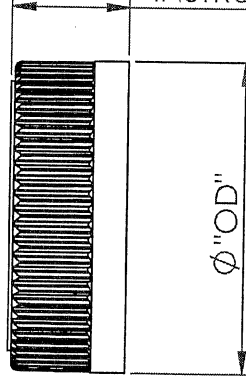
PRODUCT NAME: HS035 HEAT SEAL/20F
Rev. 042111

16125 Armour St. N.E. Alliance, Ohio 44601 330-821-1166 Fax: 330-821-0364 Toll Free: 800-966-7262
www.sancapliner.com

INSTRUCTIONS
RAISED .020"



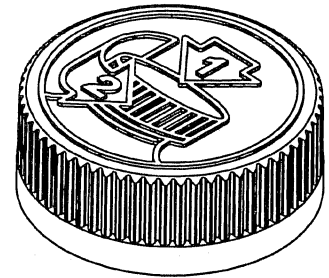
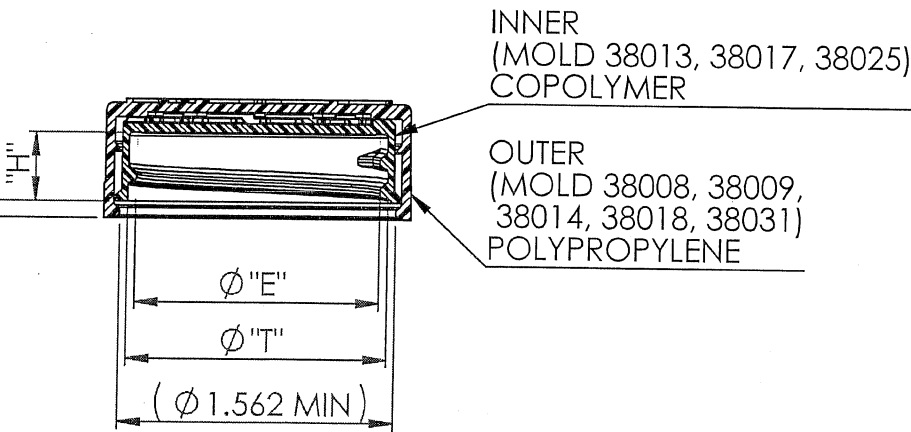
"OAH" OVER
INSTRUCTIONS



DETAIL D
SCALE 5 : 1

(62) EQUISPACED
RIBS

0.076 [1.93] MIN
0.141 [3.58] MAX



SECTION A-A

.167 PITCH - 6 THREADS PER INCH
380° FULL DEPTH THREAD

	TOLERANCE	UNITS	
T	±0.010 [0.25]	in [mm]	1.488 [37.80]
E	±0.010 [0.25]	in [mm]	1.396 [35.46]
H	±0.008 [0.20]	in [mm]	0.388 [9.86]
OD	±0.013 [0.33]	in [mm]	1.760 [44.70]
OAH	±0.011 [0.28]	in [mm]	0.671 [17.04]
PART WEIGHT (ASSEMBLY)	±0.7	g	7.1

THIS DRAWING SUPERSEDES C-8019

STATIC TORQUE RECOMMENDATION

17-26 in-lbs

THIS REQUIREMENT MAY VARY
DEPENDENT UPON BOTTLE MATERIAL,
NECK FINISH, AND CAPPING EQUIPMENT

DRAWING TYPE : CUSTOMER

DIMENSIONS ENCLOSED IN () INDICATE REFERENCE
DIMENSIONS AND NO TOLERANCE LIMITS ARE ESTABLISHED

TOLERANCES UNLESS OTHERWISE SPECIFIED

DIMENSION (inches)	TOLERANCE	DIMENSION (mm)	TOLERANCE
0-0.787	±0.006	0-20	±0.152
0.788-1.181	±0.008	21-30	±0.203
1.182-2.756	±0.012	31-70	±0.305
2.757-3.937	±0.016	71-100	±0.406
3.938-5.096	±0.020	101-150	±0.508
5.097-7.874	±0.024	151-200	±0.610
7.875-9.843	±0.032	201-250	±0.813

ANGULAR TOLERANCE ± 2°

PROPRIETARY AND CONFIDENTIAL

THIS DRAWING IS PROTECTED BY COPYRIGHT AND CONTAINS INFORMATION
PROPRIETARY TO MOLD-RITE, WEATHERCHEM AND STULL TECHNOLOGIES.
ANY REPRODUCTION, DISCLOSURE, OR USE OF ITS CONTENTS OR ANY PART
THEREOF IS EXPRESSLY PROHIBITED EXCEPT AS MOLD-RITE, WEATHERCHEM
AND STULL TECHNOLOGIES OTHERWISE MAY AGREE IN WRITING

One Company - Unlimited Packaging Possibilities



EXPANDED PRODUCT OFFERINGS • MULTIPLE MANUFACTURING LOCATIONS
INDUSTRY LEADING INNOVATION • UNMATCHED CUSTOMER SERVICE

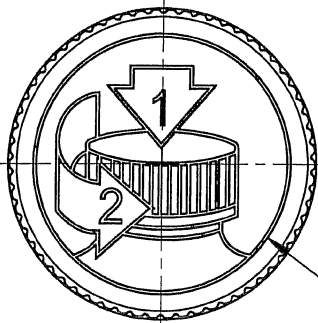
THIRD ANGLE PROJECTION SOLIDWORKS	DISTRIBUTION CODE D	DRAWING NAME 38mm CHILD RESISTANT CLOSURE ("PICTO" INSTRUCTIONS)
DRAWN BY: L BROZELL	04/14/14	DRAWING NUMBER CQA-10023
QA APPR:		MATERIAL SEE DRAWING
CUSTOMER APPR:		MODEL NUMBER: CQA-10023.ASM
		SCALE SHEET SIZE SHEET REV N/P 1:1 & NOTED 8 1/2 x 11 1 of 3 03 AC

THE CLOSURE DIMENSIONS
DEPICTED ARE THOSE WHICH HAVE
GENERALLY BEEN FOUND TO BE FUNCTIONAL
BASED ON INDUSTRY EXPERIENCE BECAUSE
OF VARIABILITY IN GLASS AND PLASTIC
CONTAINER FINISHES, EACH CLOSURE/FINISH
SYSTEM SHOULD BE INDIVIDUALLY EVALUATED
AND TESTED TO ENSURE IT MEETS APPLICABLE
PERFORMANCE CRITERIA. SEE QUALITY
ASSURANCE SPECIFICATIONS FOR ADDITIONAL
INFORMATION.

MOLD-RITE, WEATHERCHEM AND STULL
TECHNOLOGIES RESERVES THE RIGHT TO
REVISE ANY OR ALL SPECIFICATIONS AND
REQUIREMENTS.

REVISION HISTORY

REV	N/P	DATE	REVISION	DE
00	AA	04/15/14	INITIAL DRAWING CREATED	LMB
01	AA	08/29/14	UPDATED TOLERANCES FOR VALIDATION OF 38025 INNER MOLD	LMB
02	AA	06/18/15	UPDATED TOLERANCES FOR VALIDATION OF 38029 OUTER MOLD - DRAWING RELEASED	LMB
02	AB	06/23/15	ADDED ALTERNATE PICTO INSTRUCTIONS; WEIGHT WAS 7.0g	LMB
02	AC	09/01/15	ADDED MOLD 38031	LMB
03	AC	09/03/15	OD WAS 1.759	LMB



INSTRUCTIONS
EMBOSSD
0.020 [0.51]

ALTERNATE PICTO
INSTRUCTIONS

THE CLOSURE DIMENSIONS DEPICTED ARE THOSE WHICH HAVE GENERALLY BEEN FOUND TO BE FUNCTIONAL BASED ON INDUSTRY EXPERIENCE BECAUSE OF VARIABILITY IN GLASS AND PLASTIC CONTAINER FINISHES. EACH CLOSURE/FINISH SYSTEM SHOULD BE INDIVIDUALLY EVALUATED AND TESTED TO ENSURE IT MEETS APPLICABLE PERFORMANCE CRITERIA. SEE QUALITY ASSURANCE SPECIFICATIONS FOR ADDITIONAL INFORMATION.

MOLD-RITE, WEATHERCHEM AND STULL TECHNOLOGIES RESERVES THE RIGHT TO REVISE ANY OR ALL SPECIFICATIONS AND REQUIREMENTS.

DRAWING TYPE : CUSTOMER

DIMENSIONS ENCLOSED IN () INDICATE REFERENCE DIMENSIONS AND NO TOLERANCE LIMITS ARE ESTABLISHED

TOLERANCES UNLESS OTHERWISE SPECIFIED

DIMENSION (Inches)	TOLERANCE	DIMENSION (mm)	TOLERANCE
0-0.787	±0.008	0-20	±0.152
0.788-1.181	±0.008	21-30	±0.203
1.182-2.756	±0.012	31-70	±0.305
2.757-3.937	±0.016	71-100	±0.406
3.938-5.096	±0.020	101-150	±0.508
5.097-7.874	±0.024	151-200	±0.610
7.875-9.843	±0.032	201-250	±0.813

ANGULAR TOLERANCE ± 2°

PROPRIETARY AND CONFIDENTIAL

THIS DRAWING IS PROTECTED BY COPYRIGHT AND CONTAINS INFORMATION PROPRIETARY TO MOLD-RITE, WEATHERCHEM AND STULL TECHNOLOGIES. ANY REPRODUCTION, DISCLOSURE, OR USE OF ITS CONTENTS OR ANY PART THEREOF IS EXPRESSLY PROHIBITED EXCEPT AS MOLD-RITE, WEATHERCHEM AND STULL TECHNOLOGIES OTHERWISE MAY AGREE IN WRITING

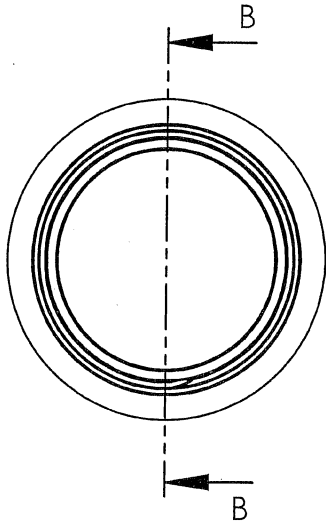
One Company - Unlimited Packaging Possibilities

weatherchem MRP STULL

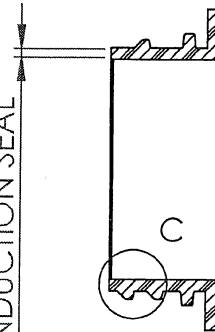
PROPRIETARY PRODUCT OFFERINGS. MULTIPLE MANUFACTURING LOCATIONS. INDUSTRY LEADING INNOVATION. UNMATCHED CUSTOMER SERVICE

THIRD ANGLE PROJECTION SOLIDWORKS	DISTRIBUTION CODE D	DRAWING NAME 38mm CHILD RESISTANT CLOSURE ("PICTO" INSTRUCTIONS)
DRAWN BY: REFER TO PAGE 1		DRAWING NUMBER CQA-10023
QA APPR: REFER TO PAGE 1		MATERIAL
CUSTOMER APPR: REFER TO PAGE 1		SCALE SHEET SIZE SHEET REV N/P 8½ x 11 2 of 3 03 AC

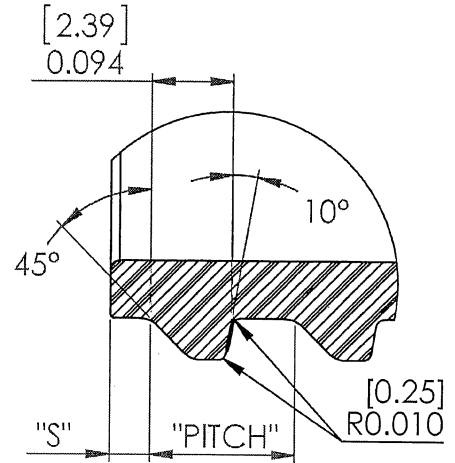
Recommended Neck Finish



[1.27]
0.050 MINIMUM FLAT
RECOMMENDED FOR
PROPER INDUCTION SEAL

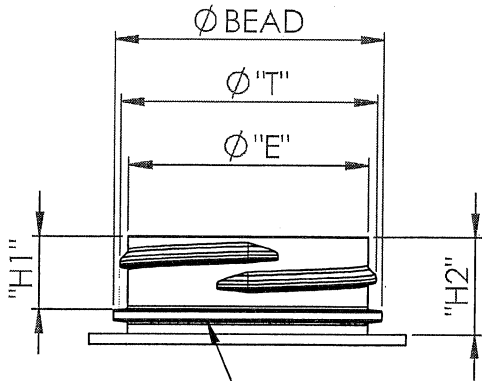


SECTION B-B



DETAIL C
SCALE 5 : 1

THREAD DETAIL



BEAD IS NOT REQUIRED
FOR CHILD RESISTANT
CLOSURE FUNCTION

	TOLERANCE	UNITS	
E	±0.012 [0.30]	in [mm]	1.370 [34.80]
T	±0.012 [0.30]	in [mm]	1.464 [37.19]
S	±0.015 [0.38]	in [mm]	0.046 [1.17]
H1	±0.015 [0.38]	in [mm]	0.413 [10.49] 0.398 [10.11] MINIMUM (WITH NO LINER)
H2	±0.015 [0.38]	in [mm]	0.550 [13.97] 0.535 [13.59] MINIMUM (WITH NO LINER)
Ø BEAD		in [mm]	1.545 [39.24] MAXIMUM
TPI		in	6
PITCH		in [mm]	0.167 [4.23]

THE CLOSURE DIMENSIONS DEPICTED ARE THOSE WHICH HAVE GENERALLY BEEN FOUND TO BE FUNCTIONAL BASED ON INDUSTRY EXPERIENCE BECAUSE OF VARIABILITY IN GLASS AND PLASTIC CONTAINER FINISHES, EACH CLOSURE/FINISH SYSTEM SHOULD BE INDIVIDUALLY EVALUATED AND TESTED TO ENSURE IT MEETS APPLICABLE PERFORMANCE CRITERIA. SEE QUALITY ASSURANCE SPECIFICATIONS FOR ADDITIONAL INFORMATION.

MOLD-RITE, WEATHERCHEM AND STILL TECHNOLOGIES RESERVES THE RIGHT TO REVISE ANY OR ALL SPECIFICATIONS AND REQUIREMENTS.

DRAWING TYPE :		CUSTOMER	
DIMENSIONS ENCLOSED IN () INDICATE REFERENCE DIMENSIONS AND NO TOLERANCE LIMITS ARE ESTABLISHED			
TOLERANCES UNLESS OTHERWISE SPECIFIED			
DIMENSION (inches)	TOLERANCE	DIMENSION (mm)	TOLERANCE
0-0.787	±0.006	0-20	±0.152
0.788-1.181	±0.008	21-30	±0.203
1.182-2.756	±0.012	31-70	±0.305
2.757-3.937	±0.016	71-100	±0.406
3.938-5.096	±0.020	101-150	±0.508
5.097-7.874	±0.024	151-200	±0.610
7.875-9.843	±0.032	201-250	±0.813
ANGULAR TOLERANCE ± 2°			
PROPRIETARY AND CONFIDENTIAL			

THIS DRAWING IS PROTECTED BY COPYRIGHT AND CONTAINS INFORMATION PROPRIETARY TO MOLD-RITE, WEATHERCHEM AND STILL TECHNOLOGIES. ANY REPRODUCTION, DISCLOSURE, OR USE OF ITS CONTENTS OR ANY PART THEREOF IS EXPRESSLY PROHIBITED EXCEPT AS MOLD-RITE, WEATHERCHEM AND STILL TECHNOLOGIES OTHERWISE MAY AGREE IN WRITING

One Company - Unlimited Packaging Possibilities

weatherchem MRP STILL

EQUIPMENT, PROXY, OFFPRINGS, MULTIPLE MANUFACTURING LOCATIONS, INDUSTRY LEADING INNOVATION, UNMATCHED CUSTOMER SERVICE

THIRD ANGLE PROJECTION SOLIDWORKS

DISTRIBUTION CODE D

DRAWING NAME: 38mm CHILD RESISTANT CLOSURE

DRAWING NUMBER: CQA-10023

DRAWN BY: REFER TO PAGE 1

QA APPR: REFER TO PAGE 1

CUSTOMER APPR: REFER TO PAGE 1

MATERIAL:

SCALE: 1:1 & NOTED SHEET SIZE: 8 1/2 x 11 SHEET: 3 of 3 REV: 03 N/P: AC