

Technical Data Sheet

Petrothene LR734046



High Density Polyethylene

Product Description

Petrothene LR734046 is a high density polyethylene resin that exhibits good stiffness and environmental stress crack resistance. This product contains stearate as a core rod release for the injection-blow molding process. Typical applications include bottles for household chemicals, food products, and personal care products.

Regulatory Status

For regulatory compliance information, see *Petrothene* LR734046 [Product Stewardship Bulletin \(PSB\)](#) and [Safety Data Sheet \(SDS\)](#).

Status	Commercial: Active
Availability	North America
Application	Bottles and Vials
Market	Rigid Packaging
Processing Method	Injection Blow Molding
Attribute	Excellent Processability

Typical Properties	Nominal Value	English Units	Nominal Value	SI Units	Test Method
Physical					
Melt Flow Rate, (190 °C/2.16 kg)	0.38	g/10 min	0.38	g/10 min	ASTM D1238
Density, (23 °C)	0.953	g/cm ³	0.953	g/cm ³	ASTM D1505
Mechanical					
Flexural Modulus, (1% Secant)	176000	psi	1210	MPa	ASTM D790
Tensile Strength at Yield	4000	psi	27.6	MPa	ASTM D638
Tensile Elongation at Break	>500	%	>500	%	ASTM D638
Environmental Stress Crack Resistance, F ₅₀ (100% Igepal®, Cond B)	25	hr	25	hr	ASTM D1693
Impact					
Tensile Impact Strength	131	ft-lb/in ²	275	kJ/m ²	ASTM D1822
Hardness					
Shore Hardness, (Shore D)	67		67		ASTM D2240
Thermal					
Vicat Softening Temperature	261	°F	127	°C	ASTM D1525
Low Temperature Brittleness, F ₅₀	<-105	°F	<-76	°C	ASTM D746
Deflection Temperature Under Load, (66 psi, Unannealed)	167	°F	75	°C	ASTM D648
Additive					
Stearate As core rod release agent	Medium		Medium		LYB Method

Notes

Igepal® is a registered trademark of Rhodia.

These are typical property values not to be construed as specification limits.

Processing Techniques

Specific recommendations for resin type and processing conditions can only be made when the end use, required properties and fabrication equipment are known.

Company Information

For further information regarding the LyondellBasell company, please visit <http://www.lyb.com/>.

© LyondellBasell Industries Holdings, B.V. 2018

Disclaimer

Information in this document is accurate to the best of our knowledge at the date of publication. The document is designed to provide users general information for safe handling, use, processing, storage, transportation, disposal and release and does not constitute any warranty or quality specification, either express or implied, including any warranty of merchantability or fitness for any particular purpose. Users shall determine whether the product is suitable for their use and can be used safely and legally.

In addition to any prohibitions of use specifically noted in this document, LyondellBasell may further prohibit or restrict the sale of its products into certain applications. For further information, please contact a LyondellBasell representative.

Trademarks

The Trademark referenced within the product name is owned or used by the LyondellBasell family of companies.



NC1175C White FDA

BASE RESIN: LDPE/LLDPE COMBINATION

MELT INDEX: 4 - 12gms/10mins.....ASTM-D-1238 (E)

DENSITY: .916 - .926gms/cm³.....ASTM D-1505

CONCENTRATE:

MELT INDEX: 4 - 8 gms/10mins.....ASTM D 1238 (E)

BULK DENSITY: 45 – 51 lbs/cu.ft.....ASTM D-1895-67 (B)

PERCENT LOADING: 54 % ± 2% (Formulated)

U.V. STABILIZER: None Added

MOISTURE ANALYSIS: .5% Maximum.....Elec. Moisture Analyzer

F.D.A STATUS: ACCEPTABLE FOR FOOD CONTACT APPLICATIONS

PELLET SPECIFICATION: 1/8 Strand or Underwater Cut Pellet

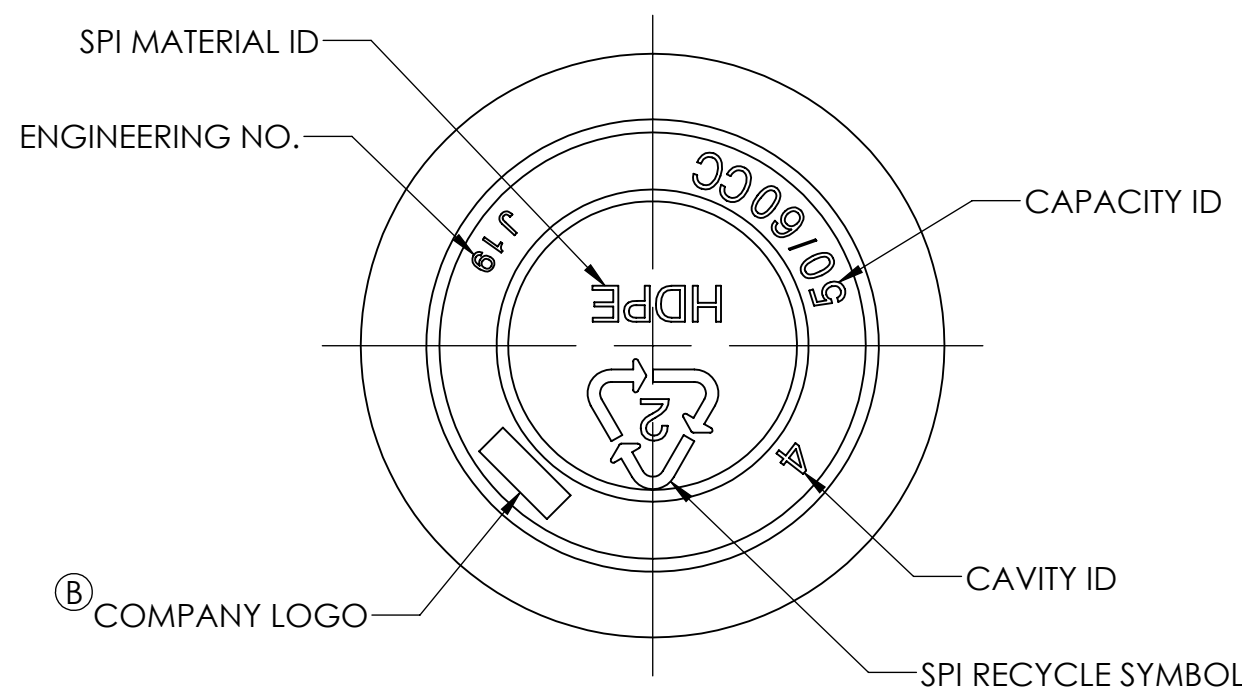
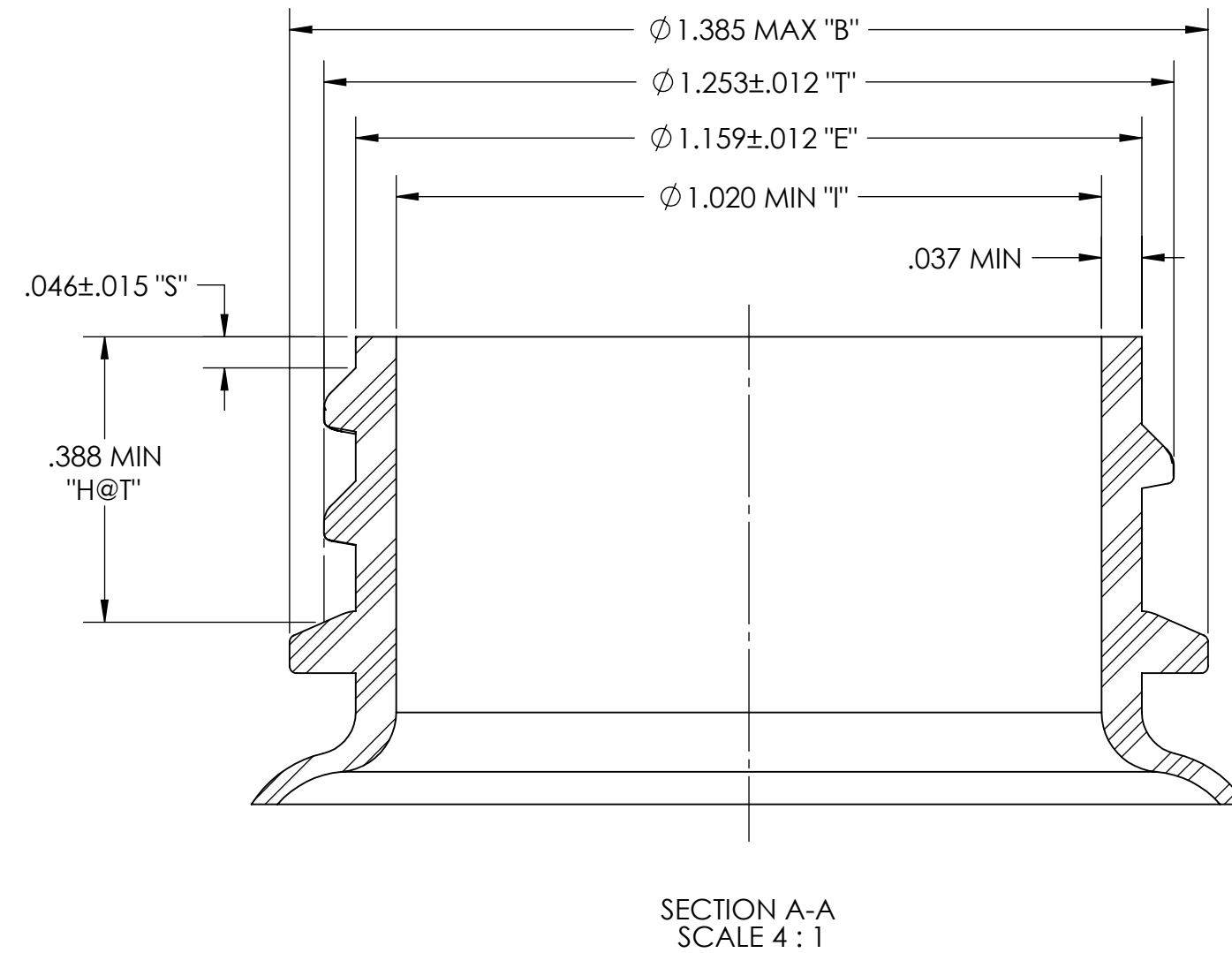
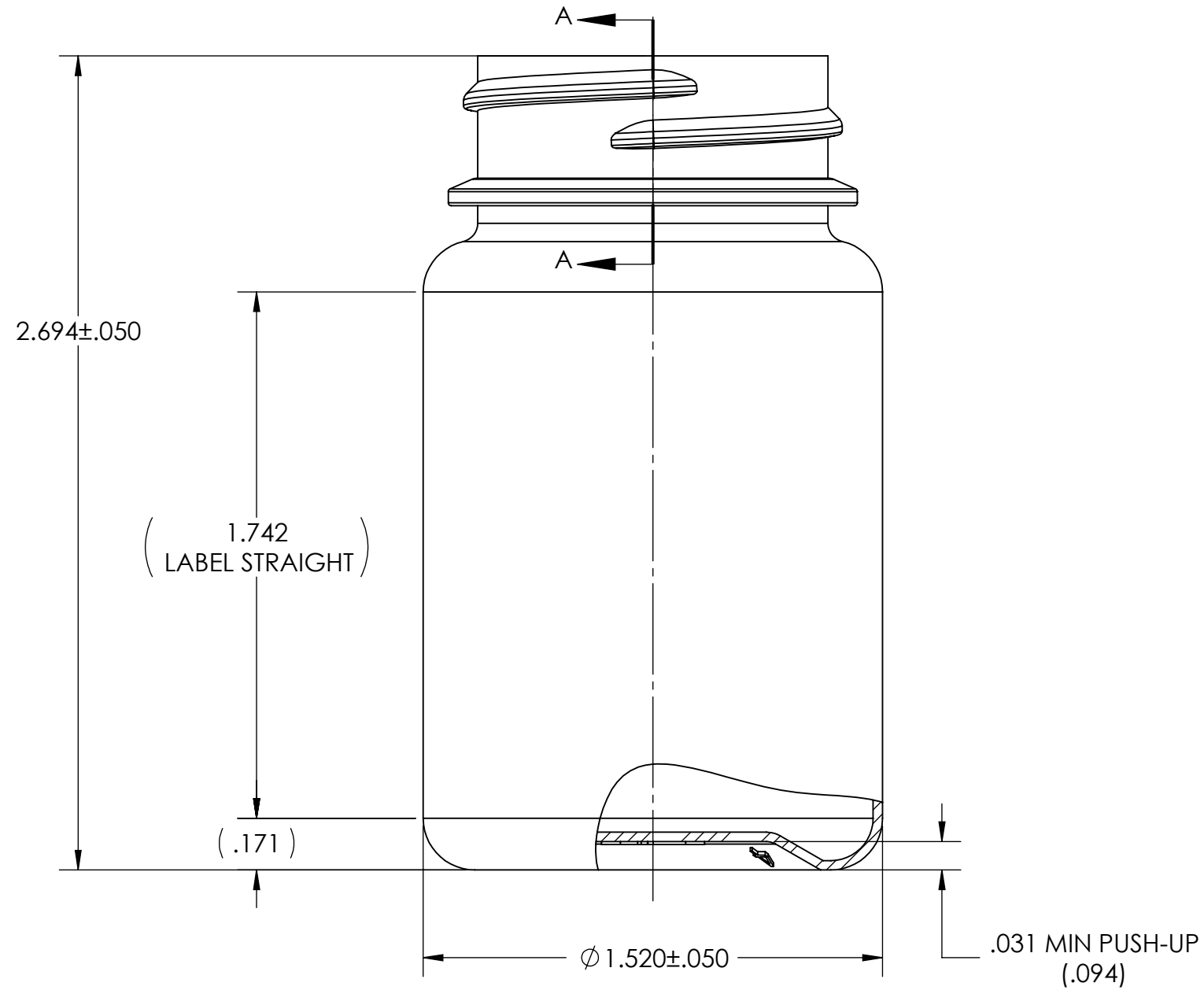
PROCESSING: This material is considered to be thermally stable in the normal and customary processing range of 350° - 450° F. Extended polymer and concentrate residence time in the process equipment may require that process temperature profiles be reviewed and/or adjusted to insure a proper and suitable product.

Date: July 8, 2020

NOTES:

1. DO NOT SCALE DRAWING.
2. ALL NECK FINISH DIAMETER DIMENSIONS ARE THE AVERAGE OF TWO MEASUREMENTS TAKEN ACROSS THE MAJOR AND MINOR AXES. THE LIMITS OF OVALITY ARE (.029").
3. THIS DRAWING SUPERSEDES FORMER SETCO DRAWING # D97-07.
4. MIN WALL THRU LABEL AREA TO BE .020"

LET	REVISION DESCRIPTION	BY	ECN #	DATE
A	RELEASED TO WINDCHILL	KRM	17110665	10/13/2011
B	REVISED COMPANY LOGO	KRM	17110665-1	2/6/2012
C	RELEASED FOR PRODUCTION	KRM	17110665-2	2/29/2012
D	CORRECTED TYPO: B33PS50H WAS B33RD50H	KRM	RCT130260	8/20/2013



MOLD #J19

PART DATA	
MATERIAL	HDPE/PP
ESTIMATED WEIGHT	8.2g ± 1.0g
OVERFLOW CAPACITY	62.2cc ± 3.5cc
NECK FINISH	M33-SP400

← .XXX → BASIC DIMENSIONS	← (.XXX) → REFERENCE DIMENSIONS	← .XXX → INSPECTION DIMENSIONS
------------------------------	------------------------------------	-----------------------------------

THIS DRAWING IS NOT A CONTROLLED DOCUMENT IF PRINTED OR COPIED FROM THE APPROVED VAULTING LOCATION

THIS DRAWING HAS BEEN RELEASED FOR PRODUCTION.

TOLERANCE UNLESS SPECIFIED	 BERRY PLASTICS CORPORATION AND SUBSIDIARIES LEADERSHIP BY DESIGN 101 OAKLEY STREET EVANSVILLE, INDIANA 47706 TEL. (812) 424-2904	CONFIDENTIAL			
xxx +/- .031		PRODUCT NAME: B33PS50H	DRAWING TYPE: CUSTOMER		
xx +/- .063		DESCRIPTION: 50/60cc PACKER			
x +/- .094		DRAWING NO.: CP-111023-PRTO1	PROJECT #: 111023		
Fractional +/- 1/8"		CREATED BY: K. MCWILLIAMS	CREATION DATE: 10/13/11		
Angles +/- 1/2°		SHEET 1 of 1	DRAWING VERSION D.2	SCALE: 2:1	SHEET SIZE C