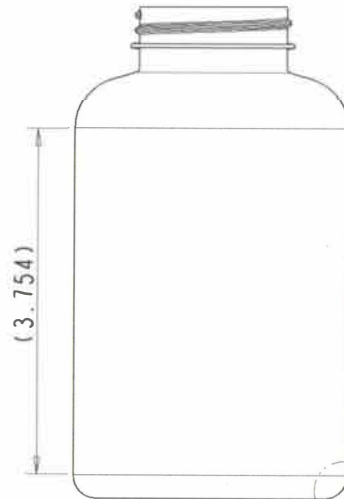
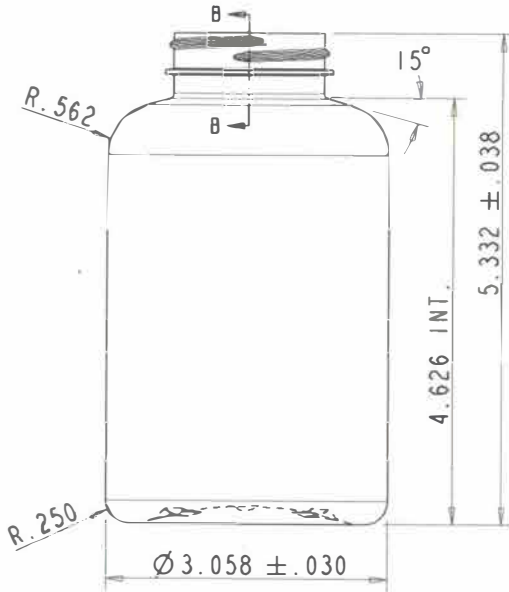
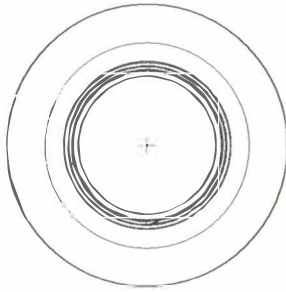


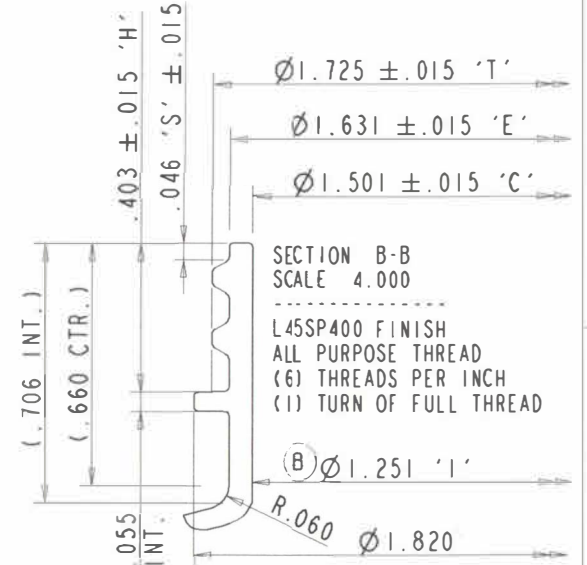
REV	DATE	BY	REVISION
A	102715	ES	REDRAWN FROM DWG. C-951P'DE-R1.
B	012216	ES	ADDED 'I' DIM.
C	051017	ES	UPDATED PUSHUP ENGRAVING.
D	081518	ES	ADDED MIN. WALL LOCATION & NOTE 5.



SCALE 0.750

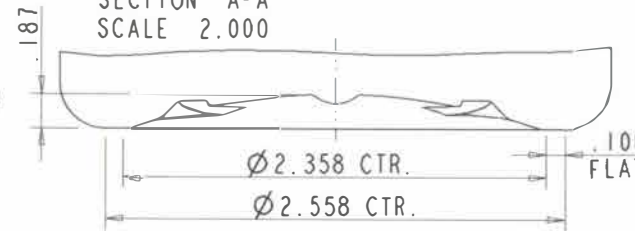


Ø .012" MIN. WALL



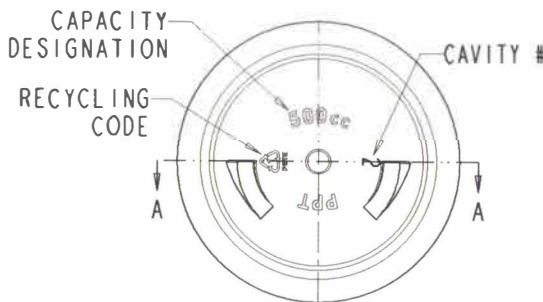
SECTION B-B
SCALE 4.000
L45SP400 FINISH
ALL PURPOSE THREAD
(6) THREADS PER INCH
(1) TURN OF FULL THREAD

SECTION A-A
SCALE 2.000



NOTES:

- 1 - MOLD NO. - 400122
- 2 - MAX. VARIATION IN AVERAGE DIAMETER BETWEEN TOP AND BOTTOM NOT TO EXCEED .010
- 3 - ALL DIMENSIONS APPLY AS MOLDED
- 4 - MAXIMUM OUT OF ROUNNESS ON BODY OF CONTAINER NOT TO EXCEED .015
- 5 - .012" MIN. WALL THICKNESS.



RESTRICTED, CONFIDENTIAL DOCUMENT

THIS DOCUMENT AND THE INFORMATION HEREON IS THE SOLE AND EXCLUSIVE PROPERTY OF PERFORMANCE PLASTIC TECHNOLOGIES AND IS DESIGNATED BY STR-004 AND, IS TO BE CONTAINED IN STRICTLY CONFIDENTIAL AND NOT TO BE DISCLOSED TO ANY OTHER PARTY WITHOUT THE EXPRESS WRITTEN APPROVAL OF PPT. IT IS THE POLICY OF PPT TO PROTECT ALL INFORMATION THEREON. IT WILL BE ADVISORIED IN STRICTEST CONFIDENCE. (2) WILL NOT BE REPRODUCED, IN WHOLE OR IN PART, IN ANY MANNER, WITHOUT THE EXPRESS WRITTEN APPROVAL OF PPT. (3) WILL NOT BE DISCLOSED TO ANY OTHER PARTY WITHOUT THE EXPRESS WRITTEN APPROVAL OF PPT AND, (4) WILL BE PROMPTLY AND VOLUNTARILY DESTROYED, WITH ANY AND ALL COPIES, TO THE EXTENT OF THE REQUEST BY PPT.

FILE NAME
XXXX_500cc-STR-SIDE
(15-023-01-D)



500 cc Cⁱ ROUND WIDE MOUTH PACKER
L45SP400 FINISH

SCALE: 1.4:1 DATE: 10-07-2015 SHEET 1 OF 1

53.92 SQUARE INCHES	14.17 SQUARE INCHES	45 ± 1	PET	525 ± 11 cc (17.75 ± .37 fl oz)
SURFACE AREA BELOW BASE OF NECK	AREA AT PART LINE BELOW BASE OF NECK	GRAMS	NAT'L.	OVERFLOW CAPACITY