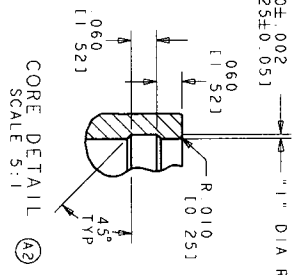
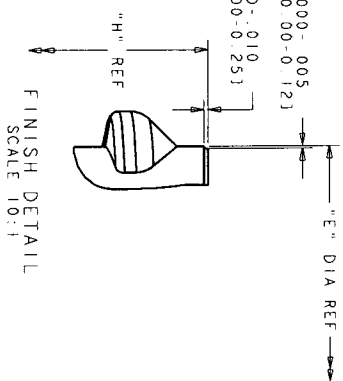
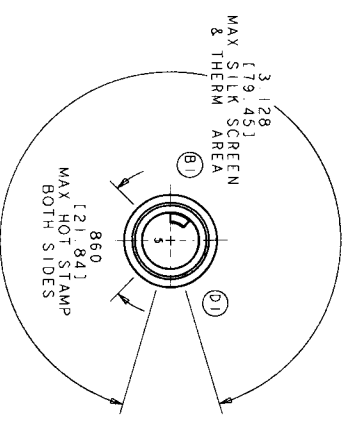
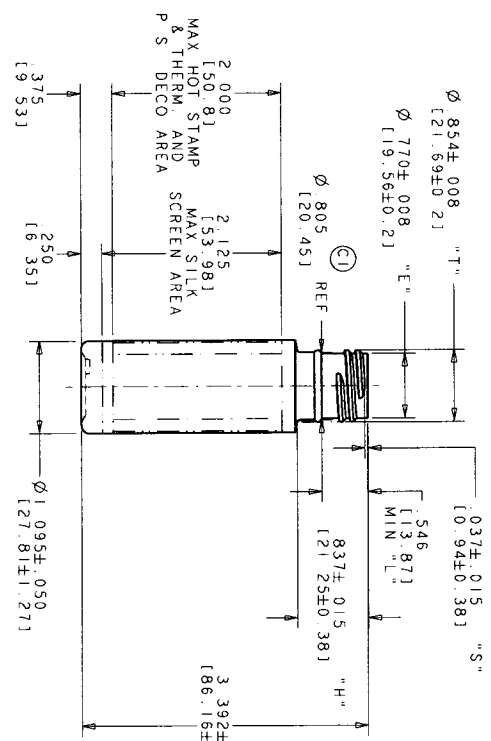
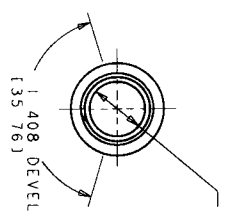


NOTICE
 INFORMATION CONTAINED HEREIN CONSTITUTES
 INFORMATION OF TRADE SECRETS, AND IS
 TO BE KEPT CONFIDENTIAL AND NOT TO BE
 COPIED, REPRODUCED, OR DISSEMINATED
 WITHOUT THE WRITTEN PERMISSION OF
 THE COMPANY.



- NOTES**
- M22SP415 FINISH MODIFIED BUTTRESS THREADS.
 - TOTAL SQUARE INCH AREA AT PARTLINE - 3.13 SQ IN. (20.19 SQ CM)
 - DECORATING DIMENSIONS SHOWN ARE MAX RECOMMENDED AREAS
 - MIN WALL = 0.13" (0.33)

DIMENSIONS NOT TOLERANCED ARE PER S P I STANDARDS
 DIMENSIONAL TOLERANCES UNLESS OTHERWISE SPECIFIED ± 0.0000"
 NOTE - DIMENSIONAL TOLERANCES DO NOT APPLY TO FINISH DIMENSIONS OR TO LOCATION OF HILL POINT

WGT	HDPE	1.38 ± 0.23 CC	37.5 ± 0.23 CC
6.0		1.30 ± 0.08 FL OZ	1.21 ± 0.08 FL OZ
1-5161		C-1-5161-01A-00	A1

REV	DESCRIPTION	DATE
A	1.0 FL OZ WAS C-2957 CC	1/13/24
B	1.0 FL OZ WAS C-2957 CC	1/13/24
C	1.0 FL OZ WAS C-2957 CC	1/13/24
D	1.0 FL OZ WAS C-2957 CC	1/13/24
E	1.0 FL OZ WAS C-2957 CC	1/13/24
F	1.0 FL OZ WAS C-2957 CC	1/13/24
G	1.0 FL OZ WAS C-2957 CC	1/13/24

1.0 FL OZ - 2957 CC
 STYLE-LINE CYLINDER

Artisan Packaging
 Released - Pending Customer Approval