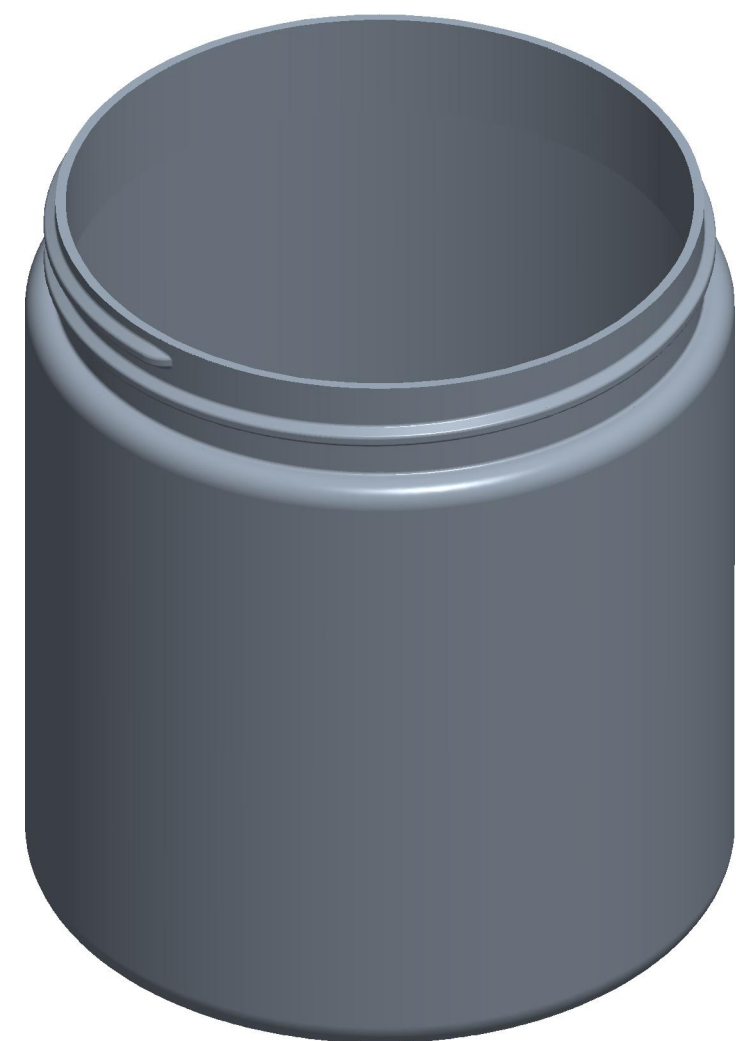
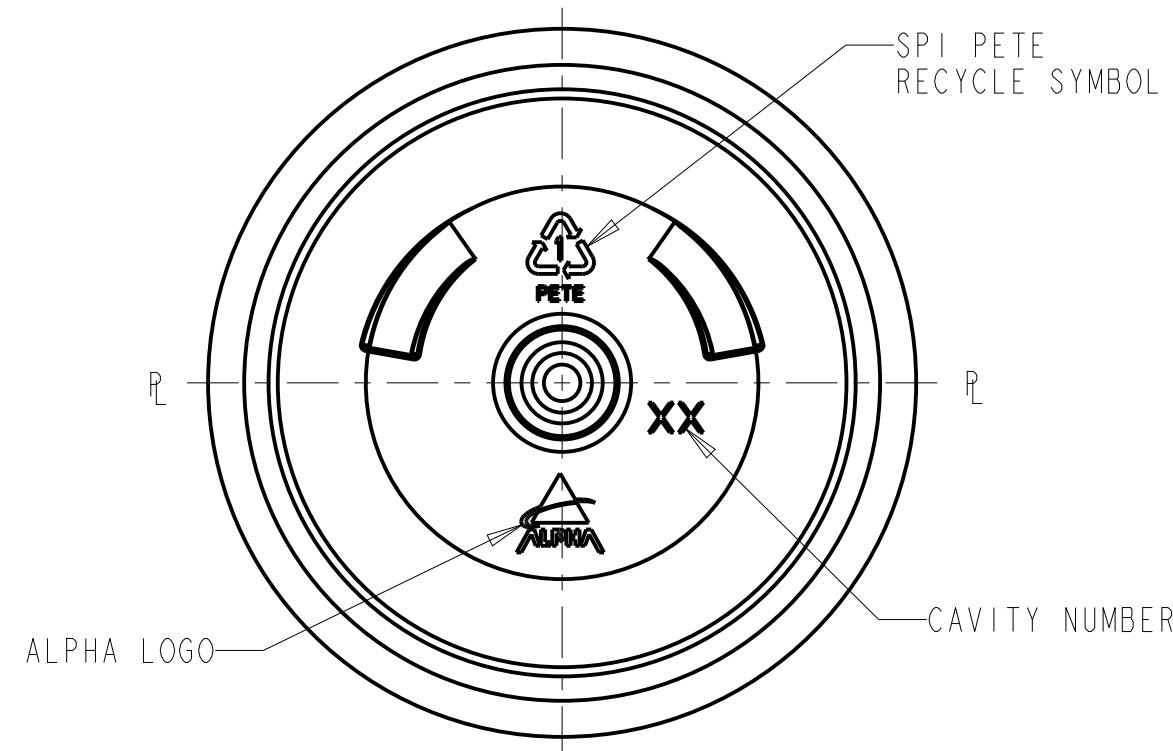
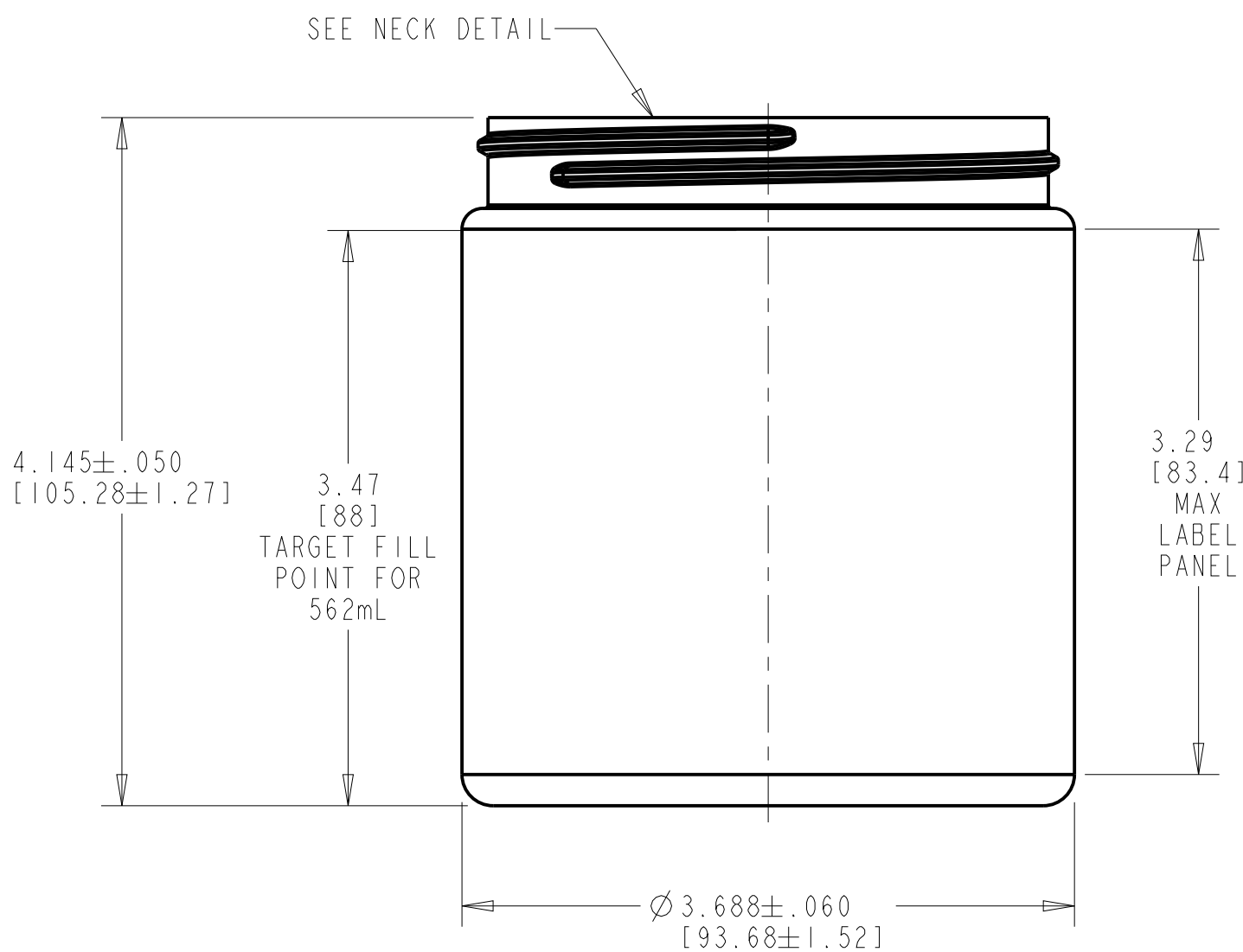
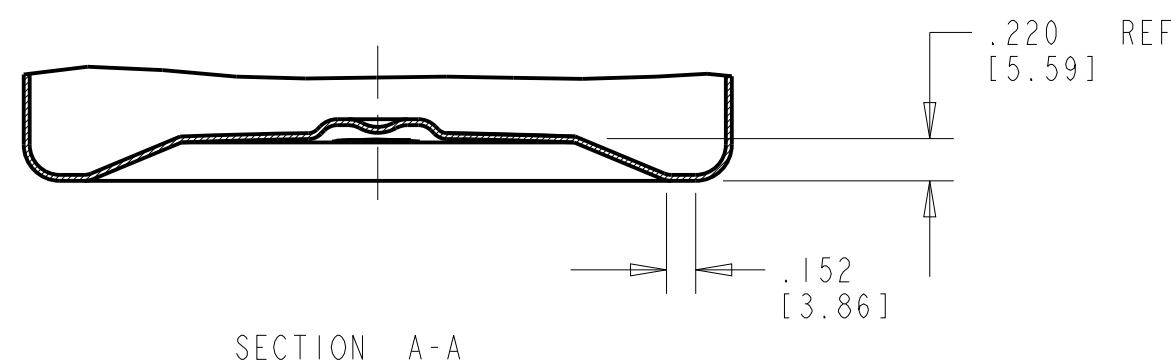



NECK DETAIL
SCALE: 1:1

- FINISH SPECIFICATIONS:**
- 1. FINISH: L89-400
 - 2. NO. OF TURNS: 1-1/8 FULL TURNS
 - 3. THREADS PER INCH: 5
 - 4. THREAD START: 90° FROM P.L. (AS SHOWN)



- NOTES:**
- 1. CRITICAL DIMENSIONS ARE SHOWN WITH TOLERANCES. CRITICAL DIMENSION TO BE USED FOR QC PURPOSES.
 - 2. ALL OTHER DIMENSIONS TO BE USED FOR REFERENCE ONLY.

						THIS ARTICLE CONTAINS CONFIDENTIAL INFORMATION PROPRIETARY TO ALPHA PACKAGING. THIS ARTICLE MAY NOT BE DISCLOSED, REPRODUCED, TRANSFERRED OR MANUFACTURED WITHOUT PRIOR WRITTEN AUTHORIZATION FROM ALPHA PACKAGING. © Copyright, 2020, Alpha Packaging, Inc.				 Alpha Packaging, Inc. (314) 427-4300 (800) 421-4772		
						TITLE: 19 oz JAR						
						TOLERANCES: UNLESS OTHERWISE SPECIFIED		DRAWN BY: JAZ	NECK: L89-400	WEIGHT (g): 43.5 ±2.5		
B	343	"H" WAS ±.015	JAZ	May-26-21		DECIMALS .XX± .XXX± .XXXX±	SEE NOTE 1	DATE: Oct-23-20	MIN WALL (in): .012	OVERFLOW (cc): 663.0 ±13.0		
A	295	THIS DRAWING SUPERSEDES DRAWING NUMBER 19JRISS89L400 & UPDATED THE DRAWING TO LATEST NPD STANDARDS	JAZ	Oct-23-20		FRACTIONS ±		SCALE: 1.000	CUSTOMER: STOCK	3D FILE No: 10A1172		
REV	ECR	DESCRIPTION	BY	DATE		ANGLES ±		SHEET: 1 of 1	MATERIAL: PET	DRAWING No: 10A1172	REV: B	
								NPD No: N/A				