



1 PLANT STREET  
PLATTSBURGH, NY 12901  
TEL 518.561.1812  
FAX 518.561.0017  
[MRPCAP.COM](http://MRPCAP.COM)

## Product Data Sheet

### MRP-PP30-1 Grade

### Polypropylene, Homopolymer Plastic Resin

#### Product Description

MRP-PP30-1 is a high flow polypropylene homopolymer resin designed for injection molding applications requiring good balance stiffness, excellent part finish, process ability, and good mold release.

#### Compliant to the Following Regulatory Standards:

FDA-21 CFR 177.1520(c)

EU 10/2011, EC 2002/72

RoHS

Proposition 65

CONEG/Heavy Metal

Typical Properties	Method	Typical Value	Unit
<b>Physical</b>			
Melt Mass-Flow Rate (MFR) (230°C/2.16 kg)	ASTM D1238	30	g/10 min
<b>Mechanical</b>			
Tensile Strength (50mm/min) (Yield)	ASTM D 638	33.1	MPa
Tensile Elongation (50mm/min) (Yield)	ASTM D 638	10	%
Flexural Modulus – 1% Secant (1.3 mm/min)	ASTM D790A	1380	MPa
Hardness, Rockwell R	ASTM D785	104	-
<b>Impact</b>			
Notched Izod impact (23 °C, Method A)	ASTM D 256A	37	J/m
<b>Thermal</b>			
Heat Deflection (Softening Point) Unannealed DTLU @ 66psi	ASTM D 648	91	°C
Processing Range	-----	400 – 500	°F


For further regulatory information contact Mold-Rite Plastics customer service or sales department.

#### Notes:

These are typical properties not to be construed as specifications.

Mold-Rite Plastics warrants this grade to meet typical data values and physical, chemical, and processing properties.

All results were obtained from manufacturer product data sheets (where applicable). The data are intended as a general guide, only, and do not necessarily represent results that may be obtained, elsewhere. The use of Mold-Rite Plastics products must be guided by the users' own methods for selection of proper formulation. Mold-Rite Plastics disclaims any responsibility for misuse or misapplication of its products. Mold-Rite Plastics' liability and customer's exclusive remedy for any claims arising out of sales of its products are expressly limited to customer option for replacement (not to exceed the purchase price) with the addition of transportation charges, on material for which damage is claimed.

	<b>Raw Material Product Data Sheet</b>	
	<b>Product Name:</b> MRPBK01	<b>Revision #:</b> A
	<b>Revision Date</b>	August 14, 2019
	<b>Effective Date</b>	October 14, 2019

**Product Name:**

MRPBK01

**Product Description:**

FDA Compliant black colorant intended to be used with injection-molded plastic resin

**Product Data:**

Additives None

<u>Typical Properties</u>	<u>Typical Value</u>
Delta E Tolerance	Less than 2.00
Visual Evaluation	Visual match to approved color standard

<u>FDA Compliance/Status</u>		
FDA, Title 21 CFR Food & Drug Contact	<input checked="" type="checkbox"/> Compliant	<input type="checkbox"/> Not

This colorant formulation has been manufactured using FDA approved ingredients and, when used appropriately (with an FDA approved resin), will meet FDA contact applications regulated under the provisions of the Food, Drug, and Cosmetic Act (and subsequent amendments as outlined in Title 21 of the Code of Federal Regulation.

<u>Additional Compliance/Status (and amendments as of the date of this document)</u>		
Proposition 65, Safe Drinking Water and Toxic Enforcement Act	<input checked="" type="checkbox"/> Compliant	<input type="checkbox"/> Not
CONEG, Model Toxics in Packaging Legislation	<input checked="" type="checkbox"/> Compliant	<input type="checkbox"/> Not
EU 2015/863, as regards the list of restricted substances, RoHS	<input checked="" type="checkbox"/> Compliant	<input type="checkbox"/> Not

For further regulatory information, please contact Mold Rite Plastic's customer service or sales department.

*This product data sheet addresses all colorants that meet the above requirements & specifications. Data was obtained from supplier product data sheets (where applicable). This data is intended to be used as a guide only. It is ultimately the customer's responsibility to determine the suitability of the material for their specific application, and to be responsible for assuring compliance with all applicable laws and regulations.*



# PRODUCT DATA SHEET

## HS 035 Lite/PET

MRP Description: (21L)HS035.008 PB/PET R SFYP

### PRODUCT DESCRIPTION

**Description:** A paper-backed aluminum foil coated with a clear heat sealable coating blend of high molecular weight ethylene and vinyl acetate copolymers on the foil.

**FDA Status:** Complies with Federal Regulations of H.E.W., FDA, sections 175.105, 175.300, 176.170, 176.180, 177.1350, 177.1630, 178.3710, and 182.1.

### RECOMMENDED STORAGE CONDITIONS

The material should be stored in well-ventilated area (temp. 60° - 80°F; RH - 40% - 60%). Material and lined closures are heat sensitive. Storage or shipping temperatures should not be in excess of 105°F. Curling, blocking, splitting, or foil separation may result. If material becomes chilled, it should be stored under the recommended conditions until stabilized. Avoid storing closure liner materials over 60 days. Metal foil is prone to corrosion.

### PHYSICAL AND CHEMICAL PROPERTIES

1. **Color** Aluminum
2. **Thickness, mils**
  - a) Overall 8.51 - 10.63
  - b) Heat Seal and film 1.45 - 1.95
  - c) Aluminum foil 0.31 - 0.38
  - d) Backing and film 6.75 - 8.30
3. **Basis Wt. Lbs./Ream 3000 ft.<sup>2</sup>**
  - a) Overall 128.65 - 169.55
  - b) Heat Seal and film 28.50 - 42.90
  - c) Aluminum foil 13.30 - 16.20
  - d) Backing and film 86.85 - 110.45
4. **Heat Seal Coating**
  - a) Melting Point °F 150 - 160
  - b) Blocking Point °F 130 - 135
5. **Gas Transmission: cc/cin<sup>2</sup>/24hrs/1atm**
  - a) Oxygen near zero
6. **Water Vapor Transmission**
  - a) gm/cin<sup>2</sup>/24hrs/100°F/90%RH near zero

### SUGGESTED PRODUCT USES

Material is an induction heat sealable tamper indicating innerseal which can be used for over-the-counter drug products on Polyethylene, Glass\*, PET, PVC, Polystyrene, and Polypropylene.

**Dry Products**  
**Fruit Juices**  
**Milk**

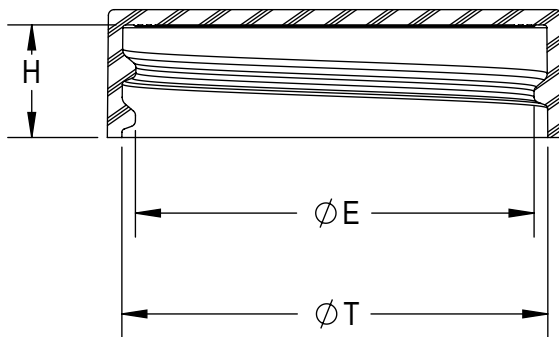
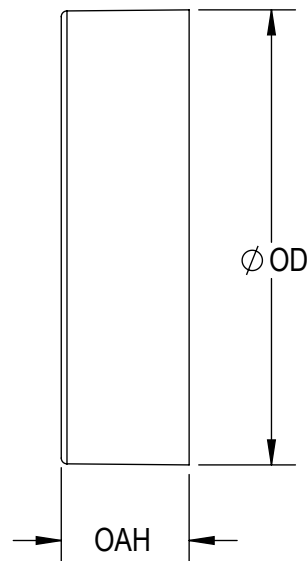
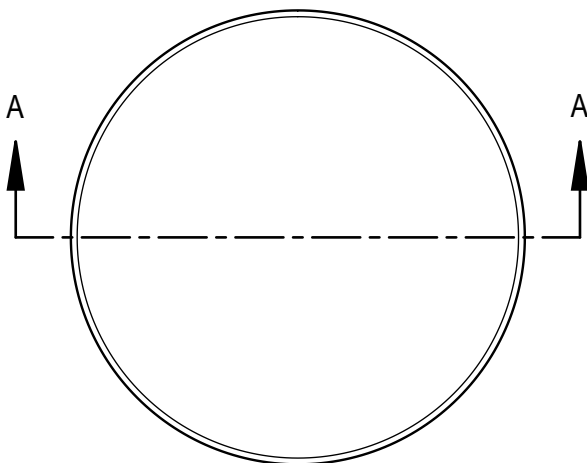
**Glass Cleaner**  
**Peroxide**  
**Spices**

Product applications listed above are a partial listing and do not cover all suitable applications. These are suggestions for general categories and user must test for suitability for their specific product. Not suitable for products containing oil.

*\*Glass must be treated for proper adhesion.*

PRODUCT NAME HS035 LITE/PET  
Rev. 042711

The technical information and suggestions for use made herein are based on SANCAP Liner research and experience and are believed to be reliable, but such information and suggestions do not constitute a warranty, and no patent liability can be assumed. Since SANCAP Liner has no control over the conditions under which the product is transported, stored, handled, used, or applied, buyer must determine for themselves, by preliminary tests or otherwise, the suitability of the product for their purposes. All products are sold subject to SANCAP Liner's written warranty, which is in lieu of all other warranties or merchantability and fitness for a particular purpose. SANCAP Liner's liability on any basis is limited to the price of the product used.



SECTION A-A

THREAD DETAIL INFORMATION  
6 THREADS PER INCH, 0.167 PITCH

REFERENCE	TOLERANCE	DIMENSION	UNITS
E	±0.010 [0.25]	1.395 [35.43]	in [mm]
T	±0.010 [0.25]	1.487 [37.77]	in [mm]
H	±0.008 [0.20]	0.392 [9.96]	in [mm]
OAH	±0.008 [0.20]	0.443 [11.25]	in [mm]
OD	±0.010 [0.25]	1.576 [40.03]	in [mm]
PART WEIGHT	± 0.30	2.80	g

STATIC TORQUE RECOMMENDATION  
17-26 in-lbs  
THIS REQUIREMENT MAY VARY DEPENDING  
UPON BOTTLE MATERIAL, NECK FINISH, AND  
CAPPING EQUIPMENT

DRAWING TYPE : CUSTOMER

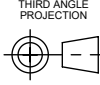
REPLACES DRAWINGS:  
C-1008

DIMENSIONS ENCLOSED IN ( )  
INDICATE REFERENCE  
DIMENSIONS AND NO TOLERANCE  
LIMITS ARE ESTABLISHED

TOLERANCES UNLESS OTHERWISE SPECIFIED

DIMENSION (inches)	TOLERANCE	DIMENSION (mm)	TOLERANCE
0-0.787	±0.006	0-20	±0.152
0.788-1.181	±0.008	21-30	±0.203
1.182-2.756	±0.012	31-70	±0.305
2.757-3.937	±0.016	71-100	±0.406
3.938-5.096	±0.020	101-150	±0.508
5.097-7.874	±0.024	151-200	±0.610
7.875-9.843	±0.032	201-250	±0.813
ANGULAR TOLERANCE ± 2°			
PROPRIETARY AND CONFIDENTIAL			

THIS DRAWING IS PROTECTED BY COPYRIGHT AND CONTAINS INFORMATION  
PROPRIETARY TO MOLD-RITE, WEATHERCHEM AND STULL TECHNOLOGIES.  
ANY REPRODUCTION, DISCLOSURE, OR USE OF ITS CONTENTS OR ANY PART  
THEREOF IS EXPRESSLY PROHIBITED EXCEPT AS MOLD-RITE, WEATHERCHEM  
AND STULL TECHNOLOGIES OTHERWISE MAY AGREE IN WRITING



DISTRIBUTION  
CODE  
**D**

DRAWING NAME  
**38-400 CT CLOSURE**  
S (Smooth - Smooth)

DRAWING NUMBER  
**CQA - 10014**

MATERIAL  
**POLYPROPYLENE**

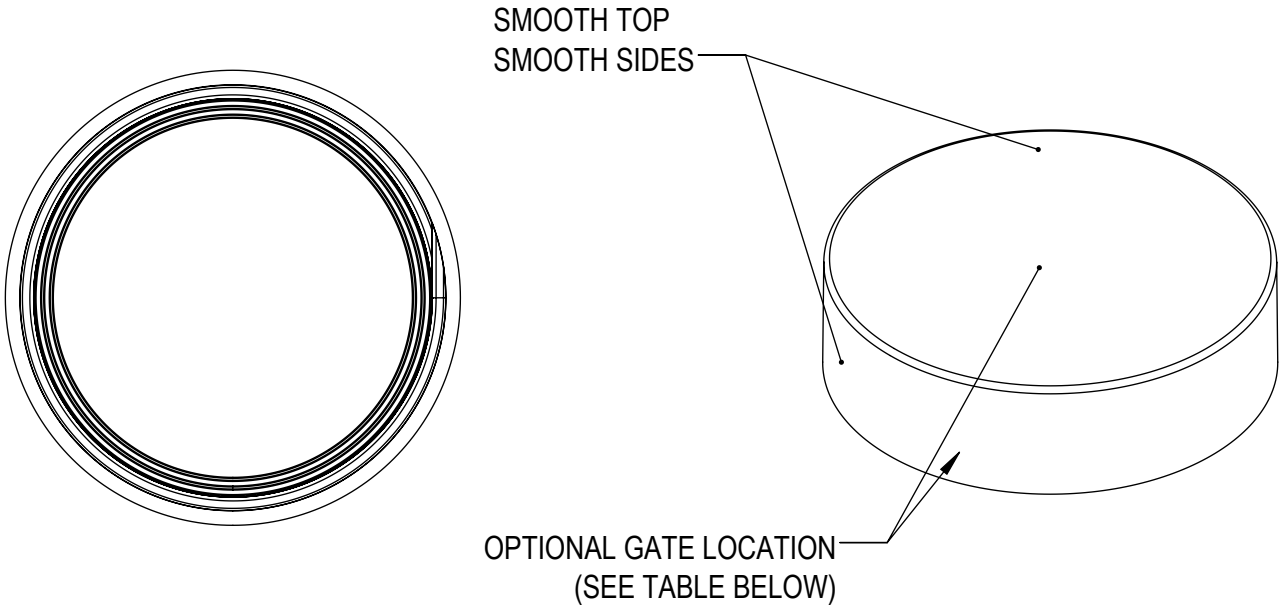
MODEL NUMBER:  
**PM 10498 38-400 CT**

SCALE	SHEET SIZE	SHEET	REV.NP
3:2	8.5in*11in	1 of 3	00.AC

THE CLOSURE DIMENSIONS  
DEPICTED ARE THOSE WHICH HAVE GENERALLY BEEN  
FOUND TO BE FUNCTIONAL BASED ON INDUSTRY  
EXPERIENCE BECAUSE OF VARIABILITY IN GLASS AND  
PLASTIC CONTAINER FINISHES, EACH CLOSURE/FINISH  
SYSTEM SHOULD BE INDIVIDUALLY EVALUATED AND  
TESTED TO ENSURE IT MEETS APPLICABLE  
PERFORMANCE CRITERIA. SEE QUALITY ASSURANCE  
SPECIFICATIONS FOR ADDITIONAL INFORMATION.

MOLD-RITE, WEATHERCHEM AND STULL TECHNOLOGIES  
RESERVES THE RIGHT TO REVISE ANY OR ALL  
SPECIFICATIONS AND REQUIREMENTS.

REVISIONS					
DATE	REV.	N/P	DESCRIPTION	ENG	DRW
2/26/2014	00	AA	INITIAL RELEASE	CM	LB
4/12/2017	00	AB	UPDATED DRAWING FORMAT	JDM	DAS
11/21/2017	00	AC	CORRECTED NOMINAL FOR OAH AND OD	JDM	JDM



MOLD NUMBER	GATE LOCATION
38011	SIDE
38012	SIDE
38017	TOP CENTER
38024	SIDE
38025	TOP CENTER
38030	TOP CENTER

THE CLOSURE DIMENSIONS DEPICTED ARE THOSE WHICH HAVE GENERALLY BEEN FOUND TO BE FUNCTIONAL BASED ON INDUSTRY EXPERIENCE BECAUSE OF VARIABILITY IN GLASS AND PLASTIC CONTAINER FINISHES, EACH CLOSURE/FINISH SYSTEM SHOULD BE INDIVIDUALLY EVALUATED AND TESTED TO ENSURE IT MEETS APPLICABLE PERFORMANCE CRITERIA. SEE QUALITY ASSURANCE SPECIFICATIONS FOR ADDITIONAL INFORMATION.

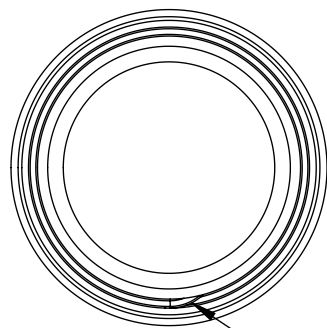
MOLD-RITE, WEATHERCHEM AND STULL TECHNOLOGIES RESERVES THE RIGHT TO REVISE ANY OR ALL SPECIFICATIONS AND REQUIREMENTS.

DRAWING TYPE : CUSTOMER

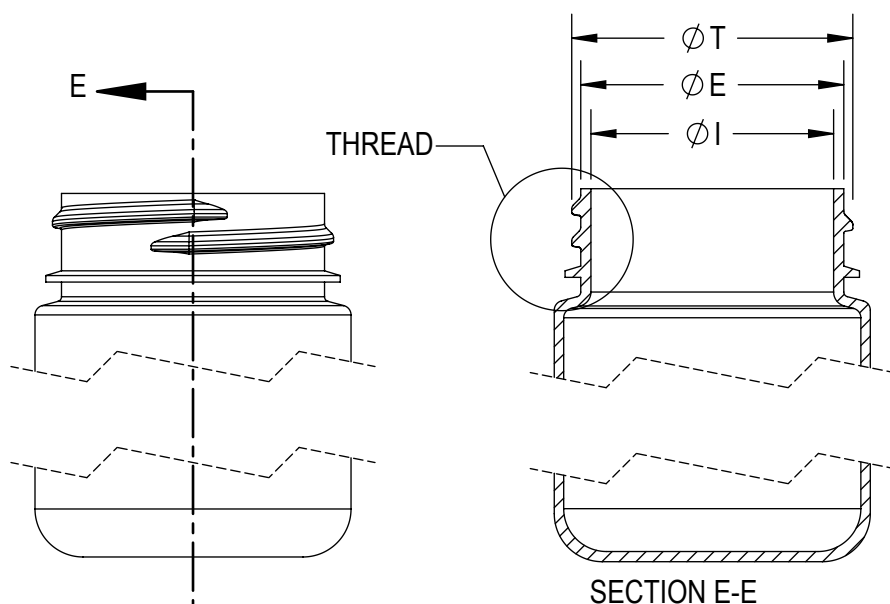
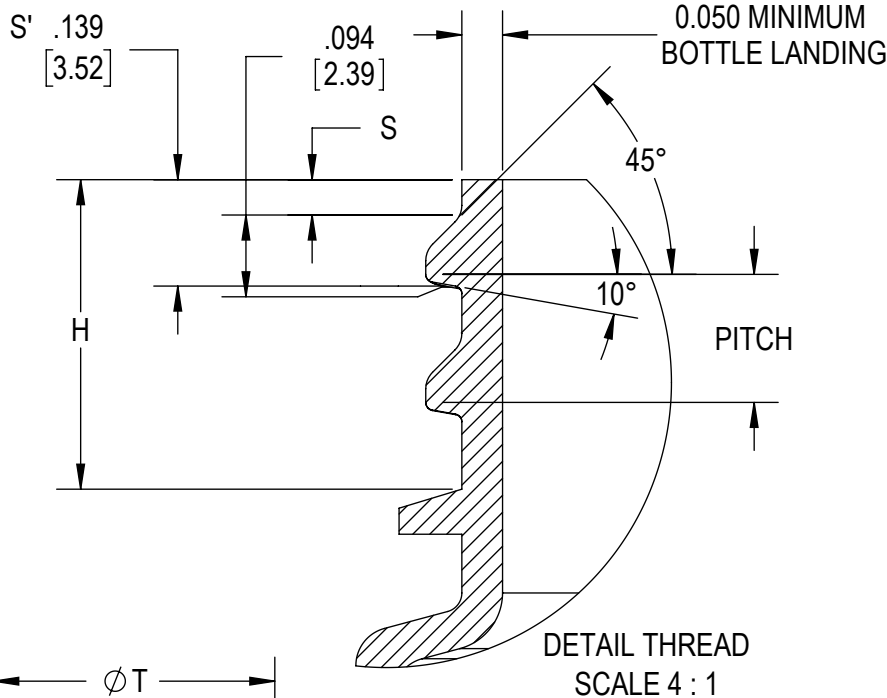
REFERENCES: 38011, 38012, 38017, 38024, 38025	DIMENSIONS ENCLOSED IN ( ) INDICATE REFERENCE DIMENSIONS AND NO TOLERANCE LIMITS ARE ESTABLISHED		
TOLERANCES UNLESS OTHERWISE SPECIFIED			
DIMENSION (inches)	TOLERANCE	DIMENSION (mm)	TOLERANCE
0-0.787	±0.006	0-20	±0.152
0.788-1.181	±0.008	21-30	±0.203
1.182-2.756	±0.012	31-70	±0.305
2.757-3.937	±0.016	71-100	±0.406
3.938-5.096	±0.020	101-150	±0.508
5.097-7.874	±0.024	151-200	±0.610
7.875-9.843	±0.032	201-250	±0.813
ANGULAR TOLERANCE ± 2°			
PROPRIETARY AND CONFIDENTIAL			
THIS DRAWING IS PROTECTED BY COPYRIGHT AND CONTAINS INFORMATION PROPRIETARY TO MOLD-RITE, WEATHERCHEM AND STULL TECHNOLOGIES. ANY REPRODUCTION, DISCLOSURE, OR USE OF ITS CONTENTS OR ANY PART THEREOF IS EXPRESSLY PROHIBITED EXCEPT AS MOLD-RITE, WEATHERCHEM AND STULL TECHNOLOGIES OTHERWISE MAY AGREE IN WRITING			

**MRP**  
MOLD-RITE PLASTICS®  
Innovative • Reliable • Responsive

THIRD ANGLE PROJECTION	DISTRIBUTION CODE <b>D</b>	DRAWING NAME <b>38-400 CT CLOSURE S (Smooth - Smooth)</b>	
DRAWN BY: DAS 4/12/2017		DRAWING NUMBER <b>CQA - 10014</b>	
ENG APPR: JDM 3/21/2018		MATERIAL <b>POLYPROPYLENE</b>	
QA APPR: REL 03/22/2018		MODEL NUMBER: <b>PM 10498 38-400 CT</b>	
SCALE <b>3:2</b>	SHEET SIZE <b>8.5 X 11</b>	SHEET <b>2 of 3</b>	REV.NP <b>00</b>



THREAD START



SECTION E-E

REFERENCE	TOLERANCE	UNITS	DIMENSIONS
E	±0.012 [0.30]	in [mm]	1.370 [34.80]
T	±0.012 [0.30]	in [mm]	1.464 [37.19]
I	MINIMUM	in [mm]	0.987 [25.07]
S	±0.015 [0.38]	in [mm]	0.046 [1.17]
H	MINIMUM	in [mm]	0.403 [10.24]
TPI			6
PITCH		in	0.167 [4.24]

NOTE: THE NOMINAL ORIENTATION ILLUSTRATED IS BASED ON NOMINAL DIMENSIONS OF BOTH THE CLOSURE AND THE RECOMMENDED NECK FINISH. FOR EXACT ORIENTATION EACH BOTTLE SHOULD BE EVALUATED ON A CASE BY CASE BASIS.

THE CLOSURE DIMENSIONS DEPICTED ARE THOSE WHICH HAVE GENERALLY BEEN FOUND TO BE FUNCTIONAL BASED ON INDUSTRY EXPERIENCE BECAUSE OF VARIABILITY IN GLASS AND PLASTIC CONTAINER FINISHES, EACH CLOSURE/FINISH SYSTEM SHOULD BE INDIVIDUALLY EVALUATED AND TESTED TO ENSURE IT MEETS APPLICABLE PERFORMANCE CRITERIA. SEE QUALITY ASSURANCE SPECIFICATIONS FOR ADDITIONAL INFORMATION.

MOLD-RITE, WEATHERCHEM AND STULL TECHNOLOGIES RESERVES THE RIGHT TO REVISE ANY OR ALL SPECIFICATIONS AND REQUIREMENTS.

DRAWING TYPE : CUSTOMER

DIMENSIONS ENCLOSED IN ( ) INDICATE REFERENCE DIMENSIONS AND NO TOLERANCE LIMITS ARE ESTABLISHED

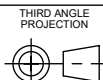
TOLERANCES UNLESS OTHERWISE SPECIFIED

DIMENSION (inches)	TOLERANCE	DIMENSION (mm)	TOLERANCE
0-0.787	±0.006	0-20	±0.152
0.788-1.181	±0.008	21-30	±0.203
1.182-2.756	±0.012	31-70	±0.305
2.757-3.937	±0.016	71-100	±0.406
3.938-5.096	±0.020	101-150	±0.508
5.097-7.874	±0.024	151-200	±0.610
7.875-9.843	±0.032	201-250	±0.813

ANGULAR TOLERANCE ± 2°

PROPRIETARY AND CONFIDENTIAL

THIS DRAWING IS PROTECTED BY COPYRIGHT AND CONTAINS INFORMATION PROPRIETARY TO MOLD-RITE, WEATHERCHEM AND STULL TECHNOLOGIES. ANY REPRODUCTION, DISCLOSURE, OR USE OF ITS CONTENTS OR ANY PART THEREOF IS EXPRESSLY PROHIBITED EXCEPT AS MOLD-RITE, WEATHERCHEM AND STULL TECHNOLOGIES OTHERWISE MAY AGREE IN WRITING



SOLIDWORKS

DISTRIBUTION CODE

D

DRAWING NAME

38-400 CT CLOSURE  
RECOMMENDED NECK FINISH

DRAWING NUMBER

CQA - 10014

MATERIAL

DRAWN BY.

DAS

4/12/2017

ENG APPR.

JDM

3/21/2018

QA APPR.

REL

03/22/2018

MODEL NUMBER:

SCALE

1:1

SHEET SIZE

8.5 X 11

SHEET

3 of 3

REV/N/P

00.AC