

SECTION A-A

THREAD DETAIL:
6 THREADS PER INCH, 0.167" PITCH

REFERENCE	TOLERANCE	UNITS	DIMENSION
E	±.010[0.25]	in [mm]	1.656 [42.06]
T	±.010[0.25]	in [mm]	1.752 [44.50]
H	±.010[0.25]	in [mm]	0.390[9.91]
OD	±.012[0.30]	in [mm]	1.850[46.99]
OAH	±.010[0.25]	in [mm]	0.445 [11.30]
PART WEIGHT	± 0.50	g	3.69

STATIC TORQUE RECOMMENDATION
17-27 in-lbs
THIS REQUIREMENT MAY VARY DEPENDING UPON BOTTLE MATERIAL, NECK FINISH, AND CAPPING EQUIPMENT

DRAWING TYPE : **CUSTOMER**

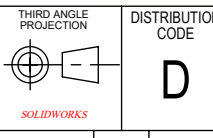
REPLACES DRAWINGS: C-1010
DIMENSIONS ENCLOSED IN () INDICATE REFERENCE DIMENSIONS AND NO TOLERANCE LIMITS ARE ESTABLISHED

TOLERANCES UNLESS OTHERWISE SPECIFIED			
DIMENSION (inches)	TOLERANCE	DIMENSION (mm)	TOLERANCE
0-0.787	±0.006	0-20	±0.152
0.788-1.181	±0.008	21-30	±0.203
1.182-2.756	±0.012	31-70	±0.305
2.757-3.937	±0.016	71-100	±0.406
3.938-5.096	±0.020	101-150	±0.508
5.097-7.874	±0.024	151-200	±0.610
7.875-9.843	±0.032	201-250	±0.813

THE CLOSURE DIMENSIONS DEPICTED ARE THOSE WHICH HAVE GENERALLY BEEN FOUND TO BE FUNCTIONAL BASED ON INDUSTRY EXPERIENCE BECAUSE OF VARIABILITY IN GLASS AND PLASTIC CONTAINER FINISHES, EACH CLOSURE/FINISH SYSTEM SHOULD BE INDIVIDUALLY EVALUATED AND TESTED TO ENSURE IT MEETS APPLICABLE PERFORMANCE CRITERIA. SEE QUALITY ASSURANCE SPECIFICATIONS FOR ADDITIONAL INFORMATION.

MOLD-RITE, WEATHERCHEM AND STULL TECHNOLOGIES RESERVES THE RIGHT TO REVISE ANY OR ALL SPECIFICATIONS AND REQUIREMENTS.

ANGULAR TOLERANCE ± 2°
PROPRIETARY AND CONFIDENTIAL
THIS DRAWING IS PROTECTED BY COPYRIGHT AND CONTAINS INFORMATION PROPRIETARY TO MOLD-RITE, WEATHERCHEM AND STULL TECHNOLOGIES. ANY REPRODUCTION, DISCLOSURE, OR USE OF ITS CONTENTS OR ANY PART THEREOF IS EXPRESSLY PROHIBITED EXCEPT AS MOLD-RITE, WEATHERCHEM AND STULL TECHNOLOGIES OTHERWISE MAY AGREE IN WRITING



DISTRIBUTION CODE: **D**
DRAWING NAME: **45-400 CT CLOSURE**
SS (Smooth Side - Smooth Top)

DRAWING NUMBER: **CQA - 10300**

DRAWN BY: JDM 6/3/2016

MATERIAL: **POLYPROPYLENE**

ENG APPR: BDG 8/17/2017

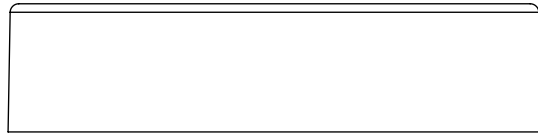
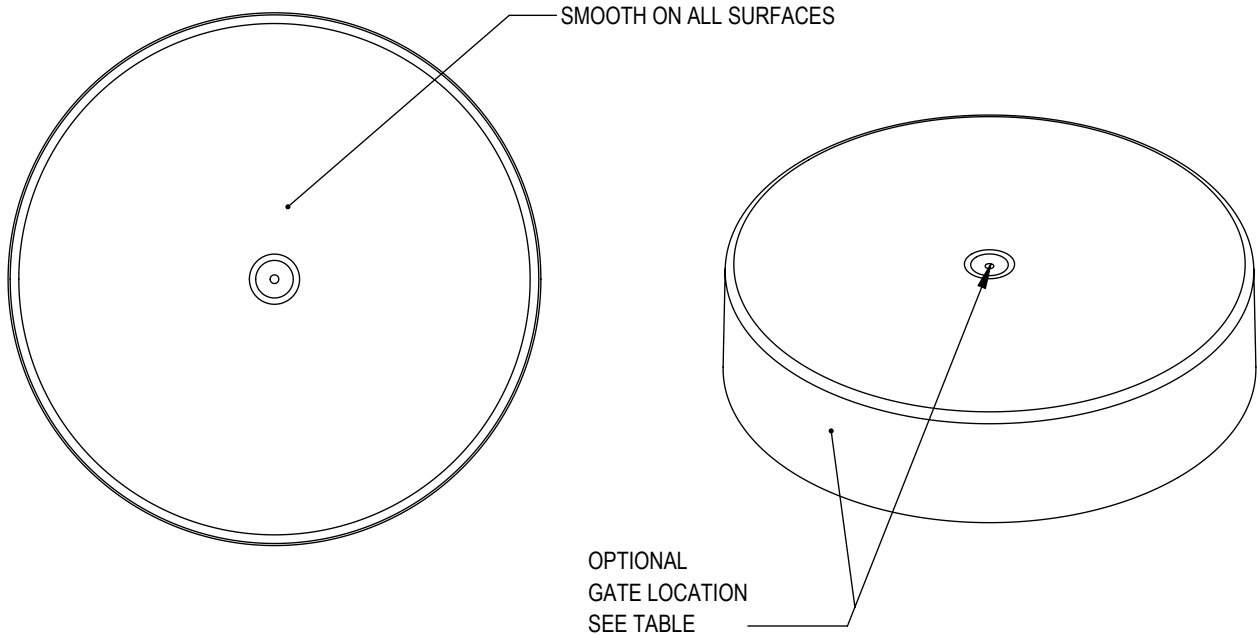
MODEL NUMBER: **PM 10297 45-400 CT**

QA APPR: REL 09/05/2017

SCALE	SHEET SIZE	SHEET	REV NP
1:1	8.5in*11in	1 of 3	00.AB

REVISIONS

DATE	REV.	N/P	PRODUCT DRAWING REQUEST	DESCRIPTION	ENG	DRW
6/3/2016	00	AA	PDR 16-025	UPDATE DRAWING FORMAT, REFER TO C-1010 FOR REVISION HISTORY	JDM	JDM
6/14/2017	00	AB	PDR 17-035	UPDATED OD TOLERANCE, T DIMENSION AND PART WEIGHT BASED ON HISTORICAL DATA, ADDED GATE LOCATION TABLE	BDG	BDG



MOLD NUMBER	GATE LOCATION
45001	SIDE
45003	SIDE
45005	SIDE
45007	SIDE
45011	TOP CENTER

DRAWING TYPE : CUSTOMER			
REFERENCES: 45001, 45003, 45005, 45007, 45011		DIMENSIONS ENCLOSED IN () INDICATE REFERENCE DIMENSIONS AND NO TOLERANCE LIMITS ARE ESTABLISHED	
TOLERANCES UNLESS OTHERWISE SPECIFIED			
DIMENSION (inches)	TOLERANCE	DIMENSION (mm)	TOLERANCE
0-0.787	±0.006	0-20	±0.152
0.788-1.181	±0.008	21-30	±0.203
1.182-2.756	±0.012	31-70	±0.305
2.757-3.937	±0.016	71-100	±0.406
3.938-5.096	±0.020	101-150	±0.508
5.097-7.874	±0.024	151-200	±0.610
7.875-9.843	±0.032	201-250	±0.813
ANGULAR TOLERANCE ± 2°			
PROPRIETARY AND CONFIDENTIAL			
THIS DRAWING IS PROTECTED BY COPYRIGHT AND CONTAINS INFORMATION PROPRIETARY TO MOLD-RITE, WEATHERCHEM AND STULL TECHNOLOGIES. ANY REPRODUCTION, DISCLOSURE, OR USE OF ITS CONTENTS OR ANY PART THEREOF IS EXPRESSLY PROHIBITED EXCEPT AS MOLD-RITE, WEATHERCHEM AND STULL TECHNOLOGIES OTHERWISE MAY AGREE IN WRITING			

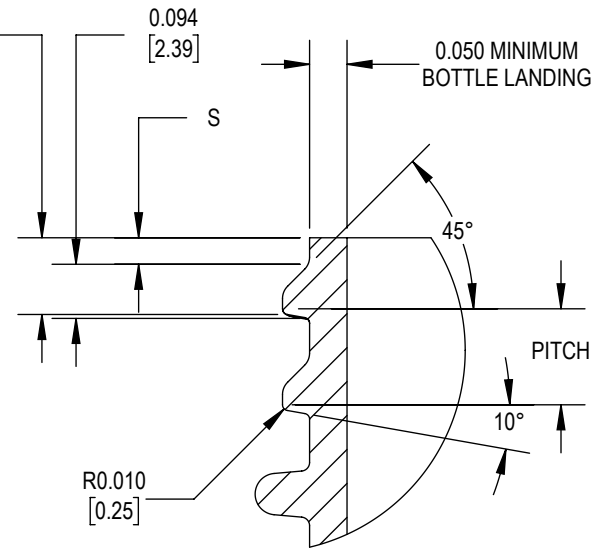
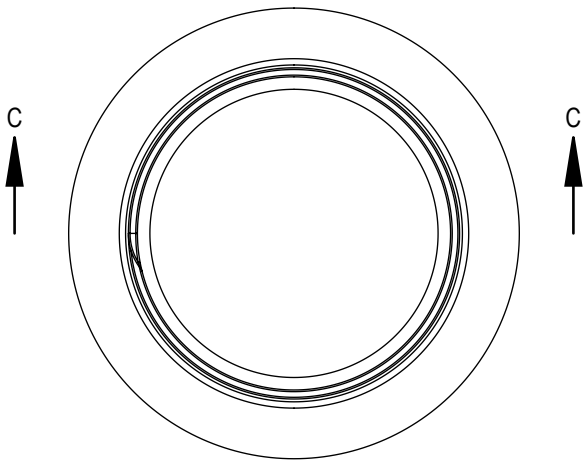
THE CLOSURE DIMENSIONS DEPICTED ARE THOSE WHICH HAVE GENERALLY BEEN FOUND TO BE FUNCTIONAL BASED ON INDUSTRY EXPERIENCE BECAUSE OF VARIABILITY IN GLASS AND PLASTIC CONTAINER FINISHES. EACH CLOSURE/FINISH SYSTEM SHOULD BE INDIVIDUALLY EVALUATED AND TESTED TO ENSURE IT MEETS APPLICABLE PERFORMANCE CRITERIA. SEE QUALITY ASSURANCE SPECIFICATIONS FOR ADDITIONAL INFORMATION.

MOLD-RITE, WEATHERCHEM AND STULL TECHNOLOGIES RESERVES THE RIGHT TO REVISE ANY OR ALL SPECIFICATIONS AND REQUIREMENTS.

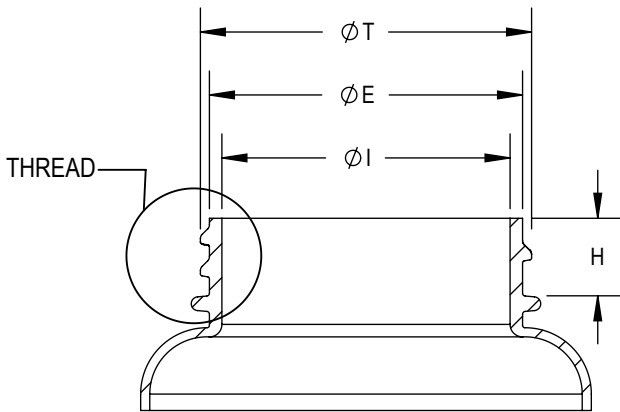


THIRD ANGLE PROJECTION	DISTRIBUTION CODE	DRAWING NAME			
	D	45-400 CT CLOSURE SS (Smooth Side - Smooth Top)			
DRAWN BY: JDM 6/3/2016		DRAWING NUMBER: CQA - 10300			
MATERIAL: POLYPROPYLENE		MODEL NUMBER: PM 10297 45-400 CT			
ENG APPR: BDG 8/17/2017	QA APPR: REL 09/05/2017	SCALE: 1:1	SHEET SIZE: 8.5 X 11	SHEET: 2 of 3	REV.NP: 00.AB

0.133
[3.38]
S' - CRITICAL FOR ORIENTATION
0.001" = 2 IN ROTATION



DETAIL THREAD
SCALE 3 : 1



SECTION C-C
SCALE 1 : 1

REFERENCE	TOLERANCE	UNITS	DIMENSION
E	± 0.012 [0.30]	in [mm]	1.631 [41.43]
T	± 0.017 [0.43]	in [mm]	1.725 [43.82]
I	MINIMUM	in [mm]	1.525 [38.74]
S	± 0.015 [0.38]	in [mm]	0.046 [1.17]
H	± 0.015 [0.38]	in [mm]	0.415 [10.54]
TPI			6
PITCH		in [mm]	0.167 [4.24]

NOTE: THE NOMINAL ORIENTATION ILLUSTRATED IS BASED ON NOMINAL DIMENSIONS OF BOTH THE CLOSURE AND THE RECOMMENDED NECK FINISH. FOR EXACT ORIENTATION EACH BOTTLE SHOULD BE EVALUATED ON A CASE BY CASE BASIS.

DRAWING TYPE : CUSTOMER

DIMENSIONS ENCLOSED IN () INDICATE REFERENCE DIMENSIONS AND NO TOLERANCE LIMITS ARE ESTABLISHED

TOLERANCES UNLESS OTHERWISE SPECIFIED

DIMENSION (inches)	TOLERANCE	DIMENSION (mm)	TOLERANCE
0-0.787	± 0.006	0-20	± 0.152
0.788-1.181	± 0.008	21-30	± 0.203
1.182-2.756	± 0.012	31-70	± 0.305
2.757-3.937	± 0.016	71-100	± 0.406
3.938-5.096	± 0.020	101-150	± 0.508
5.097-7.874	± 0.024	151-200	± 0.610
7.875-9.843	± 0.032	201-250	± 0.813

ANGULAR TOLERANCE $\pm 2^\circ$

PROPRIETARY AND CONFIDENTIAL

THIS DRAWING IS PROTECTED BY COPYRIGHT AND CONTAINS INFORMATION PROPRIETARY TO MOLD-RITE, WEATHERCHEM AND STULL TECHNOLOGIES. ANY REPRODUCTION, DISCLOSURE, OR USE OF ITS CONTENTS OR ANY PART THEREOF IS EXPRESSLY PROHIBITED EXCEPT AS MOLD-RITE, WEATHERCHEM AND STULL TECHNOLOGIES OTHERWISE MAY AGREE IN WRITING



SOLIDWORKS

DISTRIBUTION CODE

D

DRAWING NAME

45-400 CT CLOSURE
RECOMMENDED NECK FINISH

DRAWING NUMBER

CQA - 10300

DRAWN BY: JDM

DATE: 6/3/2016

MATERIAL

ENG APPR: BDG

DATE: 8/17/2017

MODEL NUMBER:

QA APPR: REL

DATE: 09/05/2017

SCALE

1:2

SHEET SIZE

8.5 X 11

SHEET

3 of 3

REV/N/P

00.AB