



FPT300F

Homopolymer Polypropylene

- Good Mold Release, Excellent Part Finish (Low Bloom)
- Suggested Uses Include Housewares, Caps and Closures, Mugs / Cups, Thin-Walled Containers

Property	Units	Typical Value	Test Method
Nominal Melt Flow Rate (230°C/2.16kg)	g/10 min	30	ASTM D1238
Tensile Strength at Yield (2 in/min, 50 mm/min)	psi MPa	4,800 33	ASTM D638
Elongation at Yield (2 in/min, 50 mm/min)	%	10	ASTM D638
Flexural Modulus (0.05 in/min, 1.3 mm/min, 1% secant)	psi MPa	200,000 1,379	ASTM D790A
Notched Izod Impact Strength at 23°C	ft-lbs/in J/m	0.7 37	ASTM D256A
Rockwell Hardness	R	104	ASTM D785

Information contained herein is considered accurate to our best knowledge. It is offered for your consideration and investigation, and is not to be construed as a representation or warranty, expressed or implied, for which Braskem assumes legal responsibility. Our warranties are limited to those expressly stated in formal contracts or in conditions of sale on our invoices and order acceptances. Conditions and methods of use vary and are beyond the control of Braskem. Braskem, therefore, disclaims any liability incurred as a result of the use of its products in accordance with the data contained herein. No information herein shall be construed as an offer of indemnity for infringement or as a recommendation to use these products in such a manner as to infringe any patent, domestic or foreign.

For cautions and other information relating to handling of
and exposure to this product, please see material safety
data sheet code number C4001 published by Braskem.

550 Technology Drive
Pittsburgh, PA 15219
1-800-223-8871

Revision Date: Monday,
March 23, 2009

www.braskem.com

MOLD-RITE PLASTICS LLC.
1 Plant Street P.O. Box 160
Plattsburgh NY 12901
(518)561-1812
<https://www.mrpcap.com>



Product Data Sheet

MRPWH01 White

Product Description

This specification designated by Mold-Rite Plastics covers all colorants that meet the typical value data listed below.

Regulatory Compliance

FDA – Title 21 CFR Section 170-199 for Food & Drug Contact

RoHS Compliant

CONEG/Heavy Metal Compliant

Proposition 65 Compliant

Typical Properties	Typical Value
Density	.90
Melt Index	30
Pellets	Standard
Recommended Let Down Ratio	50:1
Carrier Resin	PP
Estimated Heat Stability	450-500 °F
Visual Evaluation	Excellent
Additives	None
DE Tolerance	< 2.00

For further regulatory information, contact Mold-Rite Plastics customer service or sales department.

Notes: These are typical properties not to be construed as specifications. Mold-Rite Plastics reserves that right to include any other colorant that meets that above data values and regulatory requirements.

This product data sheet covers multiple colorant formulations that meet the above typical data values and regulatory requirements. All listed formulas have similar physical, chemical and processing properties. Listed known formulas; Polymer Concentrates – 10536, Penn Color 60W5221

All results were obtained from manufacturer product data sheets (where applicable). The data are intended as a general guide only and do not necessarily represent results that may be obtained elsewhere. The use of Mold-Rite Plastics products must be guided by the users own methods for selection of proper formulation. Mold-Rite Plastics disclaims any responsibility for misuse or miss application of its products. Mold-Rite Plastics liability and customer's exclusive remedy for any claims arising out of sales of its products are expressly limited at customer option for replacement not to exceed the purchase price plus transportation charges thereon in respect to any material which damage is claimed.



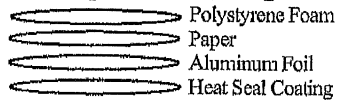
Product Data Sheet

MRP Description:(A01)MRPLN04.020 FOAM R SFYP

MRPLN04 – Universal Heat Seal Foam Liner

Product Description

This product is a 1 piece universal heat seal consisting of foam backing, paper, aluminum foil and heat seal layer.. This specification, designated by Mold-Rite Plastics, covers all liners that meet the typical value data listed below;



Regulatory Compliance

FDA Title 21 CFR Section 177.1210 (Closure with Sealing Gaskets for Food Containers,
RoHS Compliant
CONEG/Heavy Metal Compliant
Proposition 65 Compliant

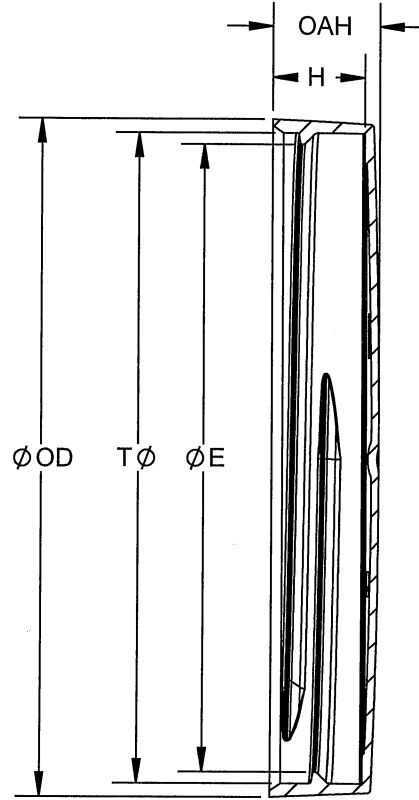
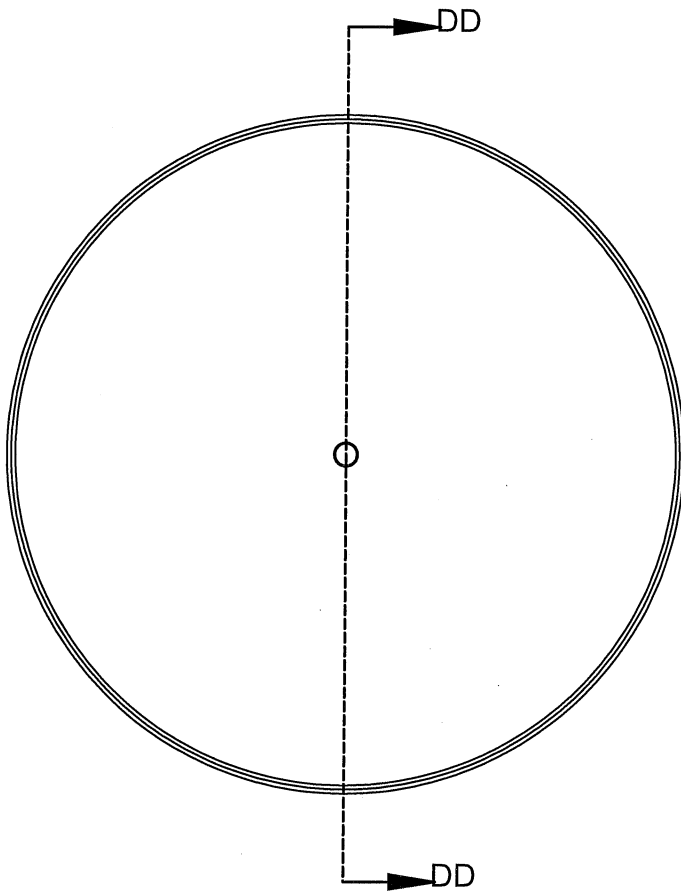
Typical Properties	Typical Value
Overall Thickness	.024 +/- 10%
Drug Master File	16574
Printed	R SFYP
Oxygen Transmission	Essentially Zero
Water Vapor Transmission	Essentially Zero

For further regulatory information, contact Mold-Rite Plastics customer service or sales department.

Notes: These are typical properties not to be construed as specifications. Mold-Rite Plastics reserves that right to include any other liner that meets that above data values and regulatory requirements.

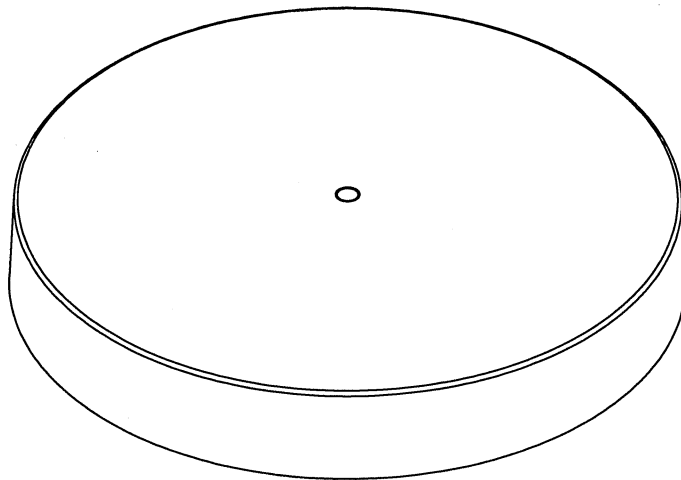
This product data sheet covers multiple liners that meet the above typical data values and regulatory requirements. All listed liners have similar physical, chemical and processing properties. Listed known liners: HS035, HS 035N, HS205, FS5-8, HSS-5.6

All results were obtained from manufacturer product data sheets (where applicable). The data are intended as a general guide only and do not necessarily represent results that may be obtained elsewhere. The use of Mold-Rite Plastics products must be guided by the users own methods for selection of proper formulation. Mold-Rite Plastics disclaims any responsibility for misuse or miss application of its products. Mold-Rite Plastics liability and customer's exclusive remedy for any claims arising out of sales of its products are expressly limited at customer option for replacement not to exceed the purchase price plus transportation charges thereon in respect to any material which damage is claimed.



SECTION DD-DD

THREAD DETAIL INFORMATION
5 THREADS PER INCH, .200 PITCH,
380° FULL DEPTH THREAD



REFERENCE	TOLERANCE	DIMENSION	UNITS
E	±.013 [0.33]	3.421 [86.89]	in [mm]
T	±.015 [0.38]	3.535 [89.79]	in [mm]
H	±.012 [0.30]	0.502 [12.75]	in [mm]
OAH	±.020 [0.51]	0.560 [14.22]	in [mm]
OD	±.015 [0.38]	3.690 [93.70]	in [mm]
PART WEIGHT	± 1.10	13.20	g

STATIC TORQUE RECOMMENDATION
40-70 in-lbs
THIS REQUIREMENT MAY VARY DEPENDING
UPON BOTTLE MATERIAL, NECK FINISH, AND
CAPPING EQUIPMENT

DRAWING TYPE: CUSTOMER

REPLACES DRAWINGS:

DIMENSIONS ENCLOSED IN ()
INDICATE REFERENCE
DIMENSIONS AND NO TOLERANCE
LIMITS ARE ESTABLISHED

TOLERANCES UNLESS OTHERWISE SPECIFIED

DIMENSION (inches)	TOLERANCE	DIMENSION (mm)	TOLERANCE
0-0.787	±0.006	0-20	±0.152
0.788-1.181	±0.008	21-30	±0.203
1.182-2.756	±0.012	31-70	±0.305
2.757-3.937	±0.016	71-100	±0.406
3.938-5.096	±0.020	101-150	±0.508
5.097-7.874	±0.024	151-200	±0.610
7.875-9.843	±0.032	201-250	±0.813

ANGULAR TOLERANCE ± 2°

PROPRIETARY AND CONFIDENTIAL

THIS DRAWING IS PROTECTED BY COPYRIGHT AND CONTAINS INFORMATION
PROPRIETARY TO MOLD-RITE, WEATHERCHEM AND STULL TECHNOLOGIES.
ANY REPRODUCTION, DISCLOSURE, OR USE OF ITS CONTENTS OR ANY PART
THEREOF IS EXPRESSLY PROHIBITED EXCEPT AS MOLD-RITE, WEATHERCHEM
AND STULL TECHNOLOGIES OTHERWISE MAY AGREE IN WRITING



THIRD ANGLE
PROJECTION

DISTRIBUTION
CODE

DRAWING NAME

89-400 CT Closure
SX (Smooth Skirt)

DRAWING NUMBER

CQA - 10163

MATERIAL

POLYPROPYLENE

MODEL NUMBER:

PM 10164 89-400 RX_SX CT

SCALE

SHEET SIZE

SHEET

REV.NP

1:1

11in*17in

1 of 3

07.AA

DRAWN BY.

BDG

5/29/2015

ENG APPR.

BDG

3/30/2017

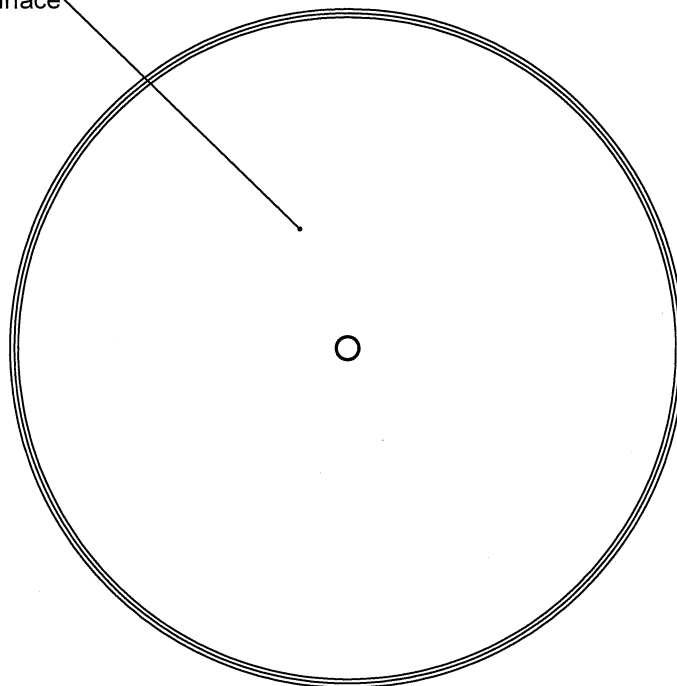
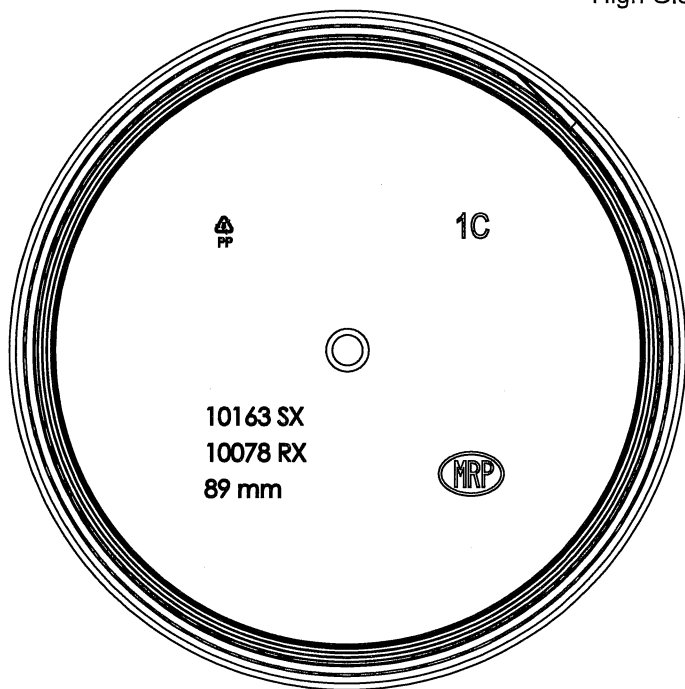
QA APPR.

DWE

4/5/2017

DATE	REV	N/P	DESCRIPTION	ENG	DRW N
01/14/15	05	AA	INITIAL RELEASE	BDG	BDG
12/03/15	05	AB	UPDATED SPECIFICATION BASED ON PLATTS VALIDATION (11/24/15)	BDG	BDG
03/02/16	05	AC	UPDATED SPECIFICATION BASED ON SOM VALIDATION (11/24/15)	BDG	BDG
03/09/16	06	AA	ADDED V-GROOVE TO BOTTLE LANDING. UPDATED PART WEIGHT	BDG	BDG
03/30/17	07	AA	ADD CHAMFER AT "T" LOCATION	BDG	BDG

High Gloss Surface



THE CLOSURE DIMENSIONS
DEPICTED ARE THOSE WHICH HAVE GENERALLY BEEN
FOUND TO BE FUNCTIONAL BASED ON INDUSTRY
EXPERIENCE BECAUSE OF VARIABILITY IN GLASS AND
PLASTIC CONTAINER FINISHES. EACH CLOSURE/FINISH
SYSTEM SHOULD BE INDIVIDUALLY EVALUATED AND
TESTED TO ENSURE IT MEETS APPLICABLE
PERFORMANCE CRITERIA. SEE QUALITY ASSURANCE
SPECIFICATIONS FOR ADDITIONAL INFORMATION.

MOLD-RITE, WEATHERCHEM AND STULL TECHNOLOGIES
RESERVES THE RIGHT TO REVISE ANY OR ALL
SPECIFICATIONS AND REQUIREMENTS.

DRAWING TYPE: CUSTOMER

REFERENCE
89010

DIMENSIONS ENCLOSED IN ()
INDICATE REFERENCE
DIMENSIONS AND NO TOLERANCE
LIMITS ARE ESTABLISHED

TOLERANCES UNLESS OTHERWISE SPECIFIED

DIMENSION (inches)	TOLERANCE	DIMENSION (mm)	TOLERANCE
0-0.787	±0.008	0-20	±0.152
0.788-1.181	±0.008	21-30	±0.203
1.182-2.756	±0.012	31-70	±0.305
2.757-3.937	±0.016	71-100	±0.406
3.938-5.096	±0.020	101-150	±0.508
5.097-7.874	±0.024	151-200	±0.610
7.875-9.843	±0.032	201-250	±0.813

ANGULAR TOLERANCE ± 2°

PROPRIETARY AND CONFIDENTIAL

THIS DRAWING IS PROTECTED BY COPYRIGHT AND CONTAINS INFORMATION
PROPRIETARY TO MOLD-RITE, WEATHERCHEM AND STULL TECHNOLOGIES.
ANY REPRODUCTION, DISCLOSURE, OR USE OF ITS CONTENTS OR ANY PART
THEREOF IS EXPRESSLY PROHIBITED EXCEPT AS MOLD-RITE, WEATHERCHEM
AND STULL TECHNOLOGIES OTHERWISE MAY AGREE IN WRITING



DISTRIBUTION
CODE
D

DRAWING NAME
**89-400 CT Closure
SX (Smooth Skirt)**

DRAWING NUMBER
CQA - 10163

MATERIAL
POLYPROPYLENE

DRAWN BY. BDG 5/29/2015

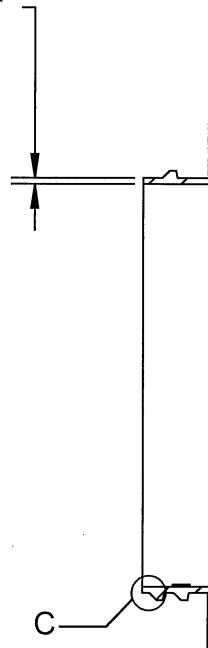
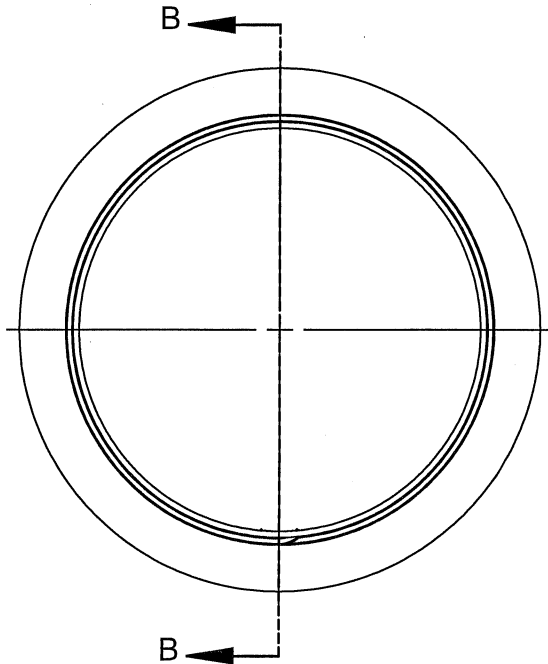
ENG APPR. BDG 3/30/2017

QA APPR. DWE 4/5/2017

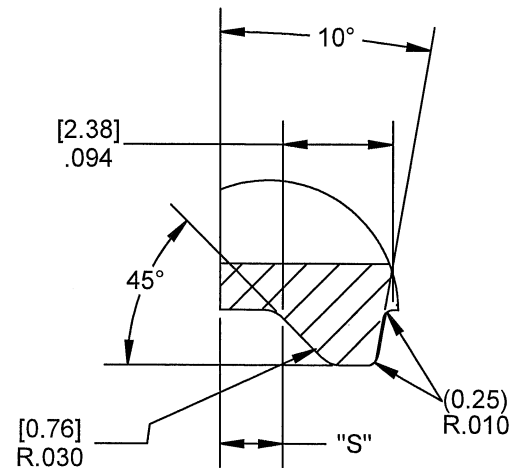
MODEL NUMBER:
PM 10164 89-400 RX_SX CT

SCALE	SHEET SIZE	SHEET	REV.NP
1:2	11in*17in	2 of 3	07.AA

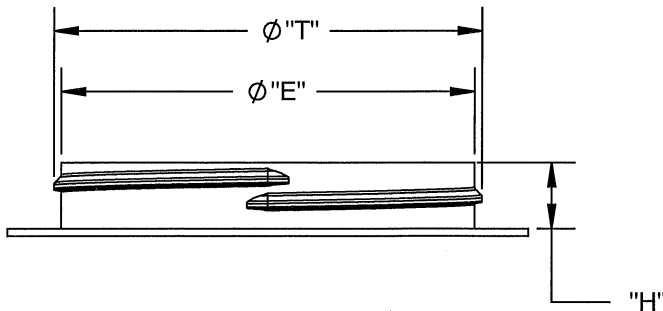
0.050[1.27] RECOMMENDED FLAT FOR
PROPER INDUCTION SEAL



SECTION B-B
SCALE 1 : 1.5



DETAIL C
SCALE 5 : 1
THREAD DETAIL



REFERENCE	TOLERANCE	UNITS	DIMENSION
E	± 0.017 [0.43]	IN [mm]	3.374 [85.70]
T	± 0.017 [0.43]	IN [mm]	3.494 [88.75]
S	± 0.015 [0.38]	IN [mm]	0.060 [1.52]
H	± 0.015 [0.38]	IN [mm]	0.535 [13.59]
TPI			5
PITCH		IN [mm]	0.200 [5.08]

NOTE: THE NOMINAL ORIENTATION ILLUSTRATED IS BASED ON NOMINAL DIMENSIONS OF BOTH THE CLOSURE AND THE RECOMMENDED NECK FINISH. FOR EXACT ORIENTATION EACH BOTTLE SHOULD BE EVALUATED ON A CASE BY CASE BASIS.

DRAWING TYPE : CUSTOMER

DIMENSIONS ENCLOSED IN ()
INDICATE REFERENCE
DIMENSIONS AND NO TOLERANCE
LIMITS ARE ESTABLISHED

TOLERANCES UNLESS OTHERWISE SPECIFIED

DIMENSION (inches)	TOLERANCE	DIMENSION (mm)	TOLERANCE
0-0.787	± 0.006	0-20	± 0.152
0.788-1.181	± 0.008	21-30	± 0.203
1.182-2.756	± 0.012	31-70	± 0.305
2.757-3.937	± 0.016	71-100	± 0.406
3.938-5.096	± 0.020	101-150	± 0.508
5.097-7.874	± 0.024	151-200	± 0.610
7.875-9.843	± 0.032	201-250	± 0.813

ANGULAR TOLERANCE $\pm 2^\circ$

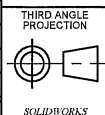
PROPRIETARY AND CONFIDENTIAL

THIS DRAWING IS PROTECTED BY COPYRIGHT AND CONTAINS INFORMATION PROPRIETARY TO MOLD-RITE, WEATHERCHEM AND STULL TECHNOLOGIES. ANY REPRODUCTION, DISCLOSURE, OR USE OF ITS CONTENTS OR ANY PART THEREOF IS EXPRESSLY PROHIBITED EXCEPT AS MOLD-RITE, WEATHERCHEM AND STULL TECHNOLOGIES OTHERWISE MAY AGREE IN WRITING

THE CLOSURE DIMENSIONS DEPICTED ARE THOSE WHICH HAVE GENERALLY BEEN FOUND TO BE FUNCTIONAL BASED ON INDUSTRY EXPERIENCE BECAUSE OF VARIABILITY IN GLASS AND PLASTIC CONTAINER FINISHES. EACH CLOSURE/FINISH SYSTEM SHOULD BE INDIVIDUALLY EVALUATED AND TESTED TO ENSURE IT MEETS APPLICABLE PERFORMANCE CRITERIA. SEE QUALITY ASSURANCE SPECIFICATIONS FOR ADDITIONAL INFORMATION.

MOLD-RITE, WEATHERCHEM AND STULL TECHNOLOGIES RESERVES THE RIGHT TO REVISE ANY OR ALL SPECIFICATIONS AND REQUIREMENTS.

MRP
MOLD-RITE PLASTICS®
Innovative • Reliable • Responsive



DISTRIBUTION
CODE
D

DRAWING NAME
89-400 CT Closure
SX (Smooth Skirt)
DRAWING NUMBER
CQA - 10163

DRAWN BY: BDG 5/29/2015
ENG APPR: BDG 3/30/2017
QA APPR: DWE 4/5/2017

MATERIAL
POLYPROPYLENE
MODEL NUMBER:
PM 10164 89-400 RX_SX CT
SCALE: 1:2
SHEET SIZE: 11in*17in
SHEET: 3 of 3
REV/N/P: 07.AA