



# FPT300F

## Homopolymer Polypropylene

- Good Mold Release, Excellent Part Finish (Low Bloom)
- Suggested Uses Include Housewares, Caps and Closures, Mugs / Cups, Thin-Walled Containers

Property	Units	Typical Value	Test Method
Nominal Melt Flow Rate (230°C/2.16kg)	g/10 min	30	ASTM D1238
Tensile Strength at Yield (2 in/min, 50 mm/min)	psi MPa	4,800 33	ASTM D638
Elongation at Yield (2 in/min, 50 mm/min)	%	10	ASTM D638
Flexural Modulus (0.05 in/min, 1.3 mm/min, 1% secant)	psi MPa	200,000 1,379	ASTM D790A
Notched Izod Impact Strength at 23°C	ft-lbs/in J/m	0.7 37	ASTM D256A
Rockwell Hardness	R	104	ASTM D785

Information contained herein is considered accurate to our best knowledge. It is offered for your consideration and investigation, and is not to be construed as a representation or warranty, expressed or implied, for which Braskem assumes legal responsibility. Our warranties are limited to those expressly stated in formal contracts or in conditions of sale on our invoices and order acceptances. Conditions and methods of use vary and are beyond the control of Braskem. Braskem, therefore, disclaims any liability incurred as a result of the use of its products in accordance with the data contained herein. No information herein shall be construed as an offer of indemnity for infringement or as a recommendation to use these products in such a manner as to infringe any patent, domestic or foreign.

For cautions and other information relating to handling of  
and exposure to this product, please see material safety  
data sheet code number C4001 published by Braskem.

550 Technology Drive  
Pittsburgh, PA 15219  
1-800-223-8871

Revision Date: Monday,  
March 23, 2009

[www.braskem.com](http://www.braskem.com)

MOLD-RITE PLASTICS LLC.  
1 Plant Street P.O. Box 160  
Plattsburgh NY 12901  
(518)561-1812  
<https://www.mrpeap.com>



## Product Data Sheet

### MRPWH01 White

#### Product Description

This specification designated by Mold-Rite Plastics covers all colorants that meet the typical value data listed below.

#### Regulatory Compliance

FDA – Title 21 CFR Section 170-199 for Food & Drug Contact  
RoHS Compliant  
CONEG/Heavy Metal Compliant  
Proposition 65 Compliant

Typical Properties	Typical Value
Density	.90
Melt Index	30
Pellets	Standard
Recommended Let Down Ratio	50:1
Carrier Resin	PP
Estimated Heat Stability	450-500 °F
Visual Evaluation	Excellent
Additives	None
DE Tolerance	< 2.00

For further regulatory information, contact Mold-Rite Plastics customer service or sales department.

Notes: These are typical properties not to be construed as specifications. Mold-Rite Plastics reserves that right to include any other colorant that meets that above data values and regulatory requirements.

This product data sheet covers multiple colorant formulations that meet the above typical data values and regulatory requirements. All listed formulas have similar physical, chemical and processing properties. Listed known formulas; Polymer Concentrates – 10536, Penn Color 60W5221

All results were obtained from manufacturer product data sheets (where applicable). The data are intended as a general guide only and do not necessarily represent results that may be obtained elsewhere. The use of Mold-Rite Plastics products must be guided by the users own methods for selection of proper formulation. Mold-Rite Plastics disclaims any responsibility for misuse or miss application of its products. Mold-Rite Plastics liability and customer's exclusive remedy for any claims arising out of sales of its products are expressly limited at customer option for replacement not to exceed the purchase price plus transportation charges thereon in respect to any material which damage is claimed.



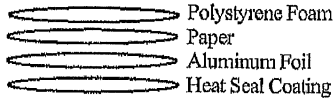
## Product Data Sheet

MRP Description:(A01)MRPLN04.020 FOAM R SFYP

### MRPLN04 – Universal Heat Seal Foam Liner

#### Product Description

This product is a 1 piece universal heat seal consisting of foam backing, paper, aluminum foil and heat seal layer.. This specification, designated by Mold-Rite Plastics, covers all liners that meet the typical value data listed below;



#### Regulatory Compliance

FDA Title 21 CFR Section 177.1210 (Closure with Sealing Gaskets for Food Containers),  
 RoHS Compliant  
 CONEG/Heavy Metal Compliant  
 Proposition 65 Compliant

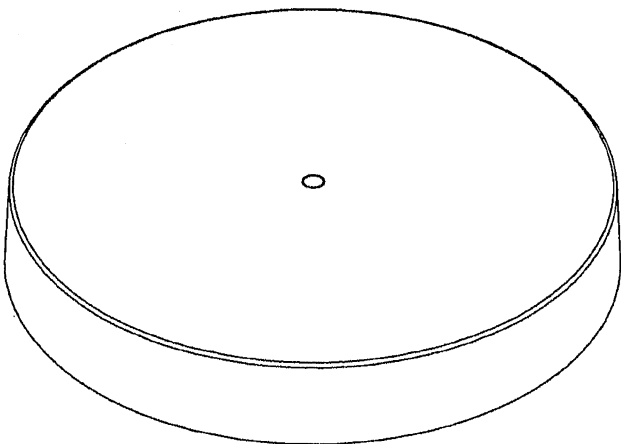
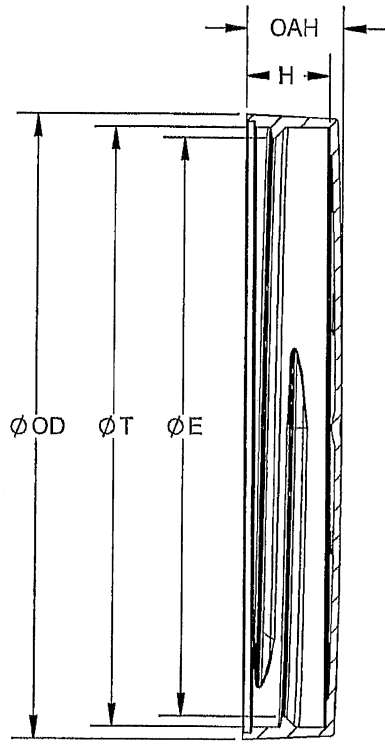
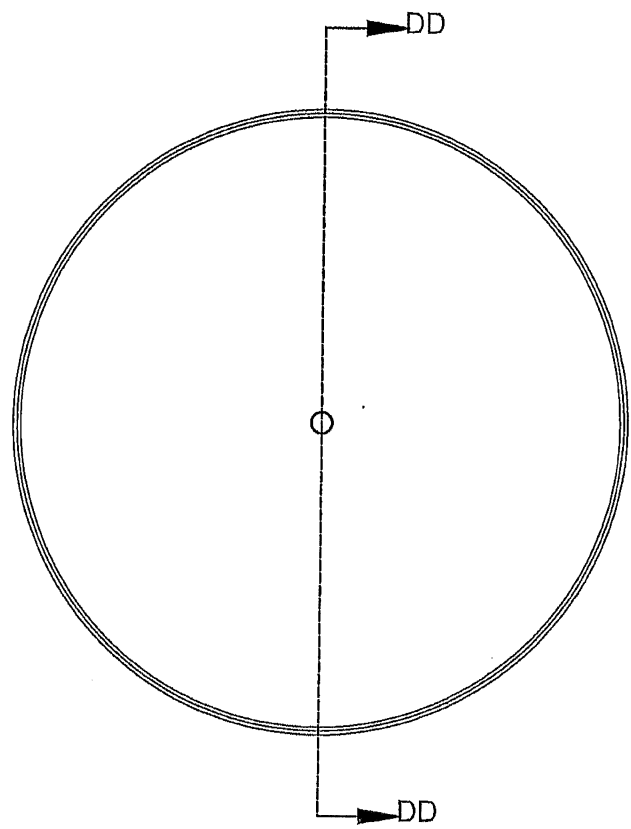
Typical Properties	Typical Value
Overall Thickness	.024 +/- 10%
Drug Master File	16574
Printed	R SFYP
Oxygen Transmission	Essentially Zero
Water Vapor Transmission	Essentially Zero

For further regulatory information, contact Mold-Rite Plastics customer service or sales department.

Notes: These are typical properties not to be construed as specifications. Mold-Rite Plastics reserves that right to include any other liner that meets that above data values and regulatory requirements.

This product data sheet covers multiple liners that meet the above typical data values and regulatory requirements. All listed liners have similar physical, chemical and processing properties. Listed known liners: HS035, HS 035N, HS205, FS5-8, HSS-5.6

All results were obtained from manufacturer product data sheets (where applicable). The data are intended as a general guide only and do not necessarily represent results that may be obtained elsewhere. The use of Mold-Rite Plastics products must be guided by the users own methods for selection of proper formulation. Mold-Rite Plastics disclaims any responsibility for misuse or miss application of its products. Mold-Rite Plastics liability and customer's exclusive remedy for any claims arising out of sales of its products are expressly limited at customer option for replacement not to exceed the purchase price plus transportation charges thereon in respect to any material which damage is claimed.



**SECTION DD-DD**

THREAD DETAIL INFORMATION  
5 THREADS PER INCH, .200 PITCH,  
380° FULL DEPTH THREAD

	TOLERANCE	UNITS	
<b>E</b>	± 0.013 [0.33]	In [mm]	3.421 [86.89]
<b>T</b>	± 0.015 [0.38]	In [mm]	3.535 [89.79]
<b>H</b>	± 0.012 [0.30]	In [mm]	0.502 [12.75]
<b>OAH</b>	± 0.020 [0.51]	In [mm]	0.560 [14.22]
<b>OD</b>	± 0.015 [0.38]	In [mm]	3.690 [93.73]
<b>Part Weight</b>	±01.10	g	13.20

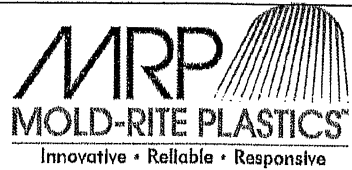
**STATIC TORQUE RECOMMENDATION**  
40-70 In-lbs  
THIS REQUIREMENT MAY VARY DEPENDING UPON BOTTLE MATERIAL, NECK FINISH, AND CAPPING EQUIPMENT

**DRAWING TYPE :** CUSTOMER  
DIMENSIONS ENCLOSED IN ( ) INDICATE REFERENCE DIMENSIONS AND NO TOLERANCE LIMITS ARE ESTABLISHED  
TOLERANCES UNLESS OTHERWISE SPECIFIED

DIMENSION (Inches)	TOLERANCE	DIMENSION (mm)	TOLERANCE
0-0.787	±0.006	0-20	±0.152
0.788-1.181	±0.008	21-30	±0.203
1.182-2.766	±0.012	31-70	±0.305
2.767-3.937	±0.016	71-100	±0.406
3.938-6.086	±0.020	101-150	±0.508
6.087-7.874	±0.024	151-200	±0.610
7.875-9.843	±0.032	201-250	±0.813

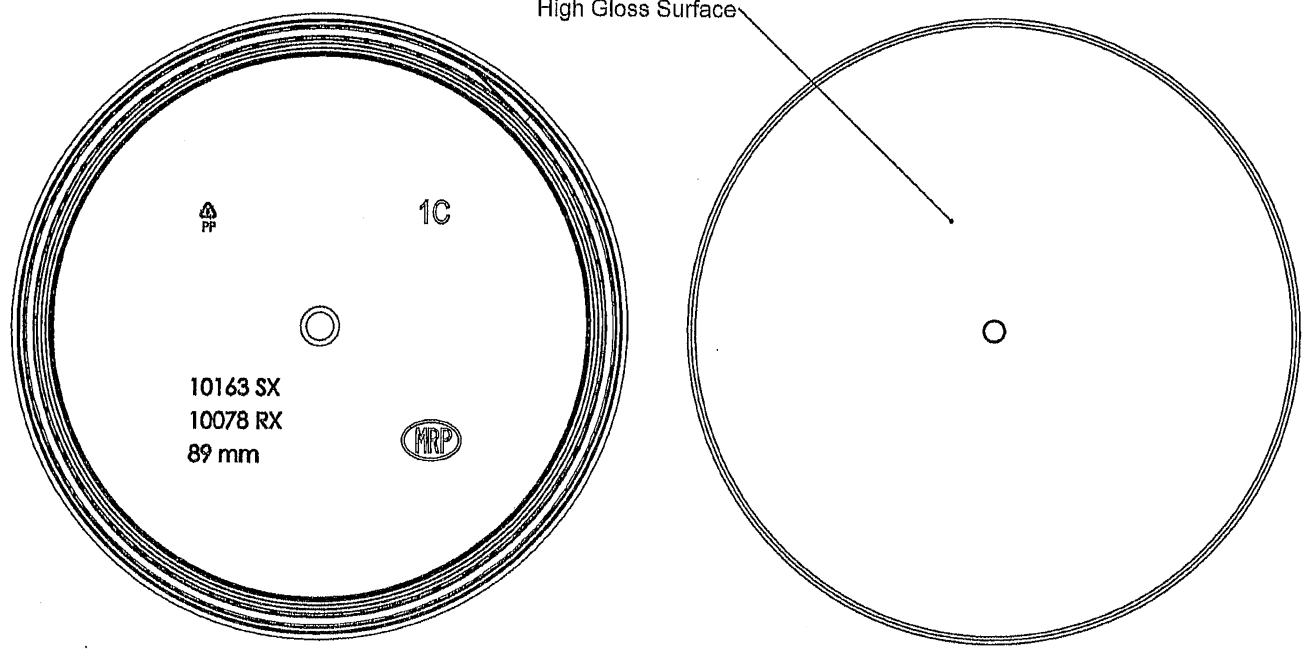
THE CLOSURE DIMENSIONS DEPICTED ARE THOSE WHICH HAVE GENERALLY BEEN FOUND TO BE FUNCTIONAL BASED ON INDUSTRY EXPERIENCE BECAUSE OF VARIABILITY IN GLASS AND PLASTIC CONTAINER FINISHES. EACH CLOSURE/FINISH SYSTEM SHOULD BE INDIVIDUALLY EVALUATED AND TESTED TO ENSURE IT MEETS APPLICABLE PERFORMANCE CRITERIA. SEE QUALITY ASSURANCE SPECIFICATIONS FOR ADDITIONAL INFORMATION.  
**MOLD-RITE, WEATHERCHEM AND STULL TECHNOLOGIES RESERVES THE RIGHT TO REVISE ANY OR ALL SPECIFICATIONS AND REQUIREMENTS.**

**ANGULAR TOLERANCE ± 2°**  
**PROPRIETARY AND CONFIDENTIAL**  
THIS DRAWING IS PROTECTED BY COPYRIGHT AND CONTAINS INFORMATION PROPRIETARY TO MOLD-RITE, WEATHERCHEM AND STULL TECHNOLOGIES. ANY REPRODUCTION, DISCLOSURE, OR USE OF ITS CONTENTS OR ANY PART THEREOF IS EXPRESSLY PROHIBITED EXCEPT AS MOLD-RITE, WEATHERCHEM AND STULL TECHNOLOGIES OTHERWISE MAY AGREE IN WRITING



THIRD ANGLE PROJECTION 	DISTRIBUTION CODE <b>D</b>	DRAWING NAME <b>89mm "SX" Closure</b>
DRAWN BY: BDG	06/29/16	DRAWING NUMBER <b>CQA 10163</b>
		MATERIAL <b>POLYPROPYLENE</b>
		MODEL NUMBER: 10078 69mm CT
SCALE 2:3	SHEET SIZE 8½ x 11	SHEET 1 of 3
	REV 02	N/P AA

REVISION HISTORY				
REV	N/P	DATE	REVISION	DE
01	AA	10/14/15	INITIAL RELEASE	BDG
01	AB	12/03/15	UPDATED SPECIFICATION BASED ON PLAT VALIDATION (11/24/15)	BDG
01	AC	03/02/16	UPDATED SPECIFICATION BASED ON SOM VALIDATION (02/29/16)	BDG
02	AA	03/09/16	ADDED V-GROOVE TO BOTTLE LANDING. UPDATED PART WEIGHT	BDG



THE CLOSURE DIMENSIONS DEPICTED ARE THOSE WHICH HAVE GENERALLY BEEN FOUND TO BE FUNCTIONAL BASED ON INDUSTRY EXPERIENCE BECAUSE OF VARIABILITY IN GLASS AND PLASTIC CONTAINER FINISHES, EACH CLOSURE/FINISH SYSTEM SHOULD BE INDIVIDUALLY EVALUATED AND TESTED TO ENSURE IT MEETS APPLICABLE PERFORMANCE CRITERIA. SEE QUALITY ASSURANCE SPECIFICATIONS FOR ADDITIONAL INFORMATION.

MOLD-RITE, WEATHERCHEM AND STULL TECHNOLOGIES RESERVES THE RIGHT TO REVISE ANY OR ALL SPECIFICATIONS AND REQUIREMENTS.

DRAWING TYPE : CUSTOMER			
DIMENSIONS ENCLOSED IN ( ) INDICATE REFERENCE DIMENSIONS AND NO TOLERANCE LIMITS ARE ESTABLISHED			
TOLERANCES UNLESS OTHERWISE SPECIFIED			
DIMENSION (Inches)	TOLERANCE	DIMENSION (mm)	TOLERANCE
0-0.787	±0.006	0-20	±0.152
0.788-1.181	±0.008	21-30	±0.203
1.182-2.758	±0.012	31-70	±0.305
2.757-3.937	±0.016	71-100	±0.406
3.938-5.096	±0.020	101-150	±0.508
5.097-7.874	±0.024	151-200	±0.610
7.876-9.843	±0.032	201-250	±0.813
ANGULAR TOLERANCE ± 2°			

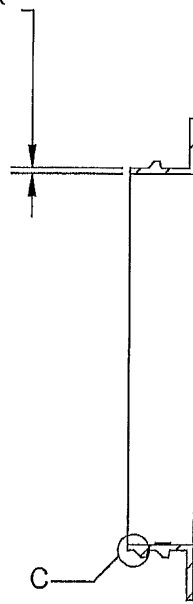
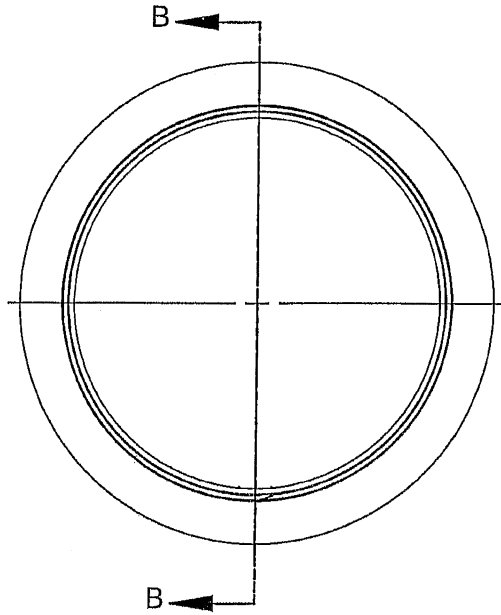


THIRD ANGLE PROJECTION	DISTRIBUTION CODE	DRAWING NAME
	D	89mm "SX" Closure
DRAWN BY: REFER TO PAGE 1		DRAWING NUMBER
QA APPR: REFER TO PAGE 1		CQA 10163
CUSTOMER APPR: REFER TO PAGE 1		MATERIAL
		POLYPROPYLENE
SCALE	SHEET SIZE	SHEET
3:2	8 1/2 x 11	2 of 3
REV	N/P	
02	AA	

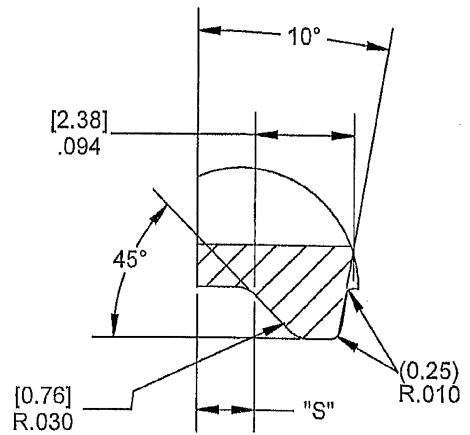
**PROPRIETARY AND CONFIDENTIAL**

THIS DRAWING IS PROTECTED BY COPYRIGHT AND CONTAINS INFORMATION PROPRIETARY TO MOLD-RITE, WEATHERCHEM AND STULL TECHNOLOGIES. ANY REPRODUCTION, DISCLOSURE, OR USE OF ITS CONTENTS OR ANY PART THEREOF IS EXPRESSLY PROHIBITED EXCEPT AS MOLD-RITE, WEATHERCHEM AND STULL TECHNOLOGIES OTHERWISE MAY AGREE IN WRITING

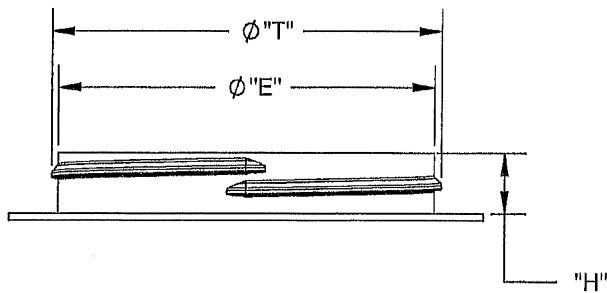
0.050[1.27] RECOMMENDED FLAT FOR PROPER INDUCTION SEAL



SECTION B-B  
SCALE 1 : 1.5



DETAIL C  
SCALE 5 : 1  
THREAD DETAIL



	TOLERANCE	UNITS	
E	$\pm 0.017$ [0.43]	In [mm]	3.374 [85.70]
T	$\pm 0.017$ [0.48]	In [mm]	3.494 [88.75]
H	$\pm 0.015$ [0.38]	In [mm]	0.535 [13.59]
S	$\pm 0.015$ [0.38]	In [mm]	0.060 [1.52]
TPI		In [mm]	0.200 [5.08]
PITCH			5

THE CLOSURE DIMENSIONS DEPICTED ARE THOSE WHICH HAVE GENERALLY BEEN FOUND TO BE FUNCTIONAL BASED ON INDUSTRY EXPERIENCE BECAUSE OF VARIABILITY IN GLASS AND PLASTIC CONTAINER FINISHES. EACH CLOSURE/FINISH SYSTEM SHOULD BE INDIVIDUALLY EVALUATED AND TESTED TO ENSURE IT MEETS APPLICABLE PERFORMANCE CRITERIA. SEE QUALITY ASSURANCE SPECIFICATIONS FOR ADDITIONAL INFORMATION.

MOLD-RITE, WEATHERCHEM AND STULL TECHNOLOGIES RESERVES THE RIGHT TO REVISE ANY OR ALL SPECIFICATIONS AND REQUIREMENTS.

DRAWING TYPE : CUSTOMER

DIMENSIONS ENCLOSED IN ( ) INDICATE REFERENCE DIMENSIONS AND NO TOLERANCE LIMITS ARE ESTABLISHED

TOLERANCES UNLESS OTHERWISE SPECIFIED

DIMENSION (inches)	TOLERANCE	DIMENSION (mm)	TOLERANCE
0-0.787	$\pm 0.006$	0-20	$\pm 0.152$
0.788-1.181	$\pm 0.008$	21-30	$\pm 0.203$
1.182-2.766	$\pm 0.012$	31-70	$\pm 0.305$
2.767-3.937	$\pm 0.016$	71-100	$\pm 0.406$
3.938-5.098	$\pm 0.020$	101-150	$\pm 0.508$
5.097-7.874	$\pm 0.024$	151-200	$\pm 0.610$
7.875-9.843	$\pm 0.032$	201-250	$\pm 0.813$

ANGULAR TOLERANCE  $\pm 2^\circ$

PROPRIETARY AND CONFIDENTIAL

THIS DRAWING IS PROTECTED BY COPYRIGHT AND CONTAINS INFORMATION PROPRIETARY TO MOLD-RITE, WEATHERCHEM AND STULL TECHNOLOGIES. ANY REPRODUCTION, DISCLOSURE, OR USE OF ITS CONTENTS OR ANY PART THEREOF IS EXPRESSLY PROHIBITED EXCEPT AS MOLD-RITE, WEATHERCHEM AND STULL TECHNOLOGIES OTHERWISE MAY AGREE IN WRITING



DISTRIBUTION CODE  
**D**

DRAWING NAME

89mm RNF

DRAWING NUMBER

CQA 10163

MATERIAL

DRAWN BY: REFER TO PAGE 1

QA APPR: REFER TO PAGE 1

CUSTOMER APPR: REFER TO PAGE 1

SCALE	SHEET SIZE	SHEET	REV	NIP
3:2	8 1/2 x 11	3 of 3	01	AC