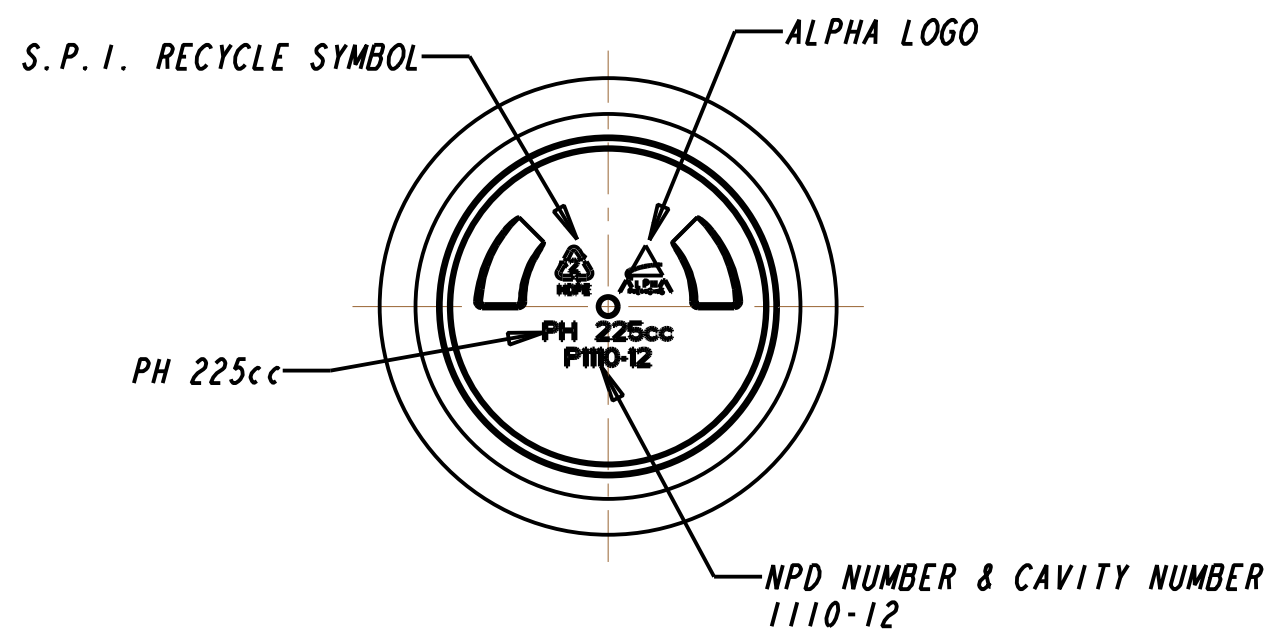


DETAIL A
M45-400 NECK FINISH
6 T.P.I., 1 THREAD TURN
.250 MIN. "I" DEPTH
SCALE 2.000



NOTE:
MINIMUM WALL THICKNESS MEASURED AT LABEL AREA

NPD # 1110		DISCLAIMER: Alpha Packaging assumes no responsibility for form, fit and function of closures, accessories, and/or shelf life and compatibility of intended contents with this bottle.			
Alpha Packaging, Inc.	Color	Min. Thk	Weight	Overflow Volume	Revisions
All measurements are in inches, [mm]		.020	22.5 ±2.0g	248.5 ±7.0cc	A ADDED PH 225cc, 06-FEB-13, JAZ
					B ADDED .015" MIN. WALL & REMOVED PRELIMINARY STAMP
					C MINIMUM WALL WAS .015 AND ADDED MINIMUM WALL NOTE
Tolerance: Where not shown	NECK FINISH	M45-400			18-JULY-13, JAZ
Decimal ±0.05 [1.27] Angular ±1	MATERIAL:	HDPE			23-SEPT-13, JAZ
					Scale: 1.000
					Drawn By: J. ZITZMAN
					Date: Jan-17-13
					225cc PHARMA LINE-HDPE M45-400, CT, [7.6oz]
					DwgRev: 225PH45 C
					Approved By:
					Drawing NO: H0225PKRD045A
					SJ