

Petrothene

LR734045

High Density Polyethylene

Blow Molding Grade

Melt Index: 0.38 Density: 0.953



Applications

Petrothene LR734045 is a high density polyethylene resin that exhibits good stiffness and environmental stress crack resistance. This product contains stearate as a core rod release for the injection-blow molding process. Typical applications include bottles for household chemicals, food products, and personal care products

Regulatory Status

LR734045 meets the requirements of the Food and Drug Administration regulation 21 CFR 177.1520. This regulation allows the use of this olefin polymer in "...articles or components of articles intended for use in contact with food..." Specific limitations or conditions of use may apply. Contact your Equistar sales representative for more information about the use of specific products for specific applications.

Processing Techniques

Specific recommendations for processing LR734045 can only be made when the processing conditions, equipment and end use are known. For further suggestions, please contact your Equistar sales representative.

Typical Properties

Property	Nominal Value	Units	ASTM Test Method
Melt Index	0.38	g/10 min	D 1238
Density	0.953	g/cc	D 1505
Tensile Strength @ Yield	4,000	psi	D 638
Elongation @ Break	>500	%	D 638
Flexural Modulus	176,000	psi	D 790
Tensile Impact	131	ft-lb/in.	D 1822
Low Temperature Brittleness, F ₅₀	<-76	°C	D 746
Heat Deflection Temperature @ 66 psi	75	°C	D 648
Vicat Softening Point	127	°C	D 1525
Hardness, Shore D	67		D 2240
Environmental Stress Crack Resistance, F ₅₀	25	hrs	D 1693 ¹
	>500	hrs	D 2561

¹ 100% Igepal® CO-630, 50°C

® Igepal is a registered trademark of Rhône-Poulenc Co., Inc.

LyondellBasell markets this product through the following entities:

Equistar Chemicals, LP
Basell Sales & Marketing Company B.V.
Basell Asia Pacific Limited
Basell International Trading FZE
LyondellBasell Australia Pty Ltd

Petrothene is a trademark owned or used by LyondellBasell group companies. *Petrothene* is registered in the U.S. Patent and Trademark Office.

Before using a product sold by one of the LyondellBasell family of companies, users should make their own independent determination that the product is suitable for the intended use and can be used safely and legally. SELLER MAKES NO WARRANTY; EXPRESS OR IMPLIED (INCLUDING ANY WARRANTY OF MERCHANTABILITY OR FITNESS FOR A PARTICULAR PURPOSE) OTHER THAN AS SEPARATELY AGREED BETWEEN THE PARTIES IN WRITING. This product(s) may not be used in the manufacture of any US FDA Class III Medical Device or Health Canada Class IV Medical Device and may not be used in the manufacture of any US FDA Class II Medical Device or Health Canada Class II or Class III Medical Device without the prior written approval by Seller of each specific product or application.

Users should review the applicable Material Safety Data Sheet before handling the product.

Equistar Chemicals, LP
1221 McKinney, Suite 700
P. O. Box 2583
Houston, Texas 77252-2583
(888) 777-0232
www.lyondellbasell.com



Plastics Color Corporation

www.plasticscolor.com

NC 1175C WHITE

BASE RESIN: LDPE/LLDPE COMBINATION

MELT INDEX: 4 - 12gms/10mins.....ASTM-D-1238 (E)

DENSITY: .916 - .926gms/cm³.....ASTM D-1505

CONCENTRATE:

MELT INDEX: 4 - 8gms/10mins.....ASTM D 1238 (E)

BULK DENSITY: 45 - 51lbs/cu.ft.....ASTM D-1895-67 (B)

PERCENT LOADING: 51.5% ± 2% (Formulated)

U.V. STABILIZER: None Added

MOISTURE ANALYSIS: .5% Maximum.....Elec. Moisture Analyzer

F.D.A STATUS: ACCEPTABLE FOR FOOD CONTACT APPLICATIONS

PELLET SPECIFICATION: 1/8 Strand or Underwater Cut Pellet

PROCESSING: This material is considered to be thermally stable in the normal and customary processing range of 350° - 450° F. Extended polymer and concentrate residence time in the process equipment may require that process temperature profiles be reviewed and/or adjusted to insure a proper and suitable product.

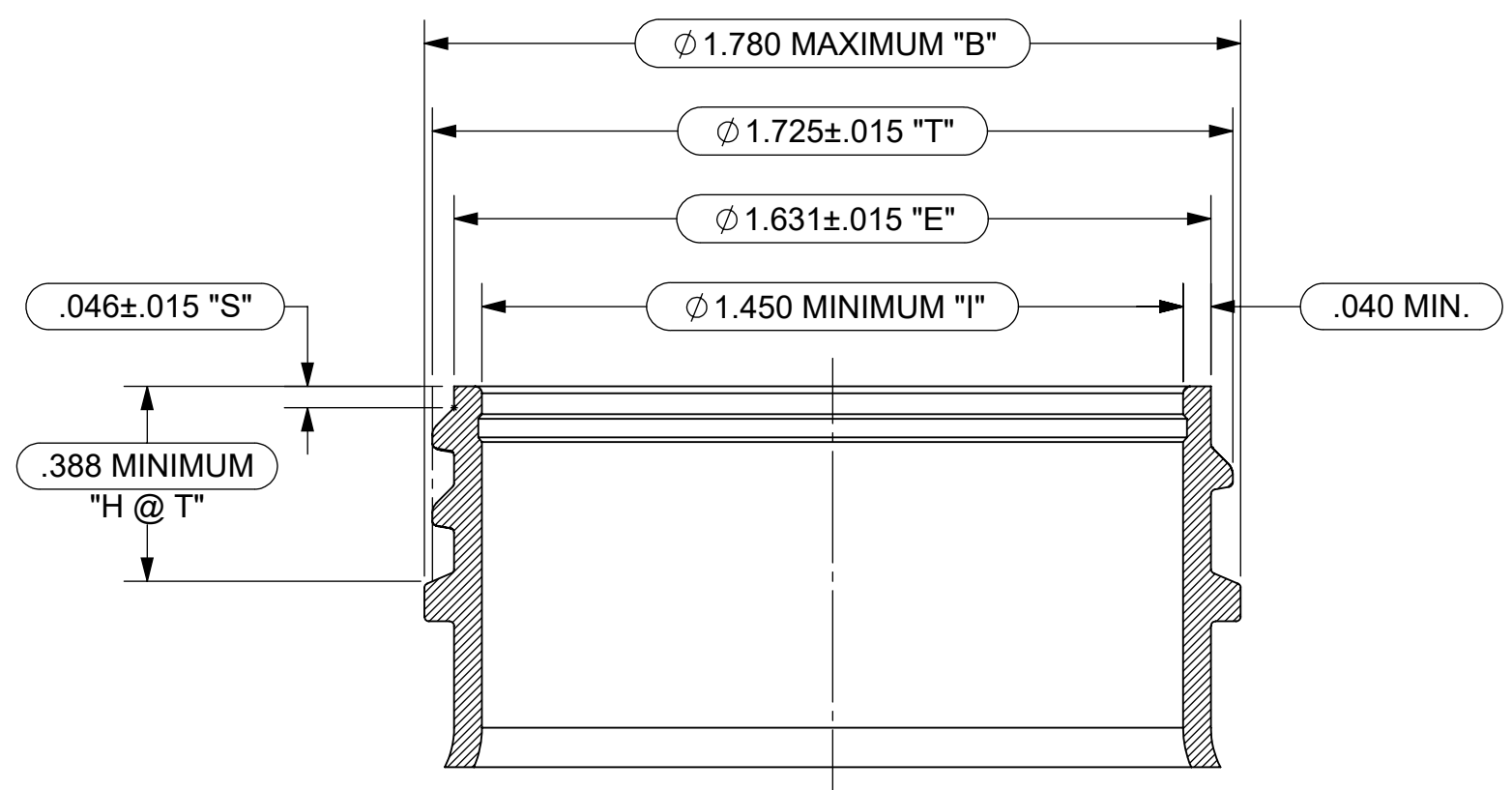
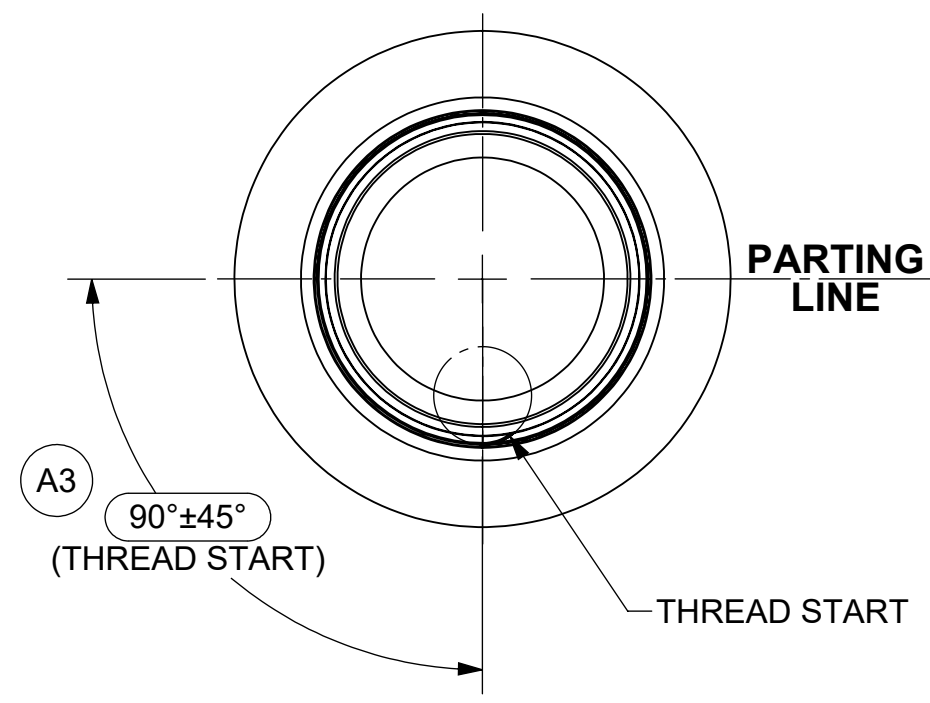
Date: January 29, 2014

PLASTICS COLOR CORPORATION OF NORTH CAROLINA

1134 Highway 49 South • Asheboro, NC 27205 • 336-629-9184 • 800-247-7428 • Fax: 336-629-8234

PRODUCTION RELEASE

LET	REVISION DESCRIPTION	BY	EWR/ECN #	DATE
A	1)DRAWING #D06-048 REDRAWN TO CURRENT STANDARDS 2)ADDED NECK FINISH DETAIL NOTES 3)ADDED THREAD START LOCATION	D.A.	#ROT170212	04/27/2017

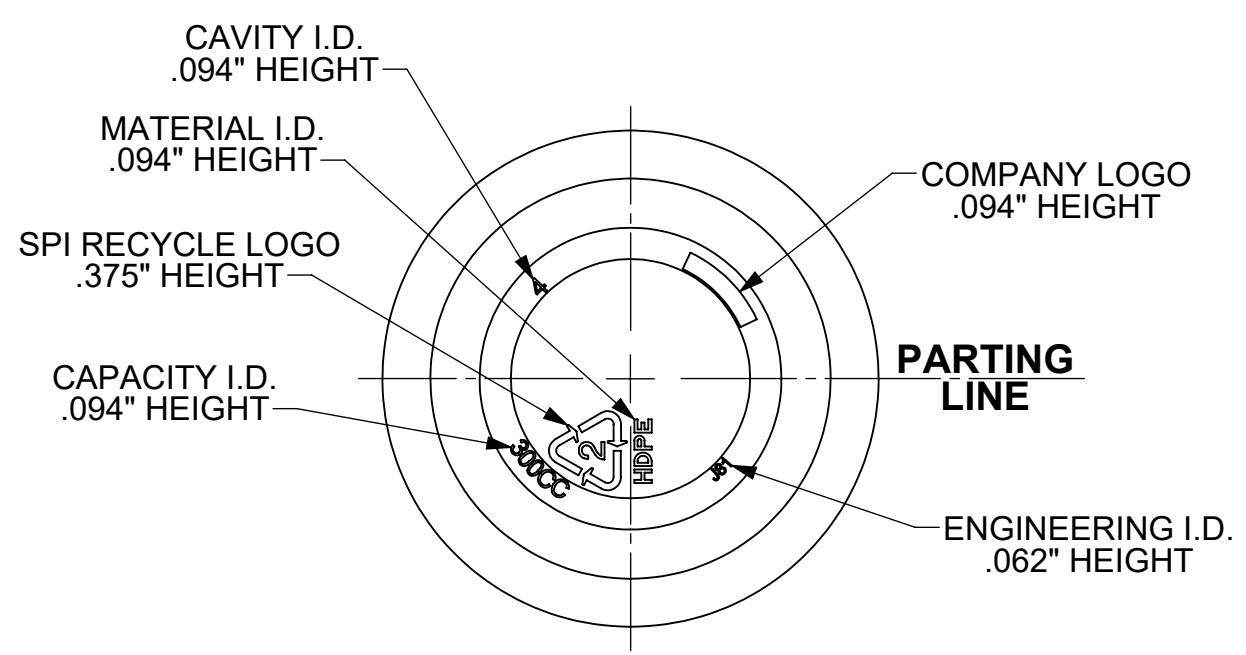
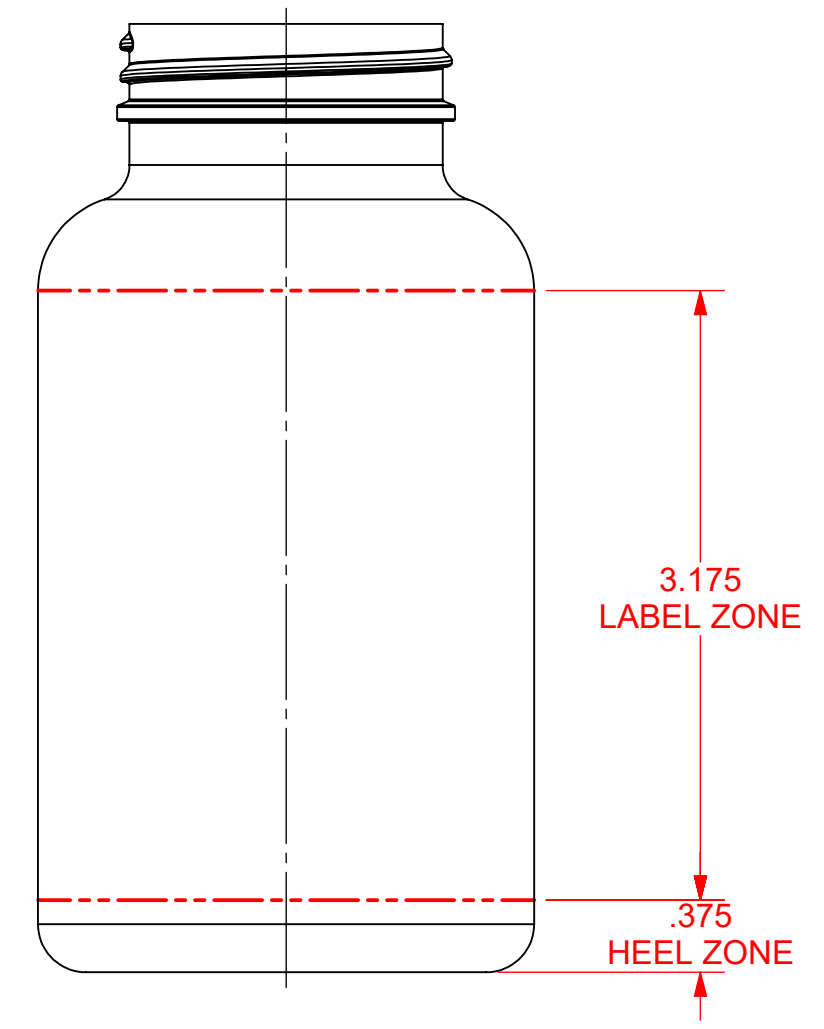
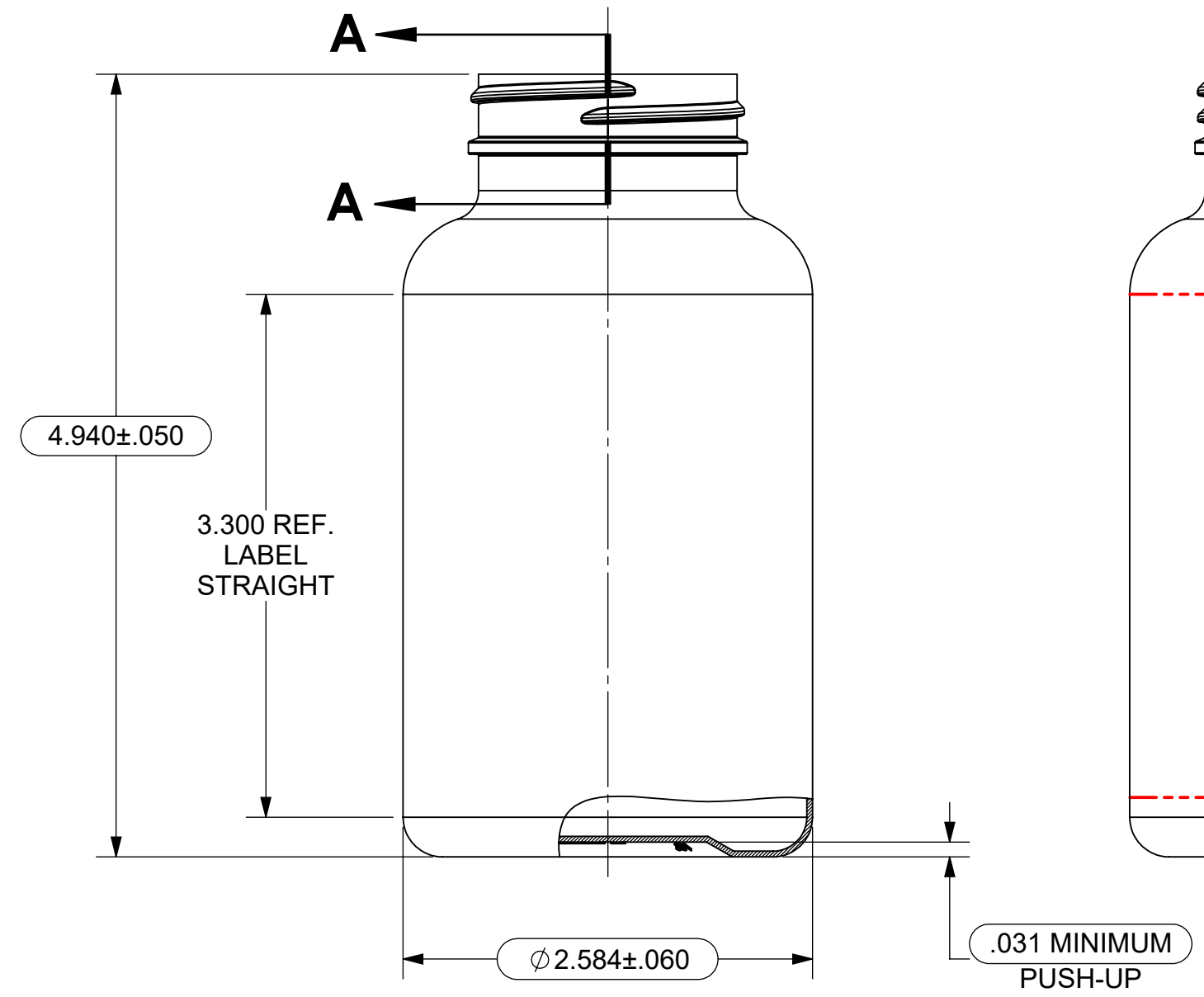


**SECTION A-A
SCALE 2.5 : 1
NECK FINISH DETAILS**

M45-SP400 NECK FINISH
6 T.P.I. = .1667" PITCH
THREAD CUTTER = Ø .500"
MINIMUM TURNS OF THREAD AT FULL DEPTH = 1.0
(THREAD TURNS COULD VARY- FROM 1.00 TURN TO 1.25 TURNS.)

ALL NECK FINISH DIAMETER DIMENSIONS ARE THE AVERAGE OF THE TWO MEASUREMENTS TAKEN ACROSS THE MAJOR AND MINOR AXIS.

PART DATA	
MATERIAL	HDPE / PP
ESTIMATED WEIGHT	26.3gr ±2.0gr
MINIMUM WALL THICKNESS- PANEL ZONE	.020"
MINIMUM WALL THICKNESS-HEEL ZONE	.012"
MAXIMUM WALL VARIATION	.016"
OVERFLOW CAPACITY	341.8cc ±9.0cc 11.56fl.oz. ±.30fl.oz.
NECK FINISH	M45-SP400 (WIDE BEAD)
OVALITY LIMITS (NECK FINISH)	.036"
MAXIMUM TAPER	.020"
MAXIMUM CONCAVITY	.012"
MAXIMUM OUT OF ROUND	.060"
MAXIMUM PERPENDICULARITY	.020"
MINIMUM DROP IMPACT	4.0 FEET



MOLD #J81

REFERENCES:
#825198, #D96-16

THIS DRAWING SUPERSEDES #D06-048-Rev-

(.XXX) ARE REFERENCE DIMENSIONS		(.XXX) ARE INSPECTION DIMENSIONS	
THIS DRAWING IS NOT A CONTROLLED DOCUMENT IF PRINTED OR COPIED FROM THE APPROVED LOCATION			
CONFIDENTIAL			
 101 OAKLEY STREET EVANSVILLE, INDIANA 47706 TEL. (812) 424-2904		THIS UNPUBLISHED WORK IS THE PROPERTY OF BERRY GLOBAL INC. AND IS PROTECTED BY TRADE SECRET, COPYRIGHT AND OTHER INTELLECTUAL PROPERTY LAWS AND MAY ALSO BE SUBJECT TO A SPECIFIC OR GENERAL CONFIDENTIALITY AGREEMENT. IT IS NOT TO BE VIEWED BY UNAUTHORIZED PERSONS OR DUPLICATED IN ANY MEDIUM FOR PURPOSES OTHER THAN THOSE FOR WHICH IT IS SPECIFICALLY FURNISHED.	
JDE TOOL NUMBER: B45PS300H		DRAWING TYPE: CUSTOMER	
DESCRIPTION: 300cc S Line Packer Container			
DRAWING NO: CP-170310-PRT01		PROJECT NUMBER: 1700255	
LAST MODIFIED BY AND DATE: ahollinger - 6/29/2018 3:52:05 PM		CREATED BY: Don Ankney	
CREATION DATE: 04/27/17		DRAWING REVISION: SHEET A 1 of 1	
SCALE: 1:1		SHEET SIZE: C	