



# ZAO «Alco-Naphtha»

Baltiyskoye Shosse. 123, Kaliningrad, 236013, Russia  
phone: +7(4012)563-692, fax: +7(4012) 563-711  
e-mail: office@ekopet.ru, site: www.ekopet.ru

## Polyethylenetererphthalate (PET)

### EKÖPET 80

Index name	Units	Specification	Test methods (according technical conditions TY 2226-001-13649021-2011)
Intrinsic viscosity	dl/g	0,80 ± 0,02	IQ-10682 Ph/DCB (50:50) Recalculation Ph/TCeT (60:40)
Melting point	°C	246 ± 2	IQ-10704 (DSC)
Acetaldehyde content	ppm	1,0 Max	IQ-10698
Color number (CIE-LAB) L* b*		82,0 Min - 1 ± 2	IQ-10688
Moisture content	weight %	0,2 Max	IQ-10683
Dust content	ppm	100 Max	IQ-10702
Pellets weight	g/100 pcs	1,6 ± 0,2	IQ-10692

Remark: EKÖPET 80 BB – material is packed in **big-bag**, weight net 1050±5 kg.

Upon agreement with the Buyer EKÖPET 80 to be supplied with other type of packaging to ensure the safety of the quality and quantity of PET resin during transportation and storage.



HEAD OFFICE: :GROUND FLOOR, G&T TOWER #10, BEAUMONT ROAD, CIVIL LINES-10, KARACHI, PAKISTAN 75530.  
 HEAD OFFICE: TEL NO. (+9221)35659585-7. FAX. (+9221)35659516.  
 FACTORY: 117-83, RAILWAY SIDING OFF. EXPORT PROCESSING ZONE ROAD,  
 NEAR WHEAT GODOWN, LANDHI, KARACHI – 75160, PAKISTAN.  
 FACTORY: TEL. #: (021) 5017484 TO 85 FAX: (021) 5017750  
 E-MAIL: [NOVAFAC@NOVATEX.COM](mailto:NOVAFAC@NOVATEX.COM) WEBSITE:[WWW.GATRONOVA.COM](http://WWW.GATRONOVA.COM)

# GATRONOVA PET

## Standard Specifications of Gatronova PET resin A-80 Polyester Bottle Grade Chips

Description	Unit	Test Method	Test Equipment	Novatex Specifications
Intrinsic viscosity (IV)	[dl/g]	PV-07040.5 <sup>a</sup>	Capillary Viscometer	0.80 ± 0.02 <sup>a</sup>
DEG Content	%	PV-09040	Gas Chromatograph	≤ 1.5
Carboxylic End Groups	m.mol/kg	PV-07013.4	Titranoplus	35 max.
Acetaldehyde (AA)	ppm	Cobarr 201/A <sup>1</sup>	Gas Chromatograph	< 1.0
Moisture Content	%	PV-07109.5	MEECO	0.4 Max.
Melting Point (DSC)	[°C]	PV-07089.2	Mettler DSC	247 ± 2
Color No. Hunter Lab	LH	PV-07136.1	BYK Gardener	≥ 83
Color No. Hunter Lab	bH	PV-07136.1	BYK Gardener	0.0 ± 0.95
Number of Chips/gram	No.	Manual	-	61 ± 3
Crystallinity	%	ASTM D 1505	Techne Gradient Column	≥ 50

Specifications as per Zimmer test methods. Details of method can be provided upon request.

<sup>1</sup> As per Sinco method

<sup>a</sup> IV is done according to PV-07040.5- Solvent is Phenol/Dicholobenzene using ubbelohde type 1(c) capillary viscometer at 25°C.

≤ read as less than or equal to

≥ read as greater than or equal to

The information and the data contained here is believed to be correct and there are FDA/EEC compliance certifications and other major food grade approvals available and can be provided upon request.

### Please direct all you inquiries to:

#### Gatronova Marketing and Exports Department

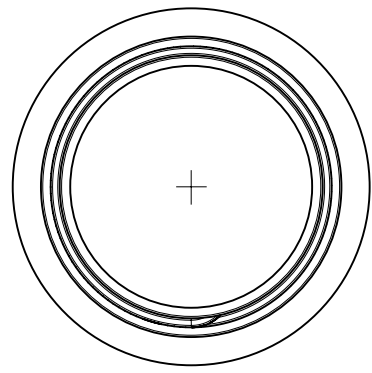
GROUND FLOOR, G&T TOWER #10, BEAUMONT ROAD, CIVIL LINES-10, KARACHI, PAKISTAN 75530.

Email: [marketing@gatronova.com](mailto:marketing@gatronova.com)

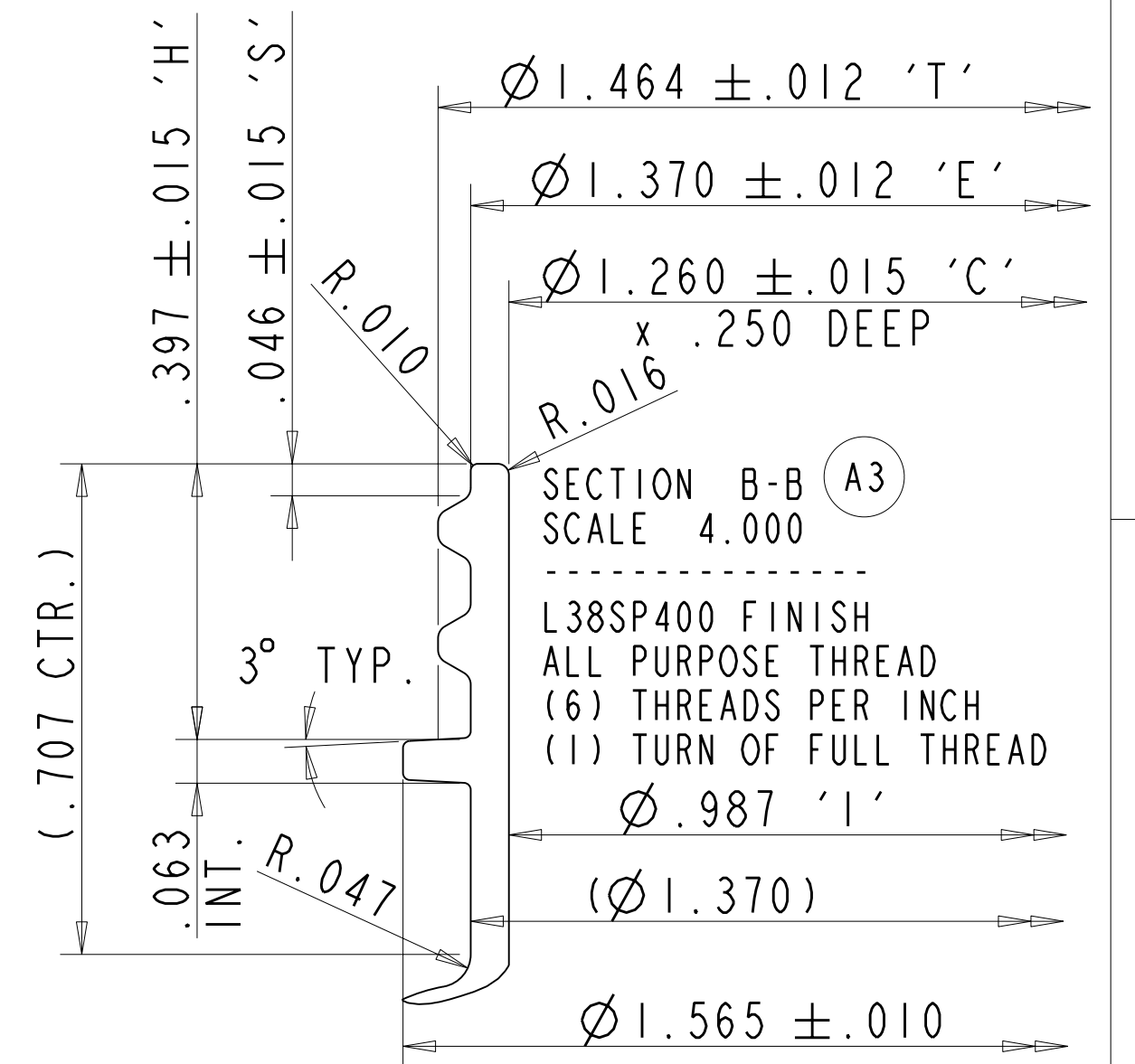
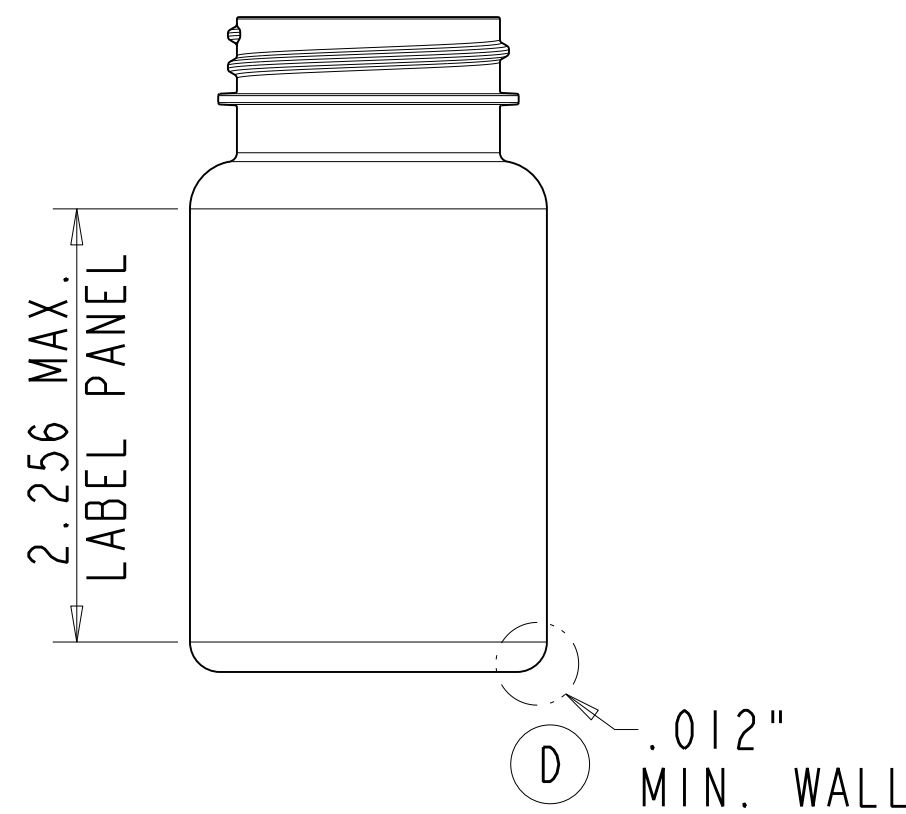
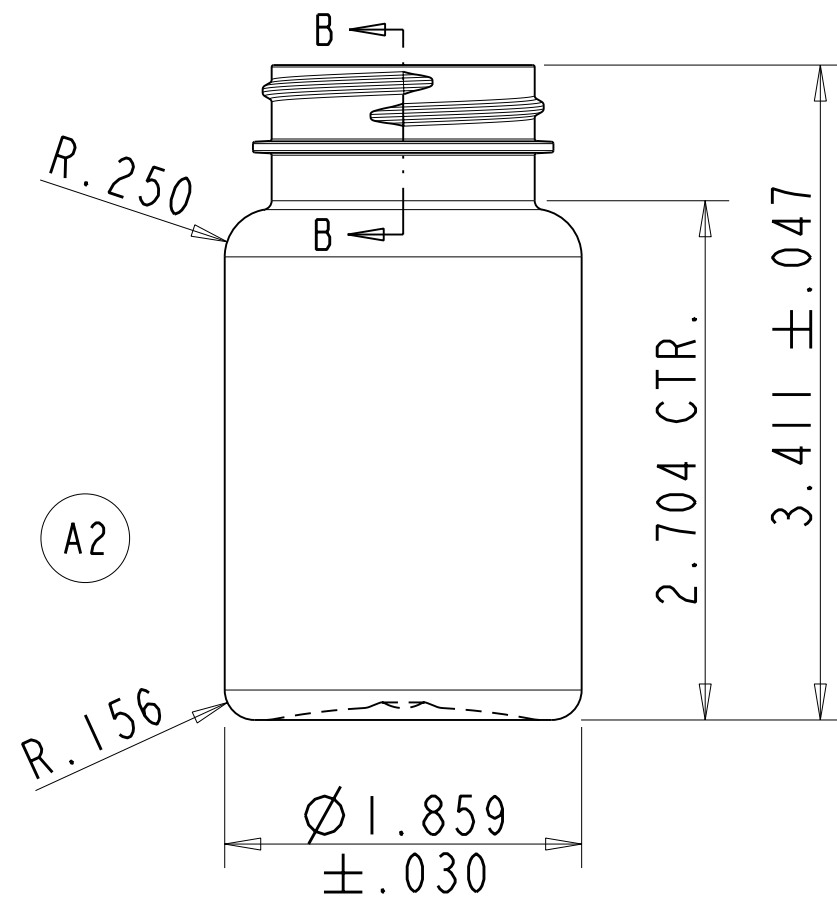
Phone: (+9221)35659585-7.

Fax: (+9221)35659516.

REV	DATE	BY	REVISION
	091710	RRJ	THIS DRAWING HAS BEEN REDRAWN FROM GMP-1026-C-PD.
A	101710	RRJ	A1 REMOVED NOTES 5 & 6, A2 REMOVED DIM'S 2.412 & 1.284, A3 REVISED THREAD DETAIL.
B	092415	ES	A1 REDRAWN FROM 3196-0203-A.
C	050917	ES	UPDATED PUSHUP ENGRAVING.
D	081518	ES	ADDED MIN. WALL LOCATION & NOTE 5.
E	112718	ES	WEIGHT WAS 14 ±1 GRAMS.

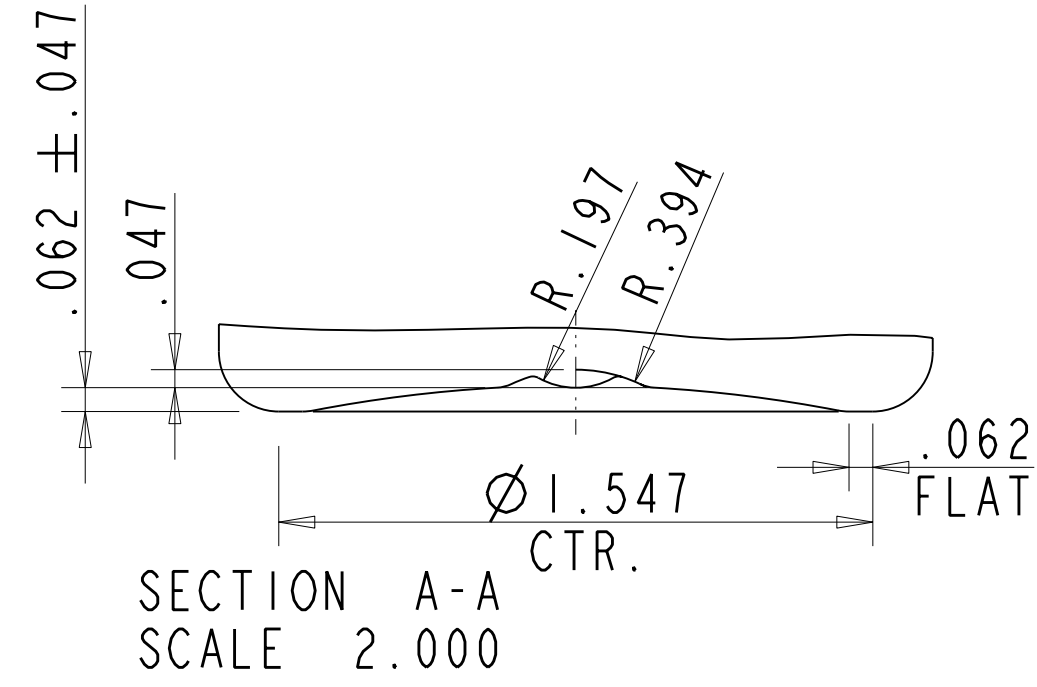
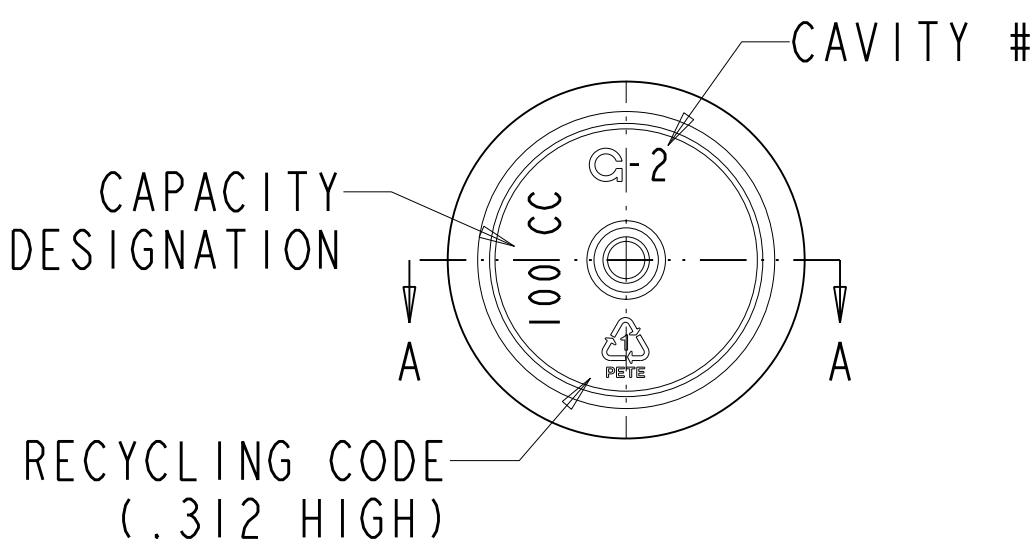


SCALE 0.750



SECTION B-B (A3)  
SCALE 4.000

L38SP400 FINISH  
ALL PURPOSE THREAD  
(6) THREADS PER INCH  
(1) TURN OF FULL THREAD



SECTION A-A  
SCALE 2.000

- (A1) NOTES:
- 1 - MOLD NO. NB-400118
  - 2 - MAX. VARIATION IN AVERAGE DIAMETER BETWEEN TOP AND BOTTOM NOT TO EXCEED .010
  - 3 - ALL DIMENSIONS APPLY AS MOLDED
  - 4 - MAXIMUM OUT OF ROUNDNESS ON BODY OF CONTAINER NOT TO EXCEED .015.
  - 5 - .012" MIN. WALL THICKNESS.

RESTRICTED, CONFIDENTIAL DOCUMENT

THIS DOCUMENT AND THE INFORMATION THEREON IS THE SOLE AND EXCLUSIVE PROPERTY OF PERFORMANCE PLASTIC TECHNOLOGIES AND/OR ITS DESIGNATED DISTRIBUTOR ABOVE. IT IS BEING ENTRUSTED TO RECIPIENT FOR A SPECIFIC LIMITED PURPOSE AND MAY BE USED ONLY FOR SUCH PURPOSE. BY ACCEPTING THIS DOCUMENT, THE RECIPIENT AGREES THAT HE WILL ENSURE THAT THE DOCUMENT AND ALL INFORMATION THEREON: (1) WILL BE MAINTAINED IN STRICTEST CONFIDENCE; (2) WILL NOT BE REPRODUCED, IN WHOLE OR IN PART, IN ANY MANNER WHATSOEVER WITHOUT THE EXPRESS WRITTEN APPROVAL OF PPT; (3) WILL NOT BE DISCLOSED DIRECTLY OR INDIRECTLY, IN ANY MANNER OR FORM, TO ANY THIRD PARTY WITHOUT THE EXPRESS WRITTEN APPROVAL OF PPT AND; (4) WILL BE PROMPTLY AND VOLUNTARILY RETURNED, WITH ANY AND ALL COPIES, TO PPT WHEN IT HAS SERVED THE PURPOSE INTENDED BY PPT, OR AT THE REQUEST OF PPT.



100 cc CT ROUND WIDE MOUTH PACKER  
L38SP400 FINISH

FILE NAME:  
XXXX\_100cc-STR-SIDE  
(15-075-01-E)

SIZE C DRAWN BY: RRJ DWG NO. 3196-0203-E  
SCALE: 1,4:1 DATE: 09-17-2010 SHEET 1 OF 1

19.29 SQUARE INCHES	5.19 SQUARE INCHES	16.0 ±1.0	PET	123.9 ±4.5 cc (4.19 ±.15 fl oz)
SURFACE AREA BELOW BASE OF NECK	AREA AT PART LINE BELOW BASE OF NECK	GRAMS	MAT'L.	OVERFLOW CAPACITY