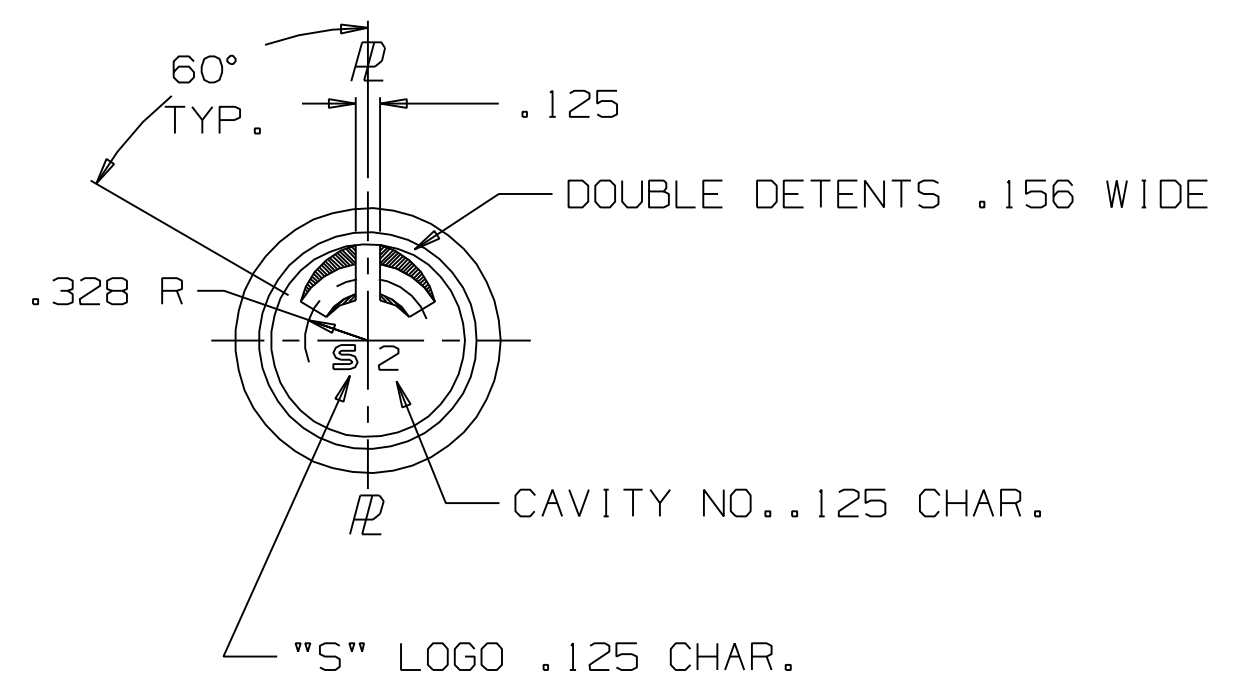
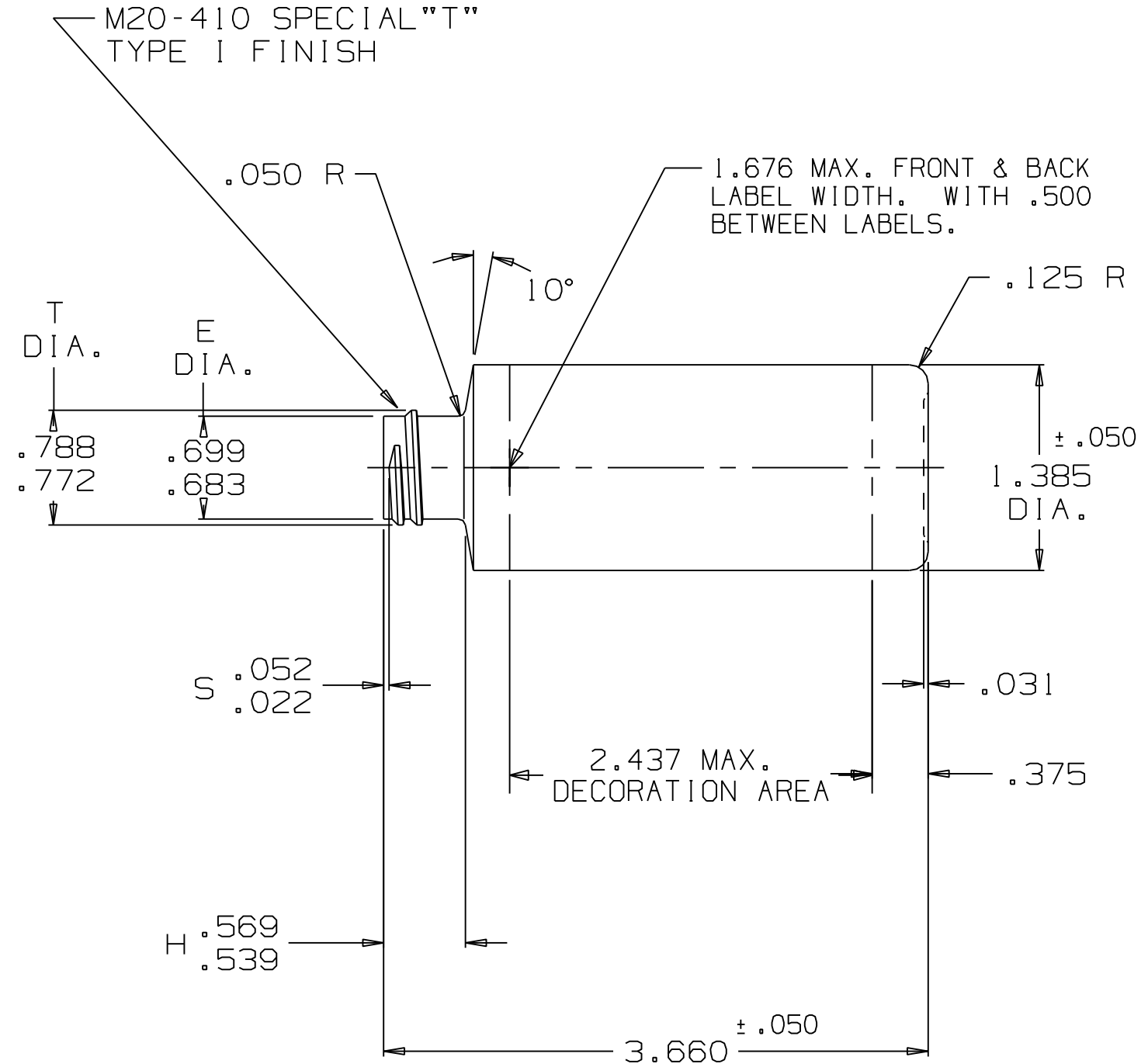
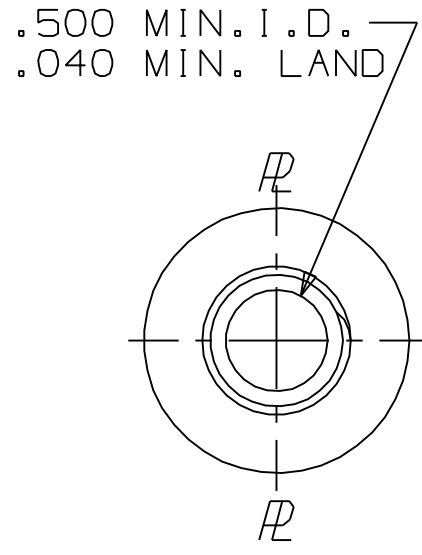


TYPE I
FINISH DETAIL
SCALE 5:1



NOTES :
 1) OVERFLOW CAPACITY : 2.35 ± .12 FL.OZ.
 (69.4 ± 3.5 CC'S.)
 2) WEIGHT : 8.5 ± .5 GRAMS

REVISIONS	DESCRIPTION	DATE	APPROVED
G	ADDED TOOL NOS. 5 & 6	6/13/12	WJP
F	ADDED LABEL DWG #	19OCT06	KENT
E	ADDED HIM 63404	4/18/04	JEH
D	ADDED CODES HIM-63378, HIM-63388 & CHART	25APR03	KENT
C	ADDED HIM 63367, P-TD26-4800 & B-TD26-4801	4/8/02	JEH
B	REMOVED CODE HIM-63333, ADDED HIM-63353/UPDATED OVERALL DIM. TOL.	11JAN01	KENT
A2	CODE CHART & HIM63-333 ADDED	11/16/98	CAS
A1	MODIFIED I.D. FINISH DETAIL		
LTR			

TOOL CHART
6 MAP 9797-003
5 MAP 9797-002
4 B-TD26-4801
3 P-TD26-4800
2 B-TD26-4153
1 P-TD26-4152

CODE CHART
6 HIM 63404
5 HIM 63388
4 HIM 63378
3 HIM 63367
2 HIM 63353
1 HIM 63319

DIMENSIONS SHOWN ARE:
 AS MOLDED AFTER TREAT
 AFTER TREAT & DECO
 THIS DRAWING HAS BEEN PREPARED BY SILGAN PLASTICS FOR OUR OWN PRODUCTION OF THE ARTICLE SHOWN AND MAY NOT BE COPIED OR UTILIZED BY OTHERS WITHOUT OUR PRIOR WRITTEN CONSENT.

DRAWN BY	MATERIAL	CUSTOMER
CAS	HDPE	SILGAN PLASTICS CORP.
DATE	QUOTE NO.	DESCRIPTION
12/19/97		2 FL. OZ. S/L CYLINDER
INFO.	REF. DWG. NO.	
	MC9-7224-J	
CAD	TOOLING NO.	
UG	SEE CHART	
SCALE	CODE NO.	
FULL	SEE CHART	
	SURF. AREA	
		DRAWING NO. MC-9-12163-G

