

SECTION A-A

.167 PITCH - 6 THREADS PER INCH
495° FULL DEPTH THREAD

	TOLERANCE	UNITS	
E	±0.012 [0.30]	in [mm]	2.664 [67.67]
T	±0.011 [0.28]	in [mm]	2.746 [69.75]
H (Inner)	±0.007 [0.18]	in [mm]	0.382 [9.70]
H (Seated)	MINIMUM	in [mm]	0.509 [12.93]
OD	±0.010 [0.25]	in [mm]	3.038 [77.17]
OAH	±0.010 [0.25]	in [mm]	0.664 [16.87]
PART WEIGHT (ASSEMBLY)	±2.1	g	19.0

STATIC TORQUE RECOMMENDATION
28-50 in-lbs
 THIS REQUIREMENT MAY VARY DEPENDING UPON BOTTLE MATERIAL, NECK FINISH, AND CAPPING EQUIPMENT

THE CLOSURE DIMENSIONS DEPICTED ARE THOSE WHICH HAVE GENERALLY BEEN FOUND TO BE FUNCTIONAL BASED ON INDUSTRY EXPERIENCE BECAUSE OF VARIABILITY IN GLASS AND PLASTIC CONTAINER FINISHES, EACH CLOSURE/FINISH SYSTEM SHOULD BE INDIVIDUALLY EVALUATED AND TESTED TO ENSURE IT MEETS APPLICABLE PERFORMANCE CRITERIA. SEE QUALITY ASSURANCE SPECIFICATIONS FOR ADDITIONAL INFORMATION.

MOLD-RITE, WEATHERCHEM AND STULL TECHNOLOGIES RESERVES THE RIGHT TO REVISE ANY OR ALL SPECIFICATIONS AND REQUIREMENTS.

DRAWING TYPE : CUSTOMER

DIMENSIONS ENCLOSED IN () INDICATE REFERENCE DIMENSIONS AND NO TOLERANCE LIMITS ARE ESTABLISHED
 TOLERANCES UNLESS OTHERWISE SPECIFIED

DIMENSION (inches)	TOLERANCE	DIMENSION (mm)	TOLERANCE
0-0.787	±0.006	0-20	±0.152
0.788-1.181	±0.008	21-30	±0.203
1.182-2.756	±0.012	31-70	±0.305
2.757-3.937	±0.016	71-100	±0.406
3.938-5.096	±0.020	101-150	±0.508
5.097-7.874	±0.024	151-200	±0.610
7.875-9.843	±0.032	201-250	±0.813

ANGULAR TOLERANCE ± 2°

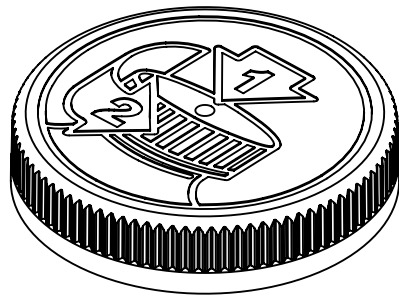
PROPRIETARY AND CONFIDENTIAL
 THIS DRAWING IS PROTECTED BY COPYRIGHT AND CONTAINS INFORMATION PROPRIETARY TO MOLD-RITE, WEATHERCHEM AND STULL TECHNOLOGIES. ANY REPRODUCTION, DISCLOSURE, OR USE OF ITS CONTENTS OR ANY PART THEREOF IS EXPRESSLY PROHIBITED EXCEPT AS MOLD-RITE, WEATHERCHEM AND STULL TECHNOLOGIES OTHERWISE MAY AGREE IN WRITING



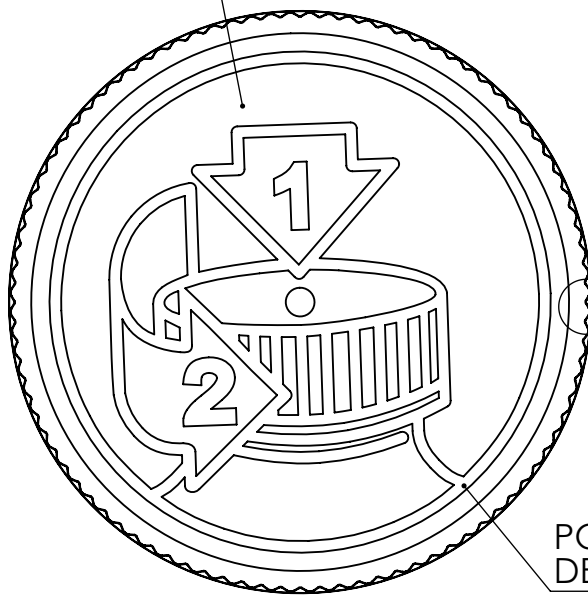
THIRD ANGLE PROJECTION SOLIDWORKS	DISTRIBUTION CODE D	DRAWING NAME 70-400 CRC ASSM PCTO DEBOSSED LOGO
DRAWN BY: L BROZELL	01/15/15	DRAWING NUMBER CQA-10125
QA APPR: A PAINE	07/06/16	MATERIAL PP/CO-POLY
MODEL NUMBER: 10125-01-AA 70MM PDT ASSM (MASTER)		SCALE SHEET SIZE SHEET REV N/P 2:3 8½ x 11 1 of 3 02 AC

REVISION HISTORY

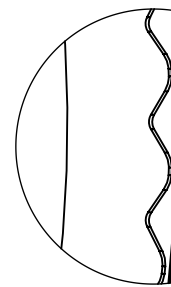
REV	N/P	DATE	REVISION	DE
00	AA	01/15/15	INITIAL DRAWING	LMB
01	AA	05/08/15	UPDATED DRAWING FOR VALIDATION RUN DATA	CDB
02	AA	06/11/15	UPDATED DRAWING FOR RELEASE	CDB
02	AB	06/30/15	UPDATED DRAWING FOR CORRECTED DATA	CDB
02	AC	07/05/16	ADDED H (SEATED) PAGE 1. CORRECTED BOTTLE BEAD 2.603 WAS 3.603	BDG



MATTE FINISH
TOP SURFACE



RIB



DETAIL RIB
SCALE 5 : 1
(92) EQUISPACED RIBS

POLISHED INSTRUCTIONS
DEBOSSED 0.010 [0.25]

THE CLOSURE DIMENSIONS DEPICTED ARE THOSE WHICH HAVE GENERALLY BEEN FOUND TO BE FUNCTIONAL BASED ON INDUSTRY EXPERIENCE BECAUSE OF VARIABILITY IN GLASS AND PLASTIC CONTAINER FINISHES, EACH CLOSURE/FINISH SYSTEM SHOULD BE INDIVIDUALLY EVALUATED AND TESTED TO ENSURE IT MEETS APPLICABLE PERFORMANCE CRITERIA. SEE QUALITY ASSURANCE SPECIFICATIONS FOR ADDITIONAL INFORMATION.

MOLD-RITE, WEATHERCHEM AND STULL TECHNOLOGIES RESERVES THE RIGHT TO REVISE ANY OR ALL SPECIFICATIONS AND REQUIREMENTS.

DRAWING TYPE : CUSTOMER

DIMENSIONS ENCLOSED IN () INDICATE REFERENCE DIMENSIONS AND NO TOLERANCE LIMITS ARE ESTABLISHED

TOLERANCES UNLESS OTHERWISE SPECIFIED

DIMENSION (inches)	TOLERANCE	DIMENSION (mm)	TOLERANCE
0-0.787	±0.006	0-20	±0.152
0.788-1.181	±0.008	21-30	±0.203
1.182-2.756	±0.012	31-70	±0.305
2.757-3.937	±0.016	71-100	±0.406
3.938-5.096	±0.020	101-150	±0.508
5.097-7.874	±0.024	151-200	±0.610
7.875-9.843	±0.032	201-250	±0.813

ANGULAR TOLERANCE ± 2°

PROPRIETARY AND CONFIDENTIAL

THIS DRAWING IS PROTECTED BY COPYRIGHT AND CONTAINS INFORMATION PROPRIETARY TO MOLD-RITE, WEATHERCHEM AND STULL TECHNOLOGIES. ANY REPRODUCTION, DISCLOSURE, OR USE OF ITS CONTENTS OR ANY PART THEREOF IS EXPRESSLY PROHIBITED EXCEPT AS MOLD-RITE, WEATHERCHEM AND STULL TECHNOLOGIES OTHERWISE MAY AGREE IN WRITING



DISTRIBUTION CODE
D

DRAWING NAME
**70-400 CRC ASSM
PCTO DEBOSSED LOGO**

DRAWN BY: REFER TO PAGE 1

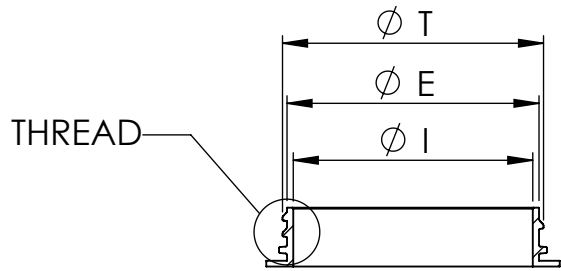
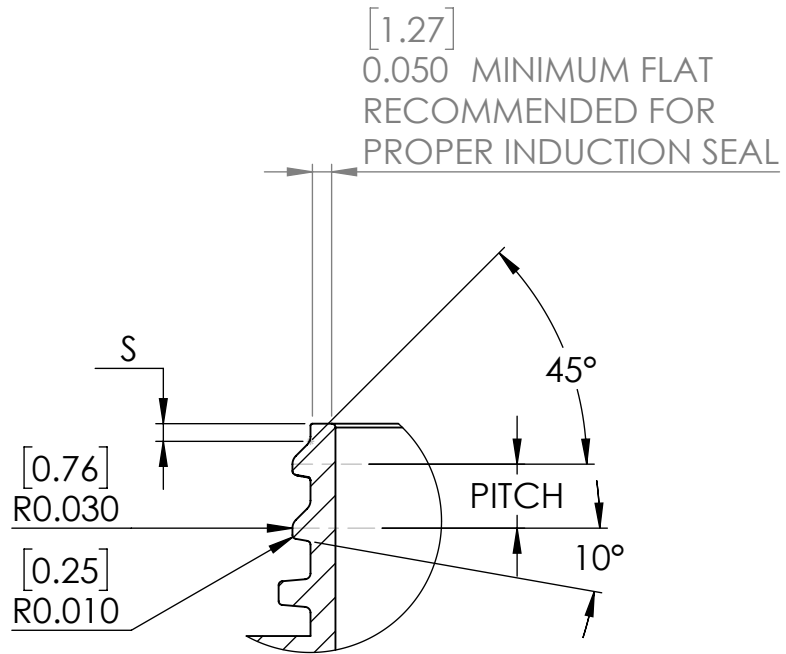
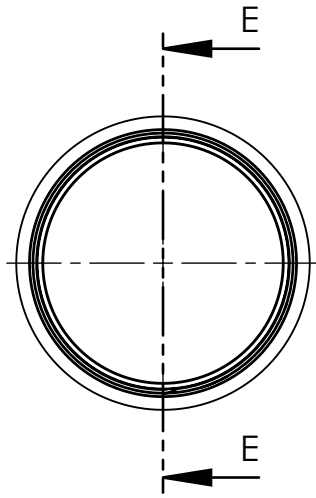
DRAWING NUMBER
CQA-10125

QA APPR: REFER TO PAGE 1

MATERIAL
SEE NOTES

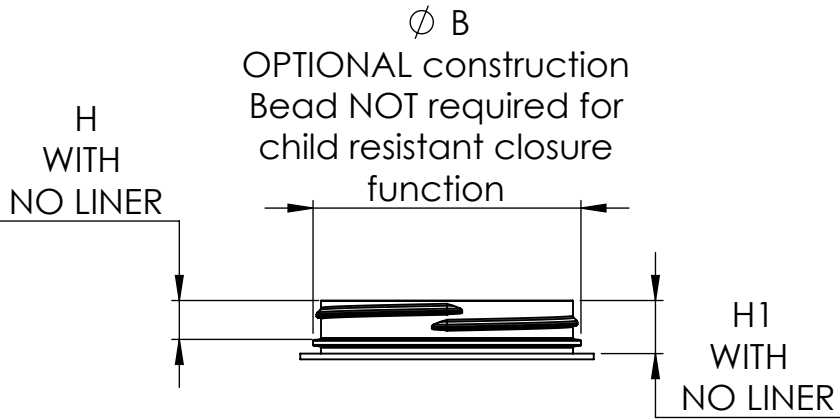
SCALE	SHEET SIZE	SHEET	REV	N/P
	8½ x 11	2 of 3	02	AC

Recommended Neck Finish



SECTION E-E
SCALE 1 : 2

DETAIL THREAD
SCALE 2 : 1



	TOLERANCE	UNITS	
E	±0.017 [0.43]	in [mm]	2.625 [66.68]
T	±0.017 [0.43]	in [mm]	2.719 [69.06]
I	MINIMUM	in [mm]	2.247 [57.07]
S	±0.015 [0.38]	in [mm]	0.046 [1.17]
H	MINIMUM	in [mm]	0.393 [9.98]
H1	MINIMUM	in [mm]	0.538 [13.67]
B	MAXIMUM	in [mm]	2.800 [71.12]
TPI			6
PITCH		in [mm]	0.167 [4.23]

THE CLOSURE DIMENSIONS DEPICTED ARE THOSE WHICH HAVE GENERALLY BEEN FOUND TO BE FUNCTIONAL BASED ON INDUSTRY EXPERIENCE BECAUSE OF VARIABILITY IN GLASS AND PLASTIC CONTAINER FINISHES, EACH CLOSURE/FINISH SYSTEM SHOULD BE INDIVIDUALLY EVALUATED AND TESTED TO ENSURE IT MEETS APPLICABLE PERFORMANCE CRITERIA. SEE QUALITY ASSURANCE SPECIFICATIONS FOR ADDITIONAL INFORMATION.

MOLD-RITE, WEATHERCHEM AND STULL TECHNOLOGIES RESERVES THE RIGHT TO REVISE ANY OR ALL SPECIFICATIONS AND REQUIREMENTS.

DRAWING TYPE : CUSTOMER

DIMENSIONS ENCLOSED IN () INDICATE REFERENCE DIMENSIONS AND NO TOLERANCE LIMITS ARE ESTABLISHED

TOLERANCES UNLESS OTHERWISE SPECIFIED

DIMENSION (inches)	TOLERANCE	DIMENSION (mm)	TOLERANCE
0-0.787	±0.006	0-20	±0.152
0.788-1.181	±0.008	21-30	±0.203
1.182-2.756	±0.012	31-70	±0.305
2.757-3.937	±0.016	71-100	±0.406
3.938-5.096	±0.020	101-150	±0.508
5.097-7.874	±0.024	151-200	±0.610
7.875-9.843	±0.032	201-250	±0.813

ANGULAR TOLERANCE ± 2°

PROPRIETARY AND CONFIDENTIAL

THIS DRAWING IS PROTECTED BY COPYRIGHT AND CONTAINS INFORMATION PROPRIETARY TO MOLD-RITE, WEATHERCHEM AND STULL TECHNOLOGIES. ANY REPRODUCTION, DISCLOSURE, OR USE OF ITS CONTENTS OR ANY PART THEREOF IS EXPRESSLY PROHIBITED EXCEPT AS MOLD-RITE, WEATHERCHEM AND STULL TECHNOLOGIES OTHERWISE MAY AGREE IN WRITING



D

DRAWING NAME

**70-400 CRC
RECOMMENDED NECK FINISH**

DRAWING NUMBER

CQA-10125

DRAWN BY: REFER TO PAGE 1

QA APPR: REFER TO PAGE 1

MATERIAL

SCALE	SHEET SIZE	SHEET	REV	N/P
1:2 & NOTED	8½ x 11	3 of 3	02	AC



1 PLANT STREET
 PLATTSBURGH, NY 12901
 TEL 518.561.1812
 FAX 518.561.0017
 MRPCAP.COM

Product Data Sheet

MRP-PP30-1 Grade Polypropylene, Homopolymer Plastic Resin

Product Description

MRP-PP30-1 is a high flow polypropylene homopolymer resin designed for injection molding applications requiring good balance stiffness, excellent part finish, process ability, and good mold release.

Compliant to the Following Regulatory Standards:

FDA-21 CFR 177.1520(c)
 EU 10/2011, EC 2002/72
 RoHS
 Proposition 65
 CONEG/Heavy Metal

Typical Properties	Method	Typical Value	Unit
Physical			
Melt Mass-Flow Rate (MFR) (230°C/2.16 kg)	ASTM D1238	30	g/10 min
Mechanical			
Tensile Strength (50mm/min) (Yield)	ASTM D 638	33.1	MPa
Tensile Elongation (50mm/min) (Yield)	ASTM D 638	10	%
Flexural Modulus – 1% Secant (1.3 mm/min)	ASTM D790A	1380	MPa
Hardness, Rockwell R	ASTM D785	104	-
Impact			
Notched Izod impact (23 °C, Method A)	ASTM D 256A	37	J/m
Thermal			
Heat Deflection (Softening Point) Unannealed DTLU @ 66psi	ASTM D 648	91	°C
Processing Range	----	400 – 500	°F

For further regulatory information contact Mold-Rite Plastics customer service or sales department.

Notes:

These are typical properties not to be construed as specifications.
 Mold-Rite Plastics warrants this grade to meet typical data values and physical, chemical, and processing properties.

All results were obtained from manufacturer product data sheets (where applicable). The data are intended as a general guide, only, and do not necessarily represent results that may be obtained elsewhere. The use of Mold-Rite Plastics products must be guided by the users' own methods for selection of proper formulation. Mold-Rite Plastics disclaims any responsibility for misuse or misapplication of its products. Mold-Rite Plastics' liability and customer's exclusive remedy for any claims arising out of sales of its products are expressly limited to customer option for replacement (not to exceed the purchase price) with the addition of transportation charges, on material for which damage is claimed.



1 PLANT STREET
 PLATTSBURGH, NY 12901
 TEL 518.561.1812
 FAX 518.561.0017
MRPCAP.COM

Product Data Sheet

CP0001 Grade Polypropylene, Impact Copolymer Plastic Resin

Product Description

CP0001 is a high flow, high impact polypropylene copolymer grade resin designed for injection molding applications requiring good balance stiffness, impact resistance and process ability.

Compliant to the Following Regulatory Standards:

FDA-21 CFR 177.1520(c)

EU 10/2011, EC 2002/72

RoHS

Proposition 65

CONEG/Heavy Metal

Typical Properties	Method	Typical Value	Unit
Physical			
Melt Mass-Flow Rate (MFR) (230°C/2.16 kg)	ASTM D1238	35	g/10 min
Mechanical			
Tensile Strength (50mm/min) (Yield)	ASTM D 638	22	MPa
Tensile Elongation (50mm/min) (Yield)	ASTM D 638	6	%
Flexural Modulus – 1% Secant (1.3 mm/min)	ASTM D790A	1,000	MPa
Hardness, Rockwell R	ASTM D785	95	-
Impact			
Notched Izod impact (23 °C, Method A)	ASTM D 256A	107	J/m
Thermal			
Heat Deflection (Softening Point) Unannealed DTLU @ 66psi	ASTM D 648	88	°C
Processing Range	-----	400 – 500	°F

For further regulatory information contact Mold-Rite Plastics customer service or sales department.

Notes:

These are typical properties not to be construed as specifications.

Mold-Rite Plastics warrants this grade to meet typical data values and physical, chemical, and processing properties.

All results were obtained from manufacturer product data sheets (where applicable). The data are intended as a general guide, only, and do not necessarily represent results that may be obtained elsewhere. The use of Mold-Rite Plastics products must be guided by the users' own methods for selection of proper formulation. Mold-Rite Plastics disclaims any responsibility for misuse or misapplication of its products. Mold-Rite Plastics' liability and customer's exclusive remedy for any claims arising out of sales of its products are expressly limited to customer option for replacement (not to exceed the purchase price) with the addition of transportation charges, on material for which damage is claimed.



1 PLANT STREET
 PLATTSBURGH, NY 12901
 TEL 518.561.1812
 FAX 518.561.0017
 MRPCAP.COM

Product Data Sheet

MRPWH01 White

Product Description

This specification, designated by Mold-Rite Plastics, covers all colorants that meet the typical value data listed below;

Regulatory Compliance

FDA – Title 21 CFR for Food & Drug Contact
 RoHS Compliant
 CONEG/Heavy Metal Compliant
 Proposition 65 Compliant

Typical Properties	Typical Value
Density	.90
Pellets	Standard
Carrier Resin	PP
Visual Evaluation	Excellent
Additives	None
DE Tolerance	< 2.00

For further regulatory information, contact Mold-Rite Plastics customer service or sales department.

Notes: These are typical properties not to be construed as specifications. Mold-Rite Plastics reserves that right to include any other colorant that meets that above data values and regulatory requirements.

All results were obtained from manufacturer product data sheets (where applicable). The data are intended as a general guide only and do not necessarily represent results that may be obtained elsewhere. The use of Mold-Rite Plastics products must be guided by the users own methods for selection of proper formulation. Mold-Rite Plastics disclaims any responsibility for misuse or miss application of its products. Mold-Rite Plastics liability and customer’s exclusive remedy for any claims arising out of sales of its products are expressly limited at customer option for replacement not to exceed the purchase price plus transportation charges thereon in respect to any material which damage is claimed.

Rev 3; Date: 04/05/2016



Freshness and Protection for Today's Packaging

FoilSeal™ Technical Data Sheet

.035" C25P FS 3-19

Revision: FS319-07282014

MRP DESCRIPTION
(F39) (F39)FS3-19/C25P.035 PL FOAM

Product	.035" C25P FS 3-19																				
Scope	Two piece foam backed heat induction foil innerseal that will provide an aggressive bond with clean peel removal from PET and PVC containers. (Not recommended for use on CPET. Easy access / "puncture foil" when wax bonded to pulp.																				
Composition	<table border="1"> <thead> <tr> <th>Material</th> <th>Standard</th> <th>Metric</th> </tr> </thead> <tbody> <tr> <td>Backing</td> <td>.035"</td> <td>.889 mm</td> </tr> <tr> <td>Paper</td> <td>.005"</td> <td>.127 mm</td> </tr> <tr> <td>Wax</td> <td>-</td> <td>-</td> </tr> <tr> <td>Foil</td> <td>.001"</td> <td>.0254mm</td> </tr> <tr> <td>Heat Seal</td> <td>.0005"</td> <td>.0127mm</td> </tr> </tbody> </table>	Material	Standard	Metric	Backing	.035"	.889 mm	Paper	.005"	.127 mm	Wax	-	-	Foil	.001"	.0254mm	Heat Seal	.0005"	.0127mm		
Material	Standard	Metric																			
Backing	.035"	.889 mm																			
Paper	.005"	.127 mm																			
Wax	-	-																			
Foil	.001"	.0254mm																			
Heat Seal	.0005"	.0127mm																			
Adhesive or resin bonding layers not shown.																					
FDA Status: 21 CFR 177.1210	Recommended Storage and Handling: Refer to Website																				
Drug Master File (DMF): #4544	EU / EP Reg.:																				
GTR Oxygen: Essentially Zero	MVTR: Essentially Zero																				
Print Location (if any): Foil Layer and/or Heat Seal Layer																					

Selig materials are compliant with current USFDA Food allergen Guidelines.
Selig materials are compliant with California Proposition 65 labeling requirements.
Selig materials are compliant with limitation of heavy metals in packaging per CONEG & EU 94/62/EC, article 11.

MSDS's are not required as Selig is not a chemical manufacturer or distributor and our products are 'articles' intended for food packaging per 29 CFR 1910.1200 (HazCom).

The information contained within this product data bulletin is to be used as a general guide in determining which structures are offered for sealing to specific container materials. All of the information which we provide is reliable to the best of our knowledge, but the accuracy thereof is not guaranteed. We suggest that consumers determine suitability for their own application.

www.seligsealing.com

Corporate Headquarters
Selig Sealing Products, Inc.
342 E Wabash St
Forrest, IL 61741, USA
Phone: +1 (815) 785-2100
Fax: +1 (815) 657-7584

North American Sales
Selig Sealing Products, Inc.
184 Shuman Blvd., Suite 310
Naperville, IL 60563, USA
Phone: +1 (630) 922-3158
Fax: +1 (630) 922-8469

European Sales and Manufacturing
Selig UK, LTD 635-637 Ajax Avenue
Slough Trading Estate
Slough Berkshire SL14BH UK
Phone: +44 (0) 1753 773 000
Fax: +44 (0) 1753 773 111

Canadian Manufacturing
Selig Canada, ULC
145 Edward Street
Aurora, Ontario Canada, L4G 1W3
Phone: +1 (905) 727-0114
Fax: +1 (905) 727-8544

Swiss Manufacturing
Selig Switzerland LTD
Bahnhofstrasse 11
CH-8172 Niederglatt
Phone: +41 (0) 44 851 50 50
Fax: +41 (0) 44 851 50 51

