

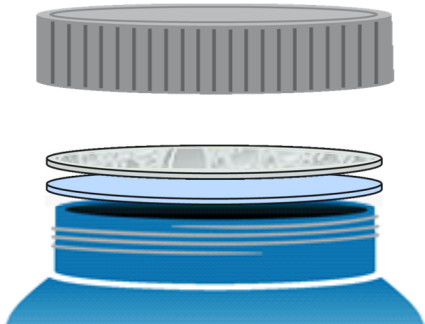
## PRODUCT DATA SHEET

### PressureSeal 20

- PressureSeal 20 is an inner seal with a construction of polystyrene foam coated with pressure sensitive adhesive.
- The US FDA does not consider liners applied with pressure sensitive adhesive to be an effective tamper-resistant feature.
- Recommended for use with dry products.
- Available with standard or custom print.

#### Typical Product Attributes

#### Construction

Polystyrene Foam Pressure Sensitive Adhesive  Thickness Tolerance Minimum Width Width Tolerance		SI (µm)	US (Mils)
		508,0 50,8 – 76,2  ± 10% 25,4 mm ± 1,6 mm	20.0 2.0 – 3.0  ± 10% 1.0 in ± 0.0625 in

#### Properties

Oxygen Transmission (O <sub>2</sub> TR)	Not Tested
Water Vapor Transmission (WVTR)	Not Tested

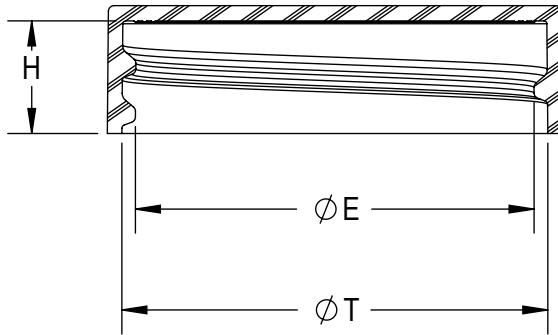
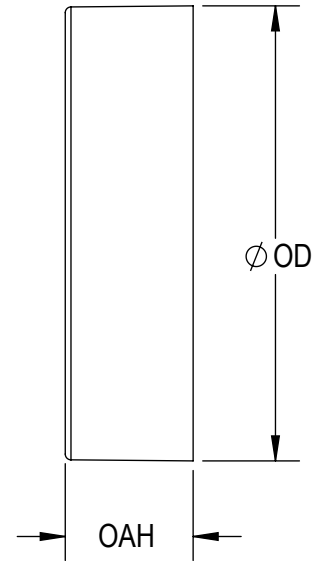
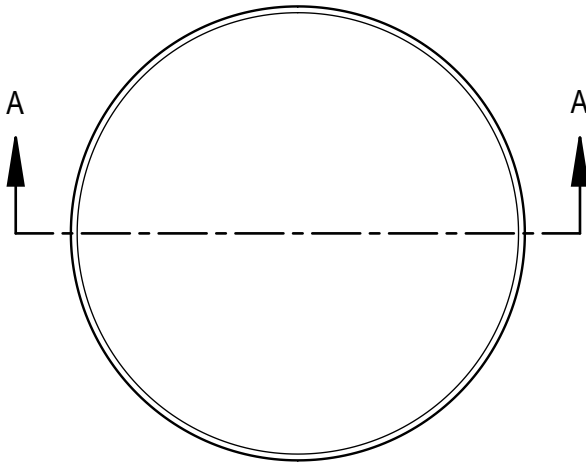
#### Regulatory Compliance

FDA Compliance	21 CFR 177.1640 Polystyrene and rubber-modified polystyrene. 21 CFR 177.1210 Closures with sealing gaskets for food containers. 21 CFR 175.125 Pressure-sensitive adhesives.
Drug Master File (DMF)	002518
Other Compliances	USFDA Food Allergen Guidelines   California Proposition 65 Labeling Requirements   Limitations of Heavy Metals in Packaging per CONEG & EU 94/62/EC, Article 11
Safety Data Sheet (SDS) Statement	Safety Data Sheets (SDS) are not required for articles as defined in 29 CFR 1910.1200, the OSHA Hazard Communication Standard (HazCom). This product is an article as defined by HazCom and is not considered to be, or to contain, a hazardous chemical based on evaluations made by our company.

Please note that construction does not reflect adhesive or resin bonding layers, if present.

Revision Number: 4  
Revised Date: 2018-06-08

**DISCLAIMER:** This information is believed to be accurate at the time of printing and is subject to change without notice. Providing this information does not convey any licenses under any patent rights or intellectual property rights of Tri-Seal or others. TRI-SEAL MAKES NO WARRANTY, EXPRESS OR IMPLIED, WITH RESPECT TO THIS INFORMATION AND DISCLAIMS ALL LIABILITY FROM RELIANCE ON IT. Tri-Seal's only warranties for this product are those written warranties as may be agreed to by Tri-Seal and its customers. TRI-SEAL SPECIFICALLY DISCLAIMS ALL OTHER WARRANTIES, EXPRESS OR IMPLIED, WITH RESPECT TO THE PRODUCT, INCLUDING, BUT NOT LIMITED TO, WARRANTIES OF MERCHANTABILITY AND FITNESS FOR PARTICULAR PURPOSE.



SECTION A-A

THREAD DETAIL INFORMATION  
6 THREADS PER INCH, 0.167 PITCH

REFERENCE	TOLERANCE	DIMENSION	UNITS
E	±0.010 [0.25]	1.395 [35.43]	in [mm]
T	±0.010 [0.25]	1.487 [37.77]	in [mm]
H	±0.008 [0.20]	0.392 [9.96]	in [mm]
OAH	±0.008 [0.20]	0.443 [11.25]	in [mm]
OD	±0.010 [0.25]	1.576 [40.03]	in [mm]
PART WEIGHT	± 0.30	2.80	g

STATIC TORQUE RECOMMENDATION  
17-26 in-lbs  
THIS REQUIREMENT MAY VARY DEPENDING  
UPON BOTTLE MATERIAL, NECK FINISH, AND  
CAPPING EQUIPMENT

DRAWING TYPE : CUSTOMER

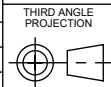
REPLACES DRAWINGS:  
C-1008

DIMENSIONS ENCLOSED IN ( )  
INDICATE REFERENCE  
DIMENSIONS AND NO TOLERANCE  
LIMITS ARE ESTABLISHED

TOLERANCES UNLESS OTHERWISE SPECIFIED

DIMENSION (inches)	TOLERANCE	DIMENSION (mm)	TOLERANCE
0-0.787	±0.006	0-20	±0.152
0.788-1.181	±0.008	21-30	±0.203
1.182-2.756	±0.012	31-70	±0.305
2.757-3.937	±0.016	71-100	±0.406
3.938-5.096	±0.020	101-150	±0.508
5.097-7.874	±0.024	151-200	±0.610
7.875-9.843	±0.032	201-250	±0.813
ANGULAR TOLERANCE ± 2°			
PROPRIETARY AND CONFIDENTIAL			

THIS DRAWING IS PROTECTED BY COPYRIGHT AND CONTAINS INFORMATION  
PROPRIETARY TO MOLD-RITE, WEATHERCHEM AND STULL TECHNOLOGIES.  
ANY REPRODUCTION, DISCLOSURE, OR USE OF ITS CONTENTS OR ANY PART  
THEREOF IS EXPRESSLY PROHIBITED EXCEPT AS MOLD-RITE, WEATHERCHEM  
AND STULL TECHNOLOGIES OTHERWISE MAY AGREE IN WRITING



DISTRIBUTION  
CODE  
**D**

DRAWING NAME  
**38-400 CT CLOSURE**  
S (Smooth - Smooth)

DRAWING NUMBER  
**CQA - 10014**

MATERIAL  
**POLYPROPYLENE**

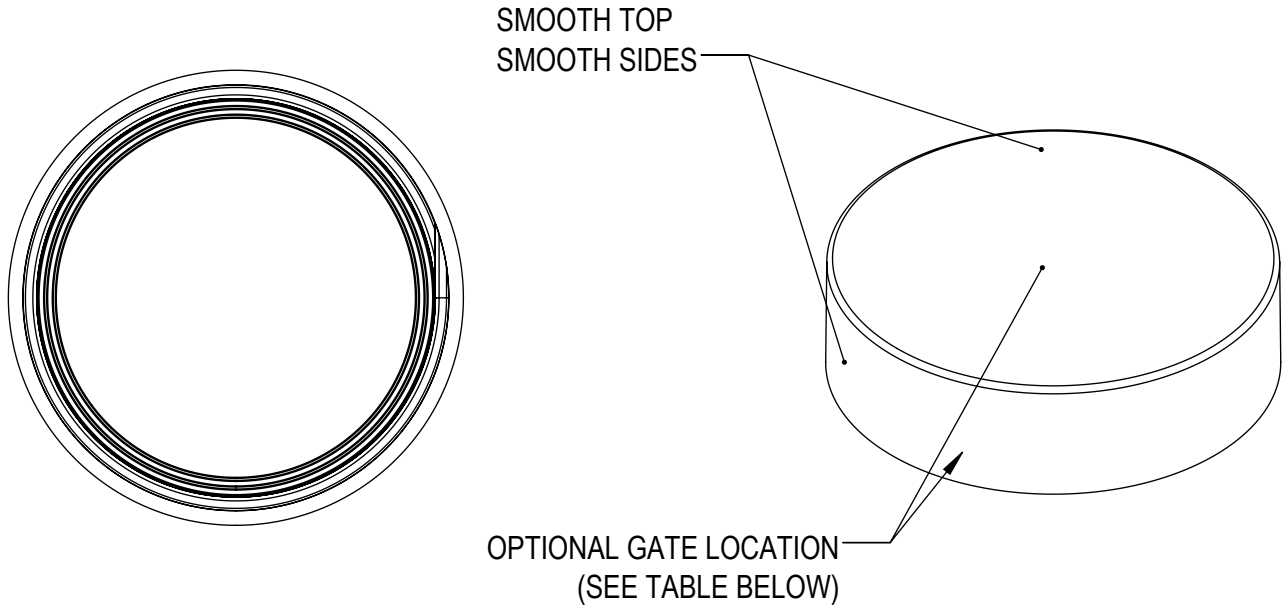
MODEL NUMBER:  
**PM 10498 38-400 CT**

SCALE	SHEET SIZE	SHEET	REV.NP
3:2	8.5in*11in	1 of 3	00.AC

THE CLOSURE DIMENSIONS  
DEPICTED ARE THOSE WHICH HAVE GENERALLY BEEN  
FOUND TO BE FUNCTIONAL BASED ON INDUSTRY  
EXPERIENCE BECAUSE OF VARIABILITY IN GLASS AND  
PLASTIC CONTAINER FINISHES, EACH CLOSURE/FINISH  
SYSTEM SHOULD BE INDIVIDUALLY EVALUATED AND  
TESTED TO ENSURE IT MEETS APPLICABLE  
PERFORMANCE CRITERIA. SEE QUALITY ASSURANCE  
SPECIFICATIONS FOR ADDITIONAL INFORMATION.

MOLD-RITE, WEATHERCHEM AND STULL TECHNOLOGIES  
RESERVES THE RIGHT TO REVISE ANY OR ALL  
SPECIFICATIONS AND REQUIREMENTS.

REVISIONS					
DATE	REV.	N/P	DESCRIPTION	ENG	DRW
2/26/2014	00	AA	INITIAL RELEASE	CM	LB
4/12/2017	00	AB	UPDATED DRAWING FORMAT	JDM	DAS
11/21/2017	00	AC	CORRECTED NOMINAL FOR OAH AND OD	JDM	JDM



MOLD NUMBER	GATE LOCATION
38011	SIDE
38012	SIDE
38017	TOP CENTER
38024	SIDE
38025	TOP CENTER
38030	TOP CENTER

THE CLOSURE DIMENSIONS DEPICTED ARE THOSE WHICH HAVE GENERALLY BEEN FOUND TO BE FUNCTIONAL BASED ON INDUSTRY EXPERIENCE BECAUSE OF VARIABILITY IN GLASS AND PLASTIC CONTAINER FINISHES, EACH CLOSURE/FINISH SYSTEM SHOULD BE INDIVIDUALLY EVALUATED AND TESTED TO ENSURE IT MEETS APPLICABLE PERFORMANCE CRITERIA. SEE QUALITY ASSURANCE SPECIFICATIONS FOR ADDITIONAL INFORMATION.

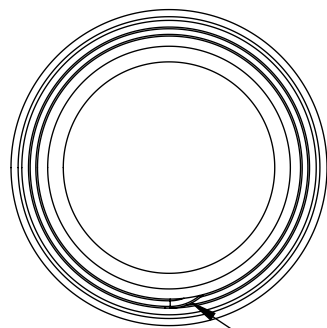
MOLD-RITE, WEATHERCHEM AND STULL TECHNOLOGIES RESERVES THE RIGHT TO REVISE ANY OR ALL SPECIFICATIONS AND REQUIREMENTS.

DRAWING TYPE : CUSTOMER

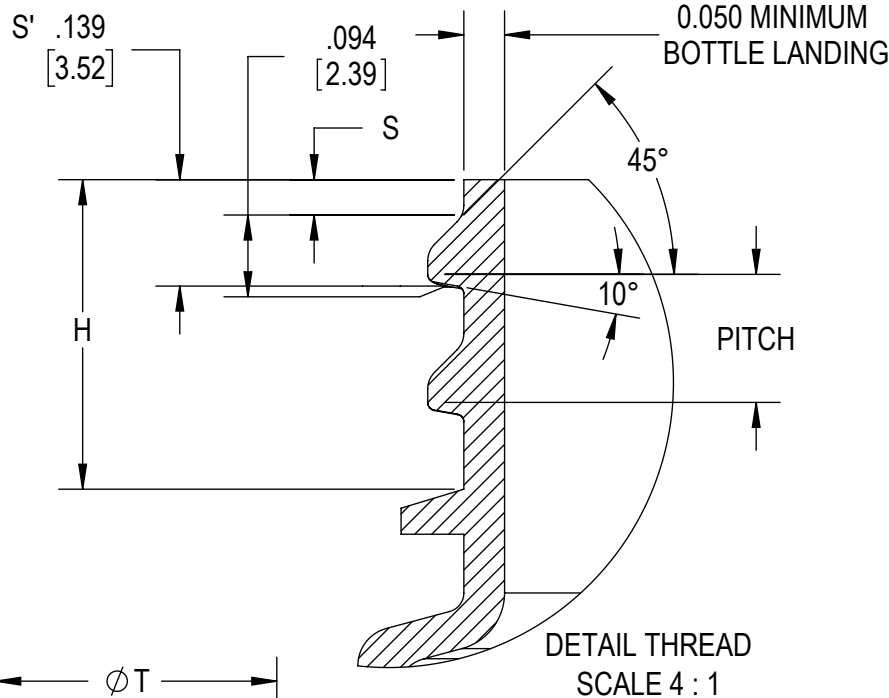
REFERENCES: 38011, 38012, 38017, 38024, 38025	DIMENSIONS ENCLOSED IN ( ) INDICATE REFERENCE DIMENSIONS AND NO TOLERANCE LIMITS ARE ESTABLISHED		
TOLERANCES UNLESS OTHERWISE SPECIFIED			
DIMENSION (inches)	TOLERANCE	DIMENSION (mm)	TOLERANCE
0-0.787	±0.006	0-20	±0.152
0.788-1.181	±0.008	21-30	±0.203
1.182-2.756	±0.012	31-70	±0.305
2.757-3.937	±0.016	71-100	±0.406
3.938-5.096	±0.020	101-150	±0.508
5.097-7.874	±0.024	151-200	±0.610
7.875-9.843	±0.032	201-250	±0.813
ANGULAR TOLERANCE ± 2°			
PROPRIETARY AND CONFIDENTIAL			
THIS DRAWING IS PROTECTED BY COPYRIGHT AND CONTAINS INFORMATION PROPRIETARY TO MOLD-RITE, WEATHERCHEM AND STULL TECHNOLOGIES. ANY REPRODUCTION, DISCLOSURE, OR USE OF ITS CONTENTS OR ANY PART THEREOF IS EXPRESSLY PROHIBITED EXCEPT AS MOLD-RITE, WEATHERCHEM AND STULL TECHNOLOGIES OTHERWISE MAY AGREE IN WRITING			

**MRP**  
MOLD-RITE PLASTICS®  
Innovative • Reliable • Responsive

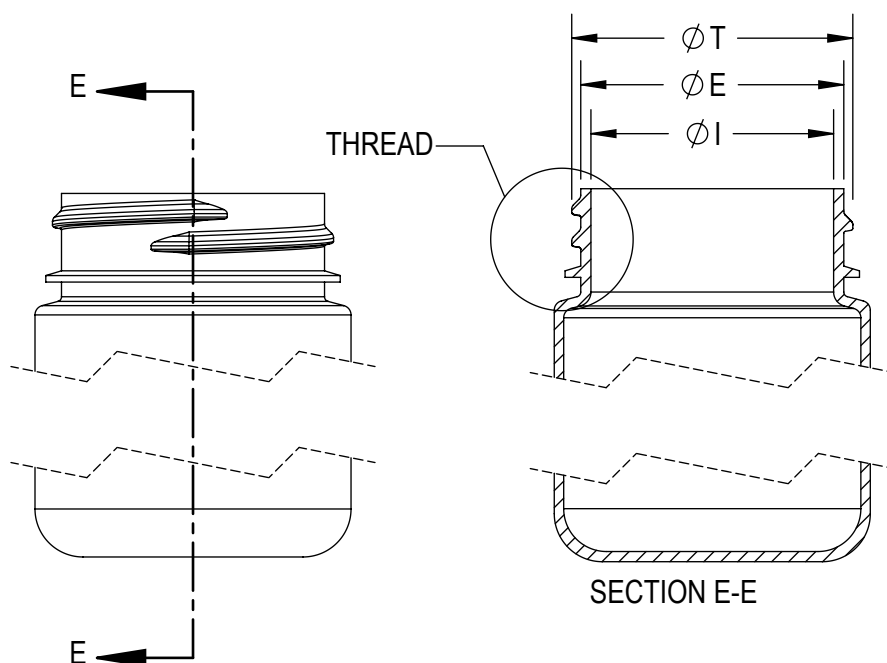
 THIRD ANGLE PROJECTION  SOLIDWORKS	DISTRIBUTION CODE  <b>D</b>	DRAWING NAME <b>38-400 CT CLOSURE S (Smooth - Smooth)</b>	
		DRAWING NUMBER <b>CQA - 10014</b>	
DRAWN BY.	DAS	4/12/2017	MATERIAL <b>POLYPROPYLENE</b>
ENG APPR.	JDM	3/21/2018	MODEL NUMBER: <b>PM 10498 38-400 CT</b>
QA APPR.	REL	03/22/2018	SCALE <b>3:2</b>
		SHEET <b>8.5 X 11</b>	REV.NP <b>2 of 3</b>
			<b>00</b>



THREAD START



DETAIL THREAD  
SCALE 4 : 1



REFERENCE	TOLERANCE	UNITS	DIMENSIONS
E	±0.012 [0.30]	in [mm]	1.370 [34.80]
T	±0.012 [0.30]	in [mm]	1.464 [37.19]
I	MINIMUM	in [mm]	0.987 [25.07]
S	±0.015 [0.38]	in [mm]	0.046 [1.17]
H	MINIMUM	in [mm]	0.403 [10.24]
TPI			6
PITCH		in	0.167 [4.24]

NOTE: THE NOMINAL ORIENTATION ILLUSTRATED IS BASED ON NOMINAL DIMENSIONS OF BOTH THE CLOSURE AND THE RECOMMENDED NECK FINISH. FOR EXACT ORIENTATION EACH BOTTLE SHOULD BE EVALUATED ON A CASE BY CASE BASIS.

THE CLOSURE DIMENSIONS DEPICTED ARE THOSE WHICH HAVE GENERALLY BEEN FOUND TO BE FUNCTIONAL BASED ON INDUSTRY EXPERIENCE BECAUSE OF VARIABILITY IN GLASS AND PLASTIC CONTAINER FINISHES, EACH CLOSURE/FINISH SYSTEM SHOULD BE INDIVIDUALLY EVALUATED AND TESTED TO ENSURE IT MEETS APPLICABLE PERFORMANCE CRITERIA. SEE QUALITY ASSURANCE SPECIFICATIONS FOR ADDITIONAL INFORMATION.

MOLD-RITE, WEATHERCHEM AND STULL TECHNOLOGIES RESERVES THE RIGHT TO REVISE ANY OR ALL SPECIFICATIONS AND REQUIREMENTS.

DRAWING TYPE : CUSTOMER

DIMENSIONS ENCLOSED IN ( ) INDICATE REFERENCE DIMENSIONS AND NO TOLERANCE LIMITS ARE ESTABLISHED

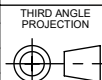
TOLERANCES UNLESS OTHERWISE SPECIFIED

DIMENSION (inches)	TOLERANCE	DIMENSION (mm)	TOLERANCE
0-0.787	±0.006	0-20	±0.152
0.788-1.181	±0.008	21-30	±0.203
1.182-2.756	±0.012	31-70	±0.305
2.757-3.937	±0.016	71-100	±0.406
3.938-5.096	±0.020	101-150	±0.508
5.097-7.874	±0.024	151-200	±0.610
7.875-9.843	±0.032	201-250	±0.813

ANGULAR TOLERANCE ± 2°

PROPRIETARY AND CONFIDENTIAL

THIS DRAWING IS PROTECTED BY COPYRIGHT AND CONTAINS INFORMATION PROPRIETARY TO MOLD-RITE, WEATHERCHEM AND STULL TECHNOLOGIES. ANY REPRODUCTION, DISCLOSURE, OR USE OF ITS CONTENTS OR ANY PART THEREOF IS EXPRESSLY PROHIBITED EXCEPT AS MOLD-RITE, WEATHERCHEM AND STULL TECHNOLOGIES OTHERWISE MAY AGREE IN WRITING



SOLIDWORKS

DISTRIBUTION CODE

D

DRAWING NAME

38-400 CT CLOSURE  
RECOMMENDED NECK FINISH

DRAWING NUMBER

CQA - 10014

MATERIAL

DRAWN BY.

DAS

4/12/2017

ENG APPR.

JDM

3/21/2018

QA APPR.

REL

03/22/2018

MODEL NUMBER:

SCALE

1:1

SHEET SIZE

8.5 X 11

SHEET

3 of 3

REV/N/P

00.AC