

SECTION L-L

8 THREADS PER INCH, 0.125 PITCH

REFERENCE	TOLERANCE	DIMENSION	UNITS
E	0.006 [0.15]	0.704 [17.88]	in [mm]
T	0.006 [0.15]	0.786 [19.96]	in [mm]
H [Seated]	REFERENCE	0.400 [10.16]	in [mm]
H [Inner]	±0.008 [0.25]	0.360 [9.14]	in [mm]
OD	±0.010 [0.25]	1.070 [27.18]	in [mm]
OAH	±0.010 [0.25]	0.575 [14.61]	in [mm]
PART WEIGHT	± 0.50	3.47	g

STATIC TORQUE RECOMMENDATION
8-12in-lbs
 THIS REQUIREMENT MAY VARY DEPENDING UPON BOTTLE MATERIAL, NECK FINISH, AND CAPPING EQUIPMENT

THE CLOSURE DIMENSIONS DEPICTED ARE THOSE WHICH HAVE GENERALLY BEEN FOUND TO BE FUNCTIONAL BASED ON INDUSTRY EXPERIENCE BECAUSE OF VARIABILITY IN GLASS AND PLASTIC CONTAINER FINISHES, EACH CLOSURE/FINISH SYSTEM SHOULD BE INDIVIDUALLY EVALUATED AND TESTED TO ENSURE IT MEETS APPLICABLE PERFORMANCE CRITERIA. SEE QUALITY ASSURANCE SPECIFICATIONS FOR ADDITIONAL INFORMATION.

MOLD-RITE, WEATHERCHEM AND STULL TECHNOLOGIES RESERVES THE RIGHT TO REVISE ANY OR ALL SPECIFICATIONS AND REQUIREMENTS.

DRAWING TYPE : CUSTOMER

REPLACES DRAWINGS:
 PIC-20-0

DIMENSIONS ENCLOSED IN () INDICATE REFERENCE DIMENSIONS AND NO TOLERANCE LIMITS ARE ESTABLISHED

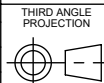
TOLERANCES UNLESS OTHERWISE SPECIFIED

DIMENSION (inches)	TOLERANCE	DIMENSION (mm)	TOLERANCE
0-0.787	±0.006	0-20	±0.152
0.788-1.181	±0.008	21-30	±0.203
1.182-2.756	±0.012	31-70	±0.305
2.757-3.937	±0.016	71-100	±0.406
3.938-5.096	±0.020	101-150	±0.508
5.097-7.874	±0.024	151-200	±0.610
7.875-9.843	±0.032	201-250	±0.813

ANGULAR TOLERANCE ± 2°

PROPRIETARY AND CONFIDENTIAL

THIS DRAWING IS PROTECTED BY COPYRIGHT AND CONTAINS INFORMATION PROPRIETARY TO MOLD-RITE, WEATHERCHEM AND STULL TECHNOLOGIES. ANY REPRODUCTION, DISCLOSURE, OR USE OF ITS CONTENTS OR ANY PART THEREOF IS EXPRESSLY PROHIBITED EXCEPT AS MOLD-RITE, WEATHERCHEM AND STULL TECHNOLOGIES OTHERWISE MAY AGREE IN WRITING



DISTRIBUTION CODE

D

DRAWING NAME

20-400 CRC ASSM
 PICTO

DRAWING NUMBER

CQA - 11115

MATERIAL

POLYPROPYLENE

MODEL NUMBER:

PM 11010 20-400 CRC ASSM

DRAWN BY: BDG

2/19/2018

ENG APPR: BDG

10/15/2019

QA APPR: REL

11/19/2019

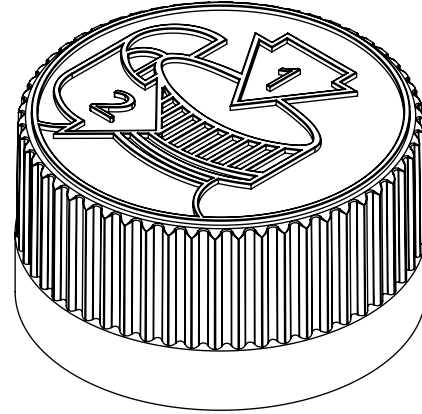
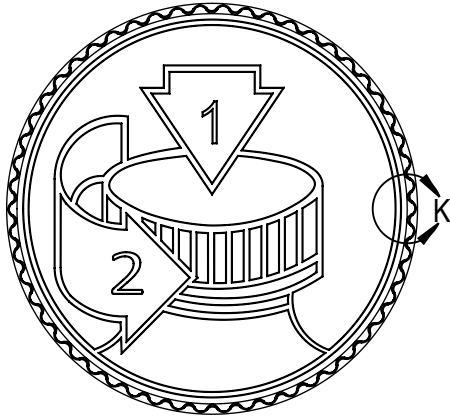
SCALE
 2:1

SHEET SIZE
 8.5" X 11"

SHEET
 1 of 3

REV.NP
 00.AD

DATE	REV	N/P	DESCRIPTION	ENG	DRWN
03/16/18	00	AA	DRAWING RELEASE	BDG	BDG
06/07/18	00	AB	CORRECTED P/N REFERENCE ON PAGE 2	BDG	BDG
09/20/19	00	AC	REDUCED T & E TOLERANCE TO 0.006	BDG	BDG
12/14/21	00	AD	CORRECTED REPLACED DRAWING PIC-20-0 WAS PDT-20	BDG	BDG



DETAIL K
(54) EQUISPACED RIBS
SCALE 4 : 1

THE CLOSURE DIMENSIONS DEPICTED ARE THOSE WHICH HAVE GENERALLY BEEN FOUND TO BE FUNCTIONAL BASED ON INDUSTRY EXPERIENCE BECAUSE OF VARIABILITY IN GLASS AND PLASTIC CONTAINER FINISHES. EACH CLOSURE/FINISH SYSTEM SHOULD BE INDIVIDUALLY EVALUATED AND TESTED TO ENSURE IT MEETS APPLICABLE PERFORMANCE CRITERIA. SEE QUALITY ASSURANCE SPECIFICATIONS FOR ADDITIONAL INFORMATION.

MOLD-RITE, WEATHERCHEM AND STULL TECHNOLOGIES RESERVES THE RIGHT TO REVISE ANY OR ALL SPECIFICATIONS AND REQUIREMENTS.

DRAWING TYPE : CUSTOMER

REFERENCES:

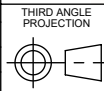
DIMENSIONS ENCLOSED IN () INDICATE REFERENCE DIMENSIONS AND NO TOLERANCE LIMITS ARE ESTABLISHED

TOLERANCES UNLESS OTHERWISE SPECIFIED

DIMENSION (inches)	TOLERANCE	DIMENSION (mm)	TOLERANCE
0-0.787	±0.006	0-20	±0.152
0.788-1.181	±0.008	21-30	±0.203
1.182-2.756	±0.012	31-70	±0.305
2.757-3.937	±0.016	71-100	±0.406
3.938-5.096	±0.020	101-150	±0.508
5.097-7.874	±0.024	151-200	±0.610
7.875-9.843	±0.032	201-250	±0.813

ANGULAR TOLERANCE ± 2°
PROPRIETARY AND CONFIDENTIAL

THIS DRAWING IS PROTECTED BY COPYRIGHT AND CONTAINS INFORMATION PROPRIETARY TO MOLD-RITE, WEATHERCHEM AND STULL TECHNOLOGIES. ANY REPRODUCTION, DISCLOSURE, OR USE OF ITS CONTENTS OR ANY PART THEREOF IS EXPRESSLY PROHIBITED EXCEPT AS MOLD-RITE, WEATHERCHEM AND STULL TECHNOLOGIES OTHERWISE MAY AGREE IN WRITING



DISTRIBUTION CODE
D

DRAWING NAME
20-400 CRC ASSM
PICTO

DRAWING NUMBER
CQA - 11115

MATERIAL
POLYPROPYLENE

DRAWN BY. BDG 2/19/2018

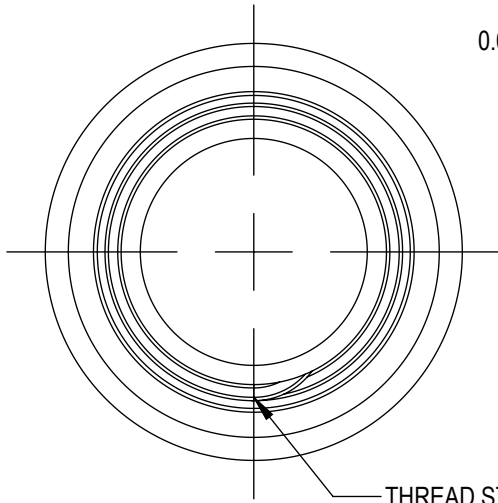
ENG APPR. BDG 10/15/2019

QA APPR. REL 11/19/2019

MODEL NUMBER: PM 11010 20-400 CRC ASSM

SCALE	SHEET SIZE	SHEET	REV.NP
2:1	8.5 X 11	2 of 3	00.AD

0.050 MINIMUM FLAT FOR INDUCTION SEALING



.084
[2.13]

S

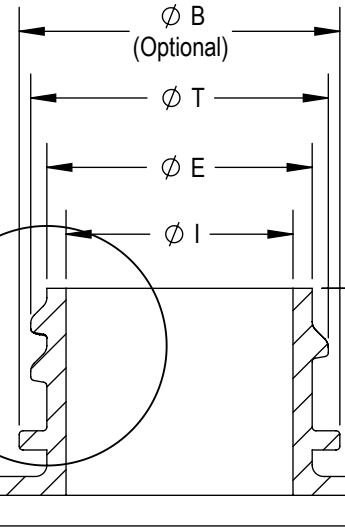
45°

PITCH

10°

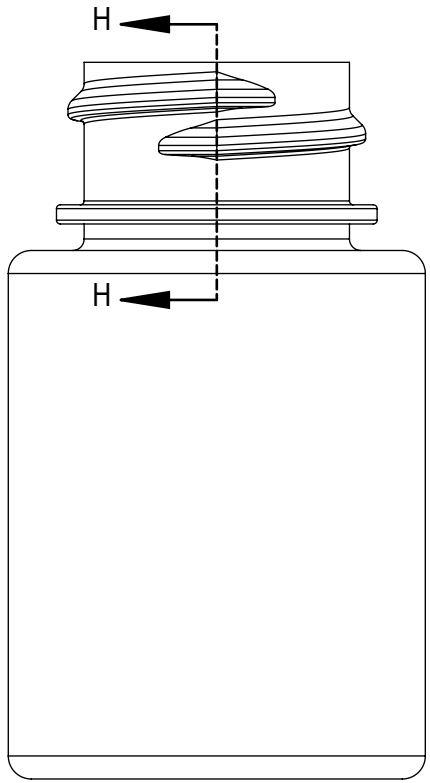
R.010
[0.25]

DETAIL THREAD
SCALE 4 : 1



THREAD

SECTION H-H
SCALE 2 : 1



REFERENCE	TOLERANCE	UNITS	DIMENSION
E	± 0.008[0.20]	in [mm]	0.691 [17.55]
T	± 0.008[0.20]	in [mm]	0.775 [19.69]
I	MINIMUM	in [mm]	0.404 [10.26]
S	±0.015[0.38]	in [mm]	0.037[0.94]
H	MINIMUM	in [mm]	0.370 [9.40]
H1	MINIMUM	in [mm]	0.490 [12.45]
B	MAXIMUM	in [mm]	0.835 [21.21]
TPI			8
PITCH		in [mm]	0.125[3.18]

NOTE: THE NOMINAL ORIENTATION ILLUSTRATED IS BASED ON NOMINAL DIMENSIONS OF BOTH THE CLOSURE AND THE RECOMMENDED NECK FINISH. FOR EXACT ORIENTATION EACH BOTTLE SHOULD BE EVALUATED ON A CASE BY CASE BASIS.

DRAWING TYPE : CUSTOMER

DIMENSIONS ENCLOSED IN () INDICATE REFERENCE DIMENSIONS AND NO TOLERANCE LIMITS ARE ESTABLISHED

TOLERANCES UNLESS OTHERWISE SPECIFIED			
DIMENSION (inches)	TOLERANCE	DIMENSION (mm)	TOLERANCE
0-0.787	±0.006	0-20	±0.152
0.788-1.181	±0.008	21-30	±0.203
1.182-2.756	±0.012	31-70	±0.305
2.757-3.937	±0.016	71-100	±0.406
3.938-5.096	±0.020	101-150	±0.508
5.097-7.874	±0.024	151-200	±0.610
7.875-9.843	±0.032	201-250	±0.813

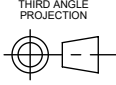
ANGULAR TOLERANCE ± 2°

PROPRIETARY AND CONFIDENTIAL

THIS DRAWING IS PROTECTED BY COPYRIGHT AND CONTAINS INFORMATION PROPRIETARY TO MOLD-RITE, WEATHERCHEM AND STULL TECHNOLOGIES. ANY REPRODUCTION, DISCLOSURE, OR USE OF ITS CONTENTS OR ANY PART THEREOF IS EXPRESSLY PROHIBITED EXCEPT AS MOLD-RITE, WEATHERCHEM AND STULL TECHNOLOGIES OTHERWISE MAY AGREE IN WRITING

THE CLOSURE DIMENSIONS DEPICTED ARE THOSE WHICH HAVE GENERALLY BEEN FOUND TO BE FUNCTIONAL BASED ON INDUSTRY EXPERIENCE BECAUSE OF VARIABILITY IN GLASS AND PLASTIC CONTAINER FINISHES, EACH CLOSURE/FINISH SYSTEM SHOULD BE INDIVIDUALLY EVALUATED AND TESTED TO ENSURE IT MEETS APPLICABLE PERFORMANCE CRITERIA. SEE QUALITY ASSURANCE SPECIFICATIONS FOR ADDITIONAL INFORMATION.

MOLD-RITE, WEATHERCHEM AND STULL TECHNOLOGIES RESERVES THE RIGHT TO REVISE ANY OR ALL SPECIFICATIONS AND REQUIREMENTS.



DISTRIBUTION CODE
D

DRAWING NAME
**20-400 CRC ASSM
Recommended Neck Finish**

DRAWING NUMBER
CQA - 11115

DRAWN BY: BDG 2/19/2018

MATERIAL

ENG APPR. BDG 10/15/2019

MODEL NUMBER:

QA APPR. REL 11/19/2019

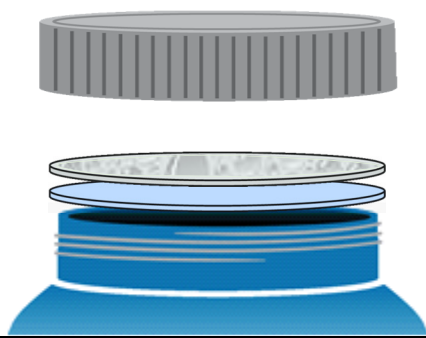
SCALE	SHEET SIZE	SHEET	REV/N/P
1:1	8.5 X 11	3 of 3	00.AD

PRODUCT DATA SHEET

PressureSeal 20

- PressureSeal 20 is an inner seal with a construction of polystyrene foam coated with pressure sensitive adhesive.
- The US FDA does not consider liners applied with pressure sensitive adhesive to be an effective tamper-resistant feature.
- Recommended for use with dry products.
- Available with standard or custom print.

Typical Product Attributes

Construction			
Polystyrene Foam Pressure Sensitive Adhesive		SI (µm)	US (Mils)
Thickness Tolerance Minimum Width Width Tolerance		508,0 50,8 – 76,2 ± 10% 25,4 mm ± 1,6 mm	20.0 2.0 – 3.0 ± 10% 1.0 in ± 0.0625 in
Properties			
Oxygen Transmission (O ₂ TR)	Not Tested		
Water Vapor Transmission (WVTR)	Not Tested		
Regulatory Compliance			
FDA Compliance	21 CFR 177.1640 Polystyrene and rubber-modified polystyrene. 21 CFR 177.1210 Closures with sealing gaskets for food containers. 21 CFR 175.125 Pressure-sensitive adhesives.		
Drug Master File (DMF)	002518		
Other Compliances	USFDA Food Allergen Guidelines California Proposition 65 Labeling Requirements Limitations of Heavy Metals in Packaging per CONEG & EU 94/62/EC, Article 11		
Safety Data Sheet (SDS) Statement	Safety Data Sheets (SDS) are not required for articles as defined in 29 CFR 1910.1200, the OSHA Hazard Communication Standard (HazCom). This product is an article as defined by HazCom and is not considered to be, or to contain, a hazardous chemical based on evaluations made by our company.		
Please note that construction does not reflect adhesive or resin bonding layers, if present.			

Revision Number: 4
Revised Date: 2018-06-08

DISCLAIMER: This information is believed to be accurate at the time of printing and is subject to change without notice. Providing this information does not convey any licenses under any patent rights or intellectual property rights of Tri-Seal or others. TRI-SEAL MAKES NO WARRANTY, EXPRESS OR IMPLIED, WITH RESPECT TO THIS INFORMATION AND DISCLAIMS ALL LIABILITY FROM RELIANCE ON IT. Tri-Seal's only warranties for this product are those written warranties as may be agreed to by Tri-Seal and its customers. TRI-SEAL SPECIFICALLY DISCLAIMS ALL OTHER WARRANTIES, EXPRESS OR IMPLIED, WITH RESPECT TO THE PRODUCT, INCLUDING, BUT NOT LIMITED TO, WARRANTIES OF MERCHANTABILITY AND FITNESS FOR PARTICULAR PURPOSE.