

SECTION A-A

**THREAD DETAIL INFORMATION:**  
6 THREADS PER INCH, 0.167" PITCH

REFERENCE	TOLERANCE	DIMENSION	UNITS
E	±0.010 [0.25]	1.571 [39.90]	in [mm]
T	±0.010 [0.25]	1.665 [42.29]	in [mm]
H	±0.010 [0.25]	0.390 [9.91]	in [mm]
OAH	±0.010 [0.25]	0.437 [11.10]	in [mm]
OD	±0.015 [0.38]	1.754 [44.55]	in [mm]
PART WEIGHT	±0.50	3.18	g

**STATIC TORQUE RECOMMENDATION**  
17-27 in-lbs  
THIS REQUIREMENT MAY VARY DEPENDING UPON BOTTLE MATERIAL, NECK FINISH, AND CAPPING EQUIPMENT

THE CLOSURE DIMENSIONS DEPICTED ARE THOSE WHICH HAVE GENERALLY BEEN FOUND TO BE FUNCTIONAL BASED ON INDUSTRY EXPERIENCE BECAUSE OF VARIABILITY IN GLASS AND PLASTIC CONTAINER FINISHES, EACH CLOSURE/FINISH SYSTEM SHOULD BE INDIVIDUALLY EVALUATED AND TESTED TO ENSURE IT MEETS APPLICABLE PERFORMANCE CRITERIA. SEE QUALITY ASSURANCE SPECIFICATIONS FOR ADDITIONAL INFORMATION.

MOLD-RITE, WEATHERCHEM AND STULL TECHNOLOGIES RESERVES THE RIGHT TO REVISE ANY OR ALL SPECIFICATIONS AND REQUIREMENTS.

DRAWING TYPE : **CUSTOMER**

REPLACES DRAWINGS:  
C-1009

DIMENSIONS ENCLOSED IN ( ) INDICATE REFERENCE DIMENSIONS AND NO TOLERANCE LIMITS ARE ESTABLISHED

TOLERANCES UNLESS OTHERWISE SPECIFIED

DIMENSION (inches)	TOLERANCE	DIMENSION (mm)	TOLERANCE
0-0.787	±0.006	0-20	±0.152
0.788-1.181	±0.008	21-30	±0.203
1.182-2.756	±0.012	31-70	±0.305
2.757-3.937	±0.016	71-100	±0.406
3.938-5.096	±0.020	101-150	±0.508
5.097-7.874	±0.024	151-200	±0.610
7.875-9.843	±0.032	201-250	±0.813

ANGULAR TOLERANCE ± 2°

PROPRIETARY AND CONFIDENTIAL

THIS DRAWING IS PROTECTED BY COPYRIGHT AND CONTAINS INFORMATION PROPRIETARY TO MOLD-RITE, WEATHERCHEM AND STULL TECHNOLOGIES. ANY REPRODUCTION, DISCLOSURE, OR USE OF ITS CONTENTS OR ANY PART THEREOF IS EXPRESSLY PROHIBITED EXCEPT AS MOLD-RITE, WEATHERCHEM AND STULL TECHNOLOGIES OTHERWISE MAY AGREE IN WRITING



DISTRIBUTION CODE  
**D**

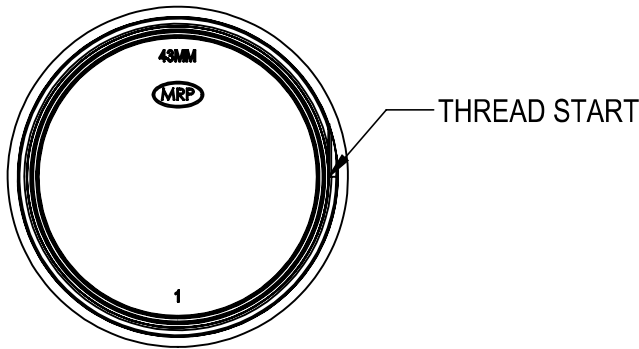
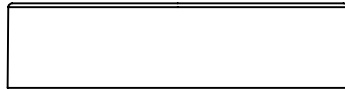
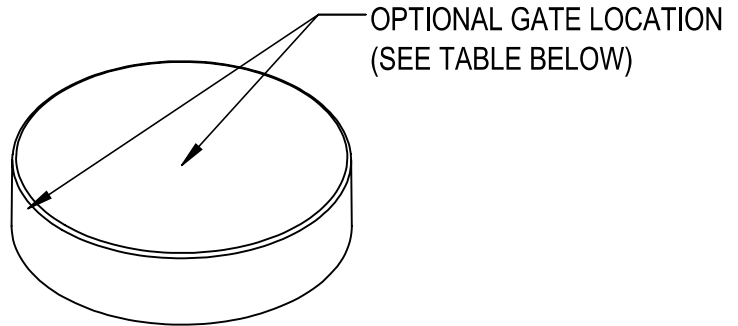
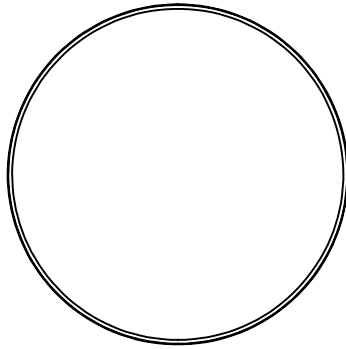
DRAWING NAME  
**43-400 CT CLOSURE S (SMOOTH SIDES, SMOOTH TOP)**  
DRAWING NUMBER  
**CQA - 10742**

DRAWN BY.	DAS	9/6/2017
ENG APPR.	BDG	2/1/2022
QA APPR.	TEM	02/01/2022

MATERIAL <b>POLYPROPYLENE</b>			
MODEL NUMBER: <b>PM 10814 43-400 CT</b>			
SCALE <b>3:2</b>	SHEET SIZE <b>8.5" X 11"</b>	SHEET <b>1 of 3</b>	REV.NP <b>00.AC</b>

REVISIONS

DATE	REV.	N/P	DESCRIPTION	ENG	DRW
09/05/2017	00	AA	UPDATED DRAWING FORMAT	BDG	DAS
11/02/2018	00	AB	DRAWING UPDATED TO REFLECT HISTORICAL RUN DATA & PROCESS CAPABILITY. NO CHANGES TO THE STEEL OR PART HAVE OCCURRED	BDG	AMK
11/23/2021	00	AC	CORRECTED T DIMENSION. WAS 1.659 ±0.015	BDG	BDG



MOLD NUMBER	GATE LOCATION
43001	SIDE
43004	SIDE
43006	TOP

DRAWING TYPE : CUSTOMER			
REFERENCES: 43001, 43004, 43006		DIMENSIONS ENCLOSED IN ( ) INDICATE REFERENCE DIMENSIONS AND NO TOLERANCE LIMITS ARE ESTABLISHED	
TOLERANCES UNLESS OTHERWISE SPECIFIED			
DIMENSION (inches)	TOLERANCE	DIMENSION (mm)	TOLERANCE
0-0.787	±0.006	0-20	±0.152
0.788-1.181	±0.008	21-30	±0.203
1.182-2.756	±0.012	31-70	±0.305
2.757-3.937	±0.016	71-100	±0.406
3.938-5.096	±0.020	101-150	±0.508
5.097-7.874	±0.024	151-200	±0.610
7.875-9.843	±0.032	201-250	±0.813
ANGULAR TOLERANCE ± 2°			
PROPRIETARY AND CONFIDENTIAL			
THIS DRAWING IS PROTECTED BY COPYRIGHT AND CONTAINS INFORMATION PROPRIETARY TO MOLD-RITE, WEATHERCHEM AND STULL TECHNOLOGIES. ANY REPRODUCTION, DISCLOSURE, OR USE OF ITS CONTENTS OR ANY PART THEREOF IS EXPRESSLY PROHIBITED EXCEPT AS MOLD-RITE, WEATHERCHEM AND STULL TECHNOLOGIES OTHERWISE MAY AGREE IN WRITING			

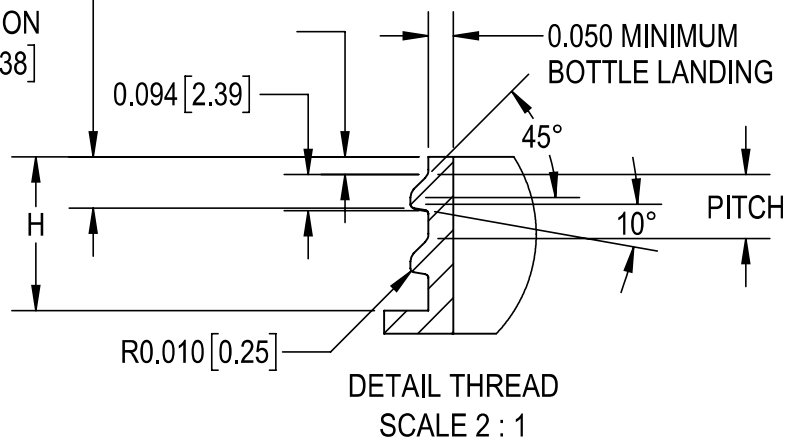
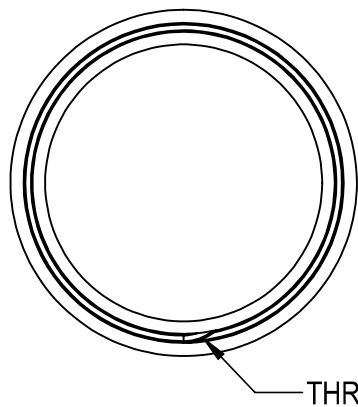


THIRD ANGLE PROJECTION	DISTRIBUTION CODE <b>D</b>	DRAWING NAME <b>43-400 CT CLOSURE S (SMOOTH SIDES, SMOOTH TOP)</b>	
		DRAWING NUMBER <b>CQA - 10742</b>	
DRAWN BY. DAS	9/6/2017	MATERIAL POLYPROPYLENE	
ENG APPR. BDG	2/11/2022	MODEL NUMBER: PM 10814 43-400 CT	
QA APPR. TEM	02/01/2022	SCALE 1:1	REV.NP 00.AC
		SHEET SIZE 8.5" X 11"	SHEET 2 of 3

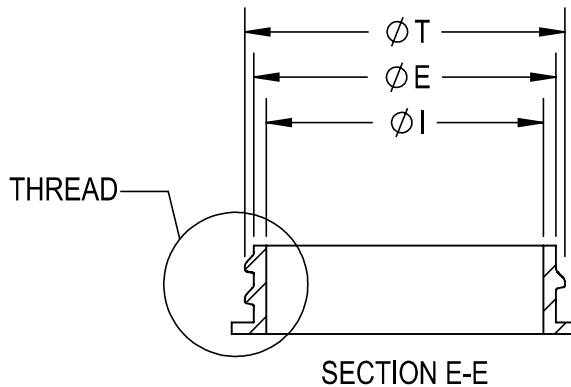
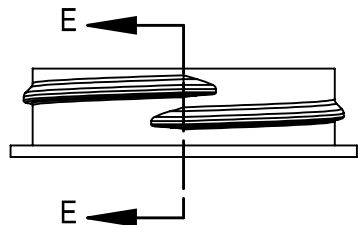
THE CLOSURE DIMENSIONS DEPICTED ARE THOSE WHICH HAVE GENERALLY BEEN FOUND TO BE FUNCTIONAL BASED ON INDUSTRY EXPERIENCE BECAUSE OF VARIABILITY IN GLASS AND PLASTIC CONTAINER FINISHES. EACH CLOSURE/FINISH SYSTEM SHOULD BE INDIVIDUALLY EVALUATED AND TESTED TO ENSURE IT MEETS APPLICABLE PERFORMANCE CRITERIA. SEE QUALITY ASSURANCE SPECIFICATIONS FOR ADDITIONAL INFORMATION.

MOLD-RITE, WEATHERCHEM AND STULL TECHNOLOGIES RESERVES THE RIGHT TO REVISE ANY OR ALL SPECIFICATIONS AND REQUIREMENTS.

CRITICAL FOR OREINTATION  
 1.001"=2° IN ROTATION  
 S' 0.133 [3.38]



DETAIL THREAD  
 SCALE 2 : 1



SECTION E-E

REFERENCE	TOLERANCE	UNITS	DIMENSION
E	±0.015 [0.38]	in [mm]	1.545 [39.24]
T	±0.015 [0.38]	in [mm]	1.639 [41.63]
I	Minimum	in [mm]	1.165 [29.59]
S	±0.015 [0.38]	in [mm]	0.046 [1.17]
H	±0.015 [0.38]	in [mm]	0.415 [10.54]
TPI			6
PITCH		in	0.167

NOTE: THE NOMINAL ORIENTATION ILLUSTRATED IS BASED ON NOMINAL DIMENSIONS OF BOTH THE CLOSURE AND THE RECOMMENDED NECK FINISH. FOR EXACT ORIENTATION EACH BOTTLE SHOULD BE EVALUATED ON A CASE BY CASE BASIS.

DRAWING TYPE : CUSTOMER

DIMENSIONS ENCLOSED IN ( ) INDICATE REFERENCE DIMENSIONS AND NO TOLERANCE LIMITS ARE ESTABLISHED

TOLERANCES UNLESS OTHERWISE SPECIFIED

DIMENSION (inches)	TOLERANCE	DIMENSION (mm)	TOLERANCE
0-0.787	±0.006	0-20	±0.152
0.788-1.181	±0.008	21-30	±0.203
1.182-2.756	±0.012	31-70	±0.305
2.757-3.937	±0.016	71-100	±0.406
3.938-5.096	±0.020	101-150	±0.508
5.097-7.874	±0.024	151-200	±0.610
7.875-9.843	±0.032	201-250	±0.813

ANGULAR TOLERANCE ± 2°

PROPRIETARY AND CONFIDENTIAL

THIS DRAWING IS PROTECTED BY COPYRIGHT AND CONTAINS INFORMATION PROPRIETARY TO MOLD-RITE, WEATHERCHEM AND STULL TECHNOLOGIES. ANY REPRODUCTION, DISCLOSURE, OR USE OF ITS CONTENTS OR ANY PART THEREOF IS EXPRESSLY PROHIBITED EXCEPT AS MOLD-RITE, WEATHERCHEM AND STULL TECHNOLOGIES OTHERWISE MAY AGREE IN WRITING



DISTRIBUTION CODE  
**D**

DRAWING NAME  
**43-400 CT CLOSURE  
 RECOMMENDED NECK FINISH**

DRAWING NUMBER  
**CQA - 10742**

DRAWN BY: DAS 9/6/2017

ENG APPR: BDG 2/1/2022

QA APPR: TEM 02/01/2022

MATERIAL

MODEL NUMBER:

SCALE	SHEET SIZE	SHEET	REV.N/P
1:1	8.5" X 11"	3 of 3	00.AC

THE CLOSURE DIMENSIONS DEPICTED ARE THOSE WHICH HAVE GENERALLY BEEN FOUND TO BE FUNCTIONAL BASED ON INDUSTRY EXPERIENCE BECAUSE OF VARIABILITY IN GLASS AND PLASTIC CONTAINER FINISHES. EACH CLOSURE/FINISH SYSTEM SHOULD BE INDIVIDUALLY EVALUATED AND TESTED TO ENSURE IT MEETS APPLICABLE PERFORMANCE CRITERIA. SEE QUALITY ASSURANCE SPECIFICATIONS FOR ADDITIONAL INFORMATION.

MOLD-RITE, WEATHERCHEM AND STULL TECHNOLOGIES RESERVES THE RIGHT TO REVISE ANY OR ALL SPECIFICATIONS AND REQUIREMENTS.