

Product Data Sheet

MRP-PP30-1 Grade

Polypropylene, Homopolymer Plastic Resin

Product Description

MRP-PP30-1 is a high flow polypropylene homopolymer resin designed for injection molding applications requiring good balance stiffness, excellent part finish, process ability, and good mold release.

Compliant to the Following Regulatory Standards:

FDA-21 CFR 177.1520(c)

EU 10/2011, EC 2002/72

RoHS

Proposition 65

CONEG/Heavy Metal


Typical Properties	Method	Typical Value	Unit
Physical			
Melt Mass-Flow Rate (MFR) (230°C/2.16 kg)	ASTM D1238	30	g/10 min
Mechanical			
Tensile Strength (50mm/min) (Yield)	ASTM D 638	33.1	MPa
Tensile Elongation (50mm/min) (Yield)	ASTM D 638	10	%
Flexural Modulus – 1% Secant (1.3 mm/min)	ASTM D790A	1380	MPa
Hardness, Rockwell R	ASTM D785	104	-
Impact			
Notched Izod impact (23 °C, Method A)	ASTM D 256A	37	J/m
Thermal			
Heat Deflection (Softening Point) Unannealed DTLU @ 66psi	ASTM D 648	91	°C
Processing Range	-----	400 – 500	°F

For further regulatory information contact Mold-Rite Plastics customer service or sales department.

Notes:

These are typical properties not to be construed as specifications.

Mold-Rite Plastics warrants this grade to meet typical data values and physical, chemical, and processing properties.

	Raw Material Product Data Sheet	
	Product Name: MRPWH01	Revision #: A
	Revision Date	03/07/2019
	Effective Date	07/01/2019

Product Name:

MRPWH01

Product Description:

FDA Compliant White colorant, intended to be used with injection-molded plastic resin

Product Data:

Additives

None

<u>Typical Properties</u>	<u>Typical Value</u>
Delta E Tolerance	Less than 2.00
Visual Evaluation	Visual match to approved color standard

<u>FDA Compliance/Status</u>		
FDA, Title 21 CFR Food & Drug Contact	<input checked="" type="checkbox"/> Compliant	<input type="checkbox"/> Not

This colorant formulation has been manufactured using FDA approved ingredients and, when used appropriately (with an FDA approved resin), will meet FDA contact applications regulated under the provisions of the Food, Drug, and Cosmetic Act (and subsequent amendments as outlined in Title 21 of the Code of Federal Regulation.

<u>Additional Compliance/Status (and amendments as of the date of this document)</u>		
Proposition 65, Safe Drinking Water and Toxic Enforcement Act	<input checked="" type="checkbox"/> Compliant	<input type="checkbox"/> Not
CONEG, Model Toxics in Packaging Legislation	<input checked="" type="checkbox"/> Compliant	<input type="checkbox"/> Not
EU 2015/863, as regards the list of restricted substances, RoHS	<input checked="" type="checkbox"/> Compliant	<input type="checkbox"/> Not

For further regulatory information, please contact Mold Rite Plastic's customer service or sales department.

This product data sheet addresses all colorants that meet the above requirements & specifications. Data was obtained from supplier product data sheets (where applicable). This data is intended to be used as a guide only. It is ultimately the customer's responsibility to determine the suitability of the material for their specific application, and to be responsible for assuring compliance with all applicable laws and regulations.



PRODUCT DATA SHEET

HS035 N/20 LD Foam

MRP Description -

(21N)HS035N/20LD.020 FOAM PRT R SFYP

PRODUCT DESCRIPTION

Description: A paper-backed aluminum foil coated with a clear heat sealable coating blend of high molecular weight ethylene and vinyl acetate copolymers on the foil, laminated to low dense polystyrene foam.

FDA Status: Complies with Federal Regulations of H.E.W., FDA, Sections 175.105, 175.300, 176.170, 176.180, 177.1350, 177.1640, 178.3010, 178.3710, and 182.1.

PHYSICAL AND CHEMICAL PROPERTIES

- | | |
|---|----------------|
| 1. Color | Aluminum |
| 2. Thickness, mils | |
| (a) Overall | 21.22 - 27.11 |
| (b) Heat Seal | 1.50 - 3.0 |
| (c) Aluminum | 0.31 - 0.38 |
| (d) Paper (N) | 1.41 - 1.73 |
| (e) Polystyrene Foam | 18.00 - 22.00 |
| 3. Basis Wt. Lbs./Ream 3000 ft² | |
| (a) Overall | 94.44 - 141.51 |
| (b) Heat Seal | 20.7 - 41.9 |
| (c) Aluminum | 13.3 - 16.2 |
| (d) Paper (N) | 20.79 - 21.21 |
| (e) Polystyrene Foam | 39.65 - 62.20 |
| 4. Heat Seal Coating | |
| (a) Melting Point °F | 150 - 160 |
| (b) Blocking Point °F | 130 - 135 |
| 5. Gas Transmission: cc/cin²/24hrs/1atm | |
| (a) Oxygen | near zero |
| 6. Water Vapor Transmission | |
| a) gm/cin ² /24 hrs/100° F/90% RH | near zero |

RECOMMENDED STORAGE CONDITIONS

The material should be stored in well ventilated area (temp. 60° - 80°F.; RH - 40% - 60%). Material and lined closures are heat sensitive. Storage or shipping temperatures should not be in excess of 105°F. Curling, blocking, splitting or foil separation may result. If material becomes chilled, it should be stored under the recommended conditions until stabilized. Avoid storing closure liner materials over 60 days. Metal foil is prone to corrosion.

SUGGESTED PRODUCT USES

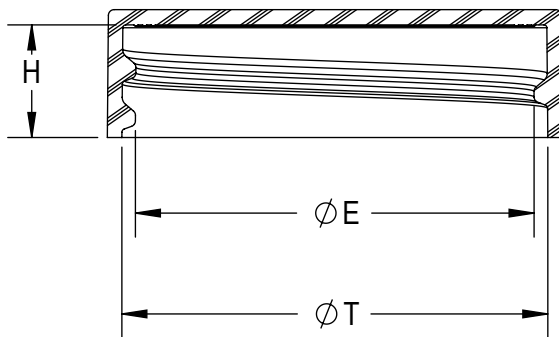
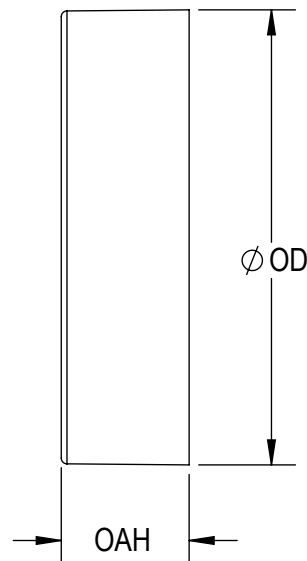
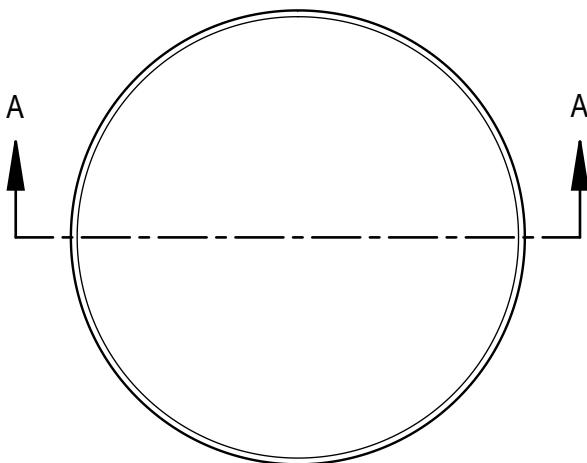
Material is a heat sealable tamper indicating innerseal which can be used for over-the-counter drug products on Polyethylene, Glass, PET, PVC, Polystyrene and Polypropylene.

Dry Products

Product applications listed above are a partial listing and do not cover all suitable applications. These are recommendations for general categories and user must test for suitability for his specific product. Not suitable for products containing oil.

The technical information and suggestions for use made herein are based on SANCAP research and experience and are believed to be reliable, but such information and suggestions do not constitute a warranty, and no patent liability can be assumed. Since SANCAP has no control over the conditions under which the product is transported, stored, handled, used or applied, buyer must determine for himself, by preliminary tests or otherwise, the suitability of the product for his purposes. All products are sold subject to SANCAP'S written warranty, which is in lieu of all other warranties or merchantability and fitness for a particular purpose. SANCAP'S liability on any basis is limited to the price of the product used.

file:HS035N/20 LDF
01/11/05



SECTION A-A

THREAD DETAIL INFORMATION
6 THREADS PER INCH, 0.167 PITCH

REFERENCE	TOLERANCE	DIMENSION	UNITS
E	±0.010 [0.25]	1.395 [35.43]	in [mm]
T	±0.010 [0.25]	1.487 [37.77]	in [mm]
H	±0.008 [0.20]	0.392 [9.96]	in [mm]
OAH	±0.008 [0.20]	0.443 [11.25]	in [mm]
OD	±0.010 [0.25]	1.576 [40.03]	in [mm]
PART WEIGHT	± 0.30	2.80	g

STATIC TORQUE RECOMMENDATION
17-26 in-lbs
THIS REQUIREMENT MAY VARY DEPENDING
UPON BOTTLE MATERIAL, NECK FINISH, AND
CAPPING EQUIPMENT

DRAWING TYPE : CUSTOMER

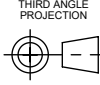
REPLACES DRAWINGS:
C-1008

DIMENSIONS ENCLOSED IN ()
INDICATE REFERENCE
DIMENSIONS AND NO TOLERANCE
LIMITS ARE ESTABLISHED

TOLERANCES UNLESS OTHERWISE SPECIFIED

DIMENSION (inches)	TOLERANCE	DIMENSION (mm)	TOLERANCE
0-0.787	±0.006	0-20	±0.152
0.788-1.181	±0.008	21-30	±0.203
1.182-2.756	±0.012	31-70	±0.305
2.757-3.937	±0.016	71-100	±0.406
3.938-5.096	±0.020	101-150	±0.508
5.097-7.874	±0.024	151-200	±0.610
7.875-9.843	±0.032	201-250	±0.813
ANGULAR TOLERANCE ± 2°			
PROPRIETARY AND CONFIDENTIAL			

THIS DRAWING IS PROTECTED BY COPYRIGHT AND CONTAINS INFORMATION
PROPRIETARY TO MOLD-RITE, WEATHERCHEM AND STULL TECHNOLOGIES.
ANY REPRODUCTION, DISCLOSURE, OR USE OF ITS CONTENTS OR ANY PART
THEREOF IS EXPRESSLY PROHIBITED EXCEPT AS MOLD-RITE, WEATHERCHEM
AND STULL TECHNOLOGIES OTHERWISE MAY AGREE IN WRITING



DISTRIBUTION
CODE
D

DRAWING NAME
38-400 CT CLOSURE
S (Smooth - Smooth)

DRAWING NUMBER
CQA - 10014

MATERIAL
POLYPROPYLENE

MODEL NUMBER:
PM 10498 38-400 CT

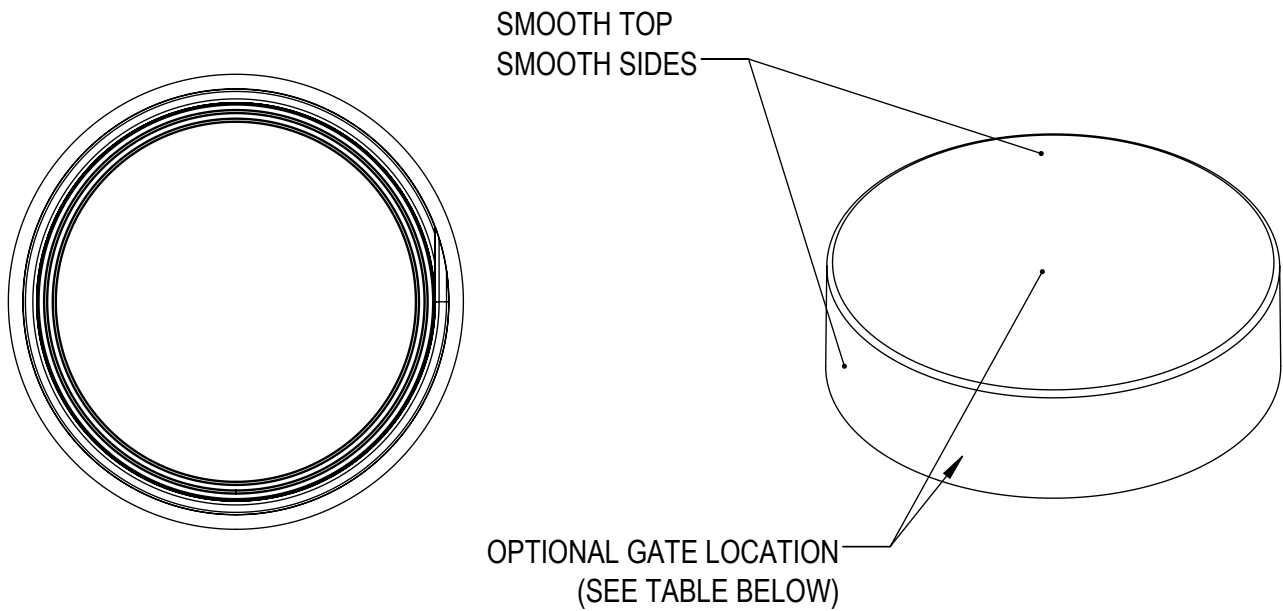
DRAWN BY.	DAS	4/12/2017
ENG APPR.	JDM	3/21/2018
QA APPR.	REL	03/22/2018

SCALE	SHEET SIZE	SHEET	REV.NP
3:2	8.5in*11in	1 of 3	00.AC

THE CLOSURE DIMENSIONS
DEPICTED ARE THOSE WHICH HAVE GENERALLY BEEN
FOUND TO BE FUNCTIONAL BASED ON INDUSTRY
EXPERIENCE BECAUSE OF VARIABILITY IN GLASS AND
PLASTIC CONTAINER FINISHES, EACH CLOSURE/FINISH
SYSTEM SHOULD BE INDIVIDUALLY EVALUATED AND
TESTED TO ENSURE IT MEETS APPLICABLE
PERFORMANCE CRITERIA. SEE QUALITY ASSURANCE
SPECIFICATIONS FOR ADDITIONAL INFORMATION.

MOLD-RITE, WEATHERCHEM AND STULL TECHNOLOGIES
RESERVES THE RIGHT TO REVISE ANY OR ALL
SPECIFICATIONS AND REQUIREMENTS.

REVISIONS					
DATE	REV.	N/P	DESCRIPTION	ENG	DRW
2/26/2014	00	AA	INITIAL RELEASE	CM	LB
4/12/2017	00	AB	UPDATED DRAWING FORMAT	JDM	DAS
11/21/2017	00	AC	CORRECTED NOMINAL FOR OAH AND OD	JDM	JDM



MOLD NUMBER	GATE LOCATION
38011	SIDE
38012	SIDE
38017	TOP CENTER
38024	SIDE
38025	TOP CENTER
38030	TOP CENTER

THE CLOSURE DIMENSIONS DEPICTED ARE THOSE WHICH HAVE GENERALLY BEEN FOUND TO BE FUNCTIONAL BASED ON INDUSTRY EXPERIENCE BECAUSE OF VARIABILITY IN GLASS AND PLASTIC CONTAINER FINISHES, EACH CLOSURE/FINISH SYSTEM SHOULD BE INDIVIDUALLY EVALUATED AND TESTED TO ENSURE IT MEETS APPLICABLE PERFORMANCE CRITERIA. SEE QUALITY ASSURANCE SPECIFICATIONS FOR ADDITIONAL INFORMATION.

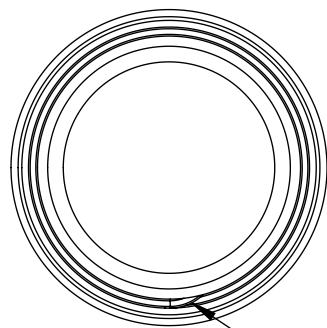
MOLD-RITE, WEATHERCHEM AND STULL TECHNOLOGIES RESERVES THE RIGHT TO REVISE ANY OR ALL SPECIFICATIONS AND REQUIREMENTS.

DRAWING TYPE : CUSTOMER

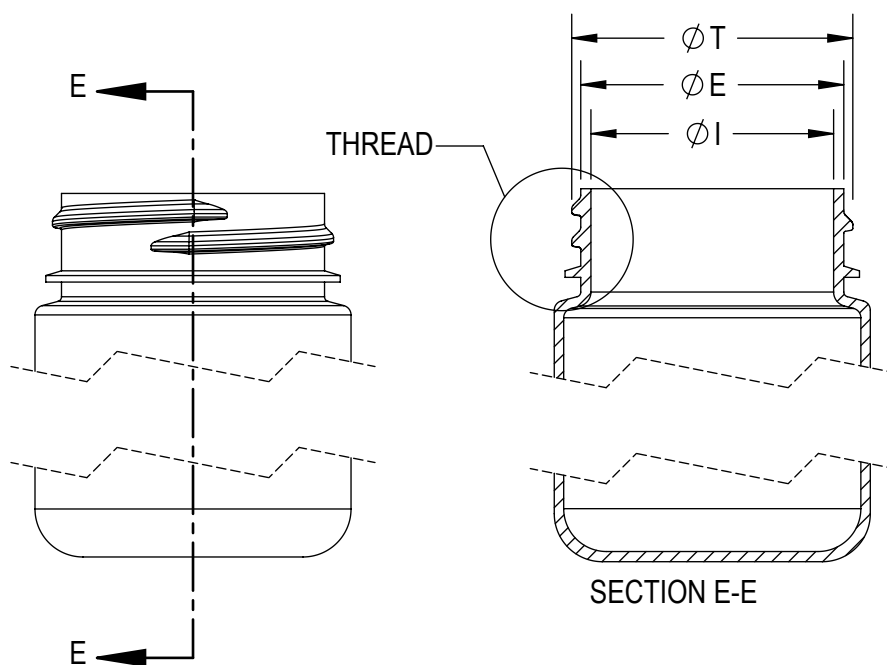
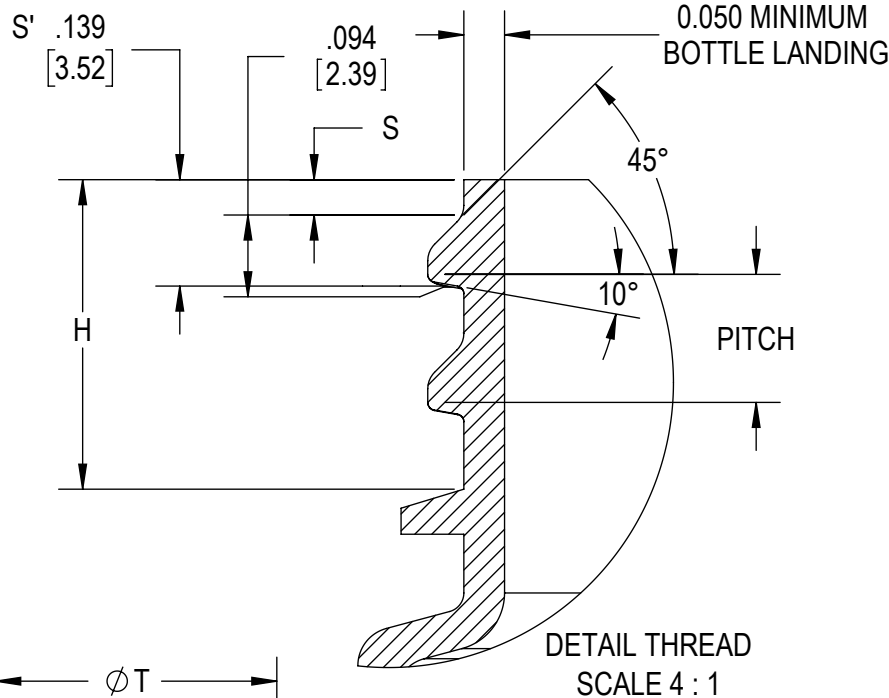
REFERENCES: 38011, 38012, 38017, 38024, 38025	DIMENSIONS ENCLOSED IN () INDICATE REFERENCE DIMENSIONS AND NO TOLERANCE LIMITS ARE ESTABLISHED		
TOLERANCES UNLESS OTHERWISE SPECIFIED			
DIMENSION (inches)	TOLERANCE	DIMENSION (mm)	TOLERANCE
0-0.787	±0.006	0-20	±0.152
0.788-1.181	±0.008	21-30	±0.203
1.182-2.756	±0.012	31-70	±0.305
2.757-3.937	±0.016	71-100	±0.406
3.938-5.096	±0.020	101-150	±0.508
5.097-7.874	±0.024	151-200	±0.610
7.875-9.843	±0.032	201-250	±0.813
ANGULAR TOLERANCE ± 2°			
PROPRIETARY AND CONFIDENTIAL			
THIS DRAWING IS PROTECTED BY COPYRIGHT AND CONTAINS INFORMATION PROPRIETARY TO MOLD-RITE, WEATHERCHEM AND STULL TECHNOLOGIES. ANY REPRODUCTION, DISCLOSURE, OR USE OF ITS CONTENTS OR ANY PART THEREOF IS EXPRESSLY PROHIBITED EXCEPT AS MOLD-RITE, WEATHERCHEM AND STULL TECHNOLOGIES OTHERWISE MAY AGREE IN WRITING			

MOLD-RITE PLASTICS®
Innovative • Reliable • Responsive

THIRD ANGLE PROJECTION	DISTRIBUTION CODE D	DRAWING NAME 38-400 CT CLOSURE S (Smooth - Smooth)	
DRAWN BY: DAS 4/12/2017		DRAWING NUMBER CQA - 10014	
ENG APPR: JDM 3/21/2018		MATERIAL POLYPROPYLENE	
QA APPR: REL 03/22/2018		MODEL NUMBER: PM 10498 38-400 CT	
SCALE 3:2	SHEET SIZE 8.5 X 11	SHEET 2 of 3	REV.NP 00



THREAD START



SECTION E-E

REFERENCE	TOLERANCE	UNITS	DIMENSIONS
E	±0.012 [0.30]	in [mm]	1.370 [34.80]
T	±0.012 [0.30]	in [mm]	1.464 [37.19]
I	MINIMUM	in [mm]	0.987 [25.07]
S	±0.015 [0.38]	in [mm]	0.046 [1.17]
H	MINIMUM	in [mm]	0.403 [10.24]
TPI			6
PITCH		in	0.167 [4.24]

NOTE: THE NOMINAL ORIENTATION ILLUSTRATED IS BASED ON NOMINAL DIMENSIONS OF BOTH THE CLOSURE AND THE RECOMMENDED NECK FINISH. FOR EXACT ORIENTATION EACH BOTTLE SHOULD BE EVALUATED ON A CASE BY CASE BASIS.

THE CLOSURE DIMENSIONS DEPICTED ARE THOSE WHICH HAVE GENERALLY BEEN FOUND TO BE FUNCTIONAL BASED ON INDUSTRY EXPERIENCE BECAUSE OF VARIABILITY IN GLASS AND PLASTIC CONTAINER FINISHES, EACH CLOSURE/FINISH SYSTEM SHOULD BE INDIVIDUALLY EVALUATED AND TESTED TO ENSURE IT MEETS APPLICABLE PERFORMANCE CRITERIA. SEE QUALITY ASSURANCE SPECIFICATIONS FOR ADDITIONAL INFORMATION.

MOLD-RITE, WEATHERCHEM AND STULL TECHNOLOGIES RESERVES THE RIGHT TO REVISE ANY OR ALL SPECIFICATIONS AND REQUIREMENTS.

DRAWING TYPE : CUSTOMER

DIMENSIONS ENCLOSED IN () INDICATE REFERENCE DIMENSIONS AND NO TOLERANCE LIMITS ARE ESTABLISHED

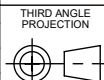
TOLERANCES UNLESS OTHERWISE SPECIFIED

DIMENSION (inches)	TOLERANCE	DIMENSION (mm)	TOLERANCE
0-0.787	±0.006	0-20	±0.152
0.788-1.181	±0.008	21-30	±0.203
1.182-2.756	±0.012	31-70	±0.305
2.757-3.937	±0.016	71-100	±0.406
3.938-5.096	±0.020	101-150	±0.508
5.097-7.874	±0.024	151-200	±0.610
7.875-9.843	±0.032	201-250	±0.813

ANGULAR TOLERANCE ± 2°

PROPRIETARY AND CONFIDENTIAL

THIS DRAWING IS PROTECTED BY COPYRIGHT AND CONTAINS INFORMATION PROPRIETARY TO MOLD-RITE, WEATHERCHEM AND STULL TECHNOLOGIES. ANY REPRODUCTION, DISCLOSURE, OR USE OF ITS CONTENTS OR ANY PART THEREOF IS EXPRESSLY PROHIBITED EXCEPT AS MOLD-RITE, WEATHERCHEM AND STULL TECHNOLOGIES OTHERWISE MAY AGREE IN WRITING



DRAWN BY.

DAS

DISTRIBUTION CODE

D

ENG APPR.

JDM

QA APPR.

REL

DATE

3/21/2018

DATE

03/22/2018

DRAWING NAME

38-400 CT CLOSURE
RECOMMENDED NECK FINISH

DRAWING NUMBER

CQA - 10014

MATERIAL

MODEL NUMBER:

SCALE
1:1

SHEET SIZE
8.5 X 11

SHEET
3 of 3

REV/N/P
00.AC