

SECTION A-A
SCALE 1.5 : 1

THREAD DETAIL INFORMATION
6 THREADS PER INCH, 0.167 PITCH
360° FULL DEPTH THREAD

REFERENCE	TOLERANCE	DIMENSION	UNITS
E	±0.010 [0.25]	1.788 [45.42]	in [mm]
T	±0.010 [0.25]	1.880 [47.75]	in [mm]
H	±0.010 [0.25]	0.390 [9.91]	in [mm]
OAH	±0.010 [0.25]	0.446 [11.32]	in [mm]
BOTTOM OD	±0.012 [0.30]	1.980 [50.29]	in [mm]
PART WEIGHT	± 1.0	3.8	g

STATIC TORQUE RECOMMENDATION
19-30 in-lbs
THIS REQUIREMENT MAY VARY DEPENDING UPON BOTTLE MATERIAL, NECK FINISH, AND CAPPING EQUIPMENT

THE CLOSURE DIMENSIONS DEPICTED ARE THOSE WHICH HAVE GENERALLY BEEN FOUND TO BE FUNCTIONAL BASED ON INDUSTRY EXPERIENCE BECAUSE OF VARIABILITY IN GLASS AND PLASTIC CONTAINER FINISHES, EACH CLOSURE/FINISH SYSTEM SHOULD BE INDIVIDUALLY EVALUATED AND TESTED TO ENSURE IT MEETS APPLICABLE PERFORMANCE CRITERIA. SEE QUALITY ASSURANCE SPECIFICATIONS FOR ADDITIONAL INFORMATION.

MOLD-RITE, WEATHERCHEM AND STULL TECHNOLOGIES RESERVES THE RIGHT TO REVISE ANY OR ALL SPECIFICATIONS AND REQUIREMENTS.

DRAWING TYPE : **CUSTOMER**

REPLACES DRAWINGS:
C-1011

DIMENSIONS ENCLOSED IN () INDICATE REFERENCE DIMENSIONS AND NO TOLERANCE LIMITS ARE ESTABLISHED

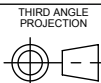
TOLERANCES UNLESS OTHERWISE SPECIFIED

DIMENSION (inches)	TOLERANCE	DIMENSION (mm)	TOLERANCE
0-0.787	±0.006	0-20	±0.152
0.788-1.181	±0.008	21-30	±0.203
1.182-2.756	±0.012	31-70	±0.305
2.757-3.937	±0.016	71-100	±0.406
3.938-5.096	±0.020	101-150	±0.508
5.097-7.874	±0.024	151-200	±0.610
7.875-9.843	±0.032	201-250	±0.813

ANGULAR TOLERANCE ± 2°

PROPRIETARY AND CONFIDENTIAL

THIS DRAWING IS PROTECTED BY COPYRIGHT AND CONTAINS INFORMATION PROPRIETARY TO MOLD-RITE, WEATHERCHEM AND STULL TECHNOLOGIES. ANY REPRODUCTION, DISCLOSURE, OR USE OF ITS CONTENTS OR ANY PART THEREOF IS EXPRESSLY PROHIBITED EXCEPT AS MOLD-RITE, WEATHERCHEM AND STULL TECHNOLOGIES OTHERWISE MAY AGREE IN WRITING



SOLIDWORKS

DISTRIBUTION CODE

D

DRAWING NAME

48-400 CT Closure
S (Smooth Side-Smooth Top)

DRAWING NUMBER

CQA - 10329

MATERIAL

POLYPROPYLENE

DRAWN BY.

JDM

8/17/2016

ENG APPR.

JDM

10/18/2016

QA APPR.

ACP

10/18/2016

MODEL NUMBER

PM 10328 48-400 CT

SCALE

3:2

SHEET SIZE

8.5in*11in

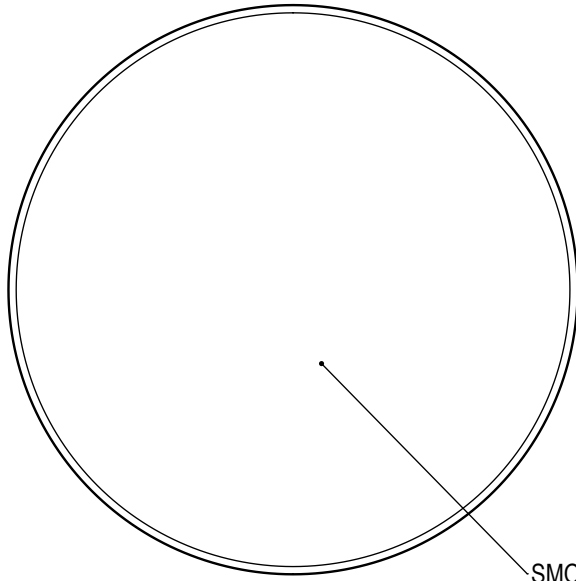
SHEET

1 of 3

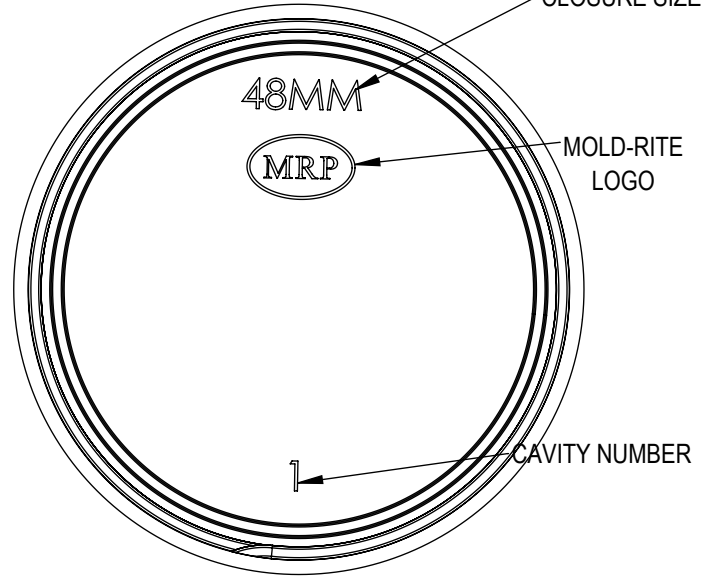
REV.NP

00.AA

REVISIONS					
DATE	REV.	N/P	DESCRIPTION	ENG	DRW
8/18/2016	00	AA	REDRAWN IN NEW FORMAT - SEE C-1011 FOR REVISION HISTORY. CORRECTED "OAH" DIMENSION FROM HISTORICAL DATA REVIEW TO 0.446" (WAS 0.465")	JDM	JDM



SMOOTH FINISH



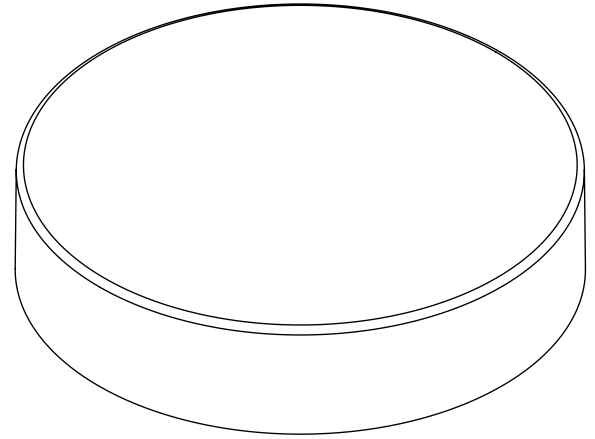
CLOSURE SIZE

48MM

MRP

MOLD-RITE LOGO

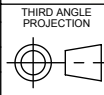
CAVITY NUMBER



DRAWING TYPE : CUSTOMER			
REFERENCES: 48001, 48003, 48004		DIMENSIONS ENCLOSED IN () INDICATE REFERENCE DIMENSIONS AND NO TOLERANCE LIMITS ARE ESTABLISHED	
TOLERANCES UNLESS OTHERWISE SPECIFIED			
DIMENSION (inches)	TOLERANCE	DIMENSION (mm)	TOLERANCE
0-0.787	±0.006	0-20	±0.152
0.788-1.181	±0.008	21-30	±0.203
1.182-2.756	±0.012	31-70	±0.305
2.757-3.937	±0.016	71-100	±0.406
3.938-5.096	±0.020	101-150	±0.508
5.097-7.874	±0.024	151-200	±0.610
7.875-9.843	±0.032	201-250	±0.813
ANGULAR TOLERANCE ± 2°			
PROPRIETARY AND CONFIDENTIAL			
THIS DRAWING IS PROTECTED BY COPYRIGHT AND CONTAINS INFORMATION PROPRIETARY TO MOLD-RITE, WEATHERCHEM AND STULL TECHNOLOGIES. ANY REPRODUCTION, DISCLOSURE, OR USE OF ITS CONTENTS OR ANY PART THEREOF IS EXPRESSLY PROHIBITED EXCEPT AS MOLD-RITE, WEATHERCHEM AND STULL TECHNOLOGIES OTHERWISE MAY AGREE IN WRITING			

THE CLOSURE DIMENSIONS
DEPICTED ARE THOSE WHICH HAVE GENERALLY BEEN
FOUND TO BE FUNCTIONAL BASED ON INDUSTRY
EXPERIENCE BECAUSE OF VARIABILITY IN GLASS AND
PLASTIC CONTAINER FINISHES. EACH CLOSURE/FINISH
SYSTEM SHOULD BE INDIVIDUALLY EVALUATED AND
TESTED TO ENSURE IT MEETS APPLICABLE
PERFORMANCE CRITERIA. SEE QUALITY ASSURANCE
SPECIFICATIONS FOR ADDITIONAL INFORMATION.

MOLD-RITE, WEATHERCHEM AND STULL TECHNOLOGIES
RESERVES THE RIGHT TO REVISE ANY OR ALL
SPECIFICATIONS AND REQUIREMENTS.



SOLIDWORKS

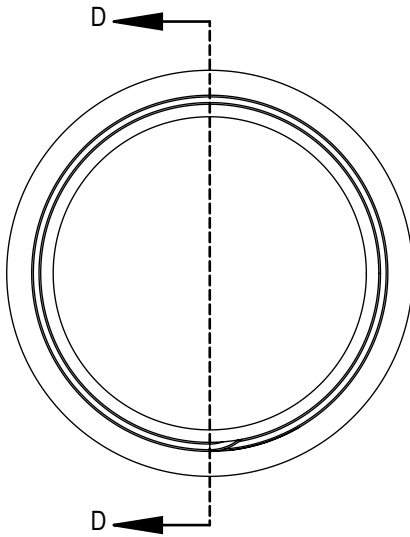
DISTRIBUTION
CODE
D

DRAWING NAME		48-400 CT Closure S (Smooth Side-Smooth Top)	
DRAWING NUMBER		CQA - 10329	
MATERIAL		POLYPROPYLENE	
MODEL NUMBER		PM 10328 48-400 CT	
SCALE	SHEET SIZE	SHEET	REV.NP
3:2	8.5in*11in	2 of 3	00.AA

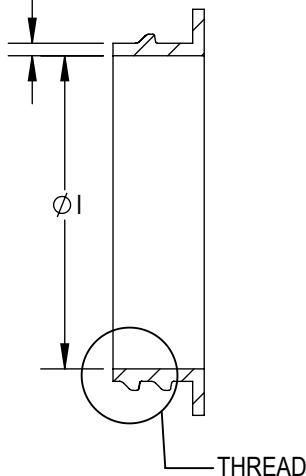
DRAWN BY.	JDM	8/17/2016
ENG APPR.	JDM	10/18/2016
QA APPR.	ACP	10/18/2016

RECOMMENDED NECK FINISH

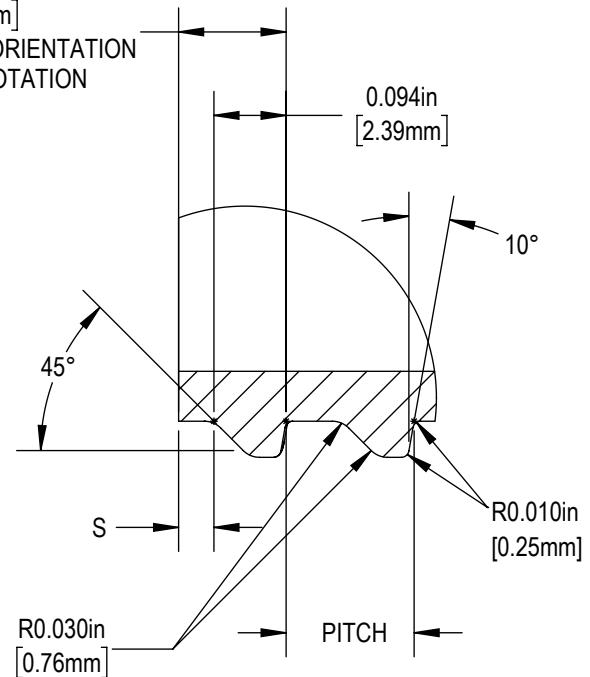
0.050 [1.27] MINIMUM RECOMMENDED FLAT FOR PROPER INDUCTION SEAL



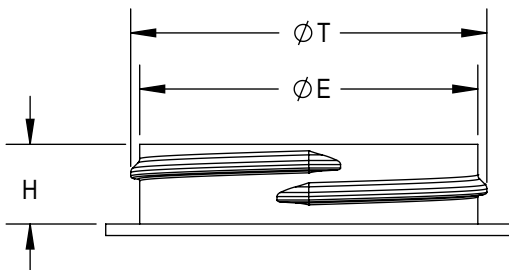
0.140in [3.56mm]
S' - CRITICAL TO ORIENTATION
0.001" = 2° ROTATION



SECTION D-D
SCALE 1 : 1



DETAIL THREAD
SCALE 4 : 1



REFERENCE	TOLERANCE	UNITS	DIMENSION
E	±0.015 [0.38]	in [mm]	1.761 [44.73]
T	±0.015 [0.38]	in [mm]	1.855 [47.12]
I	MINIMUM	in [mm]	1.631 [41.43]
H	MINIMUM (WITHOUT LINER)	in [mm]	0.390 [9.91]
S	±0.015 [0.38]	in [mm]	0.046 [1.17]
TPI			6
PITCH		in [mm]	0.167 [4.24]

NOTE: THE NOMINAL ORIENTATION ILLUSTRATED IS BASED ON NOMINAL DIMENSIONS OF BOTH THE CLOSURE AND THE RECOMMENDED NECK FINISH. FOR EXACT ORIENTATION EACH BOTTLE SHOULD BE EVALUATED ON A CASE BY CASE BASIS.

DRAWING TYPE : CUSTOMER

DIMENSIONS ENCLOSED IN () INDICATE REFERENCE DIMENSIONS AND NO TOLERANCE LIMITS ARE ESTABLISHED

TOLERANCES UNLESS OTHERWISE SPECIFIED

DIMENSION (inches)	TOLERANCE	DIMENSION (mm)	TOLERANCE
0-0.787	±0.006	0-20	±0.152
0.788-1.181	±0.008	21-30	±0.203
1.182-2.756	±0.012	31-70	±0.305
2.757-3.937	±0.016	71-100	±0.406
3.938-5.096	±0.020	101-150	±0.508
5.097-7.874	±0.024	151-200	±0.610
7.875-9.843	±0.032	201-250	±0.813

ANGULAR TOLERANCE ± 2°

PROPRIETARY AND CONFIDENTIAL

THIS DRAWING IS PROTECTED BY COPYRIGHT AND CONTAINS INFORMATION PROPRIETARY TO MOLD-RITE, WEATHERCHEM AND STULL TECHNOLOGIES. ANY REPRODUCTION, DISCLOSURE, OR USE OF ITS CONTENTS OR ANY PART THEREOF IS EXPRESSLY PROHIBITED EXCEPT AS MOLD-RITE, WEATHERCHEM AND STULL TECHNOLOGIES OTHERWISE MAY AGREE IN WRITING



DISTRIBUTION CODE

D

DRAWING NAME

48-400 CT Closure RNF

DRAWING NUMBER

CQA - 10329

DRAWN BY: JDM

8/17/2016

MATERIAL

ENG APPR: JDM

10/18/2016

MODEL NUMBER:

QA APPR: ACP

10/18/2016

SCALE

1:1

SHEET SIZE

8.5in*11in

SHEET

3 of 3

REV/N/P

00.AA

THE CLOSURE DIMENSIONS DEPICTED ARE THOSE WHICH HAVE GENERALLY BEEN FOUND TO BE FUNCTIONAL BASED ON INDUSTRY EXPERIENCE BECAUSE OF VARIABILITY IN GLASS AND PLASTIC CONTAINER FINISHES, EACH CLOSURE/FINISH SYSTEM SHOULD BE INDIVIDUALLY EVALUATED AND TESTED TO ENSURE IT MEETS APPLICABLE PERFORMANCE CRITERIA. SEE QUALITY ASSURANCE SPECIFICATIONS FOR ADDITIONAL INFORMATION.

MOLD-RITE, WEATHERCHEM AND STULL TECHNOLOGIES RESERVES THE RIGHT TO REVISE ANY OR ALL SPECIFICATIONS AND REQUIREMENTS.



Liner Product Data Sheet

Title: (025)MRPLN01 PE FOAM.035" PL

Description of Product: Three Ply Low Density Polyethylene Liner

Detailed Product Description: This product is a three ply liner consisting of foamed Low Density Polyethylene core between two solid layers of Low Density Polyethylene.



Regulatory Compliance:

- 21 CFR 175.300 Resinous and Polymeric Coatings.
- 21 CFR 177.1210 Closures with sealing gaskets for food containers.
- 21 CFR 177.1520 Olefin Polymers.
- California Proposition 65 Labeling Requirements
- CONEG
- EU 94/62/EC, Article 11

Typical Properties: This specification, designated by Mold-Rite Plastics, includes all liners that meet the typical value data listed below:

Typical Properties	Typical Value
Overall Thickness <ul style="list-style-type: none"> • Solid Polyethylene • Polyethylene Foam • Solid Polyethylene 	0.035 inches +/- 10% <ul style="list-style-type: none"> • - • 0.035 inches • -
Drug Master File	16574
Printed	N/A
Print Color	N/A

Disclaimers:

1. These are typical properties.
2. All data values and regulatory requirements were obtained from manufacturer product data sheets (where applicable).
3. Product data sheets data are intended as a general guide only and do not necessarily represent results that may be obtained elsewhere.
4. Use of Mold-Rite Plastics products must be guided by users' methods for selection of proper formulation.
5. Mold-Rite Plastics disclaims any responsibility for misuse or misapplication of its products.
6. Mold-Rite Plastics liability and customer's exclusive remedy for any claims arising out of sales of its products are expressly limited at: customer option for replacement not to exceed the purchase price plus transportation charges thereon.