

## Technical Data Sheet

### *Petrothene* LR734046



High Density Polyethylene

#### Product Description

*Petrothene* LR734046 is a high density polyethylene resin that exhibits good stiffness and environmental stress crack resistance. This product contains stearate as a core rod release for the injection-blow molding process. Typical applications include bottles for household chemicals, food products, and personal care products.

#### Regulatory Status

For regulatory compliance information, see *Petrothene* LR734046 [Product Stewardship Bulletin \(PSB\)](#) and [Safety Data Sheet \(SDS\)](#).

<b>Status</b>	Commercial: Active
<b>Availability</b>	North America
<b>Application</b>	Bottles and Vials
<b>Market</b>	Rigid Packaging
<b>Processing Method</b>	Injection Blow Molding
<b>Attribute</b>	Excellent Processability

Typical Properties	Nominal Value	English Units	Nominal Value	SI Units	Test Method
<b>Physical</b>					
Melt Flow Rate, (190 °C/2.16 kg)	0.38	g/10 min	0.38	g/10 min	ASTM D1238
Density, (23 °C)	0.953	g/cm <sup>3</sup>	0.953	g/cm <sup>3</sup>	ASTM D1505
<b>Mechanical</b>					
Flexural Modulus, (1% Secant)	176000	psi	1210	MPa	ASTM D790
Tensile Strength at Yield	4000	psi	27.6	MPa	ASTM D638
Tensile Elongation at Break	>500	%	>500	%	ASTM D638
Environmental Stress Crack Resistance, F <sub>50</sub> (100% Igepal®, Cond B)	25	hr	25	hr	ASTM D1693
<b>Impact</b>					
Tensile Impact Strength	131	ft-lb/in <sup>2</sup>	275	kJ/m <sup>2</sup>	ASTM D1822
<b>Hardness</b>					
Shore Hardness, (Shore D)	67		67		ASTM D2240
<b>Thermal</b>					
Vicat Softening Temperature	261	°F	127	°C	ASTM D1525
Low Temperature Brittleness, F <sub>50</sub>	<-105	°F	<-76	°C	ASTM D746
Deflection Temperature Under Load, (66 psi, Unannealed)	167	°F	75	°C	ASTM D648
<b>Additive</b>					
Stearate As core rod release agent	Medium		Medium		LYB Method

## Notes

Igepal® is a registered trademark of Rhodia.

These are typical property values not to be construed as specification limits.

## Processing Techniques

Specific recommendations for resin type and processing conditions can only be made when the end use, required properties and fabrication equipment are known.

## Company Information

For further information regarding the LyondellBasell company, please visit <http://www.lyb.com/>.

© LyondellBasell Industries Holdings, B.V. 2018

## Disclaimer

Information in this document is accurate to the best of our knowledge at the date of publication. The document is designed to provide users general information for safe handling, use, processing, storage, transportation, disposal and release and does not constitute any warranty or quality specification, either express or implied, including any warranty of merchantability or fitness for any particular purpose. Users shall determine whether the product is suitable for their use and can be used safely and legally.

In addition to any prohibitions of use specifically noted in this document, LyondellBasell may further prohibit or restrict the sale of its products into certain applications. For further information, please contact a LyondellBasell representative.

## Trademarks

The Trademark referenced within the product name is owned or used by the LyondellBasell family of companies.



**Plastics Color Corporation**

www.plasticscolor.com

## **NC 1175C WHITE**

**BASE RESIN:** LDPE/LLDPE COMBINATION

**MELT INDEX:** 4 - 12gms/10mins.....ASTM-D-1238 (E)

**DENSITY:** .916 - .926gms/cm<sup>3</sup>.....ASTM D-1505

**CONCENTRATE:**

**MELT INDEX:** 4 - 8gms/10mins.....ASTM D 1238 (E)

**BULK DENSITY:** 45 - 51lbs/cu.ft.....ASTM D-1895-67 (B)

**PERCENT LOADING:** 51.5% ± 2% (Formulated)

**U.V. STABILIZER:** None Added

**MOISTURE ANALYSIS:** .5% Maximum.....Elec. Moisture Analyzer

**F.D.A STATUS:** ACCEPTABLE FOR FOOD CONTACT APPLICATIONS

**PELLET SPECIFICATION:** 1/8 Strand or Underwater Cut Pellet

**PROCESSING:** This material is considered to be thermally stable in the normal and customary processing range of 350° - 450° F. Extended polymer and concentrate residence time in the process equipment may require that process temperature profiles be reviewed and/or adjusted to insure a proper and suitable product.

Date: January 29, 2014

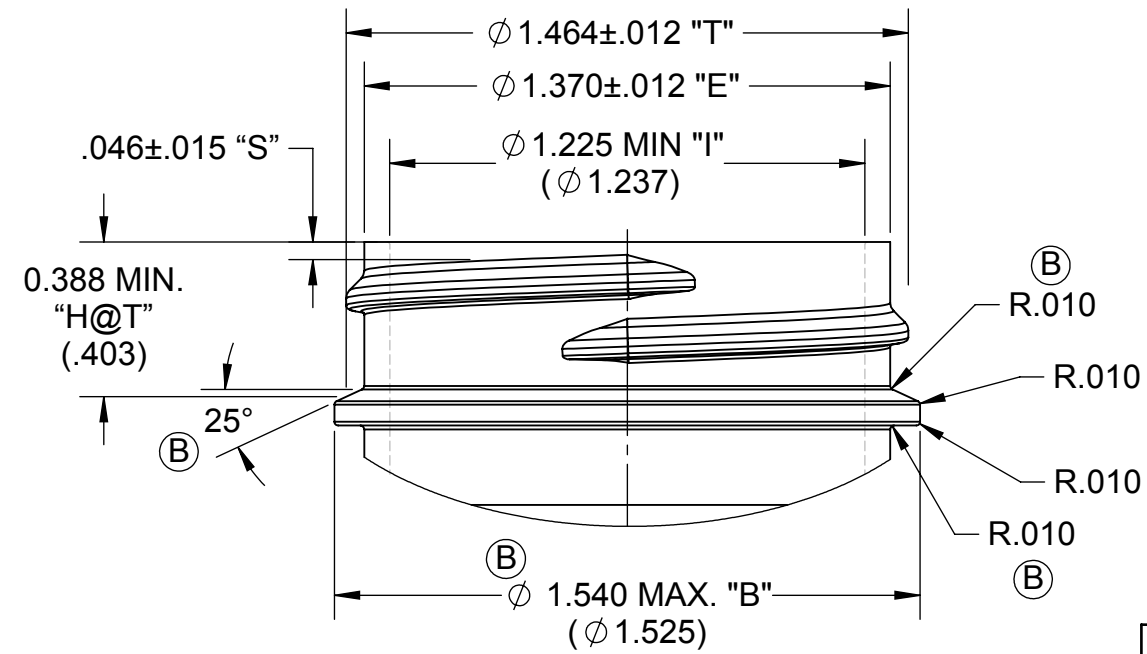
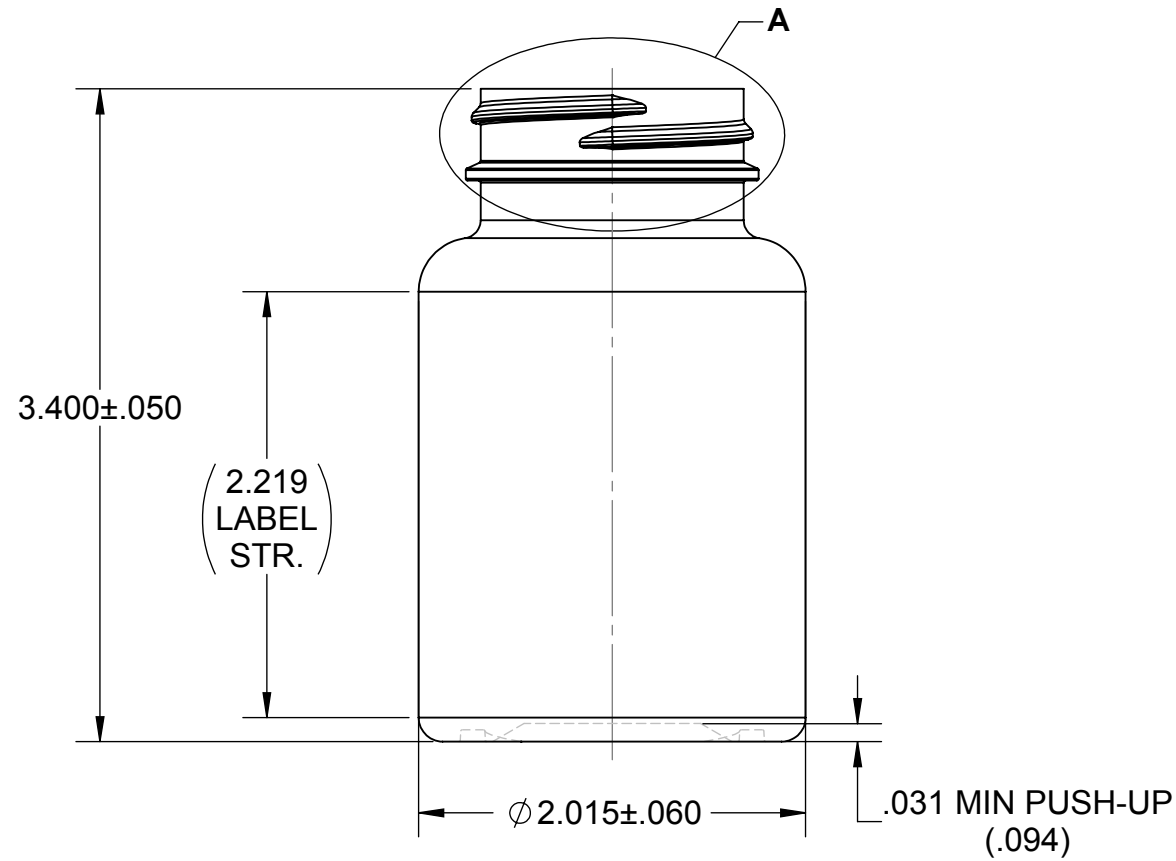
**PLASTICS COLOR CORPORATION OF NORTH CAROLINA**

1134 Highway 49 South • Asheboro, NC 27205 • 336-629-9184 • 800-247-7428 • Fax: 336-629-8234

NOTES: ©

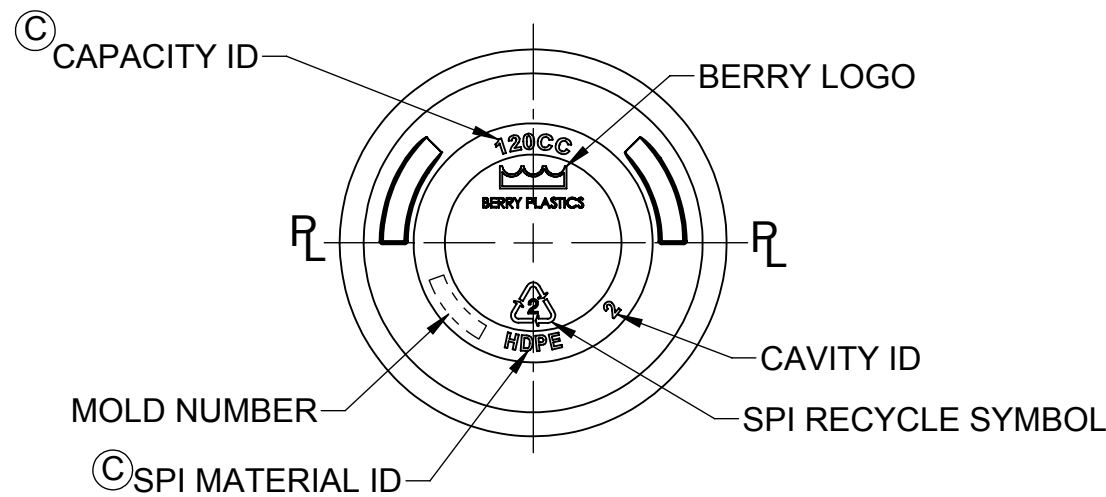
- DO NOT SCALE DRAWING
- ALL NECK FINISH DIAMETER DIMENSIONS ARE THE AVERAGE OF TWO MEASUREMENTS TAKEN ACROSS THE MAJOR AND MINOR AXES. THE LIMITS OF OVALITY ARE (.029)
- MIN WALL THICKNESS THRU LABEL PANEL TO BE .020
- THIS DRAWING SUPERSEDES FORMER SETCO DRAWING #'S D07-030 & D96-47

LET	REVISION DESCRIPTION	BY	ECN #	DATE
A	RELEASED TO WINDCHILL	RL	25120001	2/9/2012
B	141.0 CC WAS 139.3 CC, 1.540 WAS 1.537, R.010 WAS R.047, R.010 WAS R.005, ADDED 25°, ADDED SPEC. NOTE, DELETED PRELIMINARY NOTE IN THE TITLE BLOCK	BR	25120001-1	5/21/2012
C	REVISED NOTES, UPDATED BOTTOM VIEW LABELS, RELEASED FOR PRODUCTION	KRM	25120001-2	6/5/2012

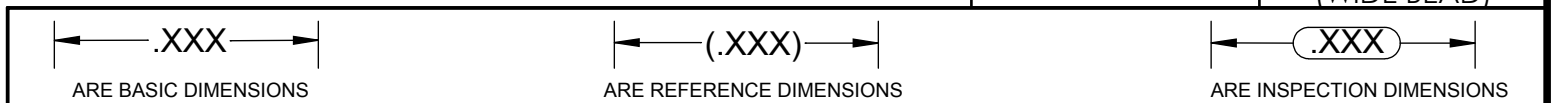


DETAIL A  
SCALE 2 : 1

PART DATA	
MATERIAL	HDPE
ESTIMATED WEIGHT	13.3g ± 1.0g
OVERFLOW CAPACITY	141.0cc ± 5cc
NECK FINISH	M38SP400 (WIDE BEAD)



© SPECIFICATIONS ON THIS DRAWING ARE APPLICABLE TO ALL J23 SERIES MOLD SETS. ©



THIS DRAWING IS NOT A CONTROLLED DOCUMENT IF PRINTED OR COPIED FROM THE APPROVED LOCATION

THIS DRAWING HAS BEEN RELEASED FOR PRODUCTION.

TOLERANCE UNLESS SPECIFIED
xxx +/- .031
xx +/- .063
x +/- .094
Fractional +/- 1/8"
Angles +/- 1/2°

**BERRY**  
PLASTICS CORPORATION  
AND SUBSIDIARIES  
LEADERSHIP BY DESIGN  
101 OAKLEY STREET  
EVANSVILLE,  
INDIANA 47706  
TEL. (812) 424-2904

CONFIDENTIAL					
PRODUCT NAME: <b>B38PS120H</b>			DRAWING TYPE: <b>CUSTOMER</b>		
DESCRIPTION: 120cc PACKER					
DRAWING NO: CP-120129-PRT01			PROJECT #: 120129		
LAST MODIFIED BY AND DATE: kmcwilliams - 6/5/2012 4:36:11 PM	CREATED BY: R.LIKA	CREATION DATE: 02/09/12	SHEET 1 of 1	DRAWING VERSION: C.2	SCALE: 1:1
		SHEET SIZE B			