

SECTION A-A

.167 PITCH - 6 THREADS PER INCH  
495° FULL DEPTH THREAD

	TOLERANCE	UNITS	
<b>E</b>	±0.012 [0.30]	in [mm]	2.664 [67.67]
<b>T</b>	±0.011 [0.28]	in [mm]	2.746 [69.75]
<b>H (Inner)</b>	±0.007 [0.18]	in [mm]	0.382 [9.70]
<b>H (Seated)</b>	MINIMUM	in [mm]	0.509 [12.93]
<b>OD</b>	±0.010 [0.25]	in [mm]	3.038 [77.17]
<b>OAH</b>	±0.010 [0.25]	in [mm]	0.664 [16.87]
<b>PART WEIGHT (ASSEMBLY)</b>	±2.1	g	19.0

**STATIC TORQUE RECOMMENDATION**  
28-50 in-lbs  
THIS REQUIREMENT MAY VARY DEPENDING UPON BOTTLE MATERIAL, NECK FINISH, AND CAPPING EQUIPMENT

THE CLOSURE DIMENSIONS DEPICTED ARE THOSE WHICH HAVE GENERALLY BEEN FOUND TO BE FUNCTIONAL BASED ON INDUSTRY EXPERIENCE BECAUSE OF VARIABILITY IN GLASS AND PLASTIC CONTAINER FINISHES, EACH CLOSURE/FINISH SYSTEM SHOULD BE INDIVIDUALLY EVALUATED AND TESTED TO ENSURE IT MEETS APPLICABLE PERFORMANCE CRITERIA. SEE QUALITY ASSURANCE SPECIFICATIONS FOR ADDITIONAL INFORMATION.

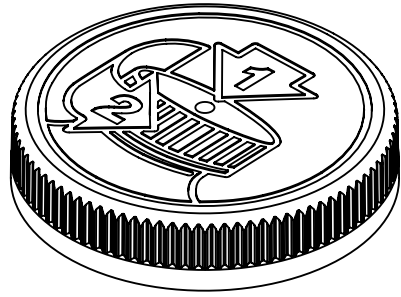
**MOLD-RITE, WEATHERCHEM AND STULL TECHNOLOGIES RESERVES THE RIGHT TO REVISE ANY OR ALL SPECIFICATIONS AND REQUIREMENTS.**

DRAWING TYPE : CUSTOMER			
DIMENSIONS ENCLOSED IN ( ) INDICATE REFERENCE DIMENSIONS AND NO TOLERANCE LIMITS ARE ESTABLISHED			
TOLERANCES UNLESS OTHERWISE SPECIFIED			
DIMENSION (inches)	TOLERANCE	DIMENSION (mm)	TOLERANCE
0-0.787	±0.006	0-20	±0.152
0.788-1.181	±0.008	21-30	±0.203
1.182-2.756	±0.012	31-70	±0.305
2.757-3.937	±0.016	71-100	±0.406
3.938-5.096	±0.020	101-150	±0.508
5.097-7.874	±0.024	151-200	±0.610
7.875-9.843	±0.032	201-250	±0.813
ANGULAR TOLERANCE ± 2°			
<b>PROPRIETARY AND CONFIDENTIAL</b>			
THIS DRAWING IS PROTECTED BY COPYRIGHT AND CONTAINS INFORMATION PROPRIETARY TO MOLD-RITE, WEATHERCHEM AND STULL TECHNOLOGIES. ANY REPRODUCTION, DISCLOSURE, OR USE OF ITS CONTENTS OR ANY PART THEREOF IS EXPRESSLY PROHIBITED EXCEPT AS MOLD-RITE, WEATHERCHEM AND STULL TECHNOLOGIES OTHERWISE MAY AGREE IN WRITING			

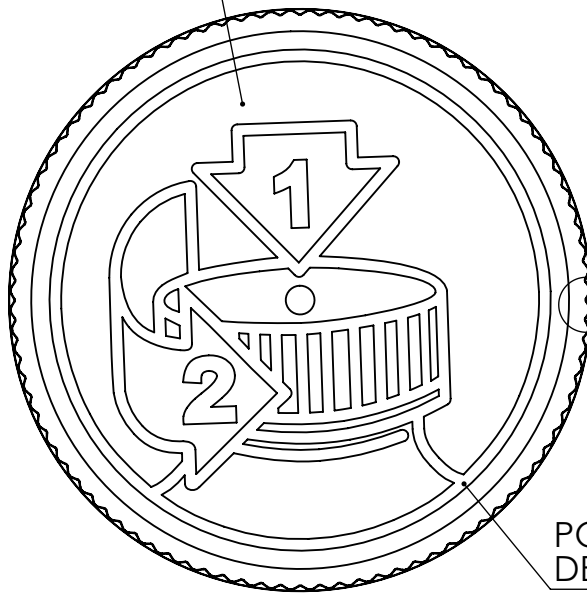
THIRD ANGLE PROJECTION  SOLIDWORKS	DISTRIBUTION CODE <b>D</b>	DRAWING NAME <b>70-400 CRC ASSM PICTO DEBOSSED LOGO</b> DRAWING NUMBER <b>CQA-10125</b> MATERIAL <b>PP/CO-POLY</b> MODEL NUMBER: 10125-01-AA 70MM PDT ASSM (MASTER) SCALE: 2:3    SHEET SIZE: 8½ x 11    SHEET: 1 of 3    REV: 02    N/P: AC
DRAWN BY: L BROZELL QA APPR: A PAINE	01/15/15 07/06/16	

REVISION HISTORY

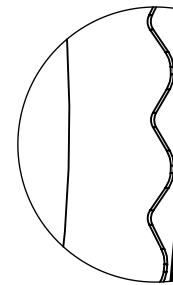
REV	N/P	DATE	REVISION	DE
00	AA	01/15/15	INITIAL DRAWING	LMB
01	AA	05/08/15	UPDATED DRAWING FOR VALIDATION RUN DATA	CDB
02	AA	06/11/15	UPDATED DRAWING FOR RELEASE	CDB
02	AB	06/30/15	UPDATED DRAWING FOR CORRECTED DATA	CDB
02	AC	07/05/16	ADDED H (SEATED) PAGE 1. CORRECTED BOTTLE BEAD 2.603 WAS 3.603	BDG



MATTE FINISH  
TOP SURFACE



RIB



DETAIL RIB  
SCALE 5 : 1  
(92) EQUISPACED RIBS

POLISHED INSTRUCTIONS  
DEBOSSED 0.010 [0.25]

THE CLOSURE DIMENSIONS DEPICTED ARE THOSE WHICH HAVE GENERALLY BEEN FOUND TO BE FUNCTIONAL BASED ON INDUSTRY EXPERIENCE BECAUSE OF VARIABILITY IN GLASS AND PLASTIC CONTAINER FINISHES, EACH CLOSURE/FINISH SYSTEM SHOULD BE INDIVIDUALLY EVALUATED AND TESTED TO ENSURE IT MEETS APPLICABLE PERFORMANCE CRITERIA. SEE QUALITY ASSURANCE SPECIFICATIONS FOR ADDITIONAL INFORMATION.

MOLD-RITE, WEATHERCHEM AND STULL TECHNOLOGIES RESERVES THE RIGHT TO REVISE ANY OR ALL SPECIFICATIONS AND REQUIREMENTS.

DRAWING TYPE : CUSTOMER

DIMENSIONS ENCLOSED IN ( ) INDICATE REFERENCE DIMENSIONS AND NO TOLERANCE LIMITS ARE ESTABLISHED

TOLERANCES UNLESS OTHERWISE SPECIFIED

DIMENSION (inches)	TOLERANCE	DIMENSION (mm)	TOLERANCE
0-0.787	±0.006	0-20	±0.152
0.788-1.181	±0.008	21-30	±0.203
1.182-2.756	±0.012	31-70	±0.305
2.757-3.937	±0.016	71-100	±0.406
3.938-5.096	±0.020	101-150	±0.508
5.097-7.874	±0.024	151-200	±0.610
7.875-9.843	±0.032	201-250	±0.813

ANGULAR TOLERANCE ± 2°

PROPRIETARY AND CONFIDENTIAL

THIS DRAWING IS PROTECTED BY COPYRIGHT AND CONTAINS INFORMATION PROPRIETARY TO MOLD-RITE, WEATHERCHEM AND STULL TECHNOLOGIES. ANY REPRODUCTION, DISCLOSURE, OR USE OF ITS CONTENTS OR ANY PART THEREOF IS EXPRESSLY PROHIBITED EXCEPT AS MOLD-RITE, WEATHERCHEM AND STULL TECHNOLOGIES OTHERWISE MAY AGREE IN WRITING



DISTRIBUTION CODE  
**D**

DRAWING NAME  
**70-400 CRC ASSM  
PCTO DEBOSSED LOGO**

DRAWN BY: REFER TO PAGE 1

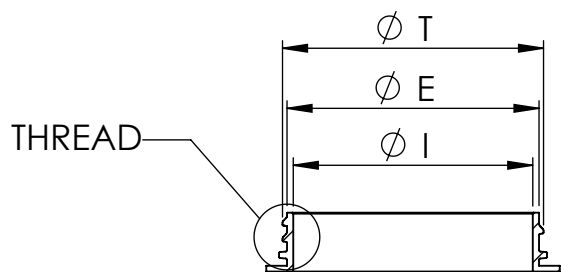
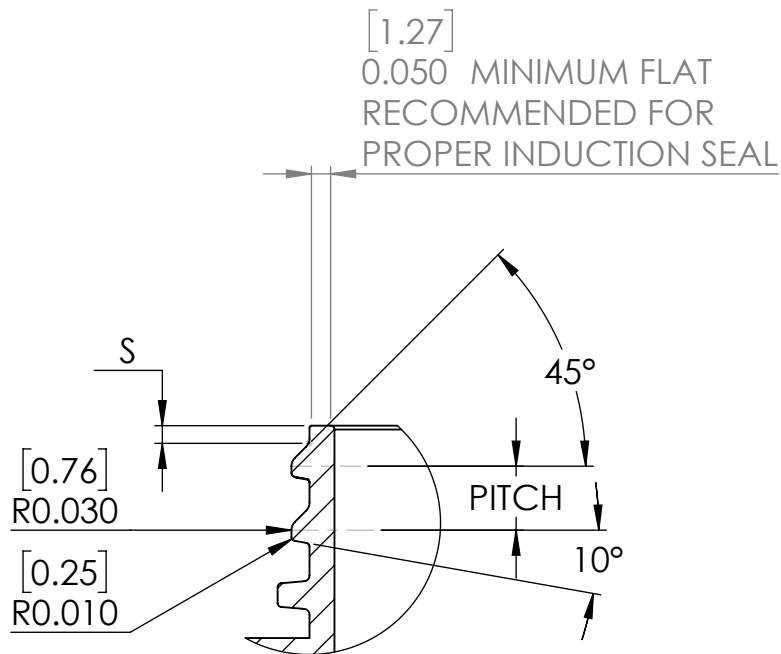
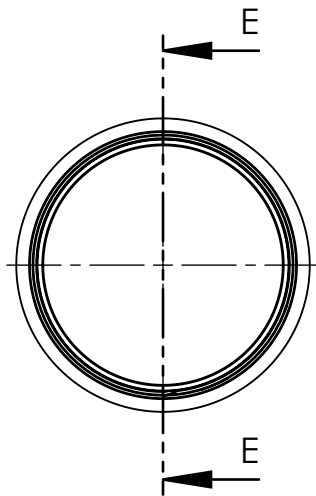
DRAWING NUMBER  
**CQA-10125**

QA APPR: REFER TO PAGE 1

MATERIAL  
**SEE NOTES**

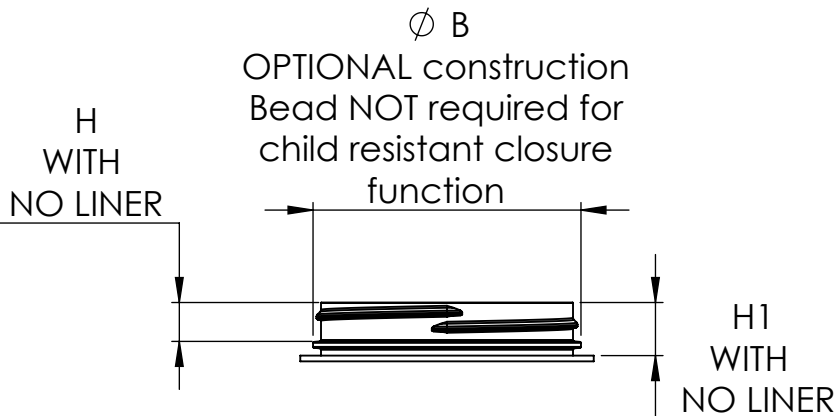
SCALE	SHEET SIZE	SHEET	REV	N/P
	8½ x 11	2 of 3	02	AC

# Recommended Neck Finish



SECTION E-E  
SCALE 1 : 2

DETAIL THREAD  
SCALE 2 : 1



	TOLERANCE	UNITS	
<b>E</b>	±0.017 [0.43]	in [mm]	2.625 [66.68]
<b>T</b>	±0.017 [0.43]	in [mm]	2.719 [69.06]
<b>I</b>	MINIMUM	in [mm]	2.247 [57.07]
<b>S</b>	±0.015 [0.38]	in [mm]	0.046 [1.17]
<b>H</b>	MINIMUM	in [mm]	0.393 [9.98]
<b>H1</b>	MINIMUM	in [mm]	0.538 [13.67]
<b>B</b>	MAXIMUM	in [mm]	2.800 [71.12]
<b>TPI</b>			6
<b>PITCH</b>		in [mm]	0.167 [4.23]

THE CLOSURE DIMENSIONS DEPICTED ARE THOSE WHICH HAVE GENERALLY BEEN FOUND TO BE FUNCTIONAL BASED ON INDUSTRY EXPERIENCE BECAUSE OF VARIABILITY IN GLASS AND PLASTIC CONTAINER FINISHES, EACH CLOSURE/FINISH SYSTEM SHOULD BE INDIVIDUALLY EVALUATED AND TESTED TO ENSURE IT MEETS APPLICABLE PERFORMANCE CRITERIA. SEE QUALITY ASSURANCE SPECIFICATIONS FOR ADDITIONAL INFORMATION.

**MOLD-RITE, WEATHERCHEM AND STULL TECHNOLOGIES RESERVES THE RIGHT TO REVISE ANY OR ALL SPECIFICATIONS AND REQUIREMENTS.**

DRAWING TYPE : CUSTOMER

DIMENSIONS ENCLOSED IN ( ) INDICATE REFERENCE DIMENSIONS AND NO TOLERANCE LIMITS ARE ESTABLISHED

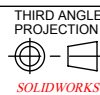
TOLERANCES UNLESS OTHERWISE SPECIFIED

DIMENSION (inches)	TOLERANCE	DIMENSION (mm)	TOLERANCE
0-0.787	±0.006	0-20	±0.152
0.788-1.181	±0.008	21-30	±0.203
1.182-2.756	±0.012	31-70	±0.305
2.757-3.937	±0.016	71-100	±0.406
3.938-5.096	±0.020	101-150	±0.508
5.097-7.874	±0.024	151-200	±0.610
7.875-9.843	±0.032	201-250	±0.813

ANGULAR TOLERANCE ± 2°

**PROPRIETARY AND CONFIDENTIAL**

THIS DRAWING IS PROTECTED BY COPYRIGHT AND CONTAINS INFORMATION PROPRIETARY TO MOLD-RITE, WEATHERCHEM AND STULL TECHNOLOGIES. ANY REPRODUCTION, DISCLOSURE, OR USE OF ITS CONTENTS OR ANY PART THEREOF IS EXPRESSLY PROHIBITED EXCEPT AS MOLD-RITE, WEATHERCHEM AND STULL TECHNOLOGIES OTHERWISE MAY AGREE IN WRITING



THIRD ANGLE PROJECTION



DISTRIBUTION CODE

DRAWING NAME

**70-400 CRC  
RECOMMENDED NECK FINISH**

DRAWING NUMBER

**CQA-10125**

DRAWN BY: REFER TO PAGE 1

QA APPR: REFER TO PAGE 1

MATERIAL

SCALE SHEET SIZE SHEET REV N/P  
1:2 & NOTED 8½ x 11 3 of 3 02 AC



1 PLANT STREET  
 PLATTSBURGH, NY 12901  
 TEL 518.561.1812  
 FAX 518.561.0017  
[MRPCAP.COM](http://MRPCAP.COM)

## Product Data Sheet

### MRP-PP30-1 Grade

### Polypropylene, Homopolymer Plastic Resin

#### Product Description

MRP-PP30-1 is a high flow polypropylene homopolymer resin designed for injection molding applications requiring good balance stiffness, excellent part finish, process ability, and good mold release.

#### Compliant to the Following Regulatory Standards:

FDA-21 CFR 177.1520(c)

EU 10/2011, EC 2002/72

RoHS

Proposition 65

CONEG/Heavy Metal

Typical Properties	Method	Typical Value	Unit
<b>Physical</b>			
Melt Mass-Flow Rate (MFR) (230°C/2.16 kg)	ASTM D1238	30	g/10 min
<b>Mechanical</b>			
Tensile Strength (50mm/min) (Yield)	ASTM D 638	33.1	MPa
Tensile Elongation (50mm/min) (Yield)	ASTM D 638	10	%
Flexural Modulus – 1% Secant (1.3 mm/min)	ASTM D790A	1380	MPa
Hardness, Rockwell R	ASTM D785	104	-
<b>Impact</b>			
Notched Izod impact (23 °C, Method A)	ASTM D 256A	37	J/m
<b>Thermal</b>			
Heat Deflection (Softening Point) Unannealed DTLU @ 66psi	ASTM D 648	91	°C
Processing Range	----	400 – 500	°F

For further regulatory information contact Mold-Rite Plastics customer service or sales department.

#### Notes:

These are typical properties not to be construed as specifications.

Mold-Rite Plastics warrants this grade to meet typical data values and physical, chemical, and processing properties.

All results were obtained from manufacturer product data sheets (where applicable). The data are intended as a general guide, only, and do not necessarily represent results that may be obtained elsewhere. The use of Mold-Rite Plastics products must be guided by the users' own methods for selection of proper formulation. Mold-Rite Plastics disclaims any responsibility for misuse or misapplication of its products. Mold-Rite Plastics' liability and customer's exclusive remedy for any claims arising out of sales of its products are expressly limited to customer option for replacement (not to exceed the purchase price) with the addition of transportation charges, on material for which damage is claimed.



1 PLANT STREET  
 PLATTSBURGH, NY 12901  
 TEL 518.561.1812  
 FAX 518.561.0017  
 MRPCAP.COM

## Product Data Sheet

### CP0001 Grade Polypropylene, Impact Copolymer Plastic Resin

#### Product Description

CP0001 is a high flow, high impact polypropylene copolymer grade resin designed for injection molding applications requiring good balance stiffness, impact resistance and process ability.

#### Compliant to the Following Regulatory Standards:

FDA-21 CFR 177.1520(c)  
 EU 10/2011, EC 2002/72  
 RoHS  
 Proposition 65  
 CONEG/Heavy Metal

Typical Properties	Method	Typical Value	Unit
<b>Physical</b>			
Melt Mass-Flow Rate (MFR) (230°C/2.16 kg)	ASTM D1238	35	g/10 min
<b>Mechanical</b>			
Tensile Strength (50mm/min) (Yield)	ASTM D 638	22	MPa
Tensile Elongation (50mm/min) (Yield)	ASTM D 638	6	%
Flexural Modulus – 1% Secant (1.3 mm/min)	ASTM D790A	1,000	MPa
Hardness, Rockwell R	ASTM D785	95	-
<b>Impact</b>			
Notched Izod impact (23 °C, Method A)	ASTM D 256A	107	J/m
<b>Thermal</b>			
Heat Deflection (Softening Point) Unannealed DTLU @ 66psi	ASTM D 648	88	°C
Processing Range	-----	400 – 500	°F

For further regulatory information contact Mold-Rite Plastics customer service or sales department.

#### Notes:

These are typical properties not to be construed as specifications.  
 Mold-Rite Plastics warrants this grade to meet typical data values and physical, chemical, and processing properties.

All results were obtained from manufacturer product data sheets (where applicable). The data are intended as a general guide, only, and do not necessarily represent results that may be obtained elsewhere. The use of Mold-Rite Plastics products must be guided by the users' own methods for selection of proper formulation. Mold-Rite Plastics disclaims any responsibility for misuse or misapplication of its products. Mold-Rite Plastics' liability and customer's exclusive remedy for any claims arising out of sales of its products are expressly limited to customer option for replacement (not to exceed the purchase price) with the addition of transportation charges, on material for which damage is claimed.



1 PLANT STREET  
 PLATTSBURGH, NY 12901  
 TEL 518.561.1812  
 FAX 518.561.0017  
[MRPCAP.COM](http://MRPCAP.COM)

## Product Data Sheet

### MRPWH01 White

#### Product Description

This specification, designated by Mold-Rite Plastics, covers all colorants that meet the typical value data listed below;

#### Regulatory Compliance

FDA – Title 21 CFR for Food & Drug Contact  
 RoHS Compliant  
 CONEG/Heavy Metal Compliant  
 Proposition 65 Compliant

Typical Properties	Typical Value
Density	.90
Pellets	Standard
Carrier Resin	PP
Visual Evaluation	Excellent
Additives	None
DE Tolerance	< 2.00

For further regulatory information, contact Mold-Rite Plastics customer service or sales department.

Notes: These are typical properties not to be construed as specifications. Mold-Rite Plastics reserves that right to include any other colorant that meets that above data values and regulatory requirements.

All results were obtained from manufacturer product data sheets (where applicable). The data are intended as a general guide only and do not necessarily represent results that may be obtained elsewhere. The use of Mold-Rite Plastics products must be guided by the users own methods for selection of proper formulation. Mold-Rite Plastics disclaims any responsibility for misuse or miss application of its products. Mold-Rite Plastics liability and customer’s exclusive remedy for any claims arising out of sales of its products are expressly limited at customer option for replacement not to exceed the purchase price plus transportation charges thereon in respect to any material which damage is claimed.

Rev 3; Date: 04/05/2016



Freshness and Protection for Today's Packaging

# FoilSeal™ Technical Data Sheet

**.035" C25P FS 3-19**

Revision: FS319-07282014

MRP DESCRIPTION  
(F39) (F39)FS3-19/C25P.035 PL FOAM

<b>Product</b>	.035" C25P FS 3-19																				
<b>Scope</b>	Two piece foam backed heat induction foil innerseal that will provide an aggressive bond with clean peel removal from PET and PVC containers. (Not recommended for use on CPET. Easy access / "puncture foil" when wax bonded to pulp.																				
<b>Composition</b>	<table border="1"> <thead> <tr> <th>Material</th> <th>Standard</th> <th>Metric</th> </tr> </thead> <tbody> <tr> <td>Backing</td> <td>.035"</td> <td>.889 mm</td> </tr> <tr> <td>Paper</td> <td>.005"</td> <td>.127 mm</td> </tr> <tr> <td>Wax</td> <td>-</td> <td>-</td> </tr> <tr> <td>Foil</td> <td>.001"</td> <td>.0254mm</td> </tr> <tr> <td>Heat Seal</td> <td>.0005"</td> <td>.0127mm</td> </tr> </tbody> </table>	Material	Standard	Metric	Backing	.035"	.889 mm	Paper	.005"	.127 mm	Wax	-	-	Foil	.001"	.0254mm	Heat Seal	.0005"	.0127mm		
Material	Standard	Metric																			
Backing	.035"	.889 mm																			
Paper	.005"	.127 mm																			
Wax	-	-																			
Foil	.001"	.0254mm																			
Heat Seal	.0005"	.0127mm																			
Adhesive or resin bonding layers not shown.																					
<b>FDA Status:</b> 21 CFR 177.1210	<b>Recommended Storage and Handling:</b> Refer to Website																				
<b>Drug Master File (DMF):</b> #4544	<b>EU / EP Reg.:</b>																				
<b>GTR Oxygen:</b> Essentially Zero	<b>MVTR:</b> Essentially Zero																				
<b>Print Location (if any):</b> Foil Layer and/or Heat Seal Layer																					

Selig materials are compliant with current USFDA Food allergen Guidelines.  
Selig materials are compliant with California Proposition 65 labeling requirements.  
Selig materials are compliant with limitation of heavy metals in packaging per CONEG & EU 94/62/EC, article 11.

MSDS's are not required as Selig is not a chemical manufacturer or distributor and our products are 'articles' intended for food packaging per 29 CFR 1910.1200 (HazCom).

The information contained within this product data bulletin is to be used as a general guide in determining which structures are offered for sealing to specific container materials. All of the information which we provide is reliable to the best of our knowledge, but the accuracy thereof is not guaranteed. We suggest that consumers determine suitability for their own application.

www.seligsealing.com

Corporate Headquarters  
Selig Sealing Products, Inc.  
342 E Wabash St  
Forrest, IL 61741, USA  
Phone: +1 (815) 785-2100  
Fax: +1 (815) 657-7584

North American Sales  
Selig Sealing Products, Inc.  
184 Shuman Blvd., Suite 310  
Naperville, IL 60563, USA  
Phone: +1 (630) 922-3158  
Fax: +1 (630) 922-8469

European Sales and Manufacturing  
Selig UK, LTD 635-637 Ajax Avenue  
Slough Trading Estate  
Slough Berkshire SL14BH UK  
Phone: +44 (0) 1753 773 000  
Fax: +44 (0) 1753 773 111

Canadian Manufacturing  
Selig Canada, ULC  
145 Edward Street  
Aurora, Ontario Canada, L4G 1W3  
Phone: +1 (905) 727-0114  
Fax: +1 (905) 727-8544

Swiss Manufacturing  
Selig Switzerland LTD  
Bahnhofstrasse 11  
CH-8172 Niederglatt  
Phone: +41 (0) 44 851 50 50  
Fax: +41 (0) 44 851 50 51

