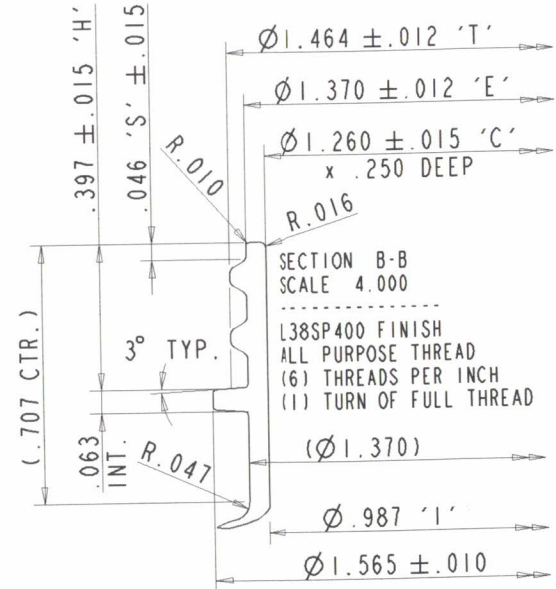
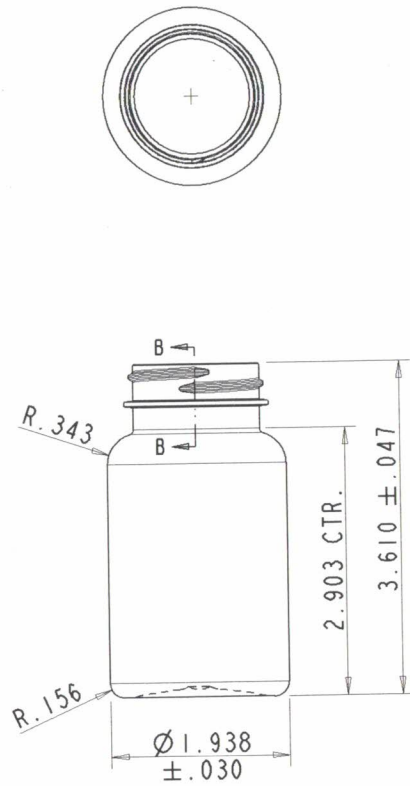


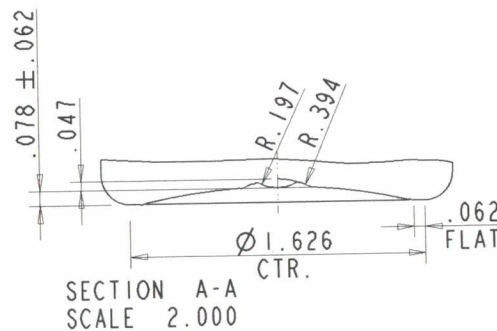
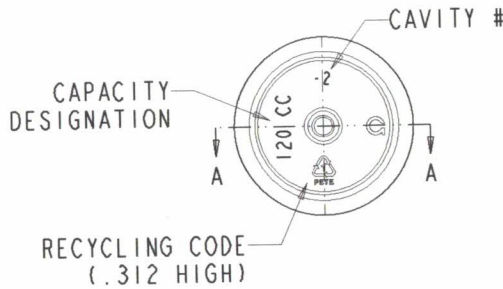
| REV | DATE | BY | REVISION |
|-----|--------|-----|--|
| | 082510 | RRJ | |
| A | | | REVISED TITLE BLOCK & NOTES. |
| B | | | B1 REMOVED NOTES 5 & 6 B2 REMOVED DIM'S 2.528 & 1.342 B3 REVISED THREAD DETAIL |
| C | 102315 | ES | REDRAWN FROM 3167-0203-B. |
| D | 050117 | ES | MODIFIED PUSHUP ENGRAVING. |
| E | 081518 | ES | ADDED MIN WALL LOCATION & NOTE 5. |
| F | 112718 | ES | WEIGHT WAS 16 ± 1 GRAMS. |



SCALE 0.750



SECTION B-B
SCALE 4.000
L38SP400 FINISH
ALL PURPOSE THREAD
(6) THREADS PER INCH
(1) TURN OF FULL THREAD



(A) NOTES:

- 1 - MOLD NO. NB-400112
- 2 - MAX. VARIATION IN AVERAGE DIAMETER BETWEEN TOP AND BOTTOM NOT TO EXCEED .010
- 3 - ALL DIMENSIONS APPLY AS MOLDED
- 4 - MAXIMUM OUT OF ROUNDNESS ON BODY OF CONTAINER NOT TO EXCEED .015.
- 5 - .012" MIN. WALL THICKNESS.

RESTRICTED, CONFIDENTIAL DOCUMENT

THIS DOCUMENT AND THE INFORMATION THEREON IS THE SOLE AND EXCLUSIVE PROPERTY OF PERFORMANCE PLASTIC TECHNOLOGIES AND/OR ITS DESIGNATED DISTRIBUTOR/RESALE. IT IS ON THE EXTREMELY HIGH TO BE KEPT FOR A SPECIFIC LIMITED PURPOSE AND MAY BE USED ONLY FOR SUCH PURPOSE. BY ACCEPTING THIS DOCUMENT, THE RECIPIENT AGREES THAT HE WILL ENSURE THAT THE DOCUMENT AND ALL INFORMATION THEREON: (1) WILL BE MAINTAINED IN STRICTEST CONFIDENCE; (2) WILL NOT BE REPRODUCED, IN WHOLE OR IN PART, IN ANY MANNER OR FORM, TO ANY THIRD PARTY WITHOUT THE EXPRESS WRITTEN APPROVAL OF PPT; (3) WILL NOT BE DISCLOSED DIRECTLY OR INDIRECTLY, IN ANY MANNER OR FORM, TO ANY THIRD PARTY WITHOUT THE EXPRESS WRITTEN APPROVAL OF PPT AND; (4) WILL BE PROMPTLY AND VOLUNTARILY RETURNED, WITH ANY AND ALL COPIES, TO PPT WHEN IT HAS SERVED THE PURPOSE INTENDED BY PPT, OR AT THE REQUEST OF PPT.



120 cc CT ROUND WIDE MOUTH PACKER
L38SP400 FINISH

FILE NAME:
XXXX_120cc-STR-SIDE
(15-076-01-F)

SIZE: C DRAWN BY: RRJ DWG NO: 3167-0203-F
SCALE: 1,4:1 DATE: 08-25-2010 SHEET 1 OF 1

| | | | | |
|---------------------------------|--------------------------------------|------------|--------|-----------------------------------|
| 20.03 SQUARE INCHES | 5.49 SQUARE INCHES | 20.0 ± 1.0 | PET | 141.4 ± 4.5 cc (4.78 ± .15 fl oz) |
| SURFACE AREA BELOW BASE OF NECK | AREA AT PART LINE BELOW BASE OF NECK | GRAMS | MAT'L. | OVERFLOW CAPACITY |

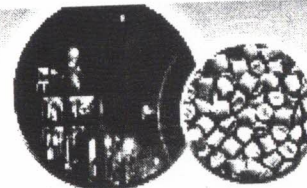
2

3

4

Gatronova PET Resin

Specification Sheet



| Polyester Bottle Grade Resin | | | | | | |
|------------------------------|--------|---------------------------|----------------------|--------------------------|--------------------------|--------------------------|
| Properties | Unit | Test Method | Test Equipment | Novatex Specifications | | |
| | | | | A 74 / A 76 | A 80 | A 84 |
| Intrinsic Viscosity (IV) | [dl/g] | PV-07040.5 ^a | Capillary Viscometer | 0.76 ± 0.02 ^a | 0.80 ± 0.02 ^a | 0.85 ± 0.02 ^a |
| DEG Content | % | PV-09040 | Gas Chromatograph | ≤ 1.5 | ≤ 1.5 | ≤ 1.5 |
| Acetaldehyde (AA) | ppm | Cobarr 201/A ¹ | Gas Chromatograph | < 1.0 | < 1.0 | < 1.0 |
| Moisture Content | % | PV-07109.5 | MEECO | 0.4 Max | 0.4 Max | 0.4 Max |
| Melting Point (DSC) | [°C] | PV-07089.2 | Mettler DSC | 247 ± 2 | 247 ± 2 | 247 ± 2 |
| Color No. Hunter Lab | LH | PV-07136.1 | BYK Gardener | ≥ 83 | ≥ 83 | ≥ 83 |
| Color No. Hunter Lab | *bH | PV-07136.1 | BYK Gardener | 0 ± 1.25 | 0 ± 1.25 | 0 ± 1.25 |
| No. of Chips/gram | No. | Manual | - | 61 ± 3 | 61 ± 3 | 61 ± 3 |

Specifications as per Zimmer test methods. Details of method can be provided upon request.

¹ As per Sinco method

^a IV is done according to PV-07040.5- Solvent is Phenol/Dichlorobenzene using ubbelohde type 1(c) capillary viscometer at 25°C.

≤ read as less than or equal to

≥ read as greater than or equal to

The information and the data contained here is believed to be correct and there are FDA/EEC compliance certifications and other major food grade approvals available and can be provided upon request.