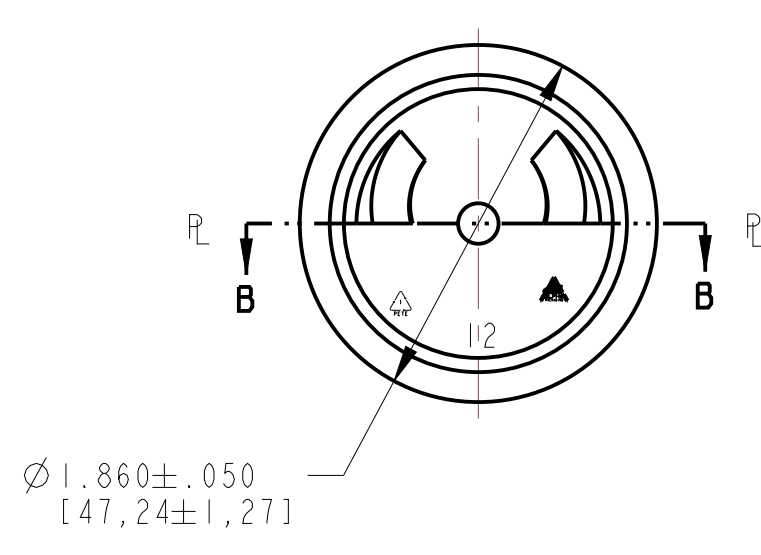
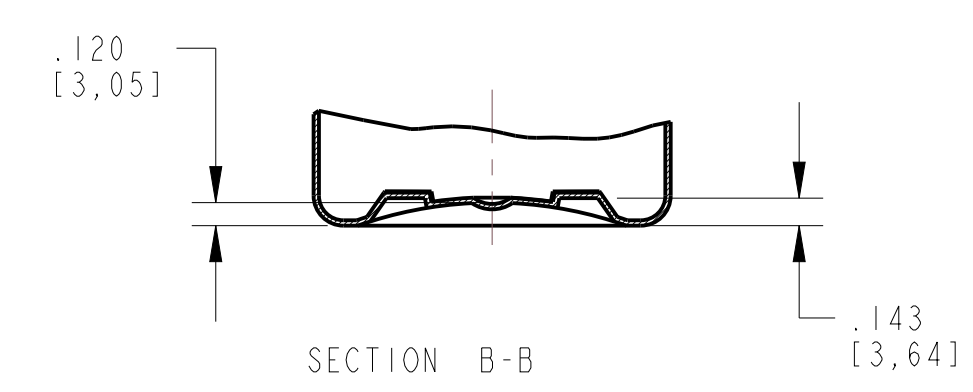


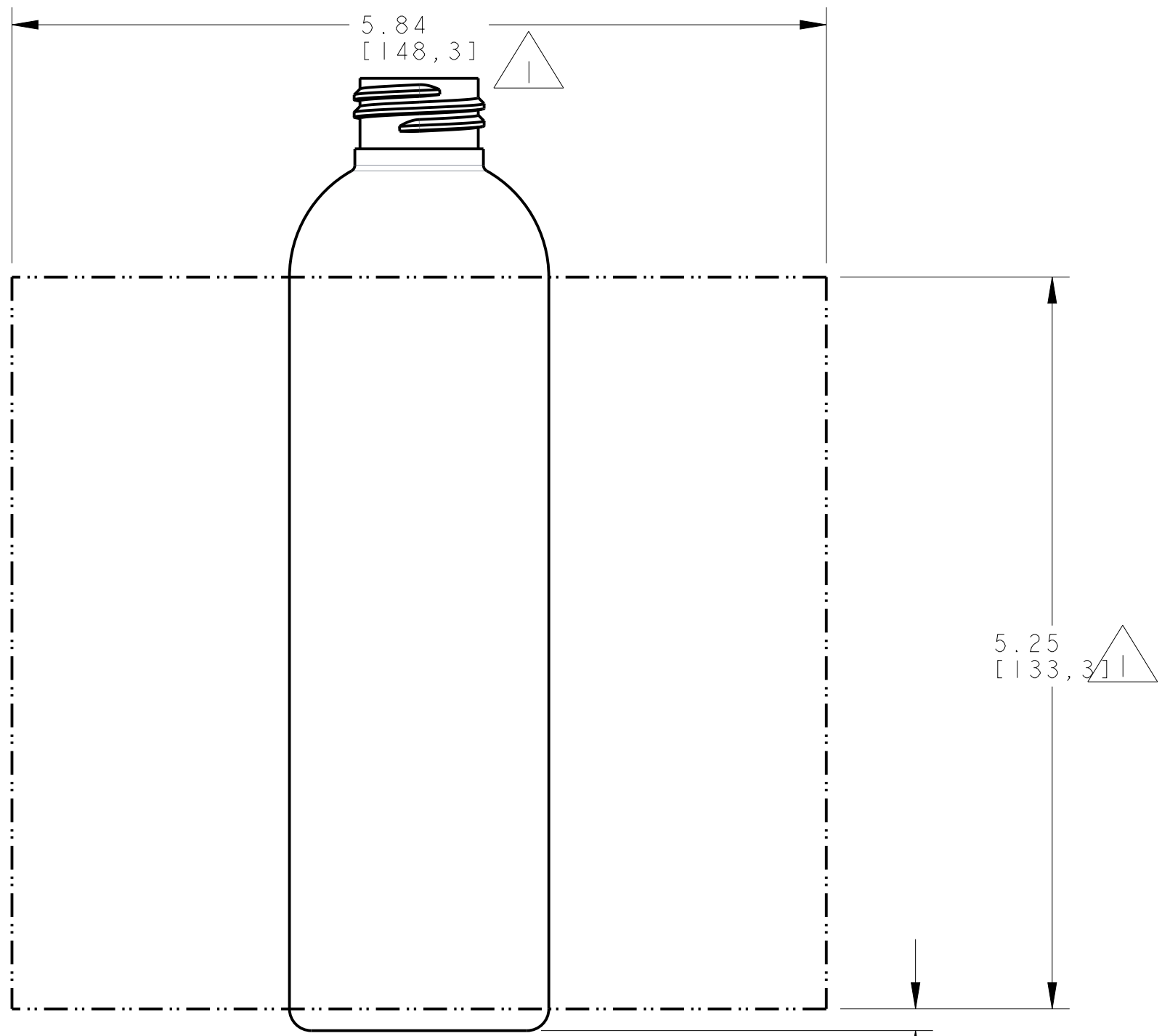
**NECK DETAIL**  
SCALE: 2:1

- FINISH SPECIFICATIONS:**
1. FINISH: M24-410
  2. NO. OF TURNS: 2 FULL THREAD TURNS
  3. THREADS PER INCH: 8
  4. THREAD START: 90° FROM P.L. (AS SHOWN)



- NOTES:**
1. CRITICAL DIMENSIONS ARE SHOWN WITH TOLERANCES. CRITICAL DIMENSION TO BE USED FOR QC PURPOSES.
  2. ALL OTHER DIMENSIONS TO BE USED FOR REFERENCE ONLY.

				THIS ARTICLE CONTAINS CONFIDENTIAL INFORMATION PROPRIETARY TO ALPHA PACKAGING. THIS ARTICLE MAY NOT BE DISCLOSED, REPRODUCED, TRANSFERRED OR MANUFACTURED WITHOUT PRIOR WRITTEN AUTHORIZATION FROM ALPHA PACKAGING. © Copyright, 2019, Alpha Packaging, Inc.				Alpha Packaging, Inc (314) 427-4300 (800) 421-4772	
				TITLE: 8 oz COSMO					
D	207	WEIGHT TOLERANCE WAS +-1.0 g & UPDATED DWG.	JAZ	Oct-31-19	TOLERANCES: UNLESS OTHERWISE SPECIFIED	DRAWN BY: SCT	NECK: M24-410	WEIGHT (g): 25.8 ±2.0 g	
C		MIN. WALL WAS .012, WT TOL WAS ±3.0g	RAB	May-13-15	DECIMALS .XX±	DATE: Dec-05-00	MIN WALL (in): .010	OVERFLOW (cc): 253.0 ±7.0 cc	
B		WT. TOL INCR'D (1)	SB	May-19-14	.XXX±	SCALE: 1/1	CUSTOMER: STOCK	3D FILE No: CM80Z410	
A		REVISE DECO LUGS	SCT	Apr-14-06	.XXXX±	SHEET: 1 of 2	MATERIAL: PET	DRAWING No: 8LR1CM24M410	
REV	ECR	DESCRIPTION	BY	DATE	FRACTIONS ±	NPD No: XXXXX		REV: D	
					ANGLES ±				



Neck Finish: .156 [3, 96]

Color	Weight	Std. Pack
PET		

8oz COSMO, PET,  
24-410 CT

SJ

 MAX LABEL PANEL

06-04-07

**A**  
SH 2