



97 N. Leslie Dr
North East, MD 21901
410-287-6944

2 oz 20/410 BRD PET



PRODUCT: **T002BRD020410WH3 White**

T002BRD020410AM3 Amber

T002BRD020410CL3 Clear

DRAWING: **3002002**

HEIGHT: **3.2 inches**

Diameter: **1.4 inches**

Overflow: **61 cc**

MATERIAL: **PET, Clear, Nanya Tairilin Chip AA20 or alternate**

Maximum Regrind **0.00%, Virgin Only**

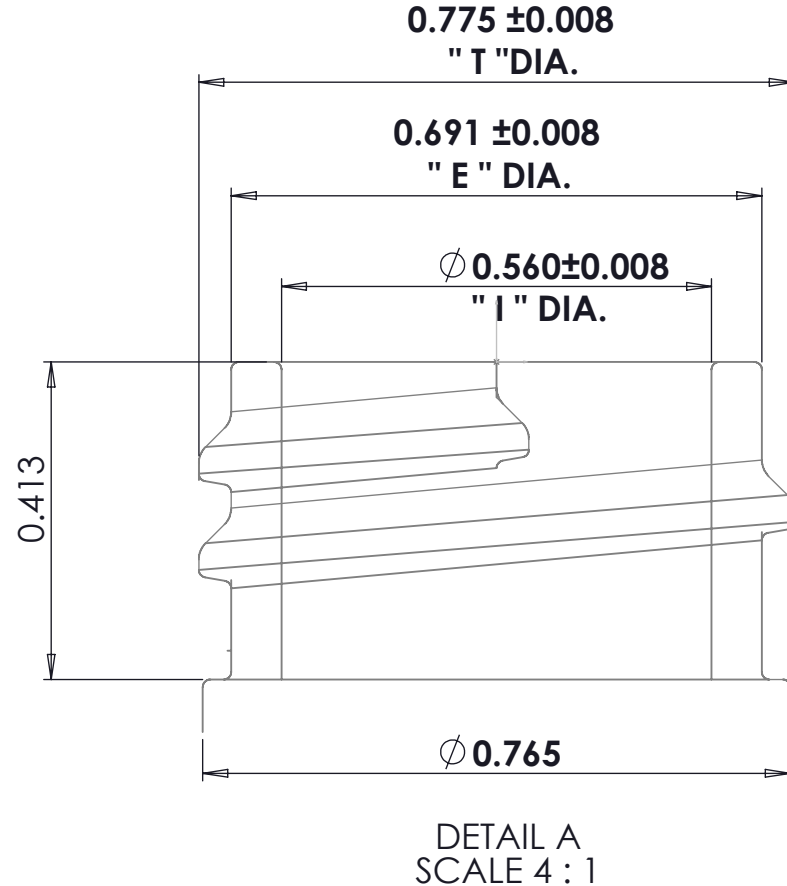
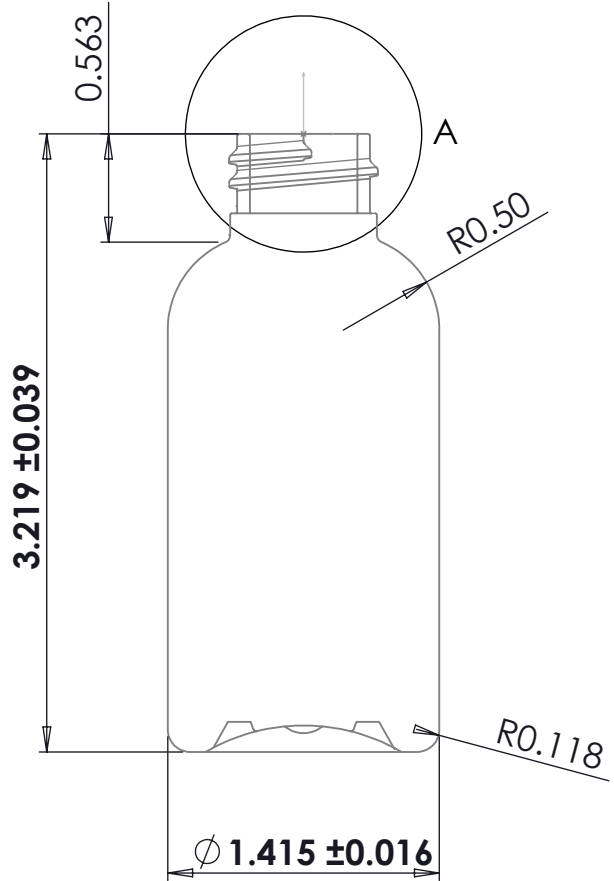
PCS/CASE: **1150, 20 cases/pallet**

GROSS WEIGHT/ PALLET: **520 lbs**

PALLET: **48"x40" 4 way kiln dry**

UNITIZE/PALLETIZE: **Stretch wrap on 48"x40" 4 way pallet with 0.7 MIL Stretch Film**

HEIGHT WITH PALLET NOT TO EXCEED **100 inches**



Rev. B tolerance changed from 0.028 to 0.039 on overall height , added tolerance on I dimension. 01/04/2018

UNLESS OTHERWISE SPECIFIED:
 DIMENSIONS ARE IN INCHES
 TOLERANCES:
 FRACTIONAL ± 1/16
 ANGULAR: MACH ± BEND ±
 TWO PLACE DECIMAL ±.05
 THREE PLACE DECIMAL ±.005

PROPRIETARY AND CONFIDENTIAL
 THE INFORMATION CONTAINED IN THIS DRAWING IS THE SOLE PROPERTY OF **TIM PLASTICS, INC.** ANY REPRODUCTION IN PART OR AS A WHOLE WITHOUT THE WRITTEN PERMISSION OF **TIM PLASTICS, INC.** IS PROHIBITED.

INTERPRET GEOMETRIC TOLERANCING PER:
 MATERIAL **PET**
 FINISH **20SP410**

DO NOT SCALE DRAWING

NAME	DATE
DRAWN AS	02-03-10
CHECKED	02-03-10
ENG APPR. AMIT SHAH	02-03-10
MFG APPR.	02-03-10
Q.A.	02-03-10

COMMENTS:
O'FLOW: 61.0 ± 1.0cc
Weight: 9.5 ± 0.3gms

TIM PLASTICS, INC.

TITLE:
2oz. ROUND-NS

SIZE	DWG. NO.	REV
A	3002002N	B

SCALE: 1:1 WEIGHT: 9.50 ± 0.3gms SHEET 1 OF 1