

SECTION A-A

STATIC TORQUE RECOMMENDATION: 23-40in-lbs  
REQUIREMENT MAY VARY DEPENDING UPON CONTAINER MATERIAL,  
NECK FINISH, AND CAPPING EQUIPMENT

DIMENSIONS ENCLOSED IN ( ) INDICATE REFERENCE DIMENSIONS  
AND NO TOLERANCE LIMITS ARE ESTABLISHED

DIMENSIONS PRECEDED BY AN "" INDICATE THE DIMENSION IS  
PROCESS SENSITIVE. PROCESS SENSITIVE DIMENSIONS ARE  
VERIFIED TO BE WITHIN THE TOLERANCE LIMITS DURING THE  
PRODUCTION RUN. ALL REMAINING DIMENSIONS ARE VERIFIED AT  
PRODUCTION VALIDATION.

PROPRIETARY AND CONFIDENTIAL  
THIS DRAWING IS PROTECTED BY COPYRIGHT AND CONTAINS  
INFORMATION PROPRIETARY TO MOLD-RITE PLASTICS AND ITS  
SUBSIDIARIES. ANY REPRODUCTION, DISCLOSURE, OR USE OF  
ITS CONTENTS OR ANY PART THEREOF IS EXPRESSLY  
PROHIBITED EXCEPT AS MOLD-RITE PLASTICS AND ITS  
SUBSIDIARIES OTHERWISE MAY AGREE IN WRITING.

THIS MASTER DOCUMENT IS CONTROLLED ELECTRONICALLY.  
PRINTED OR DOWNLOADED COPIES ARE UNCONTROLLED.  
DOCUMENT USERS ARE RESPONSIBLE FOR ENSURING THEY HAVE  
THE LATEST REVISION PRIOR TO USE.

THE PART DIMENSIONS DEPICTED ARE THOSE WHICH HAVE GENERALLY BEEN FOUND TO BE FUNCTIONAL BASED ON INDUSTRY EXPERIENCE.  
BECAUSE OF VARIABILITY IN CONTAINER FINISHES, EACH CLOSURE/FINISH SYSTEM SHOULD BE INDIVIDUALLY EVALUATED AND TESTED TO  
ENSURE IT MEETS APPLICABLE PERFORMANCE CRITERIA.

MOLD-RITE PLASTICS AND ITS SUBSIDIARIES RESERVE THE RIGHT TO REVISE ANY OR ALL SPECIFICATIONS AND REQUIREMENTS.

REFERENCE

DIMENSION

TOLERANCE

UNITS

Ø E

2.138 [54.30]

±0.015 [0.38]

in [mm]

Ø T'

2.235 [56.77]

±0.015 [0.38]

in [mm]

H

0.400 [10.16]

±0.010 [0.25]

in [mm]

OAH

0.459 [11.65]

±0.012 [0.30]

in [mm]

OD

2.344 [59.54]

±0.015 [0.38]

in [mm]

PART WEIGHT

5.80

± 1.50

g

THREAD DETAIL  
INFORMATION:

6 THREADS  
PER INCH

0.167" [4.24] PITCH

415°

FULL DEPTH  
THREADS

DRAWN BY: DAS

6/3/2016

ENG APPR: LES

7/17/2023

QA APPR: HW

07/18/2023



DRAWING TITLE:

**58-400 CT CLOSURE**  
S (SMOOTH SIDE, SMOOTH TOP)

MATERIAL:

POLYPROPYLENE

DRAWING TYPE: CUSTOMER

DISTRIBUTION CODE: D

REPLACES DRAWINGS:

C-1013

MODEL NUMBER:

PM 10988 58-400 CT

DWG SIZE:

8.5" x 11"

DRAWING NUMBER:

REVISION:

SCALE:

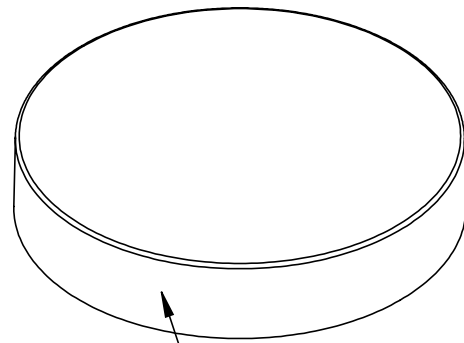
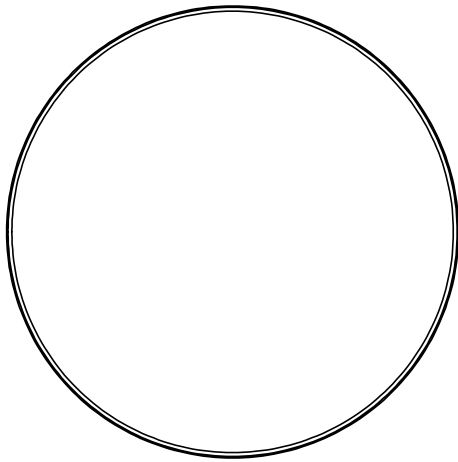
SHEET:

CQA-10746

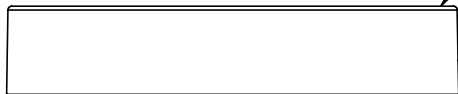
00.AB

1:1

1 OF 3



GATE LOCATION

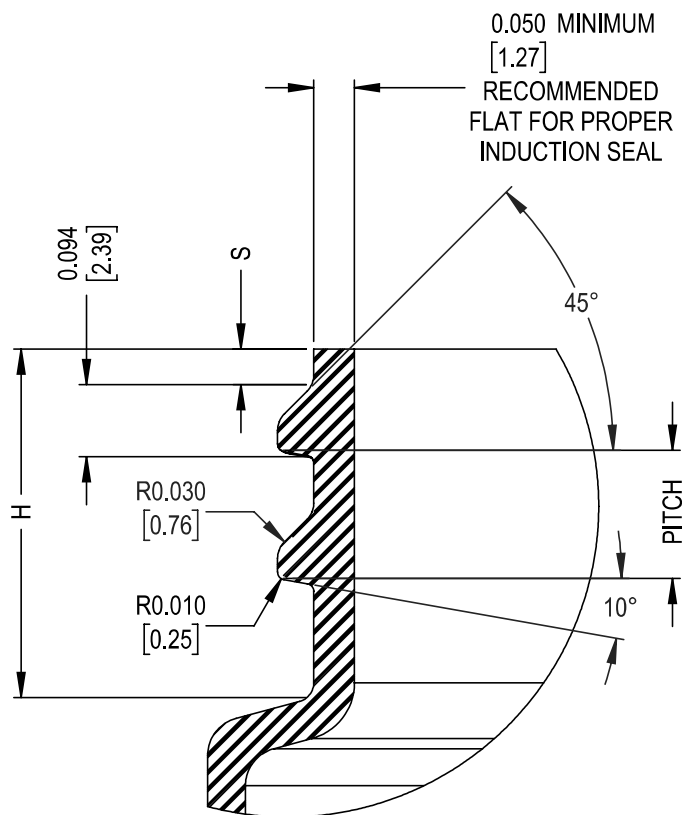
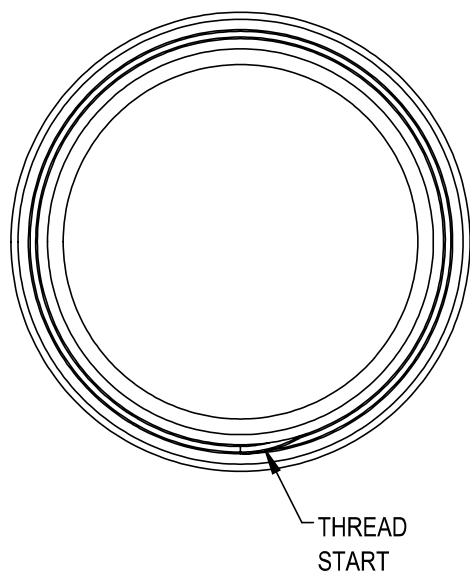


SMOOTH TOP  
SMOOTH SIDES

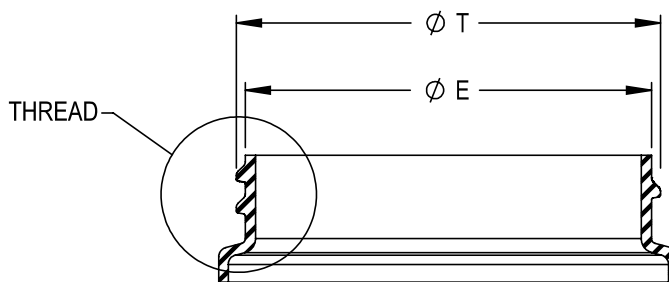
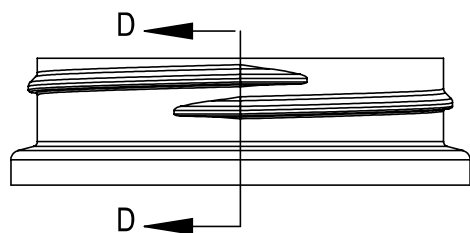
DIMENSIONS ENCLOSED IN ( ) INDICATE REFERENCE DIMENSIONS AND NO TOLERANCE LIMITS ARE ESTABLISHED							
PROPRIETARY AND CONFIDENTIAL THIS DRAWING IS PROTECTED BY COPYRIGHT AND CONTAINS INFORMATION PROPRIETARY TO MOLD-RITE PLASTICS AND ITS SUBSIDIARIES. ANY REPRODUCTION, DISCLOSURE, OR USE OF ITS CONTENTS OR ANY PART THEREOF IS EXPRESSLY PROHIBITED EXCEPT AS MOLD-RITE PLASTICS AND ITS SUBSIDIARIES OTHERWISE MAY AGREE IN WRITING							
THE PART DIMENSIONS DEPICTED ARE THOSE WHICH HAVE GENERALLY BEEN FOUND TO BE FUNCTIONAL BASED ON INDUSTRY EXPERIENCE BECAUSE OF VARIABILITY IN CONTAINER FINISHES, EACH CLOSURE/FINISH SYSTEM SHOULD BE INDIVIDUALLY EVALUATED AND TESTED TO ENSURE IT MEETS APPLICABLE PERFORMANCE CRITERIA. MOLD-RITE PLASTICS AND ITS SUBSIDIARIES RESERVE THE RIGHT TO REVISE ANY OR ALL SPECIFICATIONS AND REQUIREMENTS.	07/17/2023	00	AB	UPDATE DRAWING FORMAT & LOGO. UPDATED RNF "H" TO AVOID INTERFERENCE.	LES	LES	
	05/11/2018	00	AA	DRAWING UPDATED TO REFLECT HISTORICAL RUN DATA & PROCESS CAPABILITY. NO CHANGES TO THE STEEL OR PART HAVE OCCURRED.	BDG	DAS	
	DATE	REV	N/P	DESCRIPTION	ENG	DRW	
	REVISION HISTORY						
	REV: A PHYSICAL CHANGE TO THE PART IMPACTING FIT, FORM OR FUNCTION N/P: DRAWING OR SPECIFICATION CHANGE ONLY						



DRAWING TITLE:			
58-400 CT CLOSURE S (SMOOTH SIDE, SMOOTH TOP)			
THIS MASTER DOCUMENT IS CONTROLLED ELECTRONICALLY. PRINTED OR DOWNLOADED COPIES ARE UNCONTROLLED. DOCUMENT USERS ARE RESPONSIBLE FOR ENSURING THEY HAVE THE LATEST REVISION PRIOR TO USE.			
DRAWING TYPE: CUSTOMER		DISTRIBUTION CODE: D	
DWG SIZE:	8.5" x 11"	DRAWING NUMBER:	REVISION:
SCALE:	SHEET:	CQA-10746	00.AB
1:1 & NOTED	2 OF 3		



DETAIL THREAD  
SCALE 4 : 1



SECTION D-D

RECOMMENDED NECK FINISH IS DETERMINED FOR PROPER FUNCTIONAL PERFORMANCE WITH MOLD-RITE CLOSURE. USE OF MOLD-RITE CLOSURE WITH CONTAINER NOT MATCHING RECOMMENDED NECK FINISH SHOULD BE TESTED AND CONFIRMED FOR APPLICATION BY THE USER.

NOMINAL ORIENTATION OF CLOSURE (IF INDICATED) IS BASED ON NOMINAL DIMENSIONS OF BOTH CLOSURE AND RECOMMENDED NECK FINISH. FOR EXACT ORIENTATION, EACH CONTAINER SHOULD BE EVALUATED ON A CASE BY CASE BASIS.

DIMENSIONS ENCLOSED IN ( ) INDICATE REFERENCE DIMENSIONS AND NO TOLERANCE LIMITS ARE ESTABLISHED

PROPRIETARY AND CONFIDENTIAL  
THIS DRAWING IS PROTECTED BY COPYRIGHT AND CONTAINS INFORMATION PROPRIETARY TO MOLD-RITE PLASTICS AND ITS SUBSIDIARIES. ANY REPRODUCTION, DISCLOSURE, OR USE OF ITS CONTENTS OR ANY PART THEREOF IS EXPRESSLY PROHIBITED EXCEPT AS MOLD-RITE PLASTICS AND ITS SUBSIDIARIES OTHERWISE MAY AGREE IN WRITING

THE PART DIMENSIONS DEPICTED ARE THOSE WHICH HAVE GENERALLY BEEN FOUND TO BE FUNCTIONAL BASED ON INDUSTRY EXPERIENCE. BECAUSE OF VARIABILITY IN CONTAINER FINISHES, EACH CLOSURE/FINISH SYSTEM SHOULD BE INDIVIDUALLY EVALUATED AND TESTED TO ENSURE IT MEETS APPLICABLE PERFORMANCE CRITERIA.

MOLD-RITE PLASTICS AND ITS SUBSIDIARIES RESERVE THE RIGHT TO REVISE ANY OR ALL SPECIFICATIONS AND REQUIREMENTS.

NECK FINISH DIMENSIONS ASSUME ZERO THICKNESS (NO) LINER

REFERENCE	DIMENSION	TOLERANCE	UNITS
Ø E	2.113[53.67]	±0.017 [0.43]	in [mm]
Ø T	2.207[56.07]	±0.017 [0.43]	in [mm]
S	0.046 [1.17]	±0.015 [0.38]	in [mm]
H	0.410 [10.41]	MINIMUM	in [mm]
THREADS PER INCH	6		
PITCH	0.167 [4.24]		in [mm]



DRAWING TITLE:

**58-400 CT CLOSURE  
RECOMMENDED NECK FINISH**

THIS MASTER DOCUMENT IS CONTROLLED ELECTRONICALLY. PRINTED OR DOWNLOADED COPIES ARE UNCONTROLLED. DOCUMENT USERS ARE RESPONSIBLE FOR ENSURING THEY HAVE THE LATEST REVISION PRIOR TO USE.

DRAWING TYPE: CUSTOMER DISTRIBUTION CODE: D

DWG SIZE: 8.5" x 11" DRAWING NUMBER: REVISION:

SCALE: SHEET: 3 OF 3 CQA-10746 00.AB

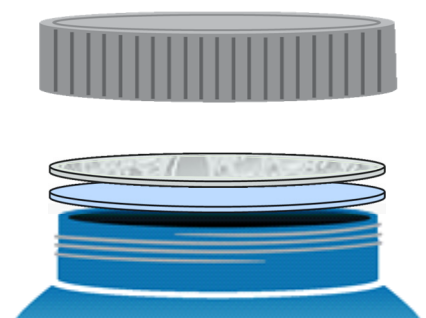
## PRODUCT DATA SHEET

### PressureSeal 20

- PressureSeal 20 is an inner seal with a construction of polystyrene foam coated with pressure sensitive adhesive.
- The US FDA does not consider liners applied with pressure sensitive adhesive to be an effective tamper-resistant feature.
- Recommended for use with dry products.
- Available with standard or custom print.

#### Typical Product Attributes

#### Construction

Polystyrene Foam Pressure Sensitive Adhesive  Thickness Tolerance Minimum Width Width Tolerance		SI (µm)	US (Mils)
		508,0 50,8 – 76,2  ± 10% 25,4 mm ± 1,6 mm	20.0 2.0 – 3.0  ± 10% 1.0 in ± 0.0625 in

#### Properties

Oxygen Transmission (O <sub>2</sub> TR)	Not Tested
Water Vapor Transmission (WVTR)	Not Tested

#### Regulatory Compliance

FDA Compliance	21 CFR 177.1640 Polystyrene and rubber-modified polystyrene. 21 CFR 177.1210 Closures with sealing gaskets for food containers. 21 CFR 175.125 Pressure-sensitive adhesives.
Drug Master File (DMF)	002518
Other Compliances	USFDA Food Allergen Guidelines   California Proposition 65 Labeling Requirements   Limitations of Heavy Metals in Packaging per CONEG & EU 94/62/EC, Article 11
Safety Data Sheet (SDS) Statement	Safety Data Sheets (SDS) are not required for articles as defined in 29 CFR 1910.1200, the OSHA Hazard Communication Standard (HazCom). This product is an article as defined by HazCom and is not considered to be, or to contain, a hazardous chemical based on evaluations made by our company.

Please note that construction does not reflect adhesive or resin bonding layers, if present.

Revision Number: 4  
Revised Date: 2018-06-08

**DISCLAIMER:** This information is believed to be accurate at the time of printing and is subject to change without notice. Providing this information does not convey any licenses under any patent rights or intellectual property rights of Tri-Seal or others. TRI-SEAL MAKES NO WARRANTY, EXPRESS OR IMPLIED, WITH RESPECT TO THIS INFORMATION AND DISCLAIMS ALL LIABILITY FROM RELIANCE ON IT. Tri-Seal's only warranties for this product are those written warranties as may be agreed to by Tri-Seal and its customers. TRI-SEAL SPECIFICALLY DISCLAIMS ALL OTHER WARRANTIES, EXPRESS OR IMPLIED, WITH RESPECT TO THE PRODUCT, INCLUDING, BUT NOT LIMITED TO, WARRANTIES OF MERCHANTABILITY AND FITNESS FOR PARTICULAR PURPOSE.