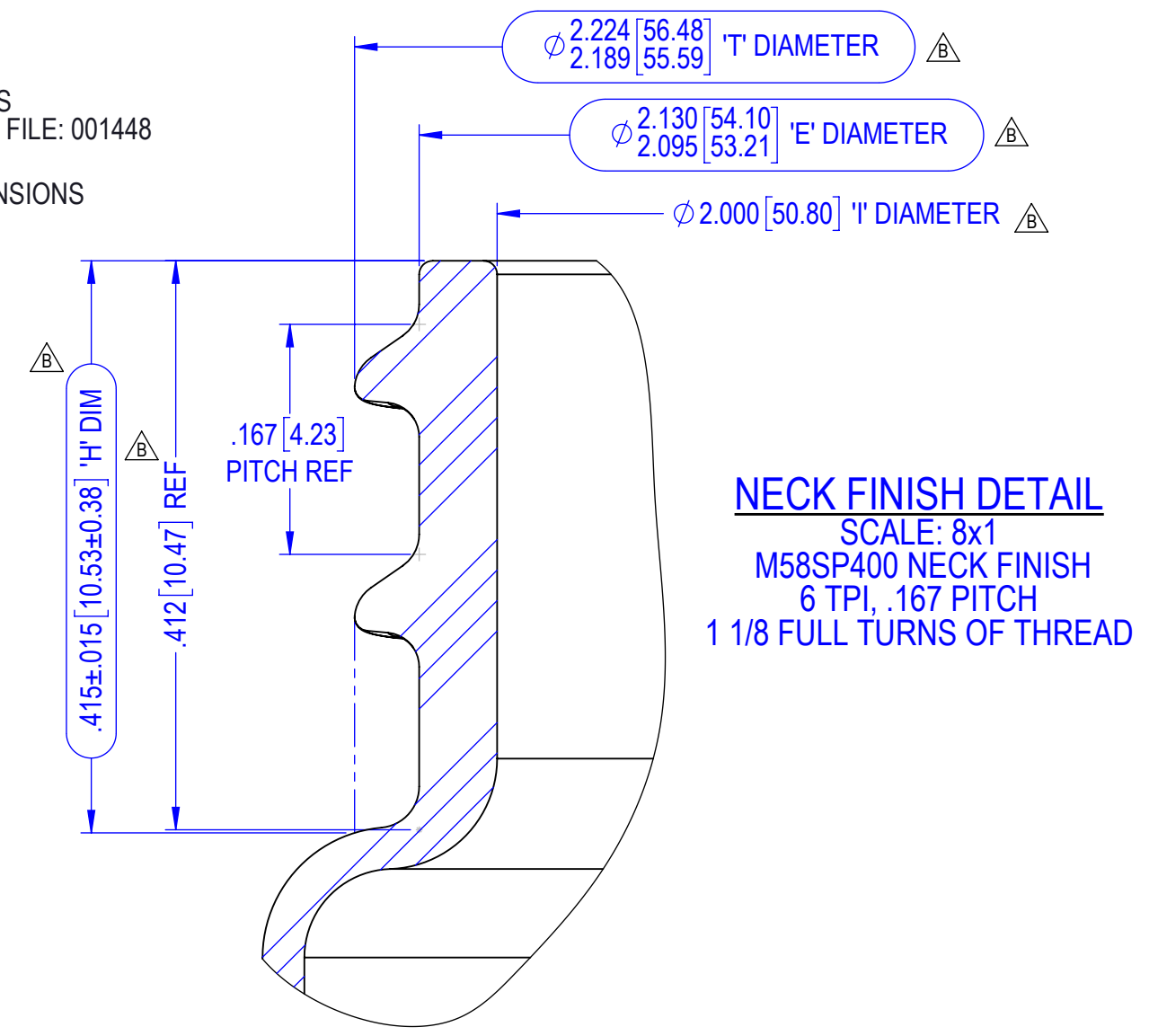
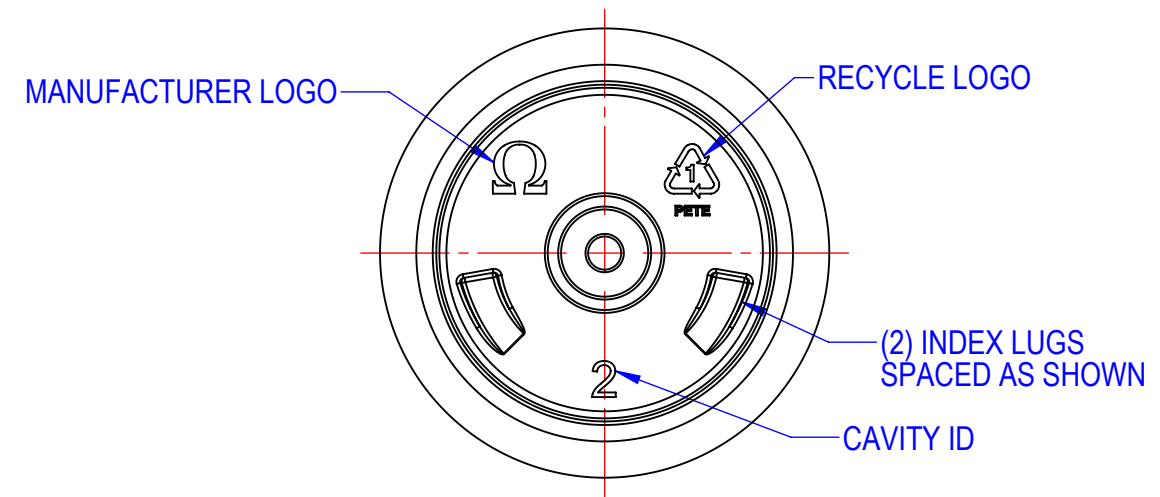
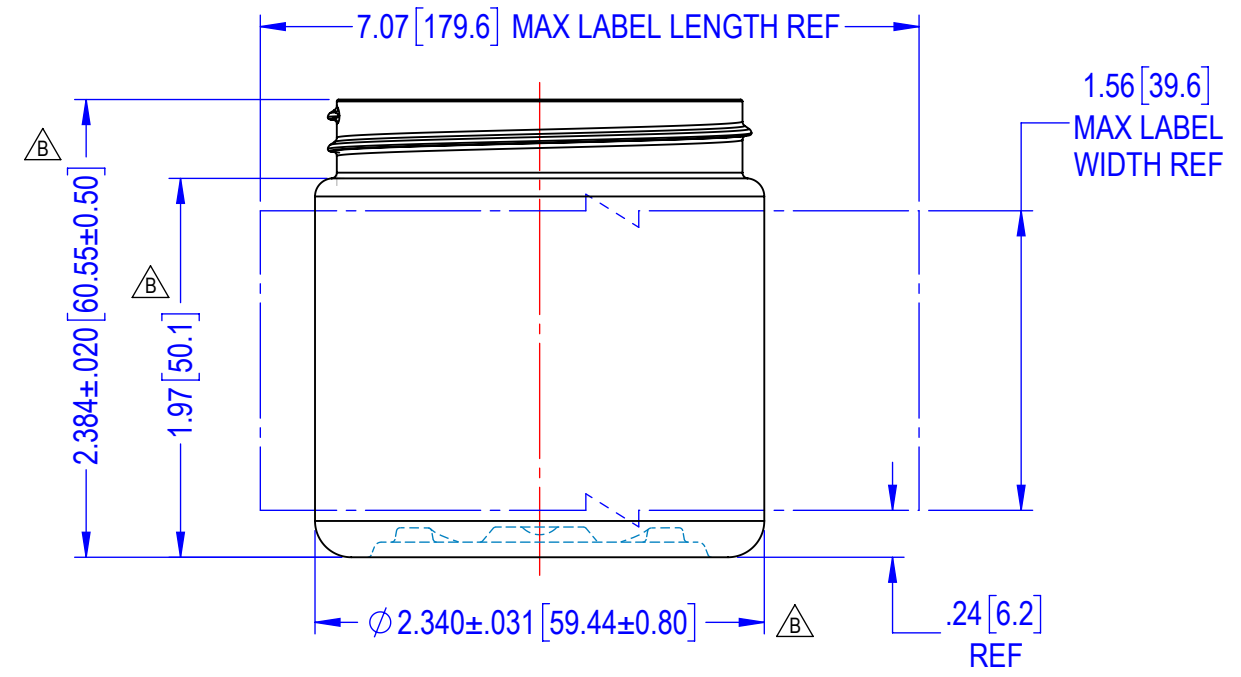
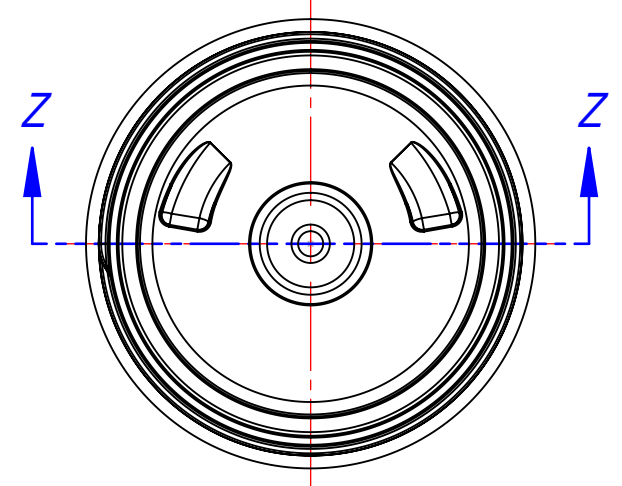


- NOTES:** \triangle
1. MATERIAL: PET
 2. GRAM WEIGHT: {17.0 GRAMS \pm 1.0 GRAMS}
 3. CAPACITY: 4.90oz \pm 0.17oz [145.0cc \pm 5.0cc] TO OVERFLOW
 4. DIMENSIONS SHOWN IN [] ARE EXPRESSED IN MILLIMETERS
 5. FOR ALL UNSPECIFIED GEOMETRY, REFERENCE 3D MODEL FILE: 001448
 6. (BOXED) DIMENSIONS ARE CRITICAL TO PART FUNCTION
 7. {BRACKETED} DIMENSIONS ARE MAJOR INSPECTION DIMENSIONS



B	PRODUCTION RELEASE UPDATE TITLE BLOCK DWG: 71-1740 WAS SK-8209 REV A ADDED PART NO: 71-1740 ADDED MOLD NO: MB2576 OAH: 2.384 \pm .031 WAS 2.370 \pm .031 BODY DIA: ϕ 2.340 \pm .031 WAS ϕ 2.339 \pm .031 'T' DIA: 2.224 MAX/2.189 MIN WAS 2.207 \pm .016 'E' DIA: 2.130 MAX/2.095 MIN WAS 2.113 \pm .016 'I' DIA: ϕ 2.000 WAS ϕ 2.003 'H' DIM: .415 \pm .015 WAS .420 \pm .015 REMOVE 'S' DIM: .046 \pm .015 1.97 WAS 1.95 REMOVED WALL THICKNESS VARIATION, MIN WALL IN LABEL AREA, MIN HEEL WALL, MAX TAPER & MAX PERPENDICULARITY NOTES REMOVE PREVIOUS REVISION FOR CLARITY	8/25/2022	JL	MMR
	REV.	DESCRIPTION	DATE	APPROVED

DRAWING IS IN INCHES [MILLIMETERS] ARE FOR REFERENCE ONLY	THIS DRAWING CONTAINS CONFIDENTIAL & PROPRIETARY INFORMATION AND MAY NOT BE REPRODUCED IN WHOLE OR PART WITHOUT WRITTEN AUTHORIZATION FROM COMAR LLC			TITLE 4oz JAR M58SP400 FINISH		COMAR™ 220 LAUREL ROAD VOORHEES, NJ 08043	
	TOLERANCES UNLESS OTHERWISE SPECIFIED	NAME	DATE	MOLD NO	PDM NO	SCALE	
3 PLACE INCH \pm .015 2 PLACE INCH \pm .03 ANGLES \pm 2°	DRAWN BY	BMG	04/06/2022	MB2576	001448	1:1	
DO NOT SCALE DRAWING	CHECKED	TB	04/19/2022	COMMENTS	PART NO		
	ENG APPR	JB	08/25/2022	STATUS	DWG NO		
				STOCK	SIZE	SHEET	REV
					B	1 OF 1	B