



Product Data Sheet

MRP-PP30-1 Grade

Polypropylene, Homopolymer Plastic Resin

Product Description

MRP-PP30-1 is a high flow polypropylene homopolymer resin designed for injection molding applications requiring good balance stiffness, excellent part finish, process ability, and good mold release.

Compliant to the Following Regulatory Standards:

FDA-21 CFR 177.1520(c)

EU 10/2011, EC 2002/72

RoHS

Proposition 65

CONEG/Heavy Metal

Typical Properties	Method	Typical Value	Unit
Physical			
Melt Mass-Flow Rate (MFR) (230°C/2.16 kg)	ASTM D1238	30	g/10 min
Mechanical			
Tensile Strength (50mm/min) (Yield)	ASTM D 638	33.1	MPa
Tensile Elongation (50mm/min) (Yield)	ASTM D 638	10	%
Flexural Modulus – 1% Secant (1.3 mm/min)	ASTM D790A	1380	MPa
Hardness, Rockwell R	ASTM D785	104	-
Impact			
Notched Izod impact (23 °C, Method A)	ASTM D 256A	37	J/m
Thermal			
Heat Deflection (Softening Point) Unannealed DTLU @ 66psi	ASTM D 648	91	°C
Processing Range	----	400 – 500	°F


For further regulatory information contact MRP Solutions customer service or sales department.

Notes:

These are typical properties not to be construed as specifications.

MRP Solutions warrants this grade to meet typical data values and physical, chemical, and processing properties.

All results were obtained from manufacturer product data sheets (where applicable). The data are intended as a general guide, only, and do not necessarily represent results that may be obtained, elsewhere. The use of MRP Solutions products must be guided by the users' own methods for selection of proper formulation. MRP Solutions disclaims any responsibility for misuse or misapplication of its products. MRP Solutions' liability and customer's exclusive remedy for any claims arising out of sales of its products are expressly limited to customer option for replacement (not to exceed the purchase price) with the addition of transportation charges, on material for which damage is claimed.

	Raw Material Product Data Sheet	
	Product Name: MRPWH01	Revision #: A
	Revision Date	03/07/2019
	Effective Date	07/01/2019

Product Name:

MRPWH01

Product Description:

FDA Compliant White colorant, intended to be used with injection-molded plastic resin

Product Data:

Additives None

<u>Typical Properties</u>	<u>Typical Value</u>
Visual Evaluation	Visual match to approved color standard

<u>FDA Compliance/Status</u>		
FDA, Title 21 CFR Food & Drug Contact	<input checked="" type="checkbox"/> Compliant	<input type="checkbox"/> Not

This colorant formulation has been manufactured using FDA approved ingredients and, when used appropriately (with an FDA approved resin), will meet FDA contact applications regulated under the provisions of the Food, Drug, and Cosmetic Act (and subsequent amendments as outlined in Title 21 of the Code of Federal Regulation.

<u>Additional Compliance/Status (and amendments as of the date of this document)</u>		
Proposition 65, Safe Drinking Water and Toxic Enforcement Act	<input checked="" type="checkbox"/> Compliant	<input type="checkbox"/> Not
CONEG, Model Toxics in Packaging Legislation	<input checked="" type="checkbox"/> Compliant	<input type="checkbox"/> Not
EU 2015/863, as regards the list of restricted substances, RoHS	<input checked="" type="checkbox"/> Compliant	<input type="checkbox"/> Not

For further regulatory information, please contact Mold Rite Plastic's customer service or sales department.

This product data sheet addresses all colorants that meet the above requirements & specifications. Data was obtained from supplier product data sheets (where applicable). This data is intended to be used as a guide only. It is ultimately the customer's responsibility to determine the suitability of the material for their specific application, and to be responsible for assuring compliance with all applicable laws and regulations.

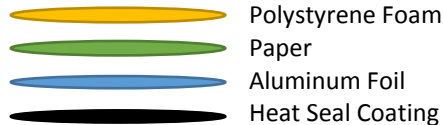


Liner Product Data Sheet

Title: (A01)MRPLN04.020 FOAM R SFYP

Description of Product: Universal Heat Seal Foam Liner

Detailed Product Description: This product is a one piece universal heat seal consisting of foam backing, paper, aluminum foil and heat seal layer.



Regulatory Compliance:

21 CFR 177.1210 Closures with sealing gaskets for food containers.

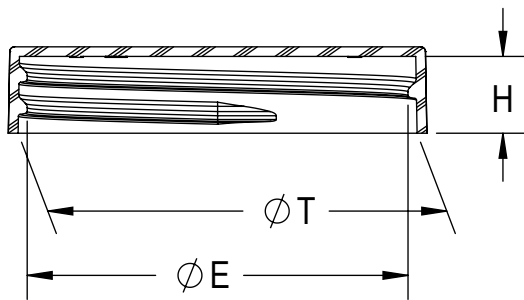
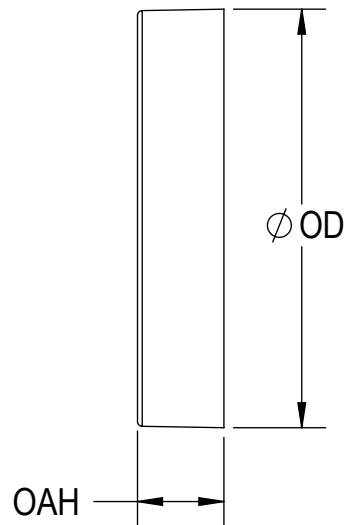
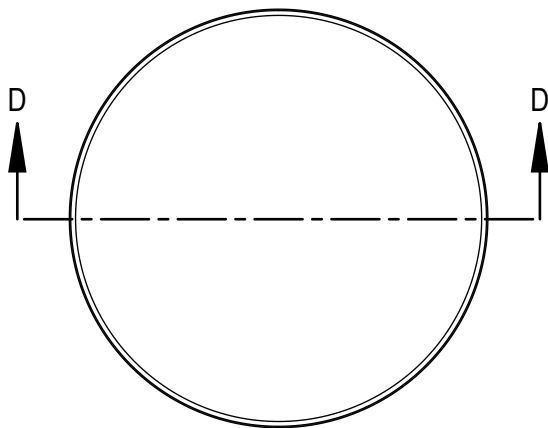
Typical Properties: This specification, designated by Mold-Rite Plastics, includes all liners that meet the typical value data listed below:

Typical Properties	Typical Value
Overall Thickness <ul style="list-style-type: none">• Polystyrene Foam• Paper• Aluminum Foil• Heat Seal Coating	0.024 inch +/- 10% <ul style="list-style-type: none">• .0200 inch• .0025 inch• .0003 inch• .0015 inch
Drug Master File	16574
Printed	"SEALED FOR YOUR PROTECTION"
Print Color	Red
Oxygen Transmission	Essentially Zero
Water Vapor Transmission	Essentially Zero

Disclaimers:

1. These are typical properties.
2. All data values and regulatory requirements were obtained from manufacturer product data sheets (where applicable).
3. Product data sheets data are intended as a general guide only and do not necessarily represent results that may be obtained elsewhere.
4. Use of Mold-Rite Plastics products must be guided by users' methods for selection of proper formulation.
5. Mold-Rite Plastics disclaims any responsibility for misuse or misapplication of its products.
6. Mold-Rite Plastics liability and customer's exclusive remedy for any claims arising out of sales of its products are expressly limited at: customer option for replacement not to exceed the purchase price plus transportation charges thereon.

Rev. 071818



SECTION D-D

THREAD DETAIL INFORMATION
6 THREADS PER INCH, 0.167 PITCH

REFERENCE	TOLERANCE	DIMENSION	UNITS
E	±0.015 [0.38]	1.984 [50.39]	in [mm]
T	±0.015 [0.38]	2.078 [52.78]	in [mm]
H	±0.010 [0.25]	0.400 [10.16]	in [mm]
OAH	±0.010 [0.25]	0.450 [11.43]	in [mm]
OD	±0.015 [0.38]	2.180 [55.37]	in [mm]
PART WEIGHT	± 0.80	5.10	g

STATIC TORQUE RECOMMENDATION

21-36 in-lbs

THIS REQUIREMENT MAY VARY DEPENDING
UPON BOTTLE MATERIAL, NECK FINISH, AND
CAPPING EQUIPMENT

DRAWING TYPE : CUSTOMER

REPLACES DRAWINGS:
C-1012

DIMENSIONS ENCLOSED IN ()
INDICATE REFERENCE
DIMENSIONS AND NO TOLERANCE
LIMITS ARE ESTABLISHED

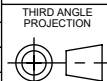
TOLERANCES UNLESS OTHERWISE SPECIFIED

DIMENSION (inches)	TOLERANCE	DIMENSION (mm)	TOLERANCE
0-0.787	±0.006	0-20	±0.152
0.788-1.181	±0.008	21-30	±0.203
1.182-2.756	±0.012	31-70	±0.305
2.757-3.937	±0.016	71-100	±0.406
3.938-5.096	±0.020	101-150	±0.508
5.097-7.874	±0.024	151-200	±0.610
7.875-9.843	±0.032	201-250	±0.813

ANGULAR TOLERANCE ± 2°

PROPRIETARY AND CONFIDENTIAL

THIS DRAWING IS PROTECTED BY COPYRIGHT AND CONTAINS INFORMATION
PROPRIETARY TO MOLD-RITE, WEATHERCHEM AND STULL TECHNOLOGIES.
ANY REPRODUCTION, DISCLOSURE, OR USE OF ITS CONTENTS OR ANY PART
THEREOF IS EXPRESSLY PROHIBITED EXCEPT AS MOLD-RITE, WEATHERCHEM
AND STULL TECHNOLOGIES OTHERWISE MAY AGREE IN WRITING



DRAWN BY: DAS

3/1/2017

ENG APPR. JDM

4/4/2018

QA APPR. REL

05/02/2018

DISTRIBUTION
CODE
D

DRAWING NAME

53-400 CT
S (SMOOTH SIDE, SMOOTH TOP)

DRAWING NUMBER

CQA - 10509

MATERIAL

POLYPROPYLENE

MODEL NUMBER:

PM 10504 53-400 CT

SCALE

SHEET SIZE

SHEET

REV.NP

1:1

8.5 X 11

1 of 3

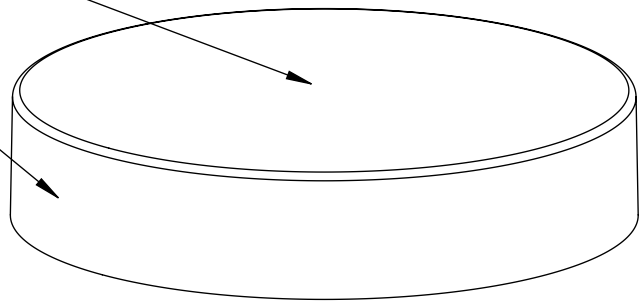
00.AB

THE CLOSURE DIMENSIONS
DEPICTED ARE THOSE WHICH HAVE GENERALLY BEEN
FOUND TO BE FUNCTIONAL BASED ON INDUSTRY
EXPERIENCE BECAUSE OF VARIABILITY IN GLASS AND
PLASTIC CONTAINER FINISHES, EACH CLOSURE/FINISH
SYSTEM SHOULD BE INDIVIDUALLY EVALUATED AND
TESTED TO ENSURE IT MEETS APPLICABLE
PERFORMANCE CRITERIA. SEE QUALITY ASSURANCE
SPECIFICATIONS FOR ADDITIONAL INFORMATION.

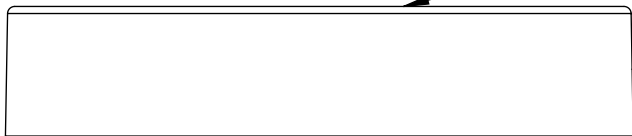
MOLD-RITE, WEATHERCHEM AND STULL TECHNOLOGIES
RESERVES THE RIGHT TO REVISE ANY OR ALL
SPECIFICATIONS AND REQUIREMENTS.

REVISIONS					
DATE	REV.	N/P	DESCRIPTION	ENG	DRW
3/1/2017	00	AA	UPDATED DRAWING FORMAT AND ASSIGNED NEW DRAWING NUMBER	JDM	DAS
4/4/2018	00	AB	ADDED GATE LOCATION TABLE. SPECIFICATIONS UPDATED BASED ON PRODUCTION CAPABILITY. NO STEEL CHANGES HAVE OCCURED.	JDM	DAS

SEE TABLE FOR
GATE LOCATION



SMOOTH SIDES AND TOP




MOLD NUMBER	GATE LOCATION
53001	SIDE
53002	SIDE
53006	SIDE
53008	SIDE
53013	TOP

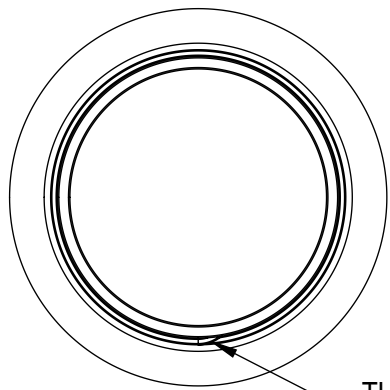
THE CLOSURE DIMENSIONS
DEPICTED ARE THOSE WHICH HAVE GENERALLY BEEN
FOUND TO BE FUNCTIONAL BASED ON INDUSTRY
EXPERIENCE BECAUSE OF VARIABILITY IN GLASS AND
PLASTIC CONTAINER FINISHES, EACH CLOSURE/FINISH
SYSTEM SHOULD BE INDIVIDUALLY EVALUATED AND
TESTED TO ENSURE IT MEETS APPLICABLE
PERFORMANCE CRITERIA. SEE QUALITY ASSURANCE
SPECIFICATIONS FOR ADDITIONAL INFORMATION.

MOLD-RITE, WEATHERCHEM AND STULL TECHNOLOGIES
RESERVES THE RIGHT TO REVISE ANY OR ALL
SPECIFICATIONS AND REQUIREMENTS.

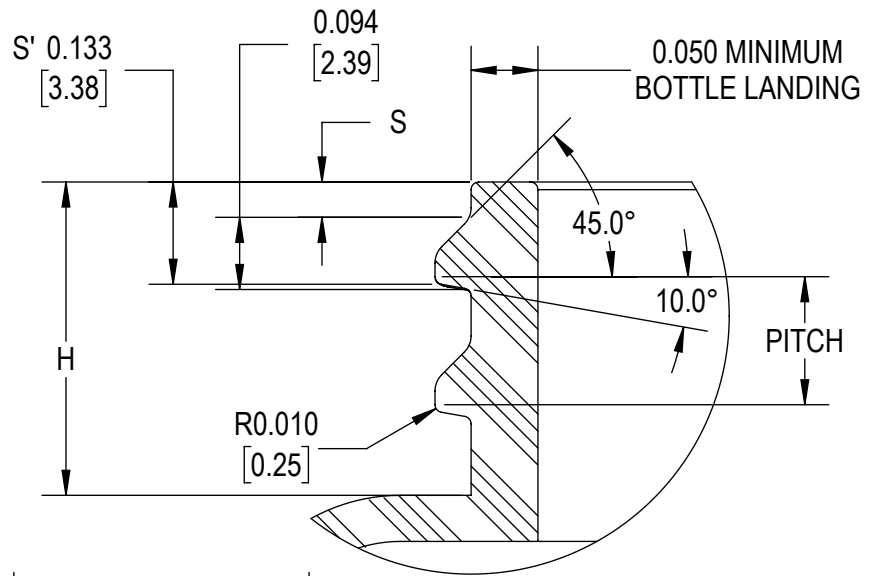
DRAWING TYPE : CUSTOMER			
REFERENCES: 53001, 53002, 53006, 53008, 53013		DIMENSIONS ENCLOSED IN () INDICATE REFERENCE DIMENSIONS AND NO TOLERANCE LIMITS ARE ESTABLISHED	
TOLERANCES UNLESS OTHERWISE SPECIFIED			
DIMENSION (inches)	TOLERANCE	DIMENSION (mm)	TOLERANCE
0-0.787	±0.006	0-20	±0.152
0.788-1.181	±0.008	21-30	±0.203
1.182-2.756	±0.012	31-70	±0.305
2.757-3.937	±0.016	71-100	±0.406
3.938-5.096	±0.020	101-150	±0.508
5.097-7.874	±0.024	151-200	±0.610
7.875-9.843	±0.032	201-250	±0.813
ANGULAR TOLERANCE ± 2°			
PROPRIETARY AND CONFIDENTIAL			
THIS DRAWING IS PROTECTED BY COPYRIGHT AND CONTAINS INFORMATION PROPRIETARY TO MOLD-RITE, WEATHERCHEM AND STULL TECHNOLOGIES. ANY REPRODUCTION, DISCLOSURE, OR USE OF ITS CONTENTS OR ANY PART THEREOF IS EXPRESSLY PROHIBITED EXCEPT AS MOLD-RITE, WEATHERCHEM AND STULL TECHNOLOGIES OTHERWISE MAY AGREE IN WRITING			



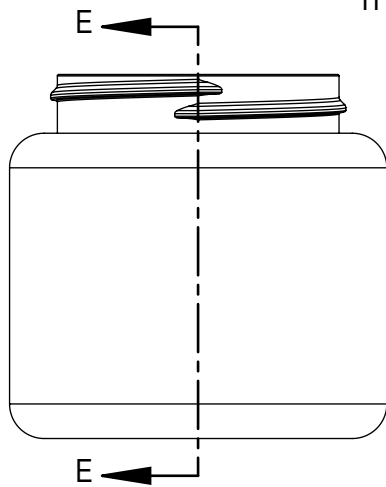
<div>THIRD ANGLE PROJECTION</div> <div></div> <div>SOLIDWORKS</div>		<div>DISTRIBUTION CODE</div> <div>D</div>	<div>DRAWING NAME</div> <div>53-400 CT</div> <div>S (SMOOTH SIDE, SMOOTH TOP)</div>			
			<div>DRAWING NUMBER</div> <div>CQA - 10509</div>			
<div>DRAWN BY.</div> <div>DAS</div>	<div>3/1/2017</div>	<div>MATERIAL</div> <div>POLYPROPYLENE</div>				
<div>ENG APPR.</div> <div>JDM</div>	<div>4/4/2018</div>	<div>MODEL NUMBER:</div> <div>PM 10504 53-400 CT</div>				
<div>QA APPR.</div> <div>REL</div>	<div>05/02/2018</div>	<div>SCALE</div> <div>3:2</div>	<div>SHEET SIZE</div> <div>8.5" X 11"</div>	<div>SHEET</div> <div>2 of 3</div>	<div>REV.NP</div> <div>00.AB</div>	



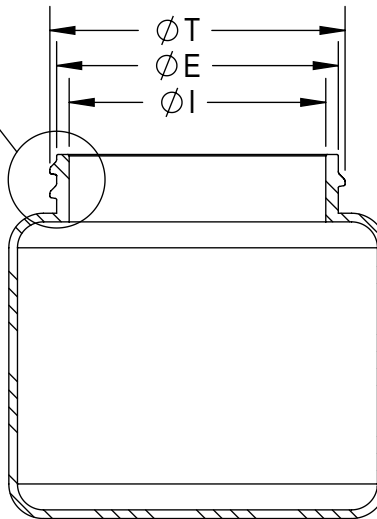
THREAD START



DETAIL THREAD
SCALE 4 : 1



THREAD



SECTION E-E

REFERENCE	TOLERANCE	UNITS	DIMENSION
E	±0.017 [0.43]	in [mm]	1.956 [49.68]
T	±0.017 [0.43]	in [mm]	2.050 [52.07]
I	MIN	in [mm]	1.578 [40.08]
S	±0.015 [0.38]	in [mm]	0.046 [1.17]
H	MIN	in [mm]	0.408 [10.36]
PITCH		in [mm]	6
TPI			0.167

NOTE: THE NOMINAL ORIENTATION ILLUSTRATED IS BASED ON NOMINAL DIMENSIONS OF BOTH THE CLOSURE AND THE RECOMMENDED NECK FINISH. FOR EXACT ORIENTATION EACH BOTTLE SHOULD BE EVALUATED ON A CASE BY CASE BASIS.

DRAWING TYPE : CUSTOMER

DIMENSIONS ENCLOSED IN ()
INDICATE REFERENCE
DIMENSIONS AND NO TOLERANCE
LIMITS ARE ESTABLISHED

TOLERANCES UNLESS OTHERWISE SPECIFIED

DIMENSION (inches)	TOLERANCE	DIMENSION (mm)	TOLERANCE
0-0.787	±0.006	0-20	±0.152
0.788-1.181	±0.008	21-30	±0.203
1.182-2.756	±0.012	31-70	±0.305
2.757-3.937	±0.016	71-100	±0.406
3.938-5.096	±0.020	101-150	±0.508
5.097-7.874	±0.024	151-200	±0.610
7.875-9.843	±0.032	201-250	±0.813

ANGULAR TOLERANCE ± 2°

PROPRIETARY AND CONFIDENTIAL

THIS DRAWING IS PROTECTED BY COPYRIGHT AND CONTAINS INFORMATION PROPRIETARY TO MOLD-RITE, WEATHERCHEM AND STULL TECHNOLOGIES. ANY REPRODUCTION, DISCLOSURE, OR USE OF ITS CONTENTS OR ANY PART THEREOF IS EXPRESSLY PROHIBITED EXCEPT AS MOLD-RITE, WEATHERCHEM AND STULL TECHNOLOGIES OTHERWISE MAY AGREE IN WRITING



SOLIDWORKS

DISTRIBUTION
CODE

D

DRAWING NAME

53-400 CT
RECOMMENDED NECK FINISH

DRAWING NUMBER

CQA - 10509

DRAWN BY.

DAS

3/1/2017

MATERIAL

ENG APPR.

JDM

4/4/2018

MODEL NUMBER:

QA APPR.

REL

05/02/2018

SCALE

3:4

SHEET SIZE

8.5X11

SHEET

3 of 3

REV/N/P

00.AB