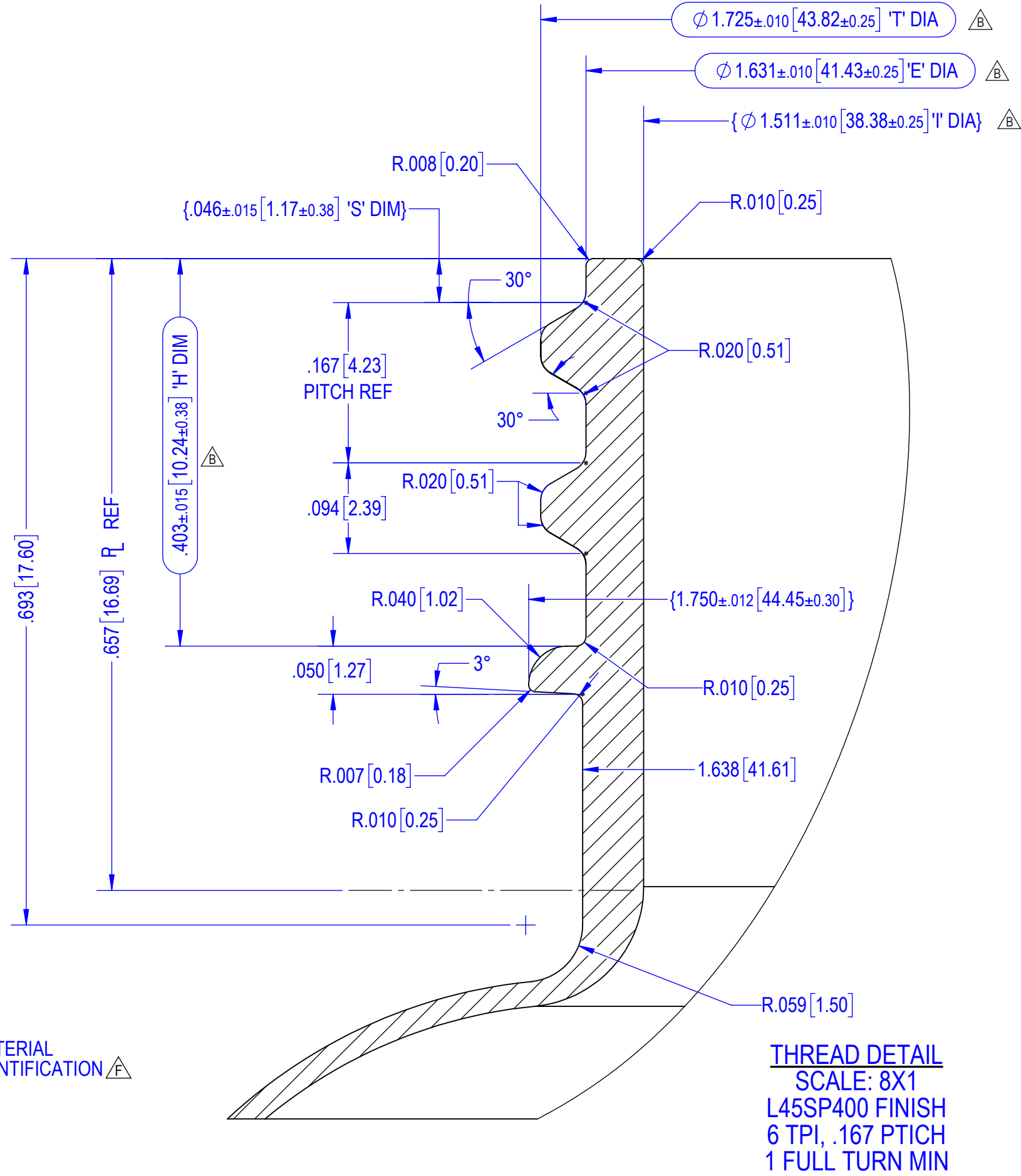


TERNATE BOTTOM VIEW

- NOTES:
1. MATERIAL: PET
 2. GRAM WEIGHT: {30.0 GRAMS ± 1.5 GRAMS}
 3. CAPACITY: 368mL ± 9mL TO OVERFLOW
 4. MAX TAPER = .003 / 1 [0.08 / 25.4]
 5. MAX PERPENDICULARITY = .005 / 1 [0.13 / 25.4]
 6. TOP LOAD > = 400N [90 LBS]
 7. MIN WALL THICKNESS IN LABEL AREA = .012 [0.30]
 8. MIN HEEL WALL THICKNESS = .012 [0.30]
 9. DIMENSIONS SHOWN IN [] ARE EXPRESSED IN MILLIMETERS FOR REFERENCE ONLY
 - 10.FOR ALL UNSPECIFIED GEOMETRY, REFERENCE 3D MODEL FILE: 71-0027_PZ-300 Round Bottle L45SP400_Stock
 - 11.ALL SURFACES TO HAVE 'A2' FINISH UNLESS NOTED
 12. (BOXED) DIMENSIONS ARE CRITICAL TO PART FUNCTION
 13. {BRACKETED} DIMENSIONS ARE MAJOR INSPECTION DIMENSIONS



THREAD DETAIL
SCALE: 8X1
L45SP400 FINISH
6 TPI, .167 PTCH
1 FULL TURN MIN

DRAWING IS IN INCHES [MILLIMETERS] ARE FOR REFERENCE ONLY		THIS DRAWING CONTAINS CONFIDENTIAL & PROPRIETARY INFORMATION AND MAY NOT BE REPRODUCED IN WHOLE OR PART WITHOUT WRITTEN AUTHORIZATION FROM COMAR LLC		TITLE PZ-300, 300mL ROUND L45SP400 NECK FINISH	
TOLERANCES UNLESS OTHERWISE SPECIFIED		MOLD NO MB2371, MB2716		PDM NO 102243	
3 PLACE INCH ± .020 2 PLACE INCH ± .04 ANGLES ± °		DRAWN BY KAD 12/08/2016		COMMENTS N/A	
DO NOT SCALE DRAWING		CHECKED RJH 12/08/2016		PART NO 71-0027	
		ENG APPR CCW 11/13/2024		STATUS STOCK	
		SIZE C		SHEET 1 OF 1	
		REV F			

F	UPDATE TO CURRENT STANDARDS AND TITLE BLOCK PDM NO: 102243 WAS 001009 ADDED MOLD NO: MB2716 CONVERTED FROM SK-8598 REV A ADDED ALTERNATE BOTTOM VIEW MATERIAL IDENTIFICATION WAS RECYCLE LOGO	11/13/2024	BMG	MR
E	INITIAL PDM RELEASE: 001009 REDEFINED NOTES REMOVED WALL VARIATION NOTE MIN WALL THK IN LABEL PANEL: .012 WAS .016	12/8/2021	NP	BMG
D	WEIGHT 30.0 G WAS 29.0 G	11/5/2019	BG	MMR
C	UPDATED TO CURRENT TITLEBLOCK CHANGED CUSTOMER TO STOCK ADDED PANEL VARIATION SPEC	10/26/2018	JB	BMG
B	2.719 ± .030 WAS 2.719 ± .040 4.719 ± .030 WAS 4.719 ± .060 1.725 ± .010 WAS 1.725 ± .012 1.631 ± .010 WAS 1.631 ± .012 1.511 ± .010 WAS 1.511 ± .012 WEIGHT 29.0 G WAS 30 G CAPACITY 368 mL WAS 364 mL CUST: PHARMAVITE WAS STOCK ADDED PHARMAVITE PART # REMOVED PANEL VARIATION SPEC	7/27/2018	BG	JDB
A	CAPACITY 364mL WAS 368mL GRAM WT 30g WAS 29g	6/6/2017	TKS	KAD

