

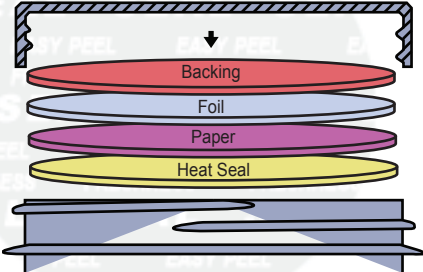


Freshness and Protection for Today's Packaging

# FoilSeal™ Technical Data Sheet

## .020" PS Foam FS 5-4

Revision: FS54-08202013

Product	.020" PS Foam FS 5-4																	
Scope	One piece foam backed heat induction foil innerseal which combines ease of removal with tamper-evident properties. It is suggested for sealing to PE, PP, PET, PVC, PS and properly treated glass containers. This material will vent gas through the paper layer and is suggeseted for use on dry products only.																	
Composition	<table><thead><tr><th>Material</th><th>Standard</th><th>Metric</th></tr></thead><tbody><tr><td>Backing</td><td>.020"</td><td>.508 mm</td></tr><tr><td>Foil</td><td>.001"</td><td>.0254 mm</td></tr><tr><td>Paper</td><td>.002"</td><td>.0508 mm</td></tr><tr><td>Heat Seal</td><td>.0015"</td><td>.0381 mm</td></tr></tbody></table>	Material	Standard	Metric	Backing	.020"	.508 mm	Foil	.001"	.0254 mm	Paper	.002"	.0508 mm	Heat Seal	.0015"	.0381 mm		
	Material	Standard	Metric															
Backing	.020"	.508 mm																
Foil	.001"	.0254 mm																
Paper	.002"	.0508 mm																
Heat Seal	.0015"	.0381 mm																
Adhesive or resin bonding layers not shown.																		
FDA Status: 21 CFR 177.1210	Recommended Storage and Handling: Refer to Website.																	
Drug Master File (DFM): #4544	EU / EP Reg.: Does not meet Article 3a of Reg. No. 2023/2006 and Article 3 of Reg. No. 1935/2004																	
GTR Oxygen: 77.0 cc Oxygen/100 IN2 * 24hrs. @ 100° F, ASTM F-1249		MVTR: 0.371 gm water/100IN2 * 24 hrs. @ 75° F, ASTM F-2622-08																
Sealing to glass containers: Selig can not guarantee the performance or seal integrity of this materials when applied to any glass (treated or untreated) container. We suggest you contact your glass supplier for recommendations on glass treatments that may or may not improve performance or seal integrity.																		
Print Location (if any): Foil Layer and/or Heat Seal Layer																		

Selig materials are compliant with current USFDA Food allergen Guidelines.

Selig materials are compliant with California Proposition 65 labeling requirements.

Selig materials are compliant with limitation of heavy metals in packaging per CONEG & EU 94/62/EC, article 11.

Recommended for use with dry food products. Is not suitable for use with fatty or alcoholic food types per ECC Reg. № 10/2011. Determining specific organoleptic compatibility per Article 3a of ECC Reg. № 2023/2006 is the responsibility of the food packager.

MSDS's are not required as Selig is not a chemical manufacturer or distributor and our products are 'articles' intended for food packaging per 29 CFR 1910.1200 (HazCom).

The information contained within this product data bulletin is to be used as a general guide in determining which structures are offered for sealing to specific container materials. All of the information which we provide is reliable to the best of our knowledge, but the accuracy thereof is not guaranteed. We suggest that consumers determine suitability for their own application.

[www.seligsealing.com](http://www.seligsealing.com)

Corporate Headquarters  
Selig Sealing Products, Inc.  
342 E Wabash St  
Forrest, IL 61741, USA  
Phone: +1 (815) 785-2100  
Fax: +1 (815) 657-7584

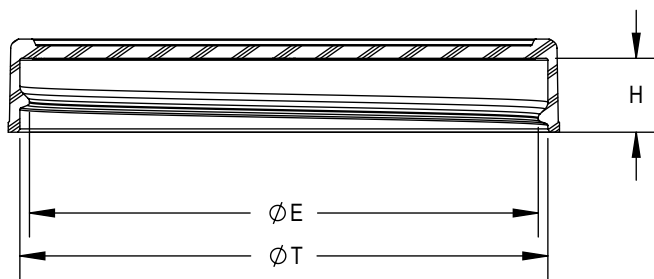
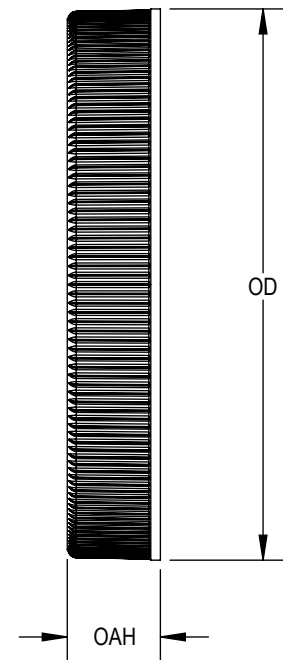
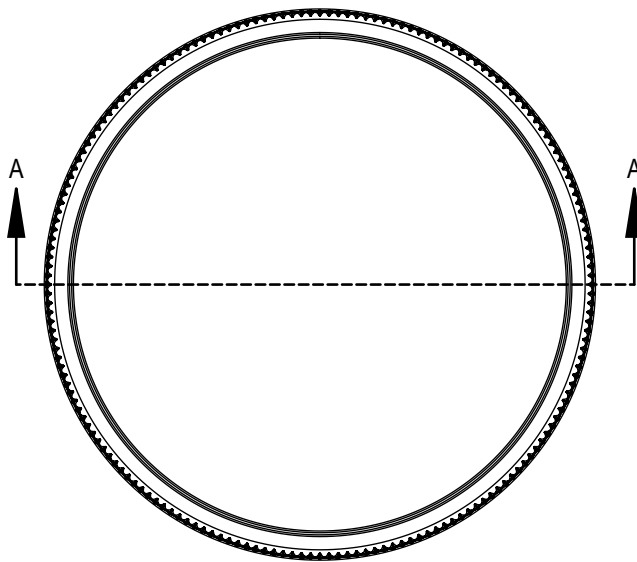
North American Sales  
Selig Sealing Products, Inc.  
184 Shuman Blvd., Suite 310  
Naperville, IL 60563, USA  
Phone: +1 (630) 922-3158  
Fax: +1 (630) 922-8469

European Sales and Manufacturing  
Selig UK, LTD 635-637 Ajax Avenue  
Slough Trading Estate  
Slough Berkshire SL14BH UK  
Phone: +44 (0) 1753 773 000  
Fax: +44 (0) 1753 773 111

Canadian Manufacturing  
Selig Canada, ULC  
145 Edward Street  
Aurora, Ontario Canada, L4G 1W3  
Phone: +1 (905) 727-0014  
Fax: +1 (905) 727-8544

Swiss Manufacturing  
Selig Switzerland LTD  
Bahnhofstrasse 11  
CH-8172 Niederglatt  
Phone: +41 (0) 44 851 50 50  
Fax: +41 (0) 44 851 50 51





SECTION A-A

THREAD DETAIL:  
6 THREADS PER INCH, 0.167" PITCH

REFERENCE	TOLERANCE	UNITS	DIMENSION
E	$\pm 0.015$ [0.38]	in [mm]	2.650 [67.31]
T	$\pm 0.020$ [0.51]	in [mm]	2.750 [69.85]
H	$\pm 0.015$ [0.38]	in [mm]	0.392 [9.96]
OAH	$\pm 0.020$ [0.51]	in [mm]	0.483 [12.26]
OD	$\pm 0.025$ [0.64]	in [mm]	2.875 [73.03]
PART WEIGHT	$\pm 1.5$	g	8.7

STATIC TORQUE RECOMMENDATION  
28-50 in-lbs  
THIS REQUIREMENT MAY VARY DEPENDING  
UPON BOTTLE MATERIAL, NECK FINISH, AND  
CAPPING EQUIPMENT

THE CLOSURE DIMENSIONS  
DEPICTED ARE THOSE WHICH HAVE GENERALLY BEEN  
FOUND TO BE FUNCTIONAL BASED ON INDUSTRY  
EXPERIENCE BECAUSE OF VARIABILITY IN GLASS AND  
PLASTIC CONTAINER FINISHES, EACH CLOSURE/FINISH  
SYSTEM SHOULD BE INDIVIDUALLY EVALUATED AND  
TESTED TO ENSURE IT MEETS APPLICABLE  
PERFORMANCE CRITERIA. SEE QUALITY ASSURANCE  
SPECIFICATIONS FOR ADDITIONAL INFORMATION.

MOLD-RITE, WEATHERCHEM AND STULL TECHNOLOGIES  
RESERVES THE RIGHT TO REVISE ANY OR ALL  
SPECIFICATIONS AND REQUIREMENTS.

DRAWING TYPE : CUSTOMER

REPLACES DRAWINGS:  
C-4015

DIMENSIONS ENCLOSED IN ( )  
INDICATE REFERENCE  
DIMENSIONS AND NO TOLERANCE  
LIMITS ARE ESTABLISHED

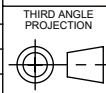
TOLERANCES UNLESS OTHERWISE SPECIFIED

DIMENSION (inches)	TOLERANCE	DIMENSION (mm)	TOLERANCE
0-0.787	$\pm 0.006$	0-20	$\pm 0.152$
0.788-1.181	$\pm 0.008$	21-30	$\pm 0.203$
1.182-2.756	$\pm 0.012$	31-70	$\pm 0.305$
2.757-3.937	$\pm 0.016$	71-100	$\pm 0.406$
3.938-5.096	$\pm 0.020$	101-150	$\pm 0.508$
5.097-7.874	$\pm 0.024$	151-200	$\pm 0.610$
7.875-9.843	$\pm 0.032$	201-250	$\pm 0.813$

ANGULAR TOLERANCE  $\pm 2^\circ$

PROPRIETARY AND CONFIDENTIAL

THIS DRAWING IS PROTECTED BY COPYRIGHT AND CONTAINS INFORMATION  
PROPRIETARY TO MOLD-RITE, WEATHERCHEM AND STULL TECHNOLOGIES.  
ANY REPRODUCTION, DISCLOSURE, OR USE OF ITS CONTENTS OR ANY PART  
THEREOF IS EXPRESSLY PROHIBITED EXCEPT AS MOLD-RITE, WEATHERCHEM  
AND STULL TECHNOLOGIES OTHERWISE MAY AGREE IN WRITING



SOLIDWORKS

DISTRIBUTION  
CODE

D

DRAWING NAME

70-400 CT CLOSURE  
RM (Ribbed Side - Matte Top)

DRAWING NUMBER

CQA - 10728

MATERIAL

POLYPROPYLENE

MODEL NUMBER:

PM 11104 70-400 CT

SCALE

1:1

SHEET SIZE

8.5" X 11"

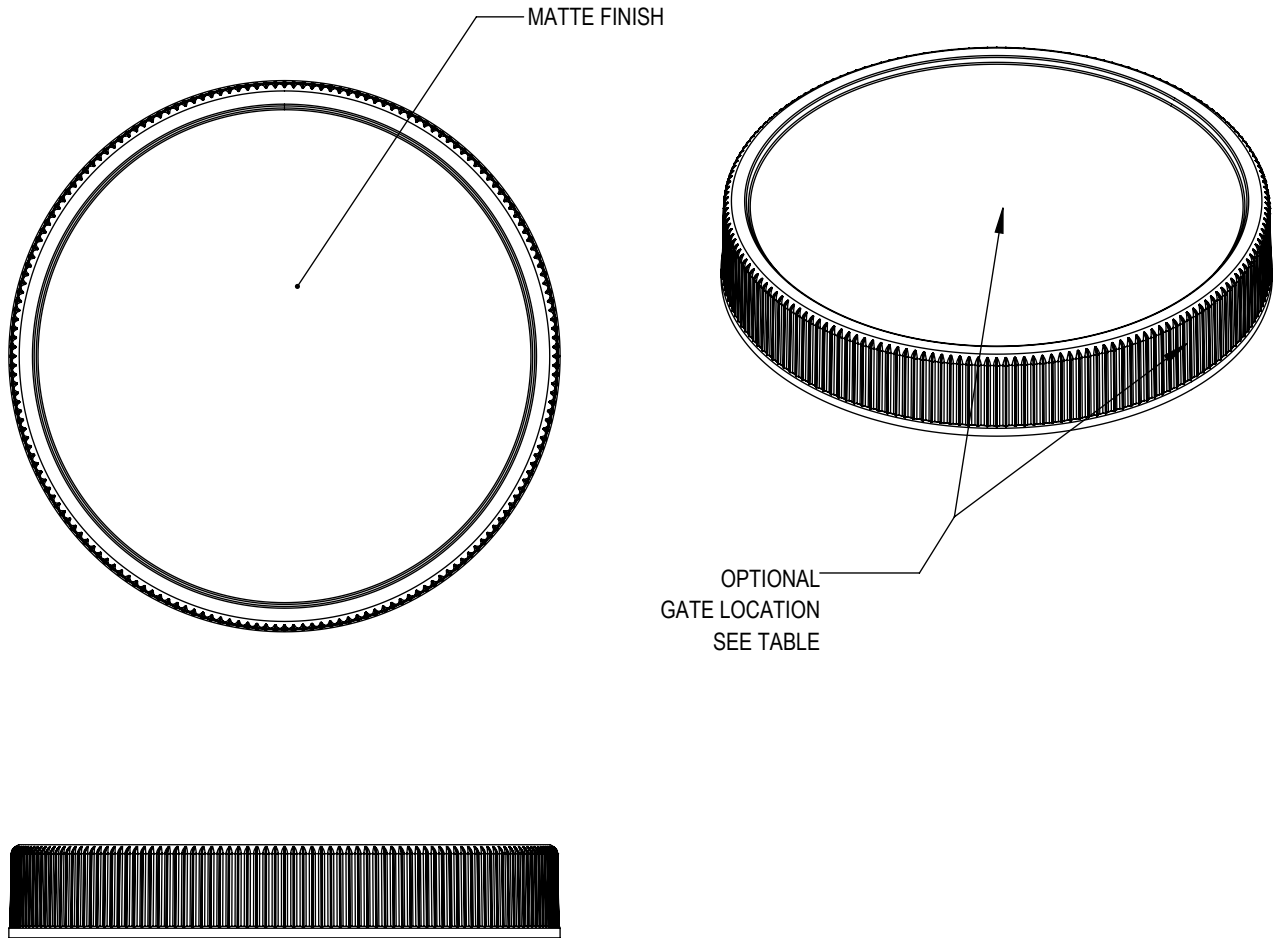
SHEET

1 of 3

REV.NP

00.AA

REVISIONS						
DATE	REV.	N/P	PRODUCT DRAWING REQUEST	DESCRIPTION	ENG	DRW
01/19/2018	00	AA	PDR 18-067	UPDATED FORMAT AND ASSIGNED NEW PART NUMBER. DIMENSIONAL SPECIFICATIONS UPDATED BASED ON PRODUCTION CAPABILITY. NO STEEL CHANGES OCCURED.	BDG	DAS



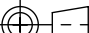
MOLD NUMBER	GATE LOCATION	
	SIDE	TOP
70003	X	
70007	X	
70008		X

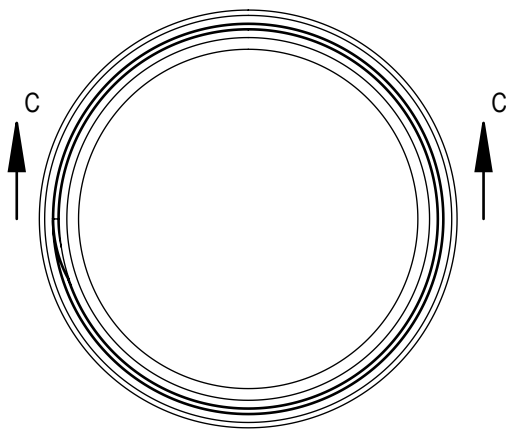
THE CLOSURE DIMENSIONS DEPICTED ARE THOSE WHICH HAVE GENERALLY BEEN FOUND TO BE FUNCTIONAL BASED ON INDUSTRY EXPERIENCE BECAUSE OF VARIABILITY IN GLASS AND PLASTIC CONTAINER FINISHES. EACH CLOSURE/FINISH SYSTEM SHOULD BE INDIVIDUALLY EVALUATED AND TESTED TO ENSURE IT MEETS APPLICABLE PERFORMANCE CRITERIA. SEE QUALITY ASSURANCE SPECIFICATIONS FOR ADDITIONAL INFORMATION.

MOLD-RITE, WEATHERCHEM AND STULL TECHNOLOGIES RESERVES THE RIGHT TO REVISE ANY OR ALL SPECIFICATIONS AND REQUIREMENTS.

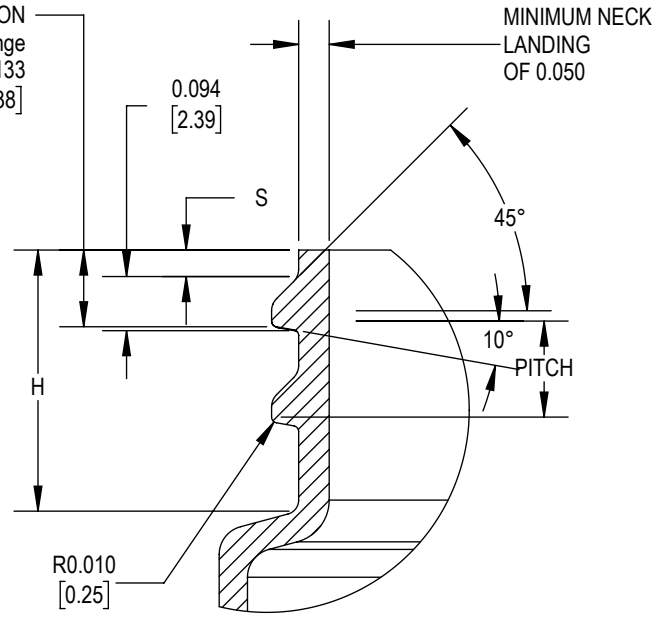
DRAWING TYPE : CUSTOMER			
REFERENCES: 70003 70007 70008		DIMENSIONS ENCLOSED IN ( ) INDICATE REFERENCE DIMENSIONS AND NO TOLERANCE LIMITS ARE ESTABLISHED	
TOLERANCES UNLESS OTHERWISE SPECIFIED			
DIMENSION (inches)	TOLERANCE	DIMENSION (mm)	TOLERANCE
0-0.787	±0.006	0-20	±0.152
0.788-1.181	±0.008	21-30	±0.203
1.182-2.756	±0.012	31-70	±0.305
2.757-3.937	±0.016	71-100	±0.406
3.938-5.096	±0.020	101-150	±0.508
5.097-7.874	±0.024	151-200	±0.610
7.875-9.843	±0.032	201-250	±0.813
ANGULAR TOLERANCE ± 2°			
PROPRIETARY AND CONFIDENTIAL			
THIS DRAWING IS PROTECTED BY COPYRIGHT AND CONTAINS INFORMATION PROPRIETARY TO MOLD-RITE, WEATHERCHEM AND STULL TECHNOLOGIES. ANY REPRODUCTION, DISCLOSURE, OR USE OF ITS CONTENTS OR ANY PART THEREOF IS EXPRESSLY PROHIBITED EXCEPT AS MOLD-RITE, WEATHERCHEM AND STULL TECHNOLOGIES OTHERWISE MAY AGREE IN WRITING			



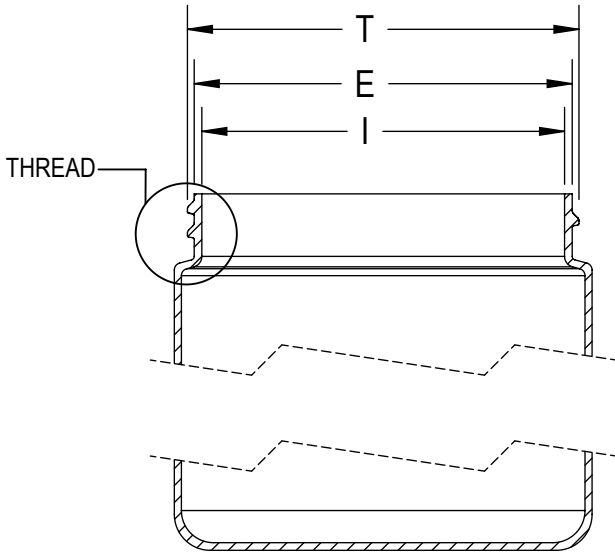
<div>THIRD ANGLE PROJECTION</div> <div></div> <div>SOLIDWORKS</div>		<div>DISTRIBUTION CODE</div> <div>D</div>		<div>DRAWING NAME</div> <div>70-400 CT CLOSURE RM (Ribbed Side - Matte Top)</div>			
				<div>DRAWING NUMBER</div> <div>CQA - 10728</div>			
<div>DRAWN BY.</div>	<div>DAS</div>	<div>6/3/2016</div>	<div>MATERIAL</div> <div>POLYPROPYLENE</div>				
<div>ENG APPR.</div>	<div>BDG</div>	<div>4/6/2018</div>	<div>MODEL NUMBER:</div> <div>PM 11104 70-400 CT</div>				
<div>QA APPR.</div>	<div>REL</div>	<div>08/13/2018</div>	<div>SCALE</div> <div>1:1</div>	<div>SHEET SIZE</div> <div>8.5 X 11</div>	<div>SHEET</div> <div>2 of 3</div>	<div>REV.NP</div> <div>00.AA</div>	



CRITICAL FOR ORIENTATION  
 .001" = 2 Degrees in Change  
 S' 0.133  
 [3.38]



DETAIL THREAD  
 SCALE 3 : 1



SECTION C-C

REFERENCE	TOLERANCE	UNITS	DIMENSION
E	±0.017 [0.43]	in [mm]	2.625 [66.68]
T	±0.017 [0.43]	in [mm]	2.719 [69.06]
I	MIN	in [mm]	2.232 [56.69]
S	±0.015 [0.38]	in [mm]	0.046 [1.17]
H	MIN	in [mm]	0.408 [10.36]
TPI			6
PITCH		in [mm]	0.167 [4.24]

NOTE: THE NOMINAL ORIENTATION ILLUSTRATED IS BASED ON NOMINAL DIMENSIONS OF BOTH THE CLOSURE AND THE RECOMMENDED NECK FINISH. FOR EXACT ORIENTATION EACH BOTTLE SHOULD BE EVALUATED ON A CASE BY CASE BASIS.

DRAWING TYPE : CUSTOMER

DIMENSIONS ENCLOSED IN ( ) INDICATE REFERENCE DIMENSIONS AND NO TOLERANCE LIMITS ARE ESTABLISHED

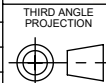
TOLERANCES UNLESS OTHERWISE SPECIFIED

DIMENSION (inches)	TOLERANCE	DIMENSION (mm)	TOLERANCE
0-0.787	±0.006	0-20	±0.152
0.788-1.181	±0.008	21-30	±0.203
1.182-2.756	±0.012	31-70	±0.305
2.757-3.937	±0.016	71-100	±0.406
3.938-5.096	±0.020	101-150	±0.508
5.097-7.874	±0.024	151-200	±0.610
7.875-9.843	±0.032	201-250	±0.813

ANGULAR TOLERANCE ± 2°

PROPRIETARY AND CONFIDENTIAL

THIS DRAWING IS PROTECTED BY COPYRIGHT AND CONTAINS INFORMATION PROPRIETARY TO MOLD-RITE, WEATHERCHEM AND STULL TECHNOLOGIES. ANY REPRODUCTION, DISCLOSURE, OR USE OF ITS CONTENTS OR ANY PART THEREOF IS EXPRESSLY PROHIBITED EXCEPT AS MOLD-RITE, WEATHERCHEM AND STULL TECHNOLOGIES OTHERWISE MAY AGREE IN WRITING



SOLIDWORKS

DISTRIBUTION CODE

D

DRAWING NAME

70-400 CT CLOSURE  
 RECOMMENDED NECK FINISH

DRAWING NUMBER

CQA - 10728

DRAWN BY.

DAS

6/3/2016

MATERIAL

ENG APPR.

BDG

4/6/2018

MODEL NUMBER:

QA APPR.

REL

08/13/2018

SCALE

SHEET SIZE

SHEET

REV/N/P

3:4

8.5 X 11

3 of 3

00.AA

THE CLOSURE DIMENSIONS DEPICTED ARE THOSE WHICH HAVE GENERALLY BEEN FOUND TO BE FUNCTIONAL BASED ON INDUSTRY EXPERIENCE BECAUSE OF VARIABILITY IN GLASS AND PLASTIC CONTAINER FINISHES, EACH CLOSURE/FINISH SYSTEM SHOULD BE INDIVIDUALLY EVALUATED AND TESTED TO ENSURE IT MEETS APPLICABLE PERFORMANCE CRITERIA. SEE QUALITY ASSURANCE SPECIFICATIONS FOR ADDITIONAL INFORMATION.

MOLD-RITE, WEATHERCHEM AND STULL TECHNOLOGIES RESERVES THE RIGHT TO REVISE ANY OR ALL SPECIFICATIONS AND REQUIREMENTS.