

SCALE 1:1

SECTION A-A

STATIC TORQUE RECOMMENDATION: 10-18 in-lbs
REQUIREMENT MAY VARY DEPENDING UPON CONTAINER MATERIAL, NECK FINISH, AND CAPPING EQUIPMENT

DIMENSIONS ENCLOSED IN () INDICATE REFERENCE DIMENSIONS AND NO TOLERANCE LIMITS ARE ESTABLISHED

DIMENSIONS PRECEDED BY AN "" INDICATE THE DIMENSION IS PROCESS SENSITIVE. PROCESS SENSITIVE DIMENSIONS ARE VERIFIED TO BE WITHIN THE TOLERANCE LIMITS DURING THE PRODUCTION RUN. ALL REMAINING DIMENSIONS ARE VERIFIED AT PRODUCTION VALIDATION.

PROPRIETARY AND CONFIDENTIAL

THIS DRAWING IS PROTECTED BY COPYRIGHT AND CONTAINS INFORMATION PROPRIETARY TO MOLD-RITE PLASTICS AND ITS SUBSIDIARIES. ANY REPRODUCTION, DISCLOSURE, OR USE OF ITS CONTENTS OR ANY PART THEREOF IS EXPRESSLY PROHIBITED EXCEPT AS MOLD-RITE PLASTICS AND ITS SUBSIDIARIES OTHERWISE MAY AGREE IN WRITING.

THIS MASTER DOCUMENT IS CONTROLLED ELECTRONICALLY. PRINTED OR DOWNLOADED COPIES ARE UNCONTROLLED. DOCUMENT USERS ARE RESPONSIBLE FOR ENSURING THEY HAVE THE LATEST REVISION PRIOR TO USE.

THE PART DIMENSIONS DEPICTED ARE THOSE WHICH HAVE GENERALLY BEEN FOUND TO BE FUNCTIONAL BASED ON INDUSTRY EXPERIENCE. BECAUSE OF VARIABILITY IN CONTAINER FINISHES, EACH CLOSURE/FINISH SYSTEM SHOULD BE INDIVIDUALLY EVALUATED AND TESTED TO ENSURE IT MEETS APPLICABLE PERFORMANCE CRITERIA.

MOLD-RITE PLASTICS AND ITS SUBSIDIARIES RESERVE THE RIGHT TO REVISE ANY OR ALL SPECIFICATIONS AND REQUIREMENTS.

REFERENCE

DIMENSION

TOLERANCE

UNITS

Ø E	0.868 [22.05]	±0.010 [0.25]	in [mm]
Ø T	0.955 [24.26]	±0.010 [0.25]	in [mm]
H	0.640 [16.26]	±0.010 [0.25]	in [mm]
OAH	0.690 [17.53]	±0.010 [0.25]	in [mm]
Ø OD	1.060 [26.92]	±0.010 [0.25]	in [mm]
PART WEIGHT	2.00	± 0.20	g

THREAD DETAIL INFORMATION:

8 THREADS PER INCH

0.125" [3.18] PITCH

420°

FULL DEPTH THREADS



DRAWING TITLE:

24-410 CT
RL (RIBBED SIDES, MATTE TOP)

MATERIAL: POLYPROPYLENE

DRAWING TYPE: CUSTOMER

DISTRIBUTION CODE: **D**

REPLACES DRAWINGS:

C-8029

MODEL NUMBER:

PM 10724 24-410 CT

DRAWN BY: LGF 2/6/2014

ENG APPR: CAN 3/24/2022

QA APPR: TEM 03/28/2022

DWG SIZE: 8.5" x 11"

SCALE: 2:1 & NOTED

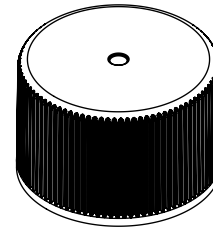
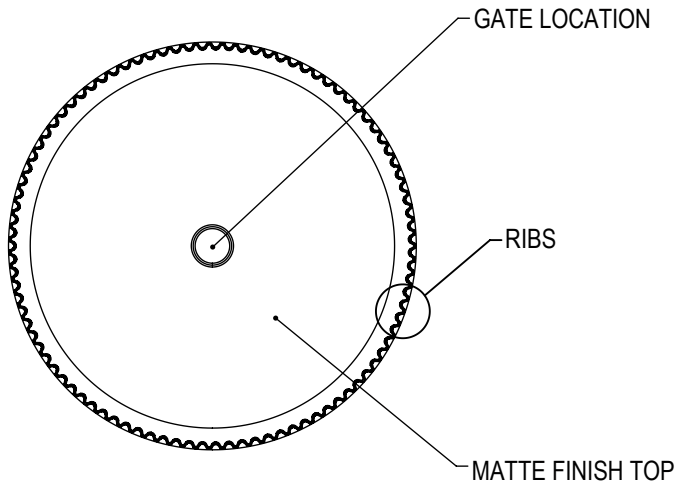
SHEET: 1 OF 3

DRAWING NUMBER:

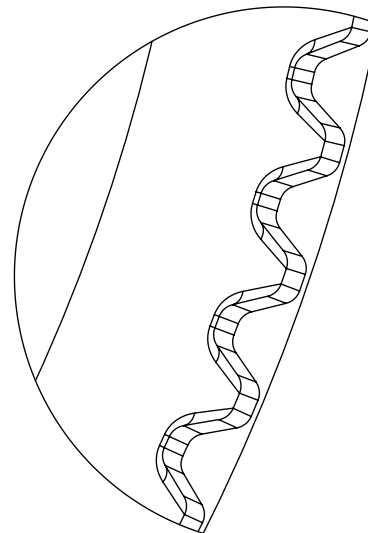
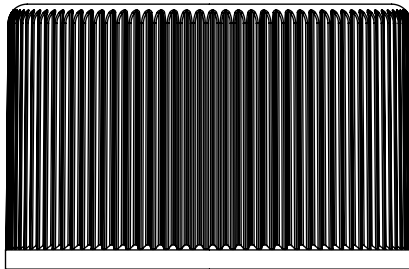
CQA-10006

REVISION:

01.AF



SCALE 1:1



DETAIL RIBS
SCALE 20 : 1
95 EQUISPACED RIBS

<p>DIMENSIONS ENCLOSED IN () INDICATE REFERENCE DIMENSIONS AND NO TOLERANCE LIMITS ARE ESTABLISHED</p> <p>PROPRIETARY AND CONFIDENTIAL</p> <p>THIS DRAWING IS PROTECTED BY COPYRIGHT AND CONTAINS INFORMATION PROPRIETARY TO MOLD-RITE PLASTICS AND ITS SUBSIDIARIES. ANY REPRODUCTION, DISCLOSURE, OR USE OF ITS CONTENTS OR ANY PART THEREOF IS EXPRESSLY PROHIBITED EXCEPT AS MOLD-RITE PLASTICS AND ITS SUBSIDIARIES OTHERWISE MAY AGREE IN WRITING</p> <p>THE PART DIMENSIONS DEPICTED ARE THOSE WHICH HAVE GENERALLY BEEN FOUND TO BE FUNCTIONAL BASED ON INDUSTRY EXPERIENCE BECAUSE OF VARIABILITY IN CONTAINER FINISHES. EACH CLOSURE/FINISH SYSTEM SHOULD BE INDIVIDUALLY EVALUATED AND TESTED TO ENSURE IT MEETS APPLICABLE PERFORMANCE CRITERIA.</p> <p>MOLD-RITE PLASTICS AND ITS SUBSIDIARIES RESERVE THE RIGHT TO REVISE ANY OR ALL SPECIFICATIONS AND REQUIREMENTS.</p>						
	06/19/2023	01	AF	UPDATE DRAWING FORMAT & LOGO	LES	LES
	03/21/2022	01	AE	UPDATED DRAWING FORMAT, ADDED RIB COUNT, CORRECTED H ON RNF (SHEET 3)	CAN	CAN
	04/05/2018	01	AD	CORRECTED RECOMMENDED NECK FINISH MODEL. SHEET 1 H DIMENSION CHANGED ORIGIN TO INSIDE CAP	BDG	DAS
	04/27/2016	01	AC	UPDATED DRAWING FORMAT	BDG	DAS
	11/04/2014	01	AB	UPDATED AS MOLDED (24101) DATA FROM 02/06/14 AND HISTORICAL DATA FROM 24007, ADDED OBSOLETE NOTE, REVISED RECOMMENDED NECK FINISH	LMB	LMB
	02/07/2014	01	AA	DRAWING CREATED	LGF	LGF
	DATE	REV	N/P	DESCRIPTION	ENG	DRW
<p>REVISIONS: REV: A PHYSICAL CHANGE TO THE PART IMPACTING FIT, FORM OR FUNCTION N/P: DRAWING OR SPECIFICATION CHANGE ONLY</p>						

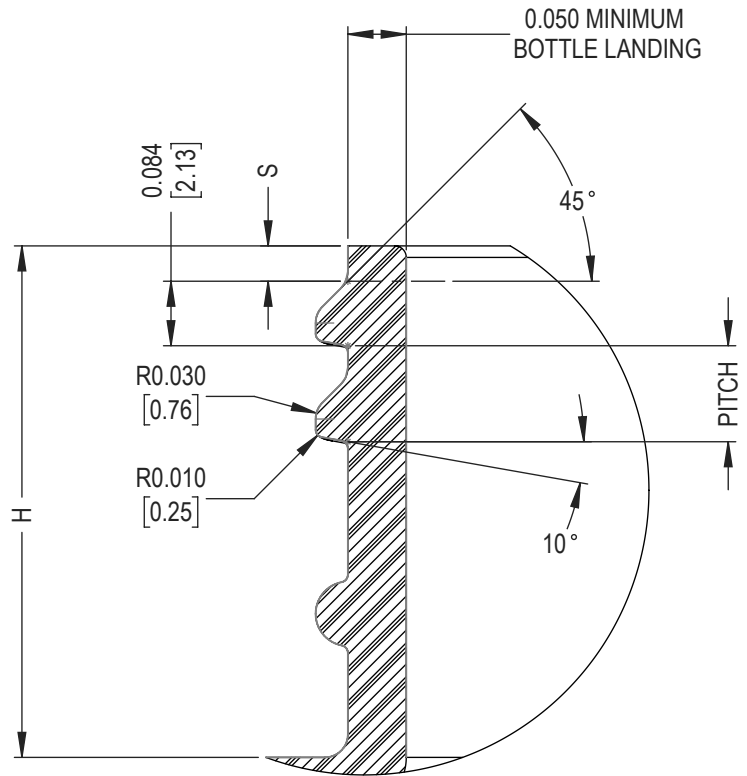
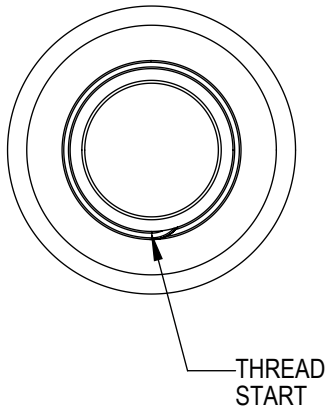


DRAWING TITLE:

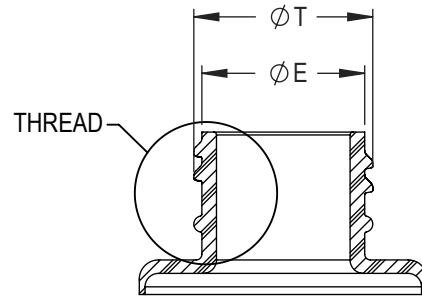
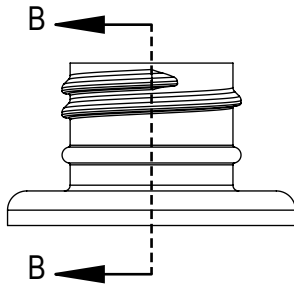
24-410 CT
RL (RIBBED SIDES, MATTE TOP)

THIS MASTER DOCUMENT IS CONTROLLED ELECTRONICALLY. PRINTED OR DOWNLOADED COPIES ARE UNCONTROLLED. DOCUMENT USERS ARE RESPONSIBLE FOR ENSURING THEY HAVE THE LATEST REVISION PRIOR TO USE.

DRAWING TYPE: CUSTOMER		DISTRIBUTION CODE: D	
DWG SIZE: 8.5" x 11"	DRAWING NUMBER:	REVISION:	
SCALE: 2:1 & NOTED	SHEET: 2 OF 3	CQA-10006	01.AF



DETAIL THREAD
SCALE 4 : 1



SECTION B-B

RECOMMENDED NECK FINISH IS DETERMINED FOR PROPER FUNCTIONAL PERFORMANCE WITH MOLD-RITE CLOSURE. USE OF MOLD-RITE CLOSURE WITH CONTAINER NOT MATCHING RECOMMENDED NECK FINISH SHOULD BE TESTED AND CONFIRMED FOR APPLICATION BY THE USER.

NOMINAL ORIENTATION OF CLOSURE (IF INDICATED) IS BASED ON NOMINAL DIMENSIONS OF BOTH CLOSURE AND RECOMMENDED NECK FINISH. FOR EXACT ORIENTATION, EACH CONTAINER SHOULD BE EVALUATED ON A CASE BY CASE BASIS.

DIMENSIONS ENCLOSED IN () INDICATE REFERENCE DIMENSIONS AND NO TOLERANCE LIMITS ARE ESTABLISHED

PROPRIETARY AND CONFIDENTIAL

THIS DRAWING IS PROTECTED BY COPYRIGHT AND CONTAINS INFORMATION PROPRIETARY TO MOLD-RITE PLASTICS AND ITS SUBSIDIARIES. ANY REPRODUCTION, DISCLOSURE, OR USE OF ITS CONTENTS OR ANY PART THEREOF IS EXPRESSLY PROHIBITED EXCEPT AS MOLD-RITE PLASTICS AND ITS SUBSIDIARIES OTHERWISE MAY AGREE IN WRITING

THE PART DIMENSIONS DEPICTED ARE THOSE WHICH HAVE GENERALLY BEEN FOUND TO BE FUNCTIONAL BASED ON INDUSTRY EXPERIENCE. BECAUSE OF VARIABILITY IN CONTAINER FINISHES, EACH CLOSURE/FINISH SYSTEM SHOULD BE INDIVIDUALLY EVALUATED AND TESTED TO ENSURE IT MEETS APPLICABLE PERFORMANCE CRITERIA.

MOLD-RITE PLASTICS AND ITS SUBSIDIARIES RESERVE THE RIGHT TO REVISE ANY OR ALL SPECIFICATIONS AND REQUIREMENTS.

NECK FINISH DIMENSIONS ASSUME ZERO THICKNESS (NO) LINER

REFERENCE	DIMENSION	TOLERANCE	UNITS
Ø E	0.848 [21.54]	±0.008 [0.20]	in [mm]
Ø T	0.932 [23.67]	±0.008 [0.20]	in [mm]
S	0.046 [1.17]	±0.015 [0.38]	in [mm]
H	0.650 [16.51]	MINIMUM	in [mm]
THREADS PER INCH	8		
PITCH	0.125 [3.18]		in [mm]



DRAWING TITLE:

24-410 CT

**RL (RIBBED SIDES, MATTE TOP)
RECOMMENDED NECK FINISH**

THIS MASTER DOCUMENT IS CONTROLLED ELECTRONICALLY. PRINTED OR DOWNLOADED COPIES ARE UNCONTROLLED. DOCUMENT USERS ARE RESPONSIBLE FOR ENSURING THEY HAVE THE LATEST REVISION PRIOR TO USE.

DRAWING TYPE: CUSTOMER DISTRIBUTION CODE: **D**

DWG SIZE: 8.5" x 11" DRAWING NUMBER: REVISION:

SCALE: 1:1 & NOTED SHEET: 3 OF 3 **CQA-10006** **01.AF**