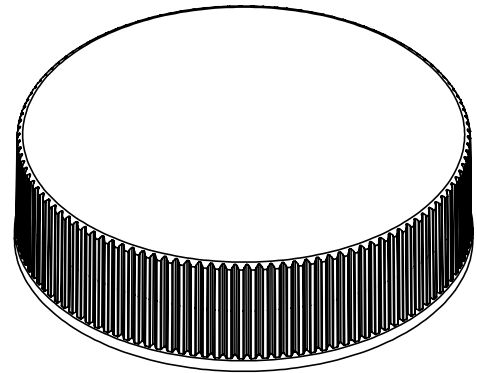


SECTION A-A



STATIC TORQUE RECOMMENDATION: 17-26 in-lbs
REQUIREMENT MAY VARY DEPENDING UPON CONTAINER MATERIAL,
NECK FINISH, AND CAPPING EQUIPMENT

DIMENSIONS ENCLOSED IN () INDICATE REFERENCE DIMENSIONS
AND NO TOLERANCE LIMITS ARE ESTABLISHED

DIMENSIONS PRECEDED BY AN "" INDICATE THE DIMENSION IS
PROCESS SENSITIVE. PROCESS SENSITIVE DIMENSIONS ARE
VERIFIED TO BE WITHIN THE TOLERANCE LIMITS DURING THE
PRODUCTION RUN. ALL REMAINING DIMENSIONS ARE VERIFIED AT
PRODUCTION VALIDATION.

PROPRIETARY AND CONFIDENTIAL

THIS DRAWING IS PROTECTED BY COPYRIGHT AND CONTAINS
INFORMATION PROPRIETARY TO MOLD-RITE PLASTICS AND ITS
SUBSIDIARIES. ANY REPRODUCTION, DISCLOSURE, OR USE OF
ITS CONTENTS OR ANY PART THEREOF IS EXPRESSLY
PROHIBITED EXCEPT AS MOLD-RITE PLASTICS AND ITS
SUBSIDIARIES OTHERWISE MAY AGREE IN WRITING.

THIS MASTER DOCUMENT IS CONTROLLED ELECTRONICALLY.
PRINTED OR DOWNLOADED COPIES ARE UNCONTROLLED.
DOCUMENT USERS ARE RESPONSIBLE FOR ENSURING THEY HAVE
THE LATEST REVISION PRIOR TO USE.

THE PART DIMENSIONS DEPICTED ARE THOSE WHICH HAVE GENERALLY BEEN FOUND TO BE FUNCTIONAL BASED ON INDUSTRY EXPERIENCE.
BECAUSE OF VARIABILITY IN CONTAINER FINISHES, EACH CLOSURE/FINISH SYSTEM SHOULD BE INDIVIDUALLY EVALUATED AND TESTED TO
ENSURE IT MEETS APPLICABLE PERFORMANCE CRITERIA.

MOLD-RITE PLASTICS AND ITS SUBSIDIARIES RESERVE THE RIGHT TO REVISE ANY OR ALL SPECIFICATIONS AND REQUIREMENTS.

REFERENCE

DIMENSION

TOLERANCE

UNITS

Ø E

1.394 [35.41]

±0.010 [0.25]

in [mm]

Ø T

1.487 [37.77]

±0.010 [0.25]

in [mm]

H

0.391 [9.93]

±0.010 [0.25]

in [mm]

OAH

0.440 [11.18]

±0.010 [0.25]

in [mm]

OD

1.595 [40.51]

±0.013 [0.33]

in [mm]

PART WEIGHT

2.80

± 0.30

g

THREAD DETAIL
INFORMATION:

6 THREADS
PER INCH

0.167" [4.24] PITCH

360°

FULL DEPTH
THREADS

DRAWN BY: DAS

5/9/2017

ENG APPR: BDG

1/20/2021

QA APPR: DMG

01/26/2021



DRAWING TITLE:

38-400 CT CLOSURE
RMX (RIBBED - MATTE)

MATERIAL:

POLYPROPYLENE

DRAWING TYPE: CUSTOMER

DISTRIBUTION CODE: D

REPLACES DRAWINGS:

C-5008

MODEL NUMBER:

PM 10498 38-400 CT

DWG SIZE:

8.5" x 11"

DRAWING NUMBER:

REVISION:

SCALE:

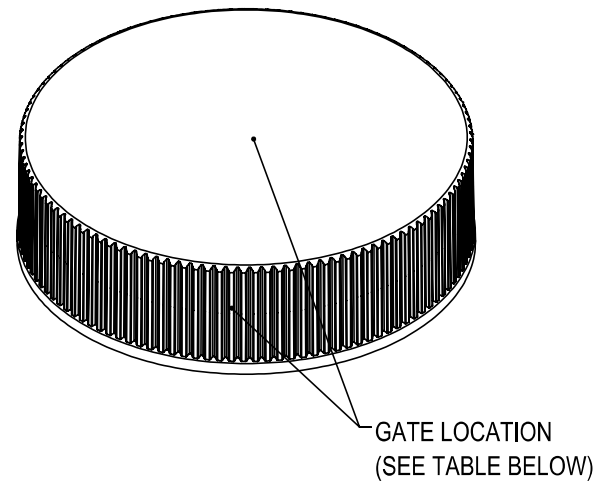
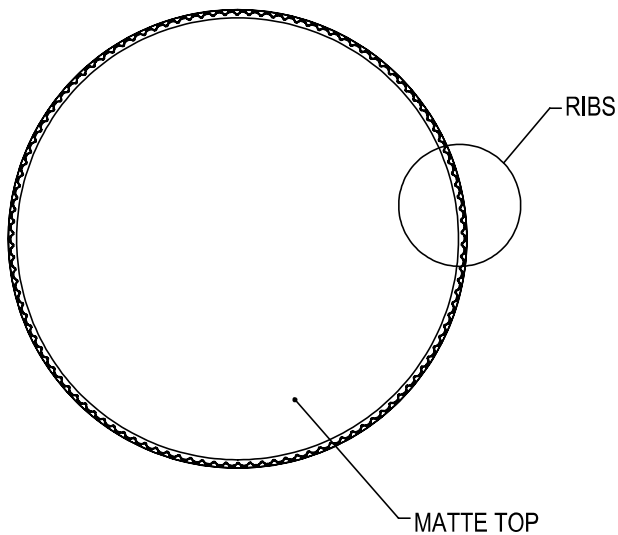
SHEET:

CQA-10499

00.AD

3:2 & NOTED


1 OF 3



DETAIL RIBS
SCALE 5 : 1
(128) EQUISPACED RIBS

MOLD NUMBER	GATE LOCATION
38011	SIDE
38015	SIDE
38030	TOP

DIMENSIONS ENCLOSED IN () INDICATE REFERENCE DIMENSIONS AND NO TOLERANCE LIMITS ARE ESTABLISHED						
PROPRIETARY AND CONFIDENTIAL THIS DRAWING IS PROTECTED BY COPYRIGHT AND CONTAINS INFORMATION PROPRIETARY TO MOLD-RITE PLASTICS AND ITS SUBSIDIARIES. ANY REPRODUCTION, DISCLOSURE, OR USE OF ITS CONTENTS OR ANY PART THEREOF IS EXPRESSLY PROHIBITED EXCEPT AS MOLD-RITE PLASTICS AND ITS SUBSIDIARIES OTHERWISE MAY AGREE IN WRITING						
THE PART DIMENSIONS DEPICTED ARE THOSE WHICH HAVE GENERALLY BEEN FOUND TO BE FUNCTIONAL BASED ON INDUSTRY EXPERIENCE BECAUSE OF VARIABILITY IN CONTAINER FINISHES, EACH CLOSURE/FINISH SYSTEM SHOULD BE INDIVIDUALLY EVALUATED AND TESTED TO ENSURE IT MEETS APPLICABLE PERFORMANCE CRITERIA. MOLD-RITE PLASTICS AND ITS SUBSIDIARIES RESERVE THE RIGHT TO REVISE ANY OR ALL SPECIFICATIONS AND REQUIREMENTS.	09/16/2024	00	AD	UPDATE MOLD TABLE	LES	LES
	08/03/2023	00	AC	UPDATE DRAWING FORMAT. REMOVE "I" FROM RNF PAGE 3.	LES	LES
	01/20/2021	00	AB	DRAWING UPDATED TO TO REFLECT HISTORICAL RUN DATA & PROCESS CAPABILITY. NO CHANGES TO THE STEEL OR PART HAVE OCCURED	BDG	CRS
	05/09/2017	00	AA	UPDATED DRAWING FORMAT, CORRECTED PW TOLERANCE	JDM	DAS
	DATE	REV	N/P	DESCRIPTION	ENG	DRW
	REVISION HISTORY					
REVISIONS:	REV: A PHYSICAL CHANGE TO THE PART IMPACTING FIT, FORM OR FUNCTION N/P: DRAWING OR SPECIFICATION CHANGE ONLY					

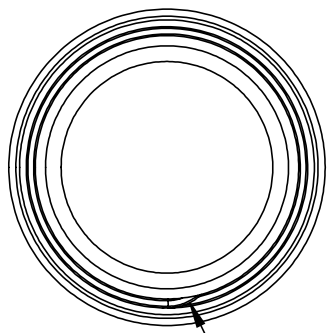


Packaging with purpose.

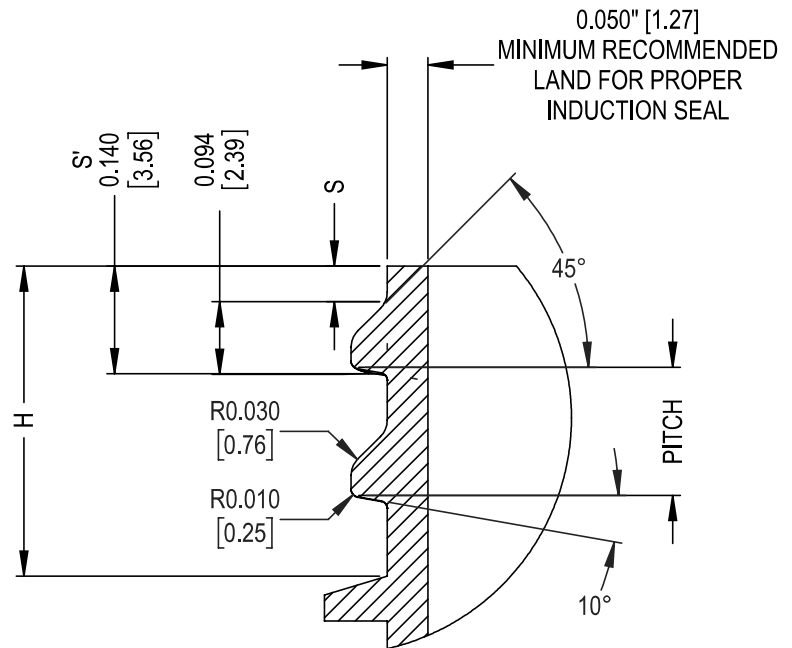
DRAWING TITLE:
**38-400 CT CLOSURE
RMX (RIBBED - MATTE)**

THIS MASTER DOCUMENT IS CONTROLLED ELECTRONICALLY. PRINTED OR DOWNLOADED COPIES ARE UNCONTROLLED. DOCUMENT USERS ARE RESPONSIBLE FOR ENSURING THEY HAVE THE LATEST REVISION PRIOR TO USE.

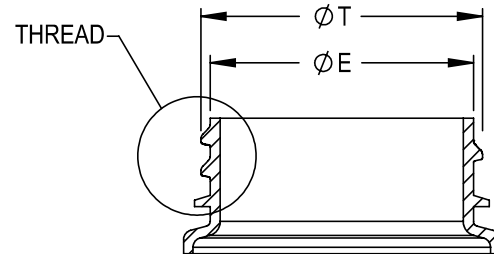
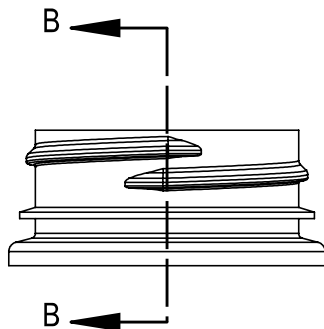
DRAWING TYPE: CUSTOMER		DISTRIBUTION CODE: D	
DWG SIZE: 8.5" x 11"	DRAWING NUMBER:	REVISION:	
SCALE: 3:2 & NOTED	SHEET: 2 OF 3	CQA-10499	00.AD



THREAD
START



DETAIL THREAD
SCALE 4 : 1



SECTION B-B

RECOMMENDED NECK FINISH IS DETERMINED FOR PROPER FUNCTIONAL PERFORMANCE WITH MOLD-RITE CLOSURE. USE OF MOLD-RITE CLOSURE WITH CONTAINER NOT MATCHING RECOMMENDED NECK FINISH SHOULD BE TESTED AND CONFIRMED FOR APPLICATION BY THE USER.

NOMINAL ORIENTATION OF CLOSURE (IF INDICATED) IS BASED ON NOMINAL DIMENSIONS OF BOTH CLOSURE AND RECOMMENDED NECK FINISH. FOR EXACT ORIENTATION, EACH CONTAINER SHOULD BE EVALUATED ON A CASE BY CASE BASIS.

DIMENSIONS ENCLOSED IN () INDICATE REFERENCE DIMENSIONS AND NO TOLERANCE LIMITS ARE ESTABLISHED

PROPRIETARY AND CONFIDENTIAL
THIS DRAWING IS PROTECTED BY COPYRIGHT AND CONTAINS INFORMATION PROPRIETARY TO MOLD-RITE PLASTICS AND ITS SUBSIDIARIES. ANY REPRODUCTION, DISCLOSURE, OR USE OF ITS CONTENTS OR ANY PART THEREOF IS EXPRESSLY PROHIBITED EXCEPT AS MOLD-RITE PLASTICS AND ITS SUBSIDIARIES OTHERWISE MAY AGREE IN WRITING

THE PART DIMENSIONS DEPICTED ARE THOSE WHICH HAVE GENERALLY BEEN FOUND TO BE FUNCTIONAL BASED ON INDUSTRY EXPERIENCE. BECAUSE OF VARIABILITY IN CONTAINER FINISHES, EACH CLOSURE/FINISH SYSTEM SHOULD BE INDIVIDUALLY EVALUATED AND TESTED TO ENSURE IT MEETS APPLICABLE PERFORMANCE CRITERIA.

MOLD-RITE PLASTICS AND ITS SUBSIDIARIES RESERVE THE RIGHT TO REVISE ANY OR ALL SPECIFICATIONS AND REQUIREMENTS.

NECK FINISH DIMENSIONS ASSUME ZERO THICKNESS (NO) LINER

REFERENCE	DIMENSION	TOLERANCE	UNITS
Ø E	1.370 [34.80]	±0.012 [0.30]	in [mm]
Ø T	1.464 [37.19]	±0.012 [0.30]	in [mm]
S	0.046 [1.17]	±0.015 [0.38]	in [mm]
H	0.403 [10.24]	MINIMUM	in [mm]
THREADS PER INCH	6		
PITCH	0.167 [4.24]		in [mm]



DRAWING TITLE:

38-400 CT CLOSURE
RECOMMENDED NECK FINISH

THIS MASTER DOCUMENT IS CONTROLLED ELECTRONICALLY. PRINTED OR DOWNLOADED COPIES ARE UNCONTROLLED. DOCUMENT USERS ARE RESPONSIBLE FOR ENSURING THEY HAVE THE LATEST REVISION PRIOR TO USE.

DRAWING TYPE: CUSTOMER DISTRIBUTION CODE: **D**

DWG SIZE: 8.5" x 11" DRAWING NUMBER: REVISION:

SCALE: 1:1 & NOTED SHEET: 3 OF 3 **CQA-10499** **00.AD**

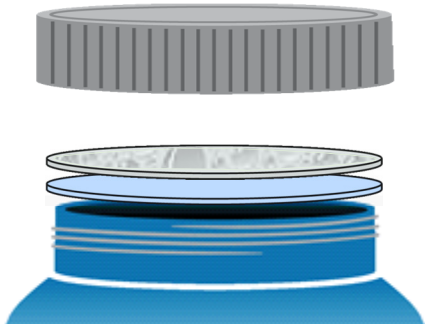
PRODUCT DATA SHEET

PressureSeal 20

- PressureSeal 20 is an inner seal with a construction of polystyrene foam coated with pressure sensitive adhesive.
- The US FDA does not consider liners applied with pressure sensitive adhesive to be an effective tamper-resistant feature.
- Recommended for use with dry products.
- Available with standard or custom print.

Typical Product Attributes

Construction

Polystyrene Foam Pressure Sensitive Adhesive		SI (µm)	US (Mils)
		508,0 50,8 – 76,2	20.0 2.0 – 3.0
Thickness Tolerance		± 10%	± 10%
Minimum Width		25,4 mm	1.0 in
Width Tolerance		± 1,6 mm	± 0.0625 in

Properties

Oxygen Transmission (O ₂ TR)	Not Tested
Water Vapor Transmission (WVTR)	Not Tested

Regulatory Compliance

FDA Compliance	21 CFR 177.1640 Polystyrene and rubber-modified polystyrene.
Drug Master File (DMF)	21 CFR 177.1210 Closures with sealing gaskets for food containers.
Other Compliances	21 CFR 175.125 Pressure-sensitive adhesives.
Safety Data Sheet (SDS) Statement	002518 USFDA Food Allergen Guidelines California Proposition 65 Labeling Requirements Limitations of Heavy Metals in Packaging per CONEG & EU 94/62/EC, Article 11 Safety Data Sheets (SDS) are not required for articles as defined in 29 CFR 1910.1200, the OSHA Hazard Communication Standard (HazCom). This product is an article as defined by HazCom and is not considered to be, or to contain, a hazardous chemical based on evaluations made by our company.

Please note that construction does not reflect adhesive or resin bonding layers, if present.

Revision Number: 4
Revised Date: 2018-06-08

DISCLAIMER: This information is believed to be accurate at the time of printing and is subject to change without notice. Providing this information does not convey any licenses under any patent rights or intellectual property rights of Tri-Seal or others. TRI-SEAL MAKES NO WARRANTY, EXPRESS OR IMPLIED, WITH RESPECT TO THIS INFORMATION AND DISCLAIMS ALL LIABILITY FROM RELIANCE ON IT. Tri-Seal's only warranties for this product are those written warranties as may be agreed to by Tri-Seal and its customers. TRI-SEAL SPECIFICALLY DISCLAIMS ALL OTHER WARRANTIES, EXPRESS OR IMPLIED, WITH RESPECT TO THE PRODUCT, INCLUDING, BUT NOT LIMITED TO, WARRANTIES OF MERCHANTABILITY AND FITNESS FOR PARTICULAR PURPOSE.