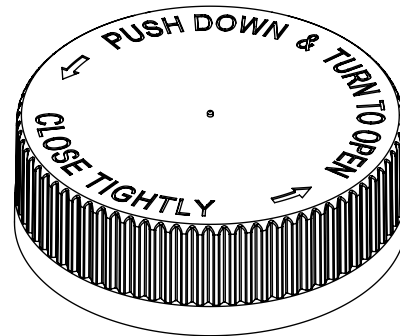


SECTION A-A
SCALE 1:1



STATIC TORQUE RECOMMENDATION: 17-27 in-lbs
REQUIREMENT MAY VARY DEPENDING UPON CONTAINER MATERIAL,
NECK FINISH, AND CAPPING EQUIPMENT

DIMENSIONS ENCLOSED IN () INDICATE REFERENCE DIMENSIONS
AND NO TOLERANCE LIMITS ARE ESTABLISHED

DIMENSIONS PRECEDED BY AN *** INDICATE THE DIMENSION IS
PROCESS SENSITIVE. PROCESS SENSITIVE DIMENSIONS ARE
VERIFIED TO BE WITHIN THE TOLERANCE LIMITS DURING THE
PRODUCTION RUN. ALL REMAINING DIMENSIONS ARE VERIFIED AT
PRODUCTION VALIDATION.

PROPRIETARY AND CONFIDENTIAL

THIS DRAWING IS PROTECTED BY COPYRIGHT AND CONTAINS
INFORMATION PROPRIETARY TO MOLD-RITE PLASTICS AND ITS
SUBSIDIARIES. ANY REPRODUCTION, DISCLOSURE, OR USE OF
ITS CONTENTS OR ANY PART THEREOF IS EXPRESSLY
PROHIBITED EXCEPT AS MOLD-RITE PLASTICS AND ITS
SUBSIDIARIES OTHERWISE MAY AGREE IN WRITING.

THIS MASTER DOCUMENT IS CONTROLLED ELECTRONICALLY.
PRINTED OR DOWNLOADED COPIES ARE UNCONTROLLED.
DOCUMENT USERS ARE RESPONSIBLE FOR ENSURING THEY HAVE
THE LATEST REVISION PRIOR TO USE.

THE PART DIMENSIONS DEPICTED ARE THOSE WHICH HAVE GENERALLY BEEN FOUND TO BE FUNCTIONAL BASED ON INDUSTRY EXPERIENCE.
BECAUSE OF VARIABILITY IN CONTAINER FINISHES, EACH CLOSURE/FINISH SYSTEM SHOULD BE INDIVIDUALLY EVALUATED AND TESTED TO
ENSURE IT MEETS APPLICABLE PERFORMANCE CRITERIA.

MOLD-RITE PLASTICS AND ITS SUBSIDIARIES RESERVE THE RIGHT TO REVISE ANY OR ALL SPECIFICATIONS AND REQUIREMENTS.

REFERENCE	DIMENSION	TOLERANCE	UNITS
E	1.658 [42.11]	±0.010 [0.25]	in [mm]
T'	1.752 [44.50]	±0.010 [0.25]	in [mm]
H [Seated]	0.548 [13.92]	REFERENCE	in [mm]
H [INNER]	0.385 [9.78]	±0.010 [0.25]	in [mm]
OD	2.044 [51.92]	±0.012 [0.30]	in [mm]
OAH	0.685 [17.40]	±0.020 [0.51]	in [mm]
PART WEIGHT	9.60	±1.5	g

THREAD DETAIL INFORMATION: 6 THREADS PER INCH 0.167" [4.24] PITCH 380° FULL DEPTH THREADS



DRAWING TITLE:
45-400 CRC Assm
PDT Debossed Logo

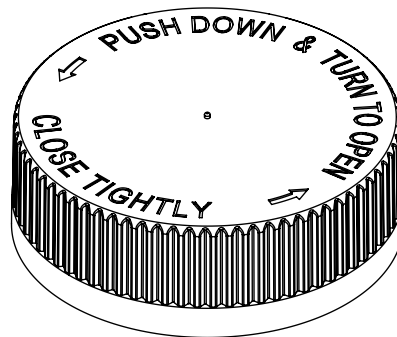
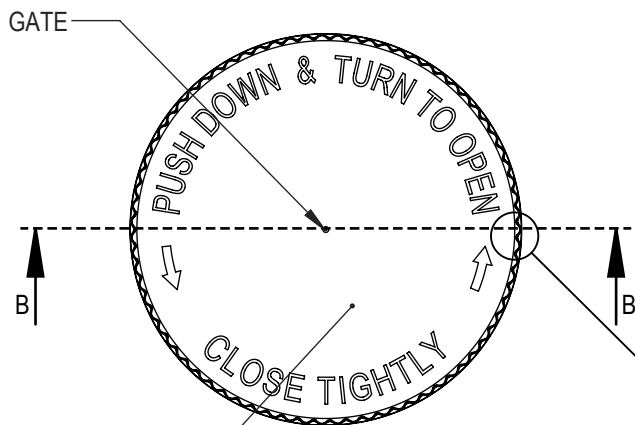
MATERIAL: POLYPROPYLENE

DRAWING TYPE: CUSTOMER DISTRIBUTION CODE: D

REPLACES DRAWINGS: (DRAWING REPLACED)

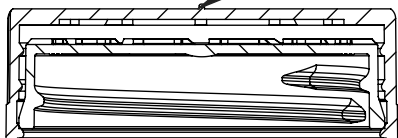
MODEL NUMBER: PM 10137 45-400 PDT CRC Assembly

DRAWN BY: BDG	9/4/2015	DWG SIZE: 8.5" x 11"	DRAWING NUMBER:	REVISION:
ENG APPR: BDG	11/21/2019	SCALE: 1:2 & NOTED	SHEET: 1 OF 3	CQA-11218 00.AD
QA APPR: REL	12/17/2019			



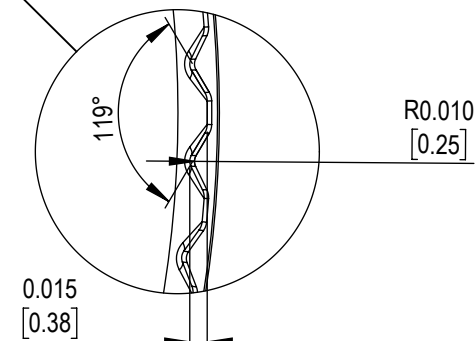
MATTE FINISH

OUTER POLYPROPYLENE



SECTION B-B

INNER COPOLYMER POLYPROPYLENE



DETAIL RIB
SCALE 6 : 1
(75) EQUISPACED RIBS

DIMENSIONS ENCLOSED IN () INDICATE REFERENCE DIMENSIONS AND NO TOLERANCE LIMITS ARE ESTABLISHED

PROPRIETARY AND CONFIDENTIAL
THIS DRAWING IS PROTECTED BY COPYRIGHT AND CONTAINS INFORMATION PROPRIETARY TO MOLD-RITE PLASTICS AND ITS SUBSIDIARIES. ANY REPRODUCTION, DISCLOSURE, OR USE OF ITS CONTENTS OR ANY PART THEREOF IS EXPRESSLY PROHIBITED EXCEPT AS MOLD-RITE PLASTICS AND ITS SUBSIDIARIES OTHERWISE MAY AGREE IN WRITING

THE PART DIMENSIONS DEPICTED ARE THOSE WHICH HAVE GENERALLY BEEN FOUND TO BE FUNCTIONAL BASED ON INDUSTRY EXPERIENCE BECAUSE OF VARIABILITY IN CONTAINER FINISHES. EACH CLOSURE/FINISH SYSTEM SHOULD BE INDIVIDUALLY EVALUATED AND TESTED TO ENSURE IT MEETS APPLICABLE PERFORMANCE CRITERIA.

MOLD-RITE PLASTICS AND ITS SUBSIDIARIES RESERVE THE RIGHT TO REVISE ANY OR ALL SPECIFICATIONS AND REQUIREMENTS.

REVISIONS

DATE	REV	N/P	DESCRIPTION	ENG	DRW
09/04/2015	01	AA	DRAWING RELEASED	BDG	BDG
11/21/2019	01	AB	CORRECTED METRIC CONVERSION	BDG	BDG
06/13/2023	01	AC	UPDATED DRAWING TEMPLATE & LOGO	BDG	BDG
07/01/2024	01	AD	CORRECTED METRIC CONVERSION FOR TOLERANCES	BDG	BDG



DRAWING TITLE:
45-400 CRC Assm
PDT Debossed Logo

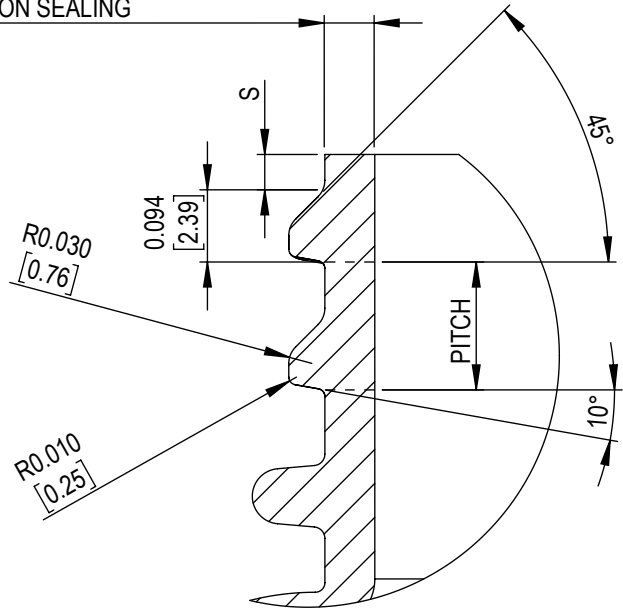
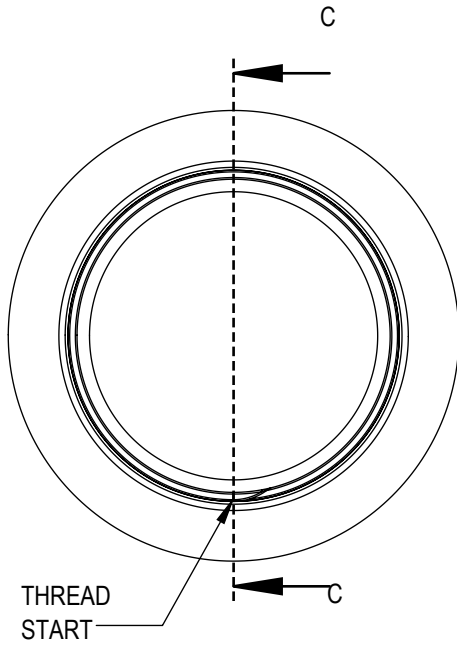
THIS MASTER DOCUMENT IS CONTROLLED ELECTRONICALLY. PRINTED OR DOWNLOADED COPIES ARE UNCONTROLLED. DOCUMENT USERS ARE RESPONSIBLE FOR ENSURING THEY HAVE THE LATEST REVISION PRIOR TO USE.

DRAWING TYPE: CUSTOMER		DISTRIBUTION CODE: D	
DWG SIZE: 8.5" x 11"	DRAWING NUMBER: CQA-11218	REVISION: 00.AD	
SCALE: 1:2 & NOTED	SHEET: 2 OF 3		

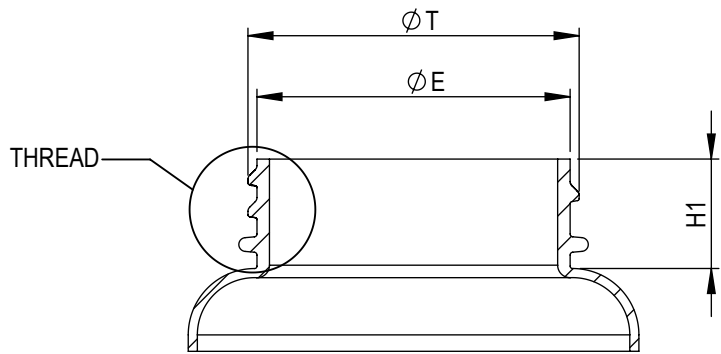
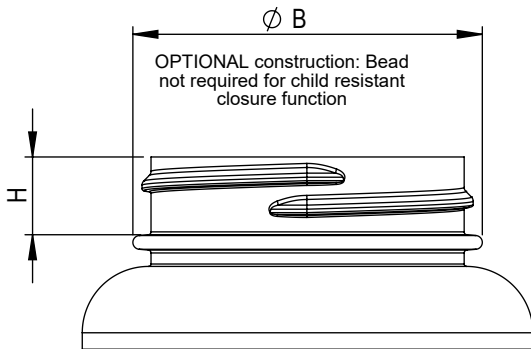
REVISION HISTORY

REVISIONS: REV: A PHYSICAL CHANGE TO THE PART IMPACTING FIT, FORM OR FUNCTION
N/P: DRAWING OR SPECIFICATION CHANGE ONLY

0.050 [1.27] MINIMUM FLAT
RECOMMENDED FOR
PROPER INDUCTION SEALING



DETAIL THREAD
SCALE 4 : 1



SECTION C-C

CHILD RESISTANT PROTOCOL TESTING NOTE: MOLD-RITE PLASTICS, LLC CERTIFIES THAT ITS CHILD RESISTANT CLOSURES PASSED TESTS OUTLINED IN 16 CFR SECTION 1700.20 TESTING PROCEDURE AND MEET WITH REQUIREMENTS DEFINED BY 16 CFR SECTION 1700.15 POISON PREVENTION PACKAGING STANDARDS, GENERALLY. IT IS RECOMMENDED THAT CUSTOMERS CONDUCT TESTING TO CONFIRM CLOSURES PERFORM AS EXPECTED WITH THEIR SPECIFIC CONTAINERS AND CONDITIONS OF USE.

RECOMMENDED NECK FINISH IS DETERMINED FOR PROPER FUNCTIONAL PERFORMANCE WITH MOLD-RITE CLOSURE. USE OF MOLD-RITE CLOSURE WITH CONTAINER NOT MATCHING RECOMMENDED NECK FINISH SHOULD BE TESTED AND CONFIRMED FOR APPLICATION BY THE USER.

NOMINAL ORIENTATION OF CLOSURE (IF INDICATED) IS BASED ON NOMINAL DIMENSIONS OF BOTH CLOSURE AND RECOMMENDED NECK FINISH. FOR EXACT ORIENTATION, EACH CONTAINER SHOULD BE EVALUATED ON A CASE BY CASE BASIS.

DIMENSIONS ENCLOSED IN () INDICATE REFERENCE DIMENSIONS AND NO TOLERANCE LIMITS ARE ESTABLISHED

PROPRIETARY AND CONFIDENTIAL
THIS DRAWING IS PROTECTED BY COPYRIGHT AND CONTAINS INFORMATION PROPRIETARY TO MOLD-RITE PLASTICS AND ITS SUBSIDIARIES. ANY REPRODUCTION, DISCLOSURE, OR USE OF ITS CONTENTS OR ANY PART THEREOF IS EXPRESSLY PROHIBITED EXCEPT AS MOLD-RITE PLASTICS AND ITS SUBSIDIARIES OTHERWISE MAY AGREE IN WRITING

THE PART DIMENSIONS DEPICTED ARE THOSE WHICH HAVE GENERALLY BEEN FOUND TO BE FUNCTIONAL BASED ON INDUSTRY EXPERIENCE. BECAUSE OF VARIABILITY IN CONTAINER FINISHES, EACH CLOSURE/FINISH SYSTEM SHOULD BE INDIVIDUALLY EVALUATED AND TESTED TO ENSURE IT MEETS APPLICABLE PERFORMANCE CRITERIA.

MOLD-RITE PLASTICS AND ITS SUBSIDIARIES RESERVE THE RIGHT TO REVISE ANY OR ALL SPECIFICATIONS AND REQUIREMENTS.

REFERENCE	DIMENSION	TOLERANCE	UNITS
E	1.631 [41.43]	± 0.017 [0.43]	in [mm]
T	1.725 [43.82]	± 0.017 [0.43]	in [mm]
S	0.046 [1.17]	± 0.015 [0.38]	in [mm]
H	0.405 [10.29]	MINIMUM	in [mm]
H1	0.570 [14.48]	MINIMUM	in [mm]
B	1.820 [46.23]	MAXIMUM	in [mm]
TPI	6		
PITCH	0.167 [4.24]		in [mm]



DRAWING TITLE:
45-400 CRC Assm
PDT Debossed Logo
RECOMMENDED NECK FINISH

THIS MASTER DOCUMENT IS CONTROLLED ELECTRONICALLY. PRINTED OR DOWNLOADED COPIES ARE UNCONTROLLED. DOCUMENT USERS ARE RESPONSIBLE FOR ENSURING THEY HAVE THE LATEST REVISION PRIOR TO USE.

DRAWING TYPE: CUSTOMER		DISTRIBUTION CODE: D	
DWG SIZE: 8.5" x 11"	DRAWING NUMBER:	REVISION:	
SCALE: 1:2 & NOTED	SHEET: 3 OF 3	CQA-11218	00.AD